

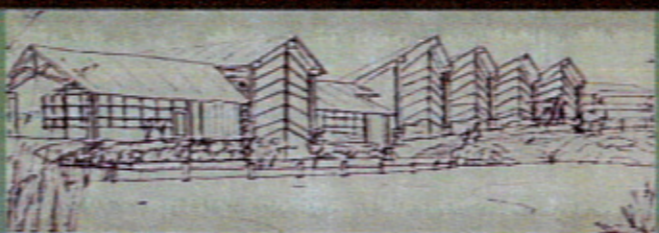


RECEIVED

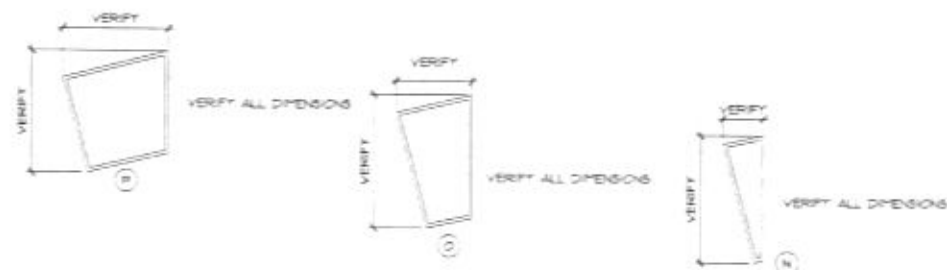
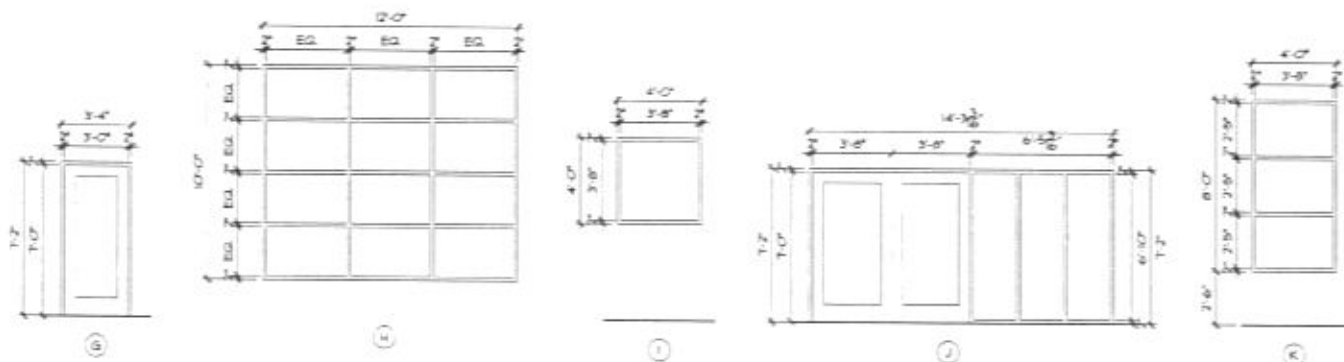
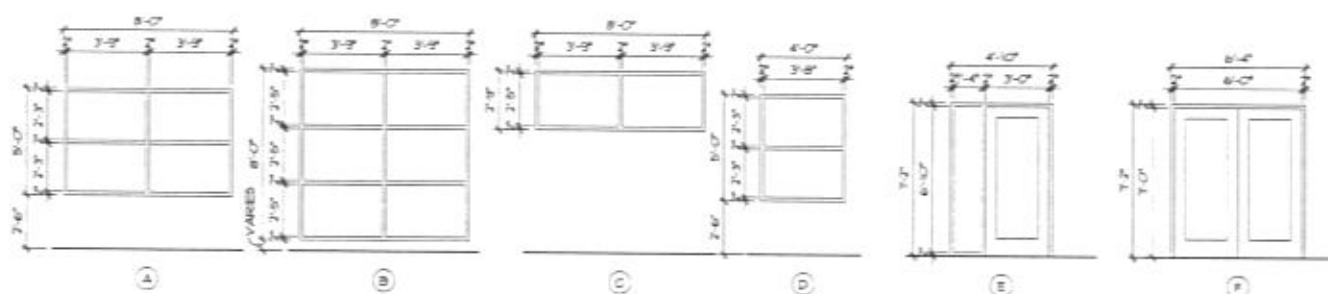
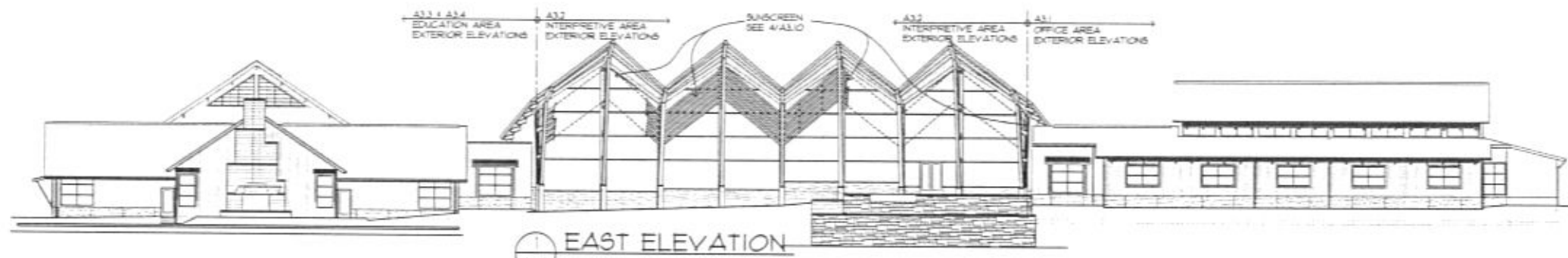
DEC 23 2009

Rapid City Growth Management Department

SD GF&P OUTDOOR CAMPUS



THE OUTDOOR CAMPUS
South Dakota Game, Fish & Parks



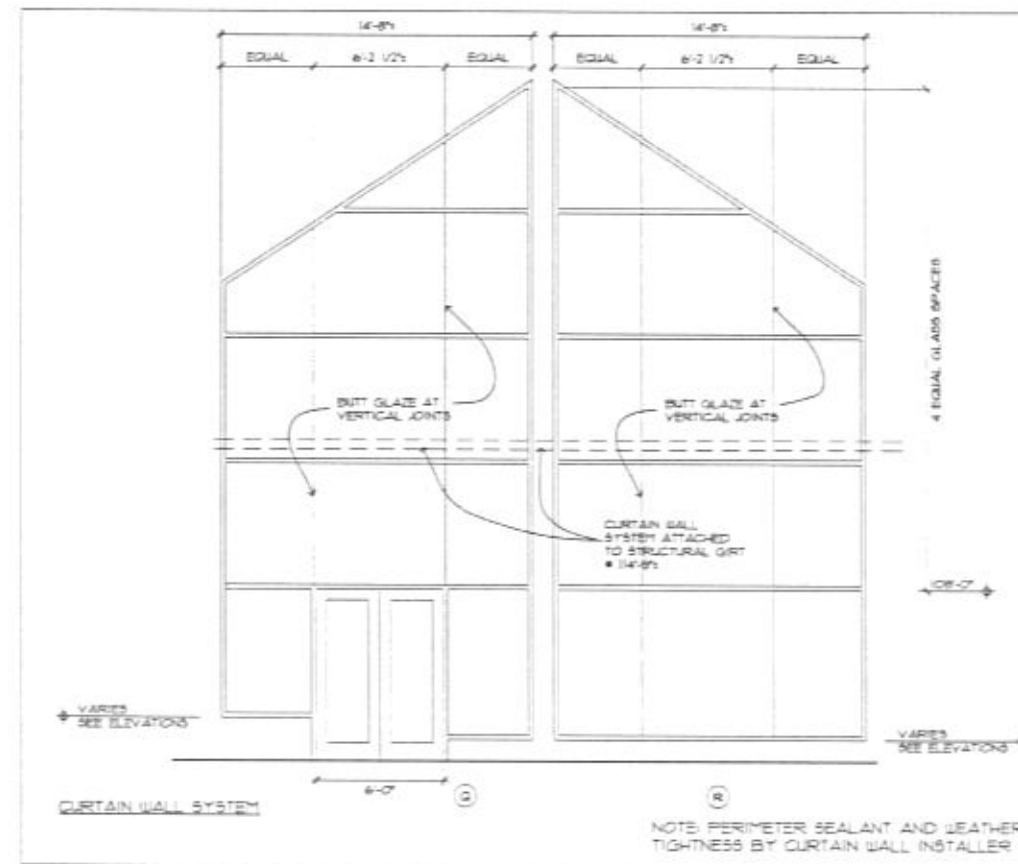
ALUMINUM STOREFRONTS

NOTE PERIMETER SEALANT AND LEATHER TIGHTNESS BY ALUMINUM STOREFRONT INSTALLER

3 DOOR/WINDOW FRAMES
A3.0 1/16\"/>

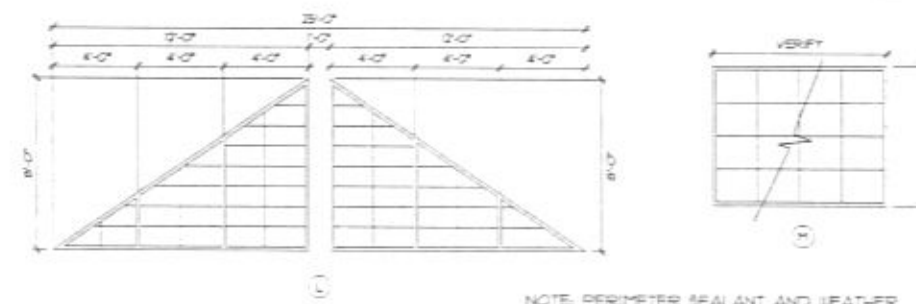
GENERAL NOTE

1/2\"/>



CURTAIN WALL SYSTEM

NOTE PERIMETER SEALANT AND LEATHER TIGHTNESS BY CURTAIN WALL INSTALLER



TRANSLUCENT INSULATED PANELS

NOTE PERIMETER SEALANT AND LEATHER TIGHTNESS BY TRANSLUCENT INSULATED PANEL INSTALLER



CIVIL ENGINEER:
Ferfer
Engineering
Company, Inc.
341 Poplar - Rapid City, SD 57701 - Phone: 605.343.3028
CONTACT: JAMES LUSHBOUGH

STRUCTURAL ENGINEER:
Albertson Engineering Inc.
3202 West Main
Suite C
Rapid City, South Dakota 57702
719.977.1111
805.343.3028
CONTACT: DAVID LEPPER

MECHANICAL/ELECTRICAL ENGINEER:
WPE
WEST PLUMBING
ENGINEERING, INC.
1781 ROAD 1004 - RAPID CITY, SD 57702
PHONE: 605.348.1355 • FAX: 605.348.1888
www.westplumbing.com
CONTACT: MICHAEL HENRICH
DAREN BECKLOFF

LANDSCAPE ARCHITECT:
Wyss Associates, Inc.
728 5th Street
Rapid City, South Dakota 57701
PHONE: 605.348.2266 • 605.348.1333
www.wyssassociates.com
CONTACT: MATT FRIEL

DATE: NOVEMBER 12, 2009
PROJECT MANAGER: JAMES LUSHBOUGH
PROJECT NUMBER: 2005-017



OUTDOOR CAMPUS
South Dakota for Game, Fish & Parks
RAPID CITY, SOUTH DAKOTA
EXTERIOR ELEVATIONS

A3.0

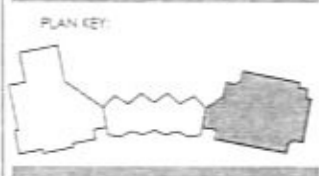
ARCHITECT
ARCHITECTURE
 INTERNATIONAL
 101 S. 17th Street, Suite 100
 Rapid City, SD 57702
 CONTACT: JAMES LUSHBOUGH

CIVIL ENGINEER
FEC Ferber
 Engineering
 Company, Inc.
 3202 West Main
 Suite C
 Rapid City, South Dakota 57702
 605.343.9608
 CONTACT: DAVE MUCK

STRUCTURAL ENGINEER
AEI Albertson
 Engineering Inc.
 3202 West Main
 Suite C
 Rapid City, South Dakota 57702
 605.343.9608
 CONTACT: DAVID JEFFERT

MECHANICAL/ELECTRICAL ENGINEER
WPE WEST
 PLYMOUTH ENGINEERS INC.
 1750 ARMO ROAD • RAPID CITY, SD 57702
 PHONE: 605.348.7455 • FAX: 605.348.9465
 WWW.WPEENGINEERS.COM
 CONTACT: MICHAEL HENRICH
 DAREN BECKLOFF

LANDSCAPE ARCHITECT:
Wys Associates, Inc.
 728 34th Street
 Rapid City, South Dakota 57701
 Phone: 605.348.0244 • Fax: 605.348.0204
 www.wysassociates.com
 CONTACT: MATT FROELL



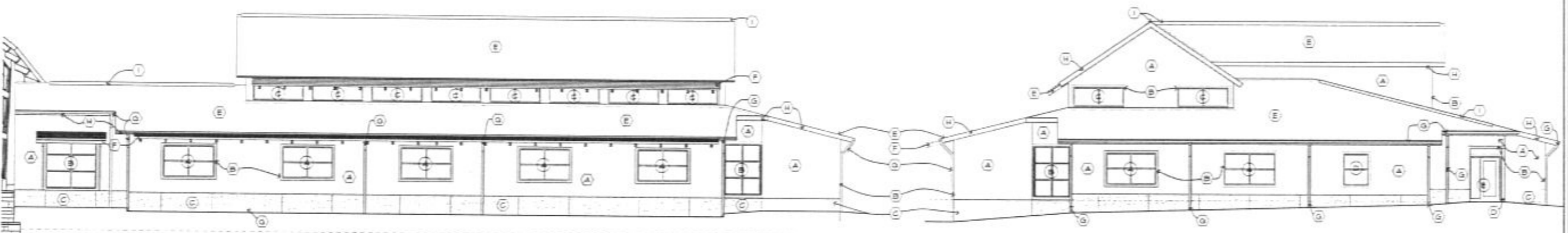
DATE: NOVEMBER 12, 2009
 PROJECT MANAGER: JAMES LUSHBOUGH
 PROJECT NUMBER: 2005-017



THE OUTDOOR CAMPUS
 South Dakota Game, Fish & Parks
 RAPID CITY, SOUTH DAKOTA

OFFICE AREA
 EXTERIOR ELEVATIONS

A3.1

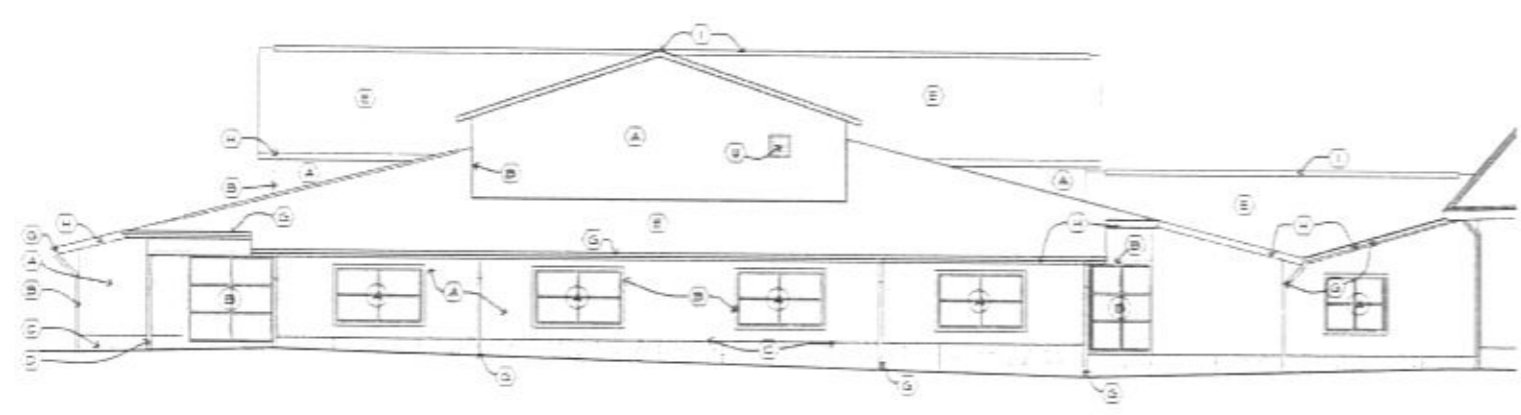


1 EAST ELEVATION
 A3.1 1/8"=1'-0"

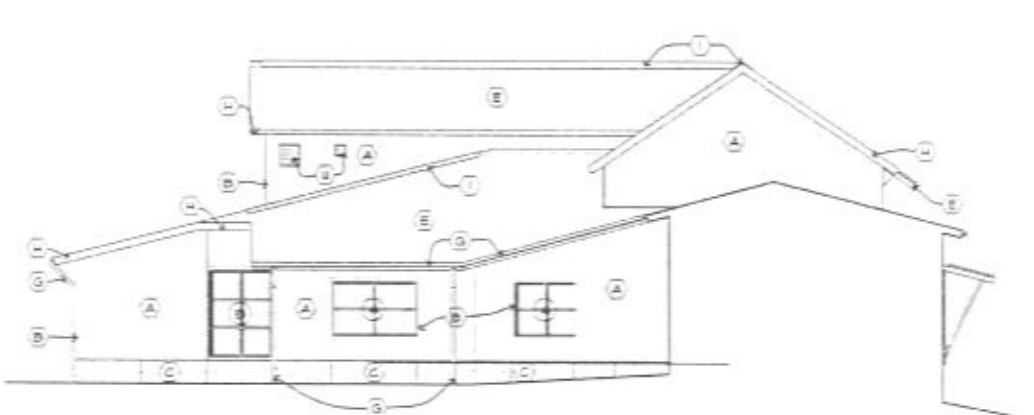
2 NORTH ELEVATION
 A3.1 1/8"=1'-0"

KEY NOTES

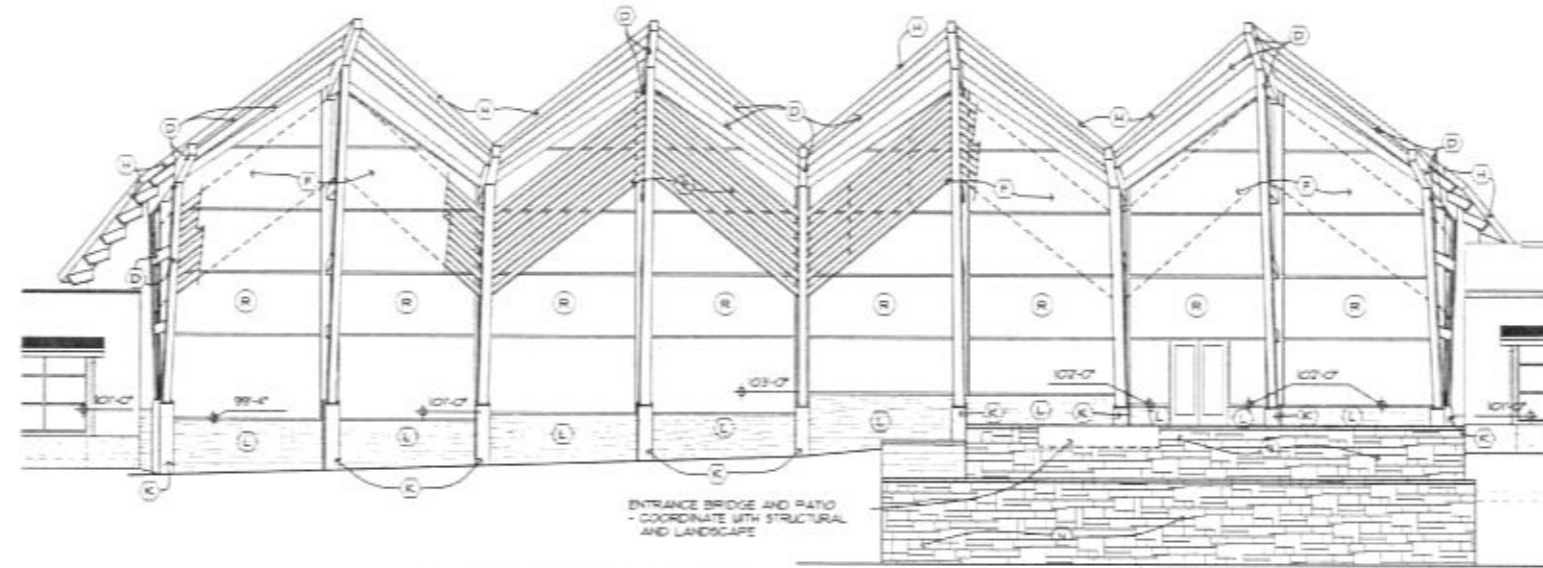
(A) WOOD FIBER VERTICAL SIDING, CANDEL, ULTRA PLANK, COLOR TBD	(K) EXPOSED CONCRETE, RUBBED FINISH
(B) 4" WOOD FIBER TRIM AROUND WINDOWS, DOORS, AND CORNERS, PAINTED FINISH	(L) STONE TYPE 3, DRY STACK, ABLEKER PATTERN
(C) EPS - DRYVIT TERRAZZO, COLOR TBD, GROOVE JOINTS AS SHOWN	(M) STONE TYPE 1 - GRANITE, ROCK FACE 24"x48"x12", RUNNING BOND, COLOR ST
(D) GULF-LAM TIMBER - SEE STRUCTURAL	(N) STONE TYPE 2, 2" MORTAR JOINTS, SEE ELEVATIONS FOR PATTERN, COORDINATE PATTERN SIZE WITH ARCHITECTS
(E) METAL ROOF - COLOR PINE LEATHERED SALVADORE	(O) CURTAIN WALL SYSTEM
(F) REDWOOD SHUNDADE, SEE A3.3 & A3.12, SEE STRUCTURAL FOR ATTACHMENT	(P) 2" GRANITE-PAVING SOLID GRANITE MANTLE, STONE TYPE 1 - ROCK FACE
(G) METAL GUTTER AND DOWNSPOUT	(Q) INSULATED TRANSLUCENT PANEL SKYLIGHT BY KALSBALL
(H) METAL FASCIA AND COPING	(R) SINGLE PLY MEMBRANE ROOF, LIGHT GREY
(I) RIDGE VENT	(S) ROOF GUTTER, SEE DETAIL A/436
(J) METAL DOWNSPOUT SCUPPER	(T) 4" GRANITE CAPSTONE, ROCK FACE, STONE TYPE 1
	(U) MECHANICAL VENT - COORDINATE SIZE AND LOCATION WITH MECHANICAL



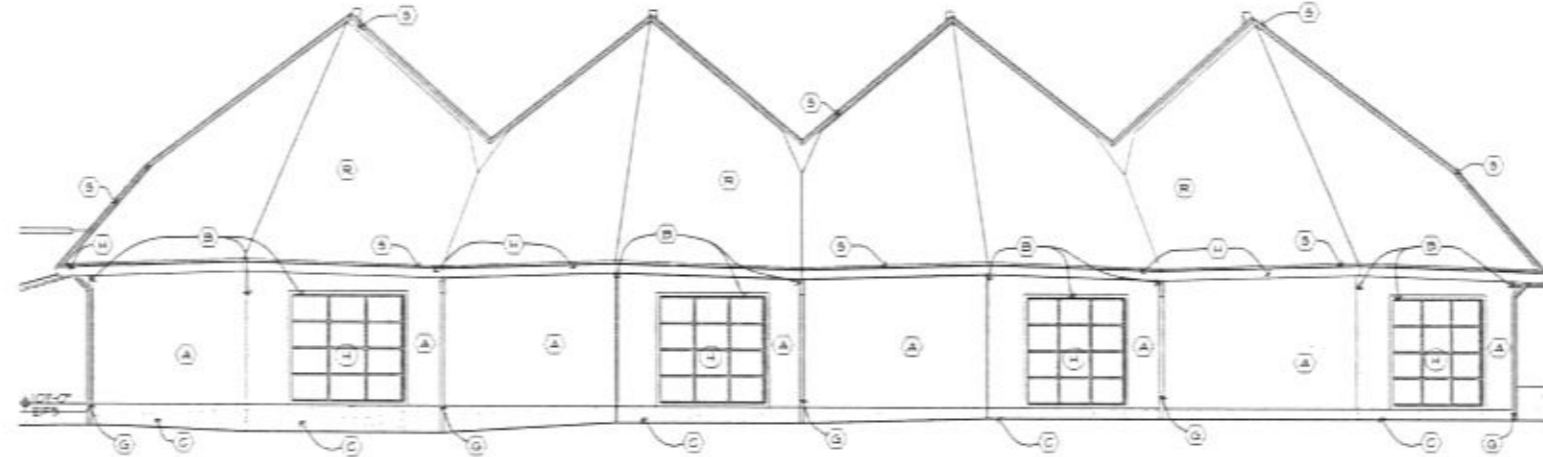
3 WEST ELEVATION
 A3.1 1/8"=1'-0"



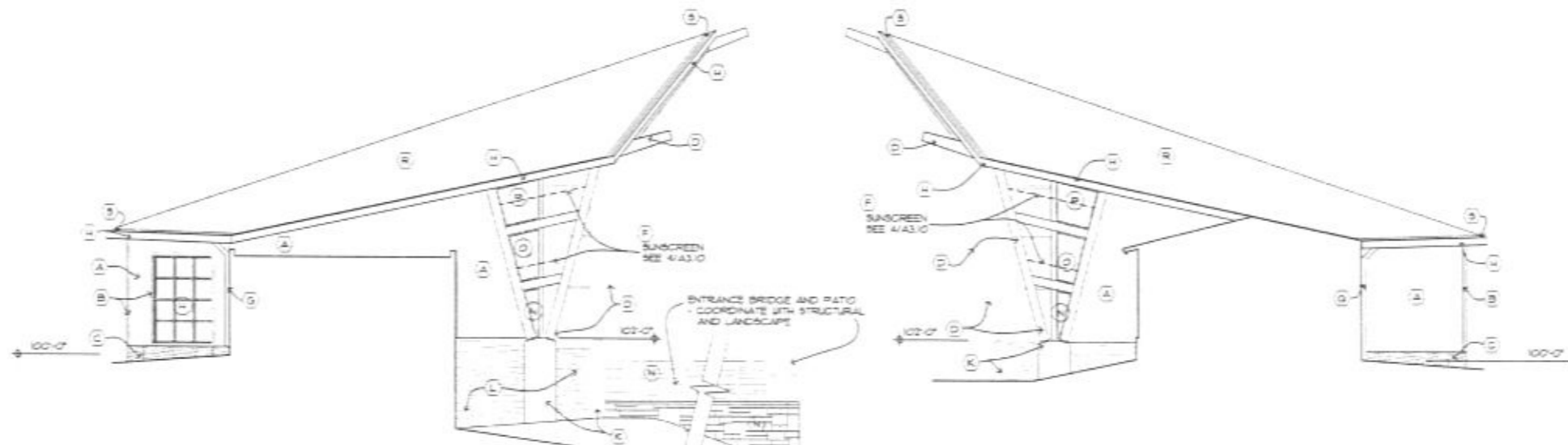
4 SOUTH ELEVATION
 A3.1 1/8"=1'-0"



1 EAST ELEVATION
A32 1/8"=1'-0"



2 WEST ELEVATION
A32 1/8"=1'-0"



3 SOUTH ELEVATION
A32 1/8"=1'-0"

4 NORTH ELEVATION
A32 1/8"=1'-0"

- KEY NOTES
- (A) WOOD FIBER VERTICAL SIDING, CANDEL, ULTRA PLANK, COLOR TBD
 - (B) 4" WOOD FIBER TRIM AROUND WINDOWS, DOORS, AND CORNERS, PAINTED FINISH
 - (C) EPS - DRYVIT TERRAZZO, COLOR TBD, GROOVE JOINTS AS SHOWN
 - (D) GULF-LAM TRIMER - SEE STRUCTURAL
 - (E) METAL ROOF - COLOR PRE-WEATHERED GALVALUME
 - (F) REDWOOD SUNSHADE, SEE A3.9 & A3.10, SEE STRUCTURAL FOR ATTACHMENT
 - (G) METAL GUTTER AND DOWNSPOUT
 - (H) METAL FASCIA AND CORNING
 - (I) RIDGE VENT
 - (J) METAL DOWNSPOUT SCUPPER
 - (K) EXPOSED CONCRETE, RUBBED FINISH
 - (L) STONE TYPE 3, DRY STACK, ASHLER PATTERN
 - (M) STONE TYPE 1 - GRANITE, ROCK FACE 35x24x14", RAINING BOND, COLOR ST
 - (N) STONE TYPE 2, 7" MORTAR JOINTS, SEE ELEVATIONS FOR PATTERN, COORDINATE PATTERN SIZE WITH ARCHITECTS
 - (O) CURTAIN WALL SYSTEM
 - (P) 2'-0"x17'-4 1/2"x1'-0" SOLID GRANITE MANTLE, STONE TYPE 1 - ROCK FACE
 - (Q) INSULATED TRANSLUCENT PANEL SKYLIGHT BY KALBALL
 - (R) SINGLE PLY MEMBRANE ROOF, LIGHT GREY
 - (S) ROOF GUTTER, SEE DETAIL A/AS.6
 - (T) 4" GRANITE CAPSTONE, ROCK FACE, STONE TYPE 1
 - (U) MECHANICAL VENT - COORDINATE SIZE AND LOCATION WITH MECHANICAL

ARCHITECT
ARC HITECTURE INTERNATIONAL
403 W. 2ND ST. SUITE 101
RAPID CITY, SOUTH DAKOTA 57702
CONTACT: JAMES LUSHBOUGH

CIVIL ENGINEER
Ferber Engineering Company, Inc.
201 Engineering - Rapid City, South Dakota
201 S. Main - Rapid City, SD 57702
CONTACT: DAVID WICK

STRUCTURAL ENGINEER
Albertson Engineering Inc.
3302 West Main
Suite C
Rapid City, South Dakota 57702
805.343.9608
CONTACT: DAVID EFFERT

MECHANICAL/ELECTRICAL ENGINEER
WPE WEST PLAINS ENGINEERING, INC.
170 RANG ROAD • RAPID CITY, SD 57702
PHONE: 805.345.7955 • FAX: 805.345.9440
WWW.WESTPLAINSENGINEERING.COM
CONTACT: MICHAEL HENRICH
DAREN BECKLOFF

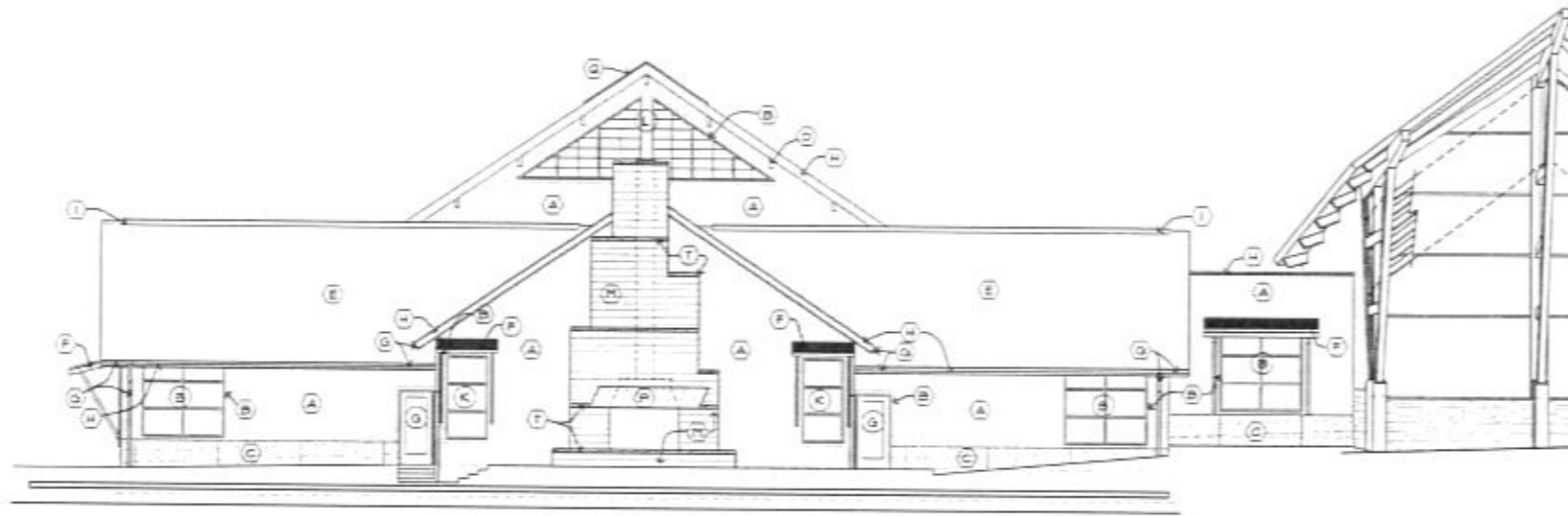
LANDSCAPE ARCHITECT
Wyss Associates, Inc.
708 5th Street
Rapid City, South Dakota 57701
PHONE: 805.348.2248 or 805.348.1000
CONTACT: MATT FROEL

PLAN KEY:

DATE: NOVEMBER 12, 2009
PROJECT MANAGER: JAMES LUSHBOUGH
PROJECT NUMBER: 2005-017

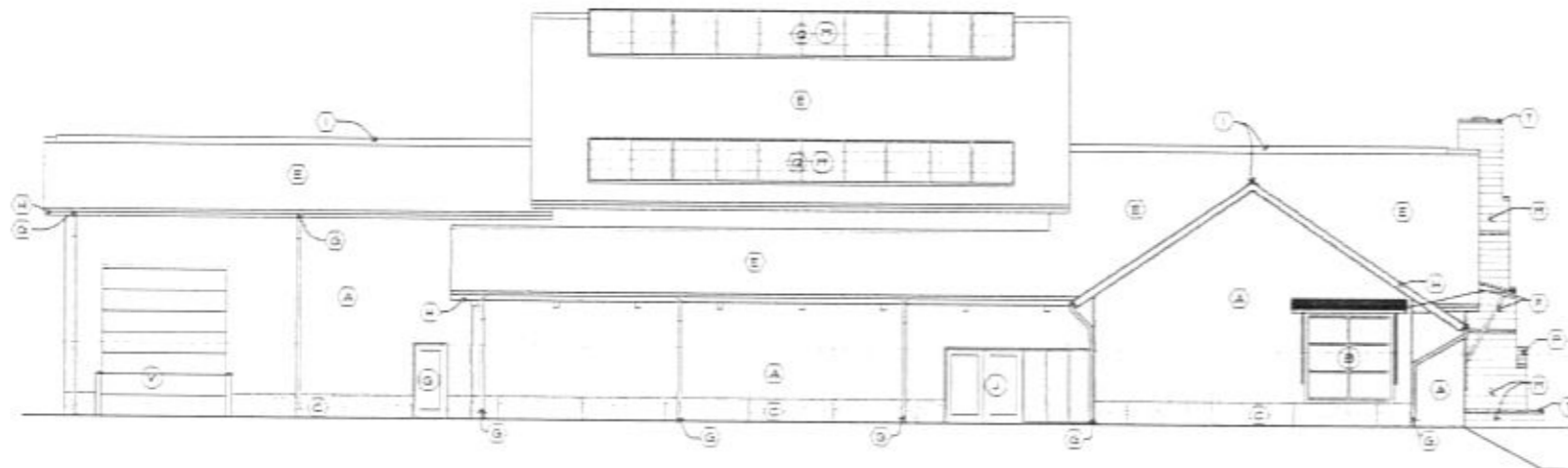
THE OUTDOOR CAMPUS
South Dakota Game, Fish & Parks
RAPID CITY, SOUTH DAKOTA
INTERPRETIVE AREA
EXTERIOR ELEVATIONS

A3.2

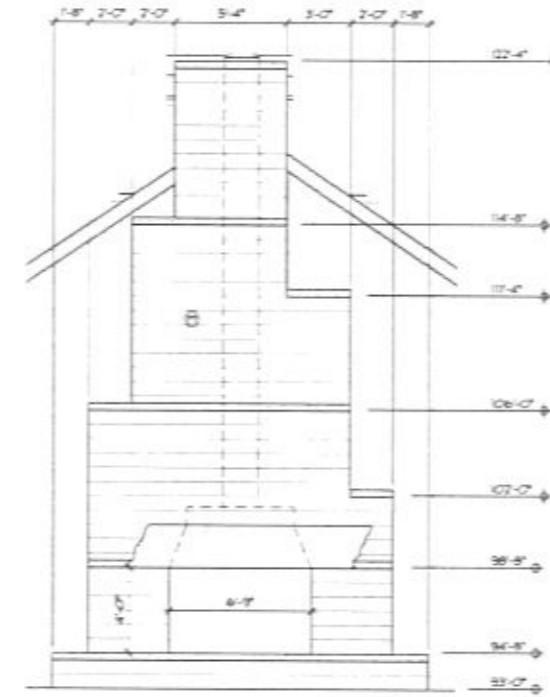


1 EAST ELEVATION
A3.3 1/8"=1'-0"

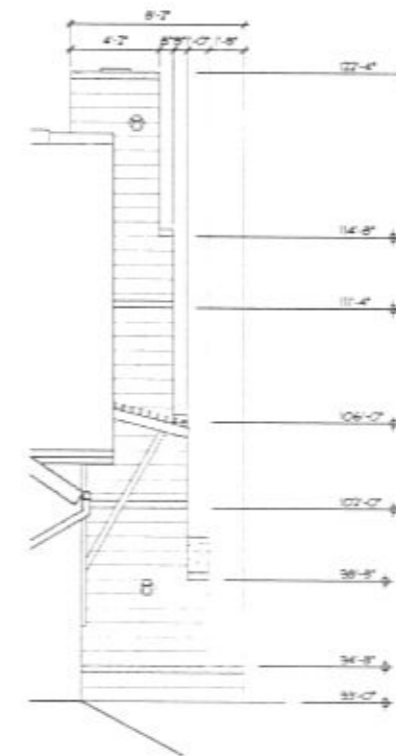
KEY NOTES	
(A) WOOD FIBER VERTICAL SIDING, CANEVEL ULTRA PLANK, COLOR TBD	(K) EXPOSED CONCRETE, RUBBED FINISH
(B) 4" WOOD FIBER TRIM AROUND WINDOWS, DOORS, AND CORNERS, PAINTED FINISH	(L) STONE TYPE 3, DRY STACK, ADLER PATTERN
(C) EPS - DRYVIT TERRAZZO, COLOR TBD, GROOVE JOINTS AS SHOWN	(M) STONE TYPE 1 - GRANITE, ROCK FACE 2"x4"x14", RUNNING BOND, COLOR BT
(D) GULAM TYBER - SEE STRUCTURAL	(N) STONE TYPE 2, 2" MORTAR JOINTS, SEE ELEVATIONS FOR PATTERN, COORDINATE PATTERN SIZE WITH ARCHITECTS
(E) METAL ROOF - COLOR PRE WEATHERED GALVALUME	(O) CURTAIN WALL SYSTEM
(F) REDWOOD SUNSHADE, SEE A3.3 + A3.2, SEE STRUCTURAL FOR ATTACHMENT	(P) 2'-0"x17'-6"x1'-0" SOLID GRANITE MANTLE, STONE TYPE 1 - ROCK FACE
(G) METAL GUTTER AND DOWNSPOUT	(Q) INSULATED TRANSLUCENT PANEL SKYLIGHT BY KALIBALL
(H) METAL FASCIA AND COPING	(R) SINGLE PLY MEMBRANE ROOF, LIGHT GREY
(I) RIDGE VENT	(S) ROOF GUTTER, SEE DETAIL 4/A3A
(J) METAL DOWNSPOUT SCUPPER	(T) 4" GRANITE CAPSTONE, ROCK FACE, STONE TYPE 1
	(U) MECHANICAL VENT - COORDINATE SIZE AND LOCATION WITH MECHANICAL



2 SOUTH ELEVATION
A3.3 1/8"=1'-0"



3 OUTDOOR FIREPLACE
A3.3 1/4"=1'-0"



ARC HITECTURE
INTERNATIONAL

200 COMPASS BLVD.
Rapid City, South Dakota 57702-1000
CONTACT: JAMES LUSHBOUGH

CIVIL ENGINEER:
FEC Ferber Engineering Company, Inc.
2001 West Main
Suite C
Rapid City, South Dakota 57702
805.343.9808
CONTACT: DAVE MUCK

STRUCTURAL ENGINEER:
3202 West Main
Suite C
Rapid City, South Dakota 57702
805.343.9808
Albertson Engineering Inc.
CONTACT: DAVID LEPPER

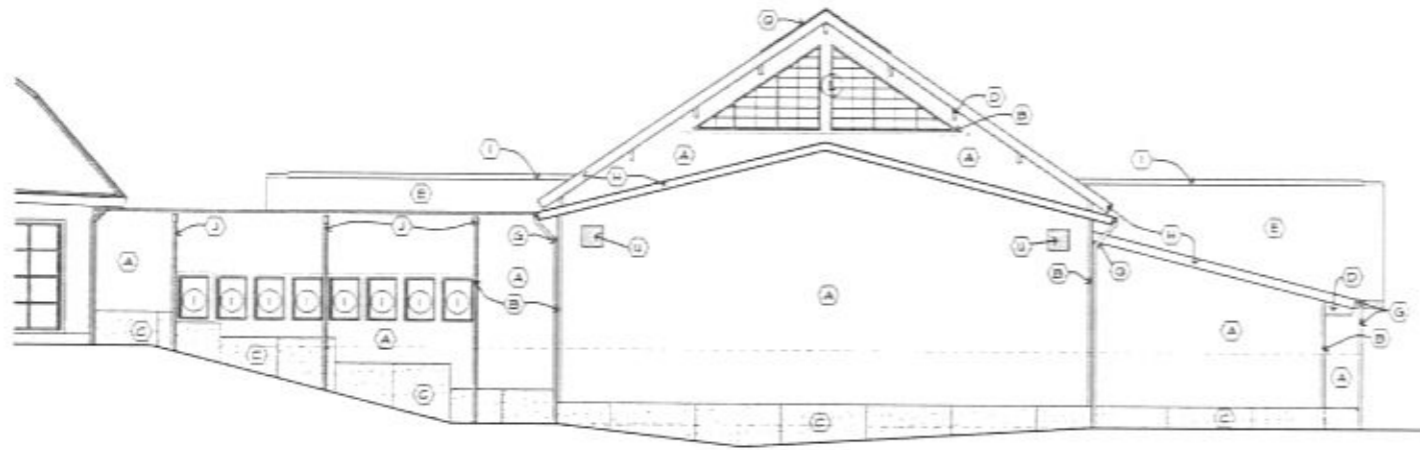
MECHANICAL/ELECTRICAL ENGINEER:
WPE WEST PLAINS ENGINEERING, INC.
1700 HAWK ROAD • RAPID CITY, SD 57715
PHONE: 605.343.7975 • FAX: 605.343.8443
www.westplainsengineering.com
CONTACT: MICHAEL HENRICH
DAREN BECKLOFF

LANDSCAPE ARCHITECT:
Wyss Associates, Inc.
728 East Dwyer
Rapid City, South Dakota 57701
PHONE: 605.344.2288 • FAX: 605.348.1224
www.wyssassociates.com
CONTACT: MATT FRIEL

DATE: NOVEMBER 12, 2009
PROJECT MANAGER: JAMES LUSHBOUGH
PROJECT NUMBER: 2005-017

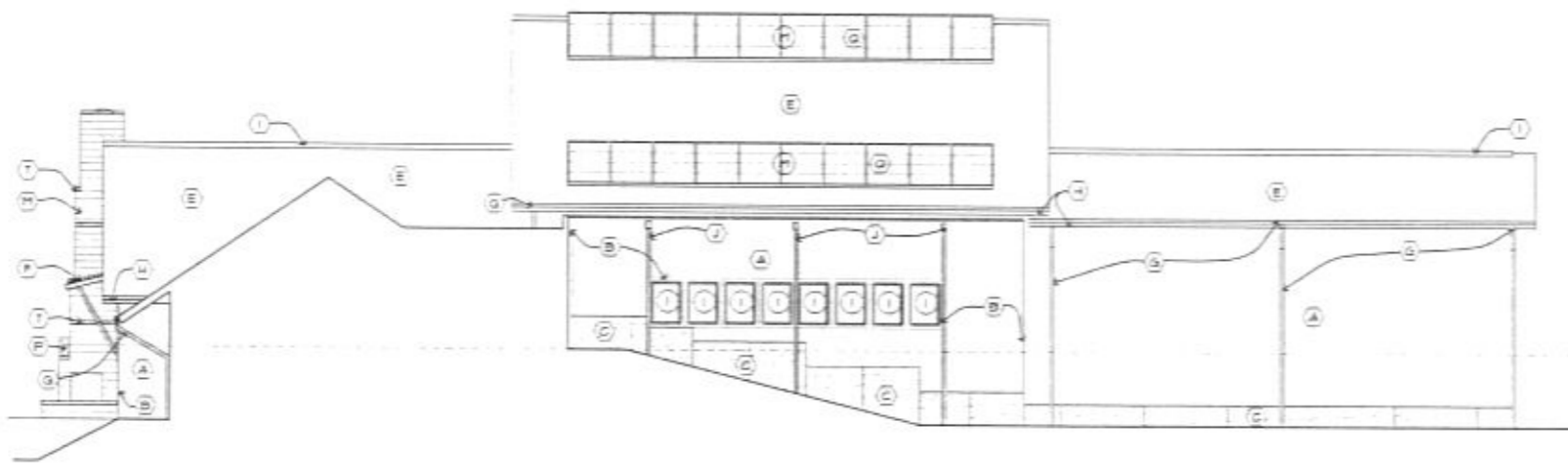
OUTDOOR CAMPUS
South Dakota Game, Fish & Parks
RAPID CITY, SOUTH DAKOTA
EDUCATION AREA
EXTERIOR ELEVATIONS

A3.3



1 WEST ELEVATION
A3.4 1/8"=1'-0"

- KEY NOTES:
- (A) 600D FIBER VERTICAL SIDING, CANEVEL, ULTRA PLANK, COLOR TBD
 - (B) 4" WOOD FIBER TRIM AROUND WINDOWS, DOORS, AND CORNERS, PAINTED FINISH
 - (C) EPS - DRYVIT TERRAZO, COLOR TBD, GROOVE JOINTS AS SHOWN
 - (D) GILHAM TIMBER - SEE STRUCTURAL
 - (E) METAL ROOF - COLOR PRE-WEATHERED GALVALUME
 - (F) REDWOOD SUNSHADE, SEE A3.3 & A3.2, SEE STRUCTURAL FOR ATTACHMENT
 - (G) METAL GUTTER AND DOWNSPOUT
 - (H) METAL FASCIA AND COPING
 - (I) RIDGE VENT
 - (J) METAL DOWNSPOUT SCUPPER
 - (K) EXPOSED CONCRETE, RUBBED FINISH
 - (L) STONE TYPE 3, DRY STACK, ASHLER PATTERN
 - (M) STONE TYPE 1 - GRANITE, ROCK FACE 8"X24"X4", RUNNING BOND, COLOR ST
 - (N) STONE TYPE 2, 7" MORTAR JOINTS, SEE ELEVATIONS FOR PATTERN, COORDINATE PATTERN SIZE WITH ARCHITECTS
 - (O) CURTAIN WALL SYSTEM
 - (P) 7-0"X17-0"X1-0" SOLID GRANITE MANTLE, STONE TYPE 1 - ROCK FACE
 - (Q) INSULATED TRANSLUCENT PANEL SKYLIGHT BY KAIBALL
 - (R) SINGLE PLY MEMBRANE ROOF, LIGHT GREY
 - (S) ROOF GUTTER, SEE DETAIL 4/A3.6
 - (T) 4" GRANITE CAPSTONE, ROCK FACE, STONE TYPE 1
 - (U) MECHANICAL VENT - COORDINATE SIZE AND LOCATION WITH MECHANICAL



2 NORTH ELEVATION
A3.4 1/8"=1'-0"

ARCHITECT:
ARC HITECTURE INTERNATIONAL
101 SOUTH DAKOTA AVENUE, SUITE 200, RAPID CITY, SOUTH DAKOTA 57702
CONTACT: JAMES LUSHBOUGH

CIVIL ENGINEER:
FEC Ferber Engineering Company, Inc.
2000 WEST MAIN, SUITE C, RAPID CITY, SOUTH DAKOTA 57702
PHONE: 605.343.9506
CONTACT: DAVID MUCK

STRUCTURAL ENGINEER:
3202 WEST MAIN, SUITE C, RAPID CITY, SOUTH DAKOTA 57702
PHONE: 605.343.9506
Albertson Engineering Inc.
CONTACT: DAVID JEFFERT

MECHANICAL/ELECTRICAL ENGINEER:
WPE WEST PLAINS ENGINEERING, INC.
1730 RAND ROAD, RAPID CITY, SD 57702
PHONE: 605.343.7433 • FAX: 605.343.9445
WWW.WESTPLAINSENGINEERING.COM
CONTACT: MICHAEL HENRICH, DAREN BECKLOFF

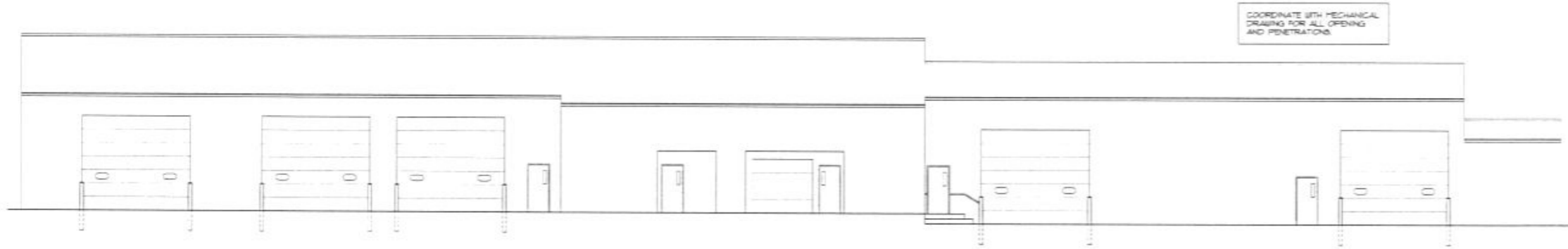
LANDSCAPE ARCHITECT:
Wyss Associates, Inc.
728 Sixth Street, Rapid City, South Dakota 57701
PHONE: 605.343.2288 • FAX: 605.343.4204
CONTACT: MATT FROEL

PLAN KEY:

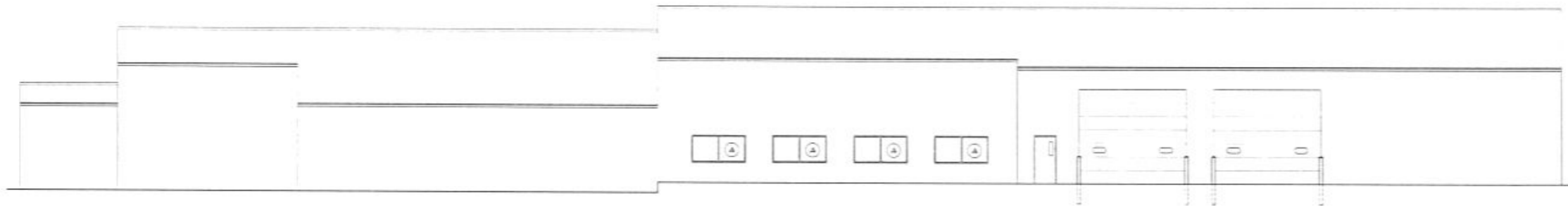
DATE: NOVEMBER 12, 2009
PROJECT MANAGER: JAMES LUSHBOUGH
PROJECT NUMBER: 2005-017

OUTDOOR CAMPUS
South Dakota Game, Fish & Parks
RAPID CITY, SOUTH DAKOTA
EDUCATION AREA
EXTERIOR ELEVATIONS

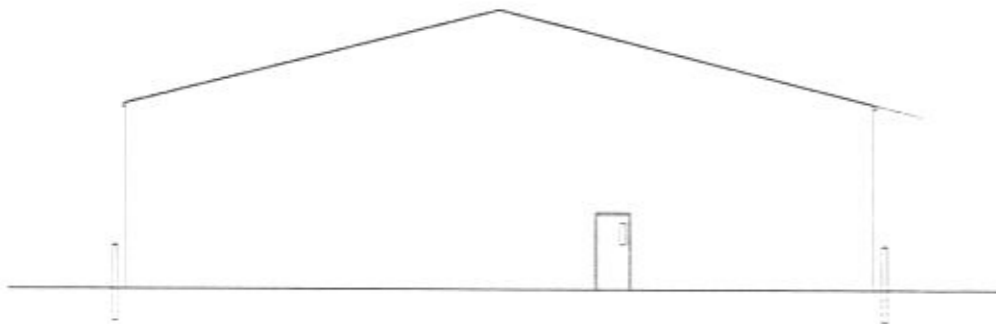
A3.4



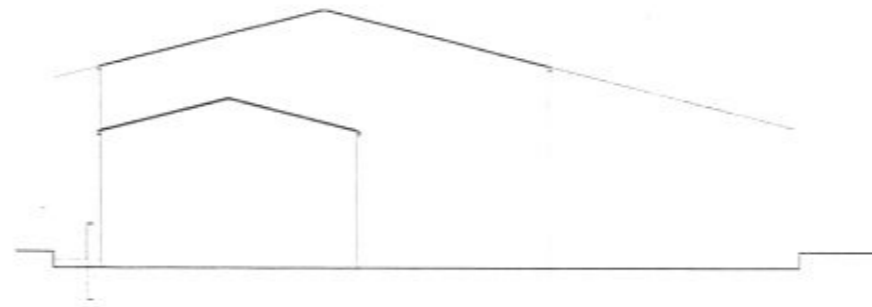
1 EAST ELEVATION
B3.1 1/8"=1'-0"



2 WEST ELEVATION
B3.1 1/8"=1'-0"



3 SOUTH ELEVATION
B3.1 1/8"=1'-0"



4 NORTH ELEVATION
B3.1 1/8"=1'-0"

ARCHITECT
ARCHITECTURE
 INTERNATIONAL
 2015-2016 ARCHITECTS
 CONTACT: JAMES LUSHBOUGH

CIVIL ENGINEER
FEC Ferber
 Engineering
 Company, Inc.
 On Engineering - Water Resources - Transportation - Land Surveying
 101 East Broadway St. Rapid City, SD 57701 - Phone: 605.343.9101
 CONTACT: DAVE MUCK

STRUCTURAL ENGINEER
 3202 West Main
 Suite C
 Rapid City, South Dakota 57702
 605.343.9608
Albertson Engineering Inc.
 CONTACT: DAVID LEPPER

MECHANICAL/ELECTRICAL ENGINEER
WPE WEST
 PLANS
 ENGINEERING, INC.
 1750 RAND ROAD • RAPID CITY, SD 57702
 PHONE: 605.348.7255 • FAX: 605.348.8444
 WWW.WESTPLANSENGINEERING.COM
 ARCHITECT: JAMES LUSHBOUGH
 CONTACT: MICHAEL HENRICH
 DAREN BECKLOFF

LANDSCAPE ARCHITECT
 Wyss Associates, Inc.
 728 Sixth Street
 Rapid City, South Dakota 57701
 PHONE: 605.348.2268 TX: 605.348.1878
 LANDSCAPE ARCHITECTURE • LAND SURVEYING
 CONTACT: MATT FROEL

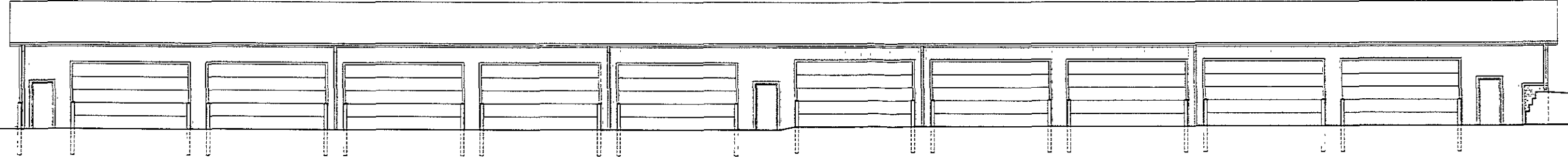
DATE: NOVEMBER 12, 2009
 PROJECT MANAGER: JAMES LUSHBOUGH
 PROJECT NUMBER: 2005-017



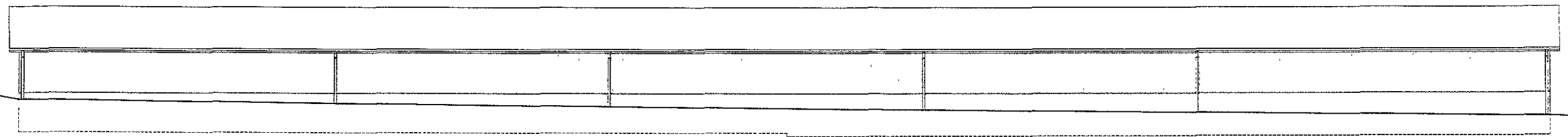


SHOP EXTERIOR ELEVATIONS

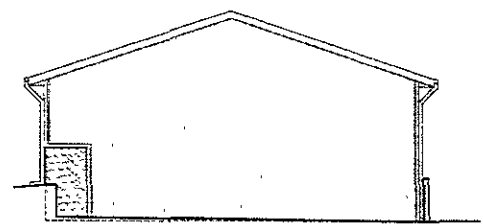
B3.1



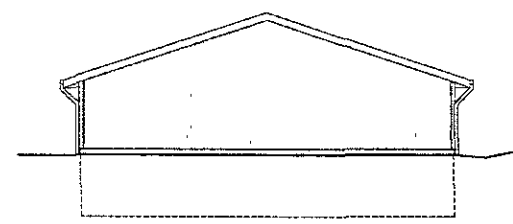
1 SOUTH ELEVATION
B5.2 1/8"=1'-0"



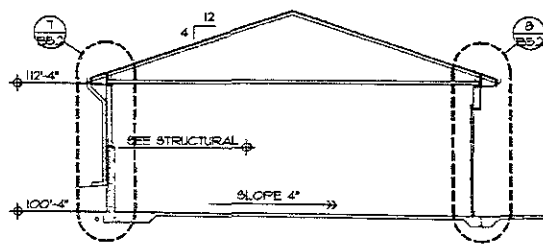
2 NORTH ELEVATION
B5.2 1/8"=1'-0"



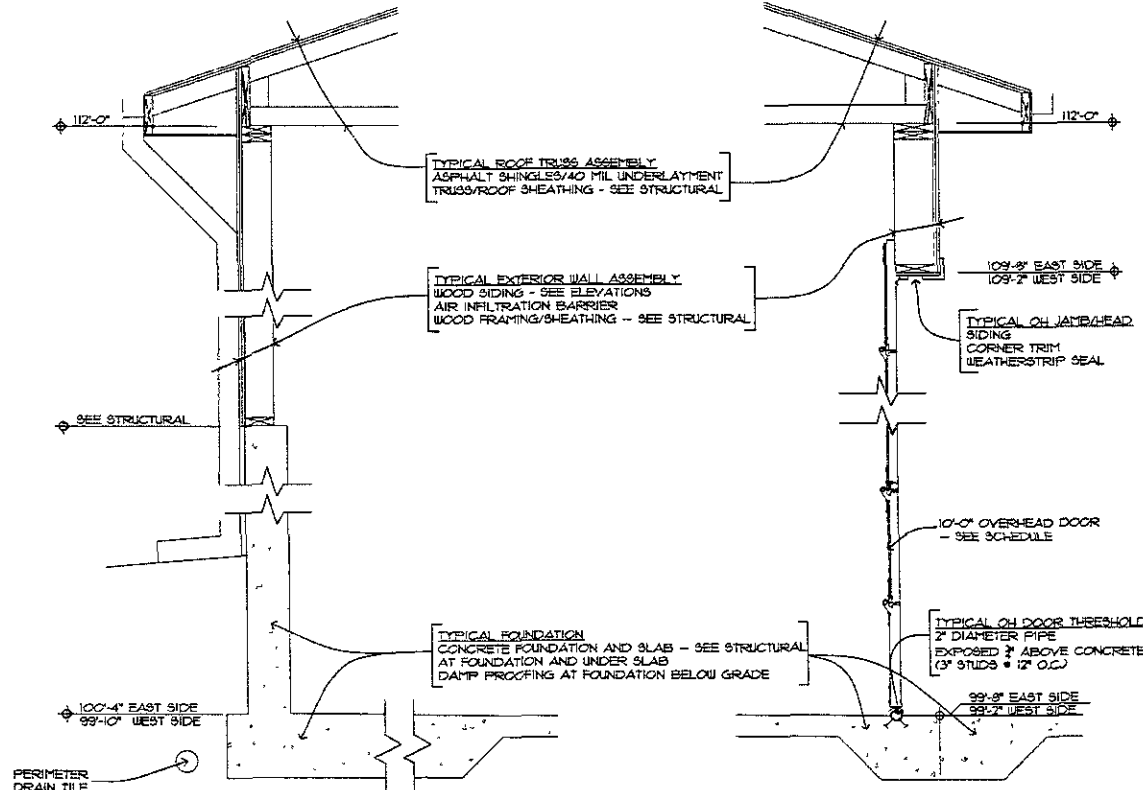
3 WEST ELEVATION
B5.2 1/8"=1'-0"



4 EAST ELEVATION
B5.2 1/8"=1'-0"

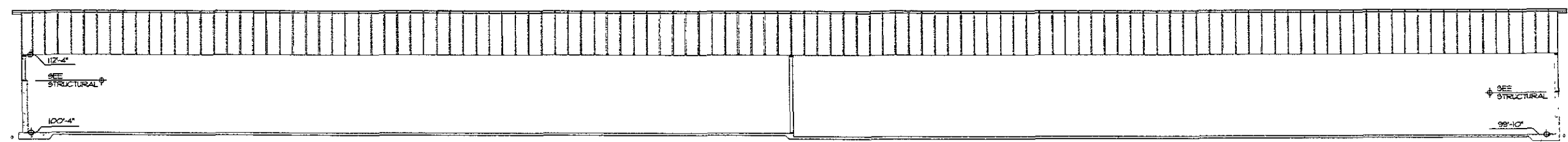


5 BUILDING SECTION
B5.2 1/8"=1'-0"



7 WALL SECTION
B5.2 3/4"=1'-0"

8 WALL SECTION
B5.2 3/4"=1'-0"



6 BUILDING SECTION
B5.2 1/8"=1'-0"

ARC HITECTURE INTERNATIONAL
1825 CLARK STREET SUITE 311
RAPID CITY, SOUTH DAKOTA 57702 TEL: 605-343-2506 WWW.ARC-INTL.COM
CONTACT: JAMES LUSHBOUGH

CIVIL ENGINEER:
Ferfer Engineering Company, Inc.
Civil Engineering • Water Resources • Transportation • Land Surveying
707 East Meador Street, Rapid City, SD 57703 • Phone: (605) 343-1311
CONTACT: DAVE MUCK

STRUCTURAL ENGINEER:
3202 West Main Suite C
Rapid City, South Dakota 57702
605-343-5606
Albertson Engineering Inc.
CONTACT: DAVID LEPPERT

MECHANICAL/ELECTRICAL ENGINEER:
WPE WEST PLAINS ENGINEERING, INC.
1750 RAND ROAD • RAPID CITY, SD 57110
PHONE: (605) 348-7455 • FAX: (605) 348-9445
WWW.WESTPLAINSENGINEERING.COM
WFO OFFICE: 800-368-2266 • 605-348-5506
LANDSCAPE ARCHITECTURE • LAND PLANNING
GOLF COURSE ARCHITECTURE

LANDSCAPE ARCHITECT:
Wyss Associates, Inc.
728 Sixth Street
Rapid City, South Dakota 57701
Phone: (605) 348-2266 • 605-348-5506
LANDSCAPE ARCHITECTURE • LAND PLANNING
GOLF COURSE ARCHITECTURE
CONTACT: MATT FRIDELL

DATE: NOVEMBER 12, 2009
PROJECT MANAGER: JAMES LUSHBOUGH
PROJECT NUMBER: 2005-017

THE OUTDOOR CAMPUS
South Dakota Game, Fish & Parks
RAPID CITY, SOUTH DAKOTA
COLD STORAGE EXTERIOR ELEVATIONS AND SECTIONS

B5.2