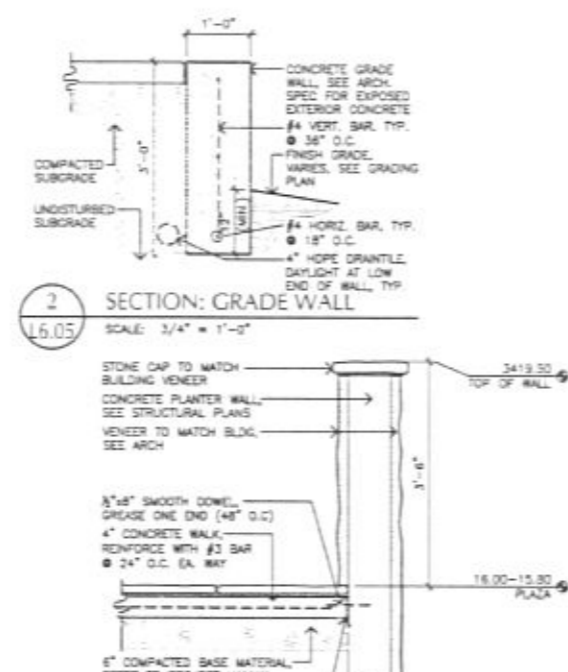
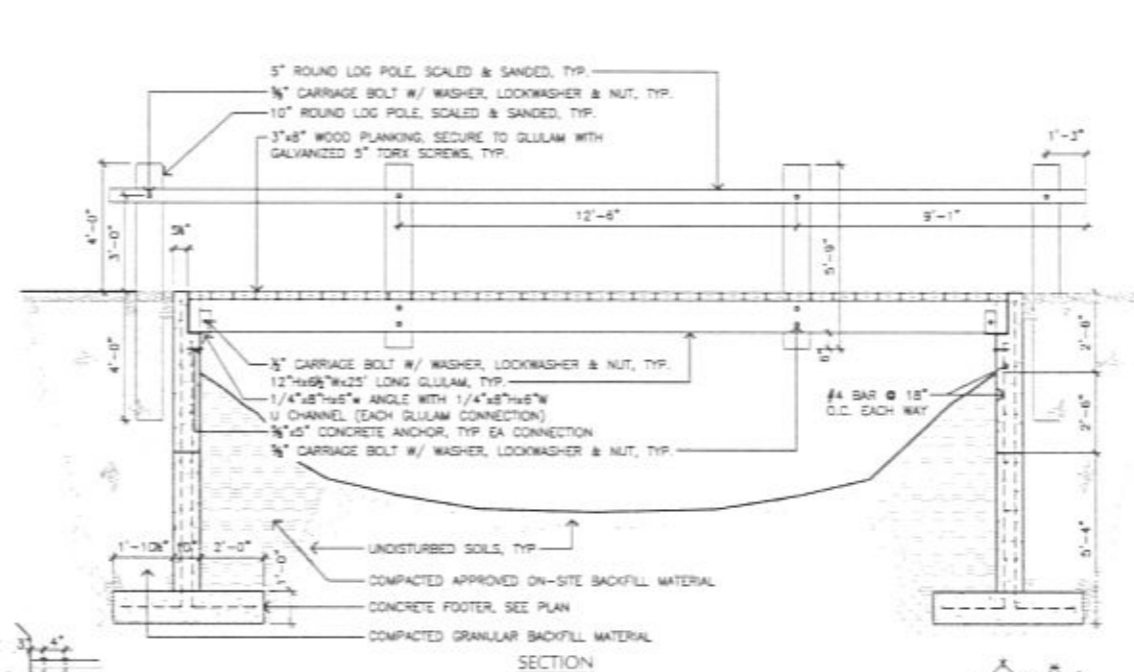


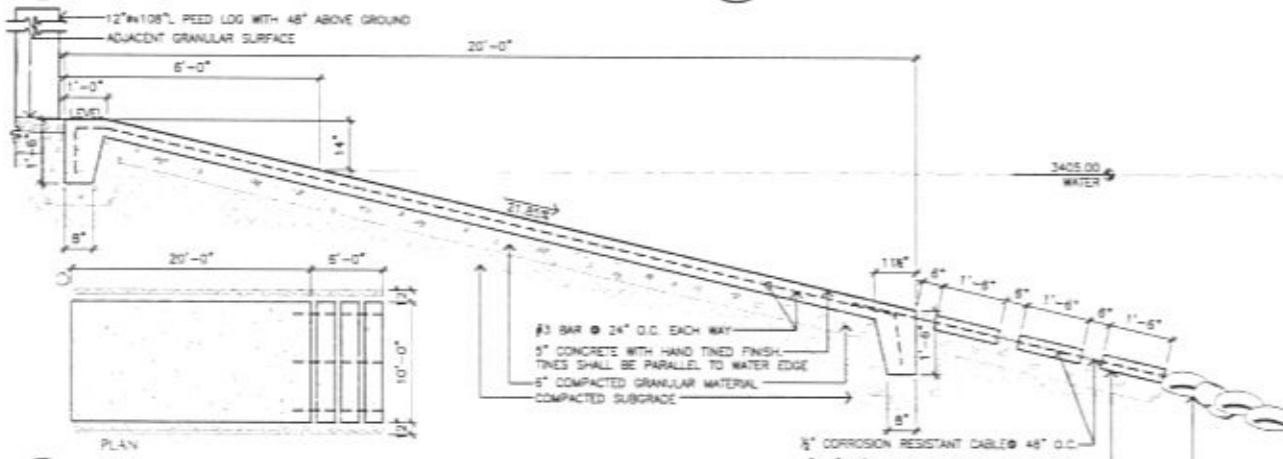
1 SECTION: GUARD RAIL AT EAST ABUTMENT WALL
SCALE: 3/4" = 1'-0"



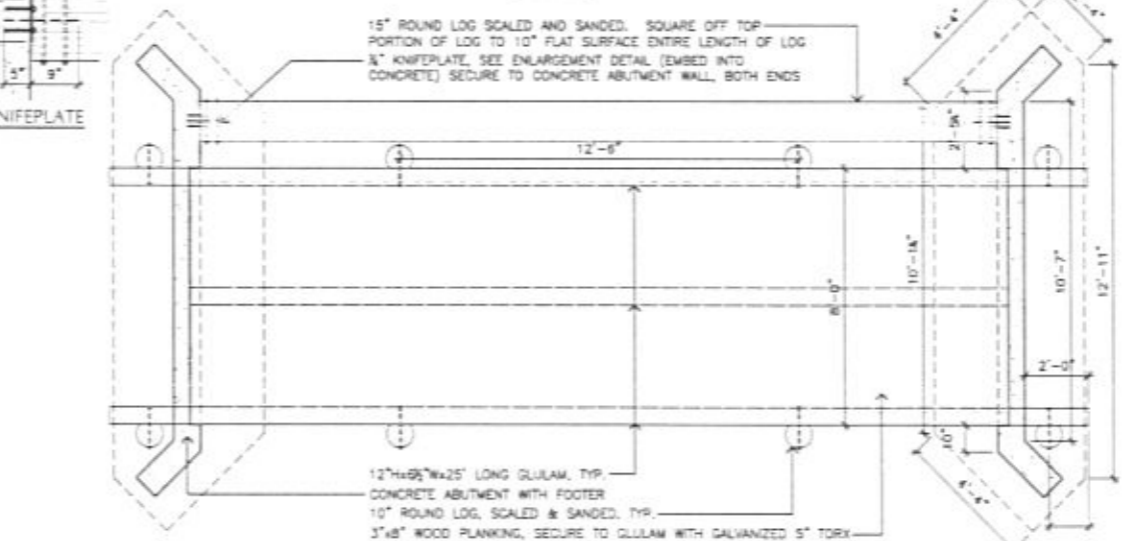
2 SECTION: GRADE WALL
SCALE: 3/4" = 1'-0"



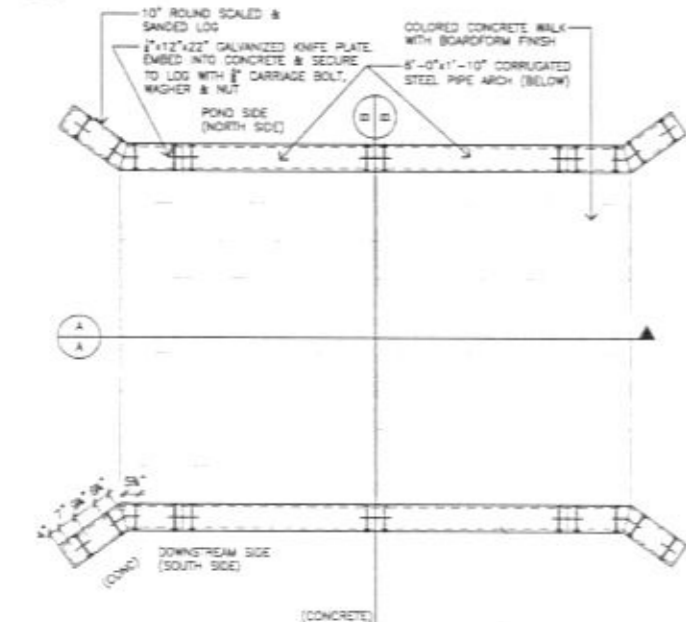
3 SECTION: WALL AT PLAZA
SCALE: 3/4" = 1'-0"



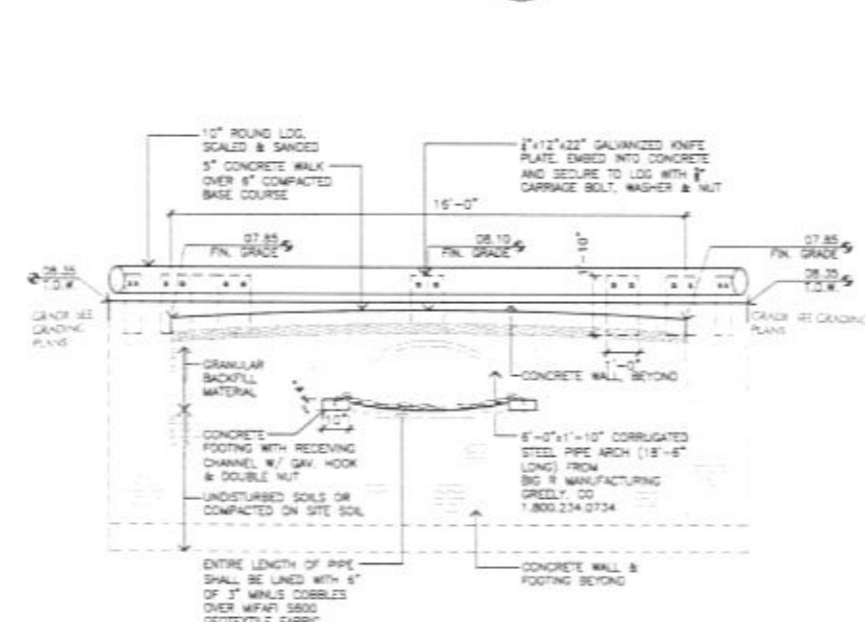
4 SECTION: BOAT RAMP
SCALE: 1/2" = 1'-0"



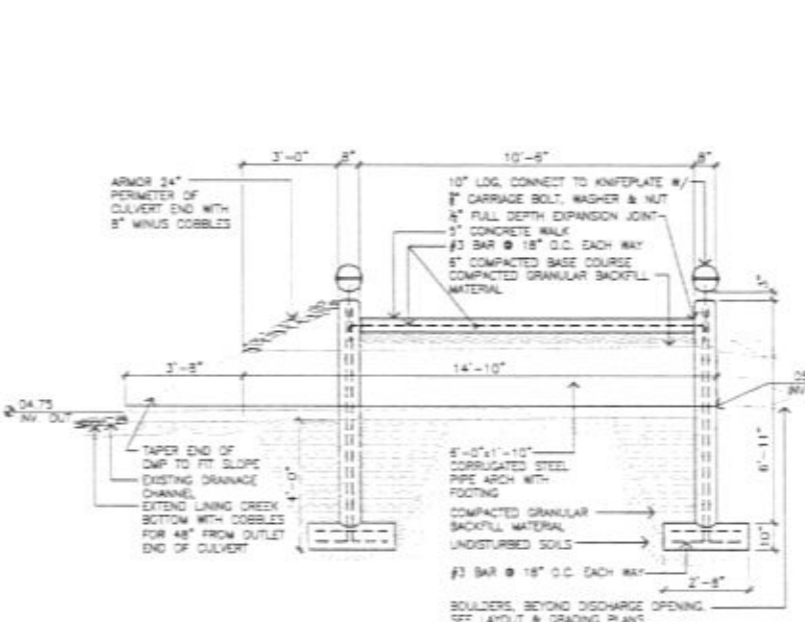
5 DETAIL: SYNAGOGUE BRIDGE
SCALE: 3/8" = 1'-0"



6 DETAILS: ENTRANCE BRIDGE
SCALE: 3/8" = 1'-0"



SECTION A-A



SECTION B-B

ARCHITECT
ARC H I T E C T U R E
I N T E R N A T I O N A L
BRINGING ARCHITECTURE TO YOUR WORLD

CIVIL ENGINEER
FEC Ferber Engineering Company, Inc.
CONTACT: DAVE MUCK

STRUCTURAL ENGINEER
3202 West Main
Suite C
Rapid City, South Dakota 57702
PHONE: 605.343.9508
CONTACT: DAVID LEPPER

MECHANICAL/ELECTRICAL ENGINEER
WPE WEST PLAINS ENGINEERING INC.
1750 RAND ROAD • RAPID CITY, SD 57702
PHONE: 605.348.7105 • FAX: 605.348.9415
CONTACT: DOUG FETEL
DAVID BEYG

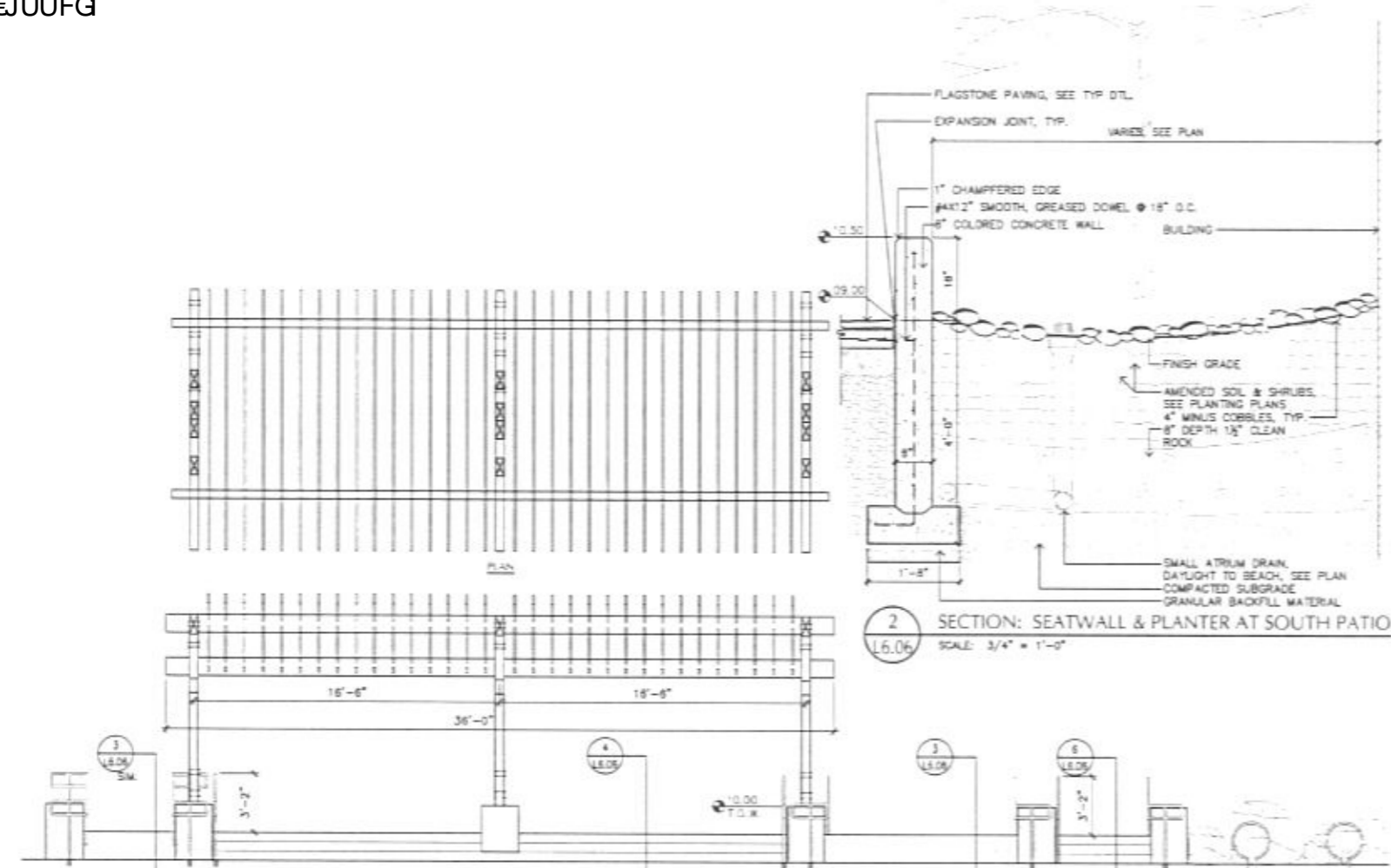
LANDSCAPE ARCHITECT
Wyss Associates, Inc.
CONTACT: MATT FRIEDEL

DATE: NOVEMBER 12, 2009
PROJECT MANAGER: MATTEW D. FRIEDEL
PROJECT NUMBER: 2005-017

REGISTERED LANDSCAPE ARCHITECT
MATT FRIEDEL
11/14/2004

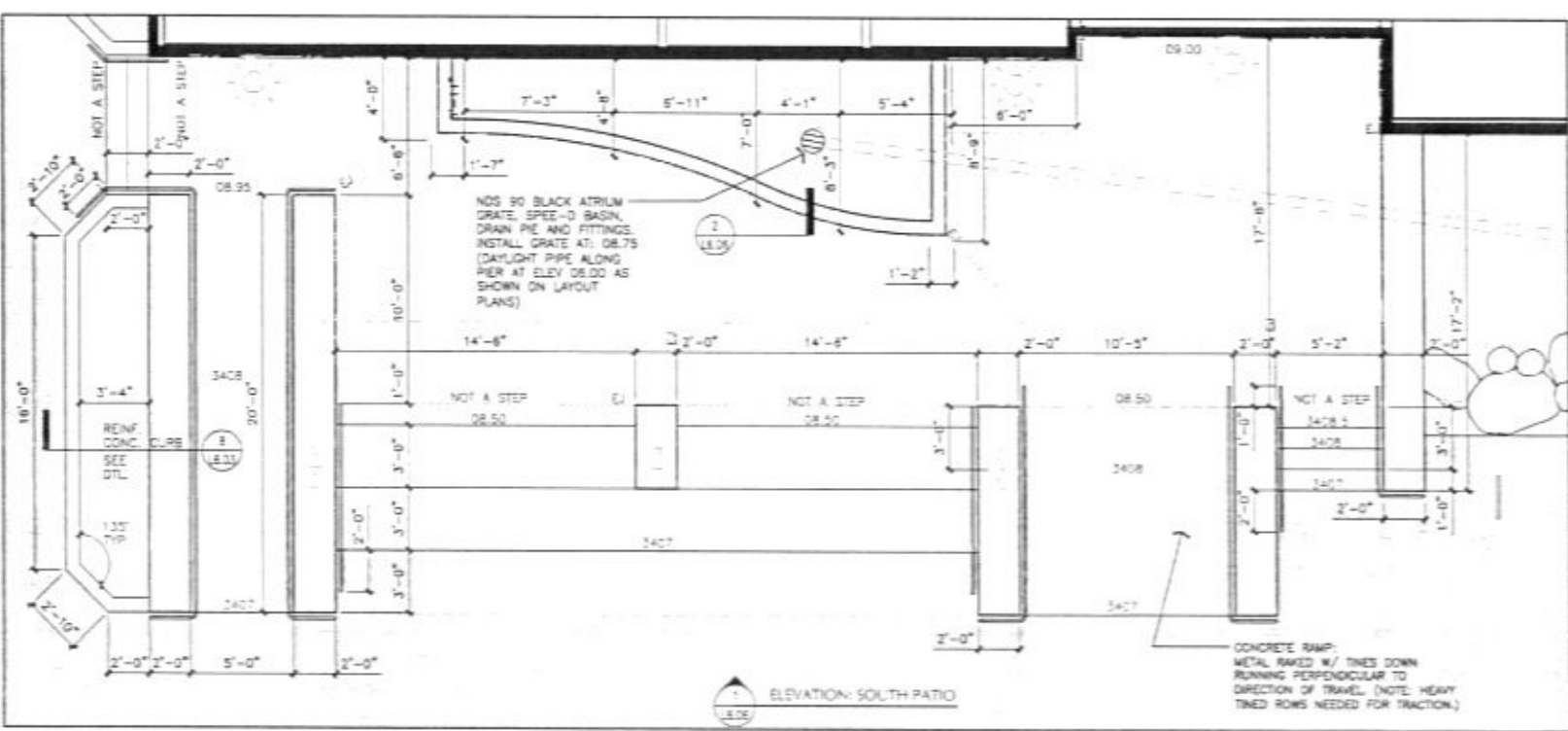
OUTDOOR CAMPUS
South Dakota Game, Fish & Parks
RAPID CITY, SOUTH DAKOTA

SITE DETAILS
L6.05

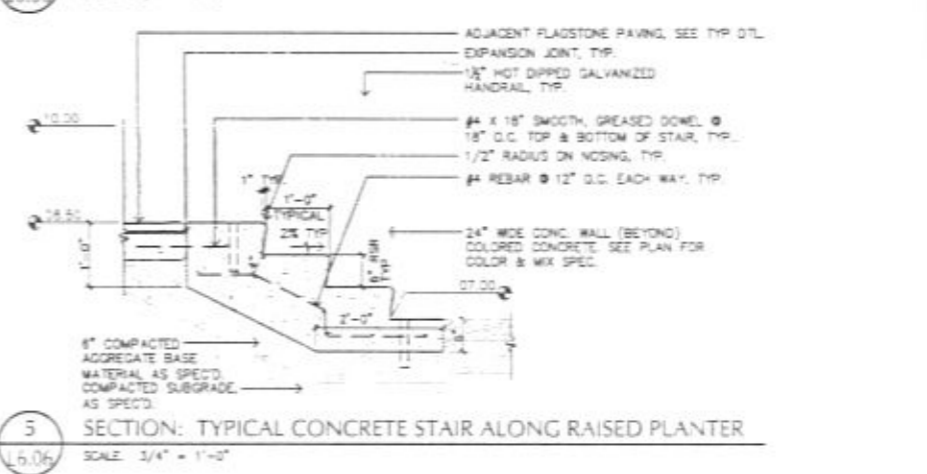
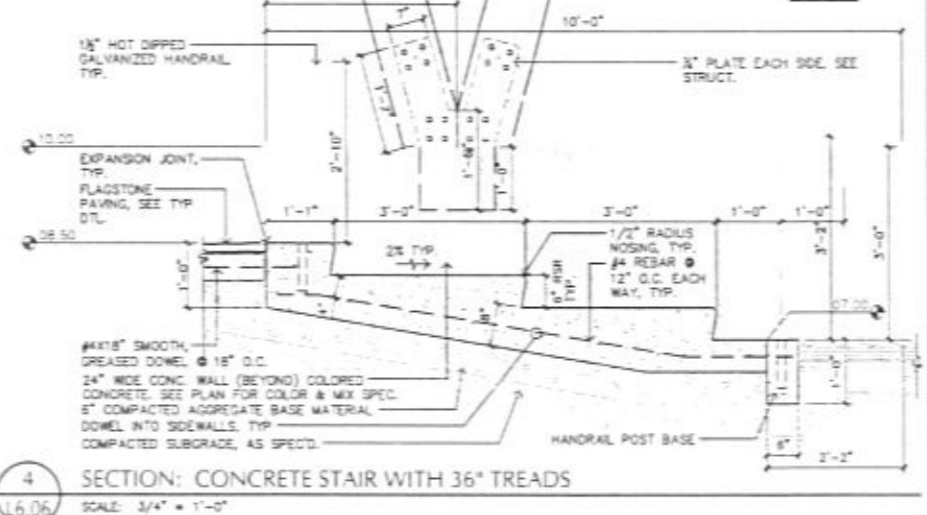
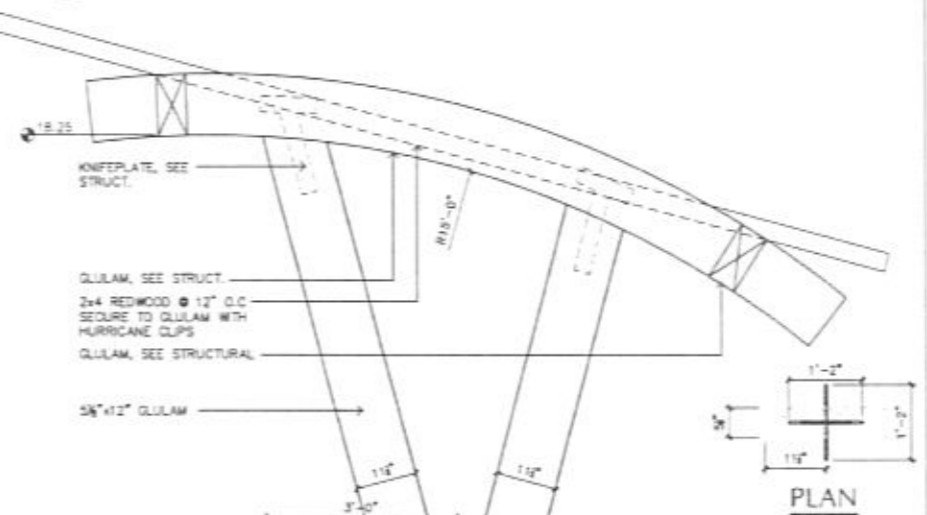
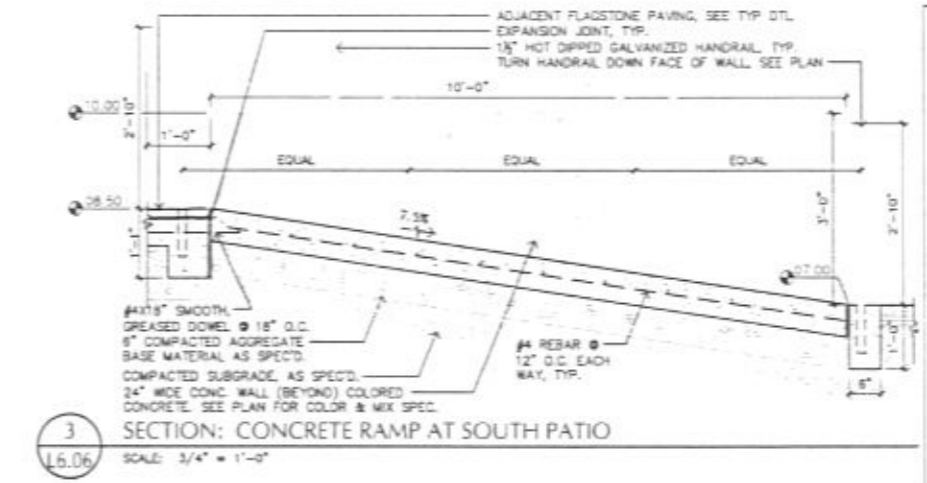


1 ELEVATION: SOUTH PATIO
SCALE: 1/4" = 1'-0"

2 SECTION: SEATWALL & PLANTER AT SOUTH PATIO
SCALE: 3/4" = 1'-0"



2 SOUTH PATIO
SCALE: 1/4" = 1'-0"



5 SECTION: TYPICAL CONCRETE STAIR ALONG RAISED PLANTER
SCALE: 3/4" = 1'-0"

ARCHITECT:
ARC HITECTURE INTERNATIONAL
888 HERMAN LAKE ROAD, SUITE 201, RAPID CITY, SD 57702
TEL: 605.343.8808 FAX: 605.343.8808
WWW.ARC4TH.COM
BRINGING ARCHITECTURE TO YOUR WORLD

CIVIL ENGINEER:
Ferber Engineering Company, Inc.
2001 W. 10TH STREET, SUITE 100, RAPID CITY, SD 57702
TEL: 605.343.8808 FAX: 605.343.8808
WWW.FERBERENGINEERING.COM
CONTACT: DAVE MUCK

STRUCTURAL ENGINEER:
Albertson Engineering Inc.
3202 West Main, Suite C, Rapid City, South Dakota 57702
TEL: 605.343.8808 FAX: 605.343.8808
WWW.ALBERTSONENGINEERING.COM
CONTACT: DAVID LEFFERT

MECHANICAL/ELECTRICAL ENGINEER:
WEST PLAINS ENGINEERING, INC.
1700 RAND ROAD, RAPID CITY, SD 57702
PHONE: 605.348.7488 FAX: 605.348.3443
WWW.WESTPLAINSENGINEERING.COM
CONTACT: DOUG FETTER, DAVID BERG

LANDSCAPE ARCHITECT:
Wyss Associates, Inc.
1000 W. 10TH STREET, SUITE 100, RAPID CITY, SD 57702
TEL: 605.343.8808 FAX: 605.343.8808
WWW.WYSSASSOCIATES.COM
CONTACT: MATT FRIEDEL

DATE: NOVEMBER 12, 2009
PROJECT MANAGER: MATTHEW D. FRIEDEL
PROJECT NUMBER: 2005-017

REGISTERED LANDSCAPE ARCHITECT
MATT FRIEDEL
NOVEMBER 12, 2009

OUTDOOR CAMPUS
South Dakota Game, Fish & Parks
RAPID CITY, SOUTH DAKOTA

SITE DETAILS

L6.06