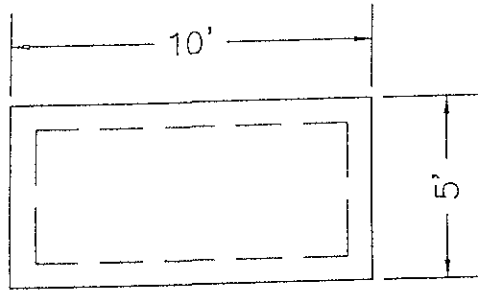


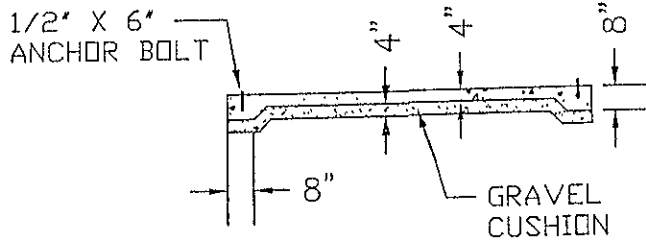
STANDARD SHELTER FOUNDATION



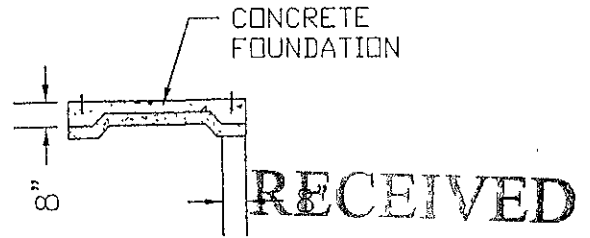
PLAN

NOTE:
ANCHOR BOLTS TO
MATCH HOLES IN
SHELTER WALLS

ALL CONCRETE SHALL
BE M6



FRONT

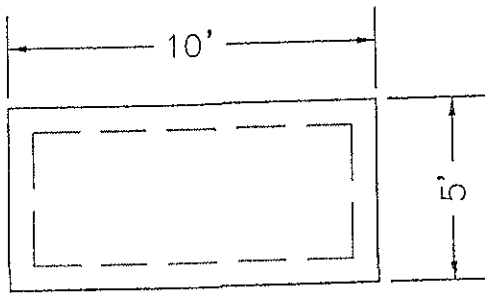


SIDE

DEC 21 2009

Rapid City Growth
Management Department

FOUNDATION WITH BACK WALL

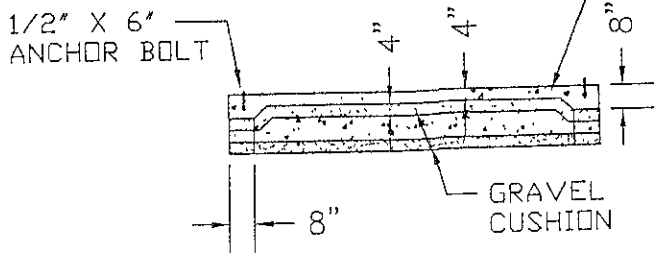


PLAN

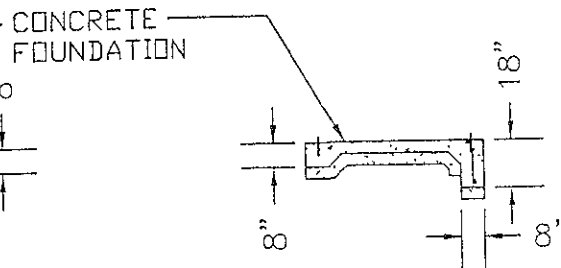
NOTE:
ANCHOR BOLTS TO MATCH
HOLES IN SHELTER WALLS

ALL CONCRETE SHALL BE M6

WALL REINFORCING STEEL:
#4 REBAR @ 15" O.C. VERT.
2-#4 REBAR HORIZ.
MAINTAIN 3" CLEARANCE



FRONT



SIDE

D-1