

POINT NOTES

1. STA 1445.54 - 11.00' LT
BORN 25.67' RADUS C & G
T.C. ELEV. = 3415.13
2. STA 2413.33 - 11.00' LT
BORN 33.07' RADUS C & G
BORN 338 C & G
T.C. ELEV. = 3419.31
3. STA 3418.25 - 11.00' LT
BORN 338 C & G
BORN 33.07' RADUS CURB PALET
T.C. ELEV. = 3420.46
4. STA 4420.01 - 20.00' LT
BORN 33.07' RADUS PALET
T.C. ELEV. = 3418.04
5. STA 4414.52 - 11.00' LT
BORN 33.07' RADUS CURB PALET
T.C. ELEV. = 3421.62
6. STA 4414.84 - 11.00' LT
PALET CORNER
S.P. ELEV. = 3421.21 +/-
MARCH DISTRO
7. STA 1448.84 - 11.00' RT
BORN 77.87' RADUS C & B
T.C. ELEV. = 3415.13

8. STA 2413.03 - 11.00' RT
BORN 77.87' RADUS C & B
BORN 338 C & G
T.C. ELEV. = 3419.31
9. STA 2425.25 - 11.00' RT
BORN 338 C & G
BORN 338 C & G
T.C. ELEV. = 3422.04
10. STA 3413.38 - 22.00' RT
BORN 338 C & G
BORN 338 C & G
T.C. ELEV. = 3420.02
11. STA 3423.31 - 22.00' RT
BORN 338 C & G
BORN 33.07' RADUS CURB PALET
T.C. ELEV. = 3420.17
12. STA 4420.03 - 21.00' RT
BORN 33.07' RADUS PALET
T.C. ELEV. = 3420.21
13. STA 4413.74 - 24.87' RT
BORN 33.07' RADUS CURB PALET
T.C. ELEV. = 3421.45
14. STA 4414.63 - 22.00' RT
PALET CORNER
S.P. ELEV. = 3421.16 +/-
MARCH DISTRO

NOTE

STATIONS, OFFSETS, AND RAIN LISTED ARE TO EDGE OF DEAN LANE UNLESS OTHERWISE NOTED.

ALL CONCRETE CURB AND GUTTER SHOWN IS TYPE B66 UNLESS OTHERWISE NOTED.

THE DEAN LANE ROAD EMBANKMENT REQUIRES APPROXIMATELY 2500 CY OF DIRT FILL. NO COMPENSATION FOR SPURPAGE HAS BEEN MADE.

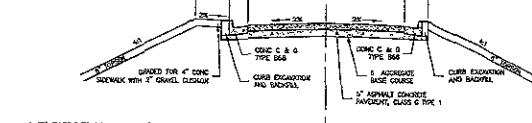
6" CONCRETE RILEY AREA ON 5" AGGREGATE BASE COURSE (DETAIL 60-1)

STATION NUMBER

- | | |
|------------------------|---------------------------------|
| STA 1452.8 - 44.87' RT | INSTALL 10" RC FLARED END. |
| STA 1438.8 - 44.87' RT | INSTALL 36 1/2" - 18" RC PIPE. |
| STA 1450.3 - 12.7' RT | INSTALL TYPE B PALET. |
| STA 1450.3 - 12.7' RT | INSTALL 24 1/2" - 18" RC PIPE. |
| STA 1451.1 - 12.7' LT | INSTALL TYPE B PALET. |
| STA 2422.8 - 34.87' RT | INSTALL 24" RC FLARED END. |
| STA 2422.8 - 34.87' RT | INSTALL 180 1/2" - 24" RC PIPE. |
| STA 2425.3 - 33.87' RT | INSTALL 24" x 36" ROAD. |
| STA 2422.2 - 34.87' RT | INSTALL 24" x 36" ROAD. |
| STA 2422.8 - 34.87' RT | INSTALL 36 1/2" - 24" RC PIPE. |
| STA 2426.1 - 81.2' RT | INSTALL 24" RC SAFETY END. |

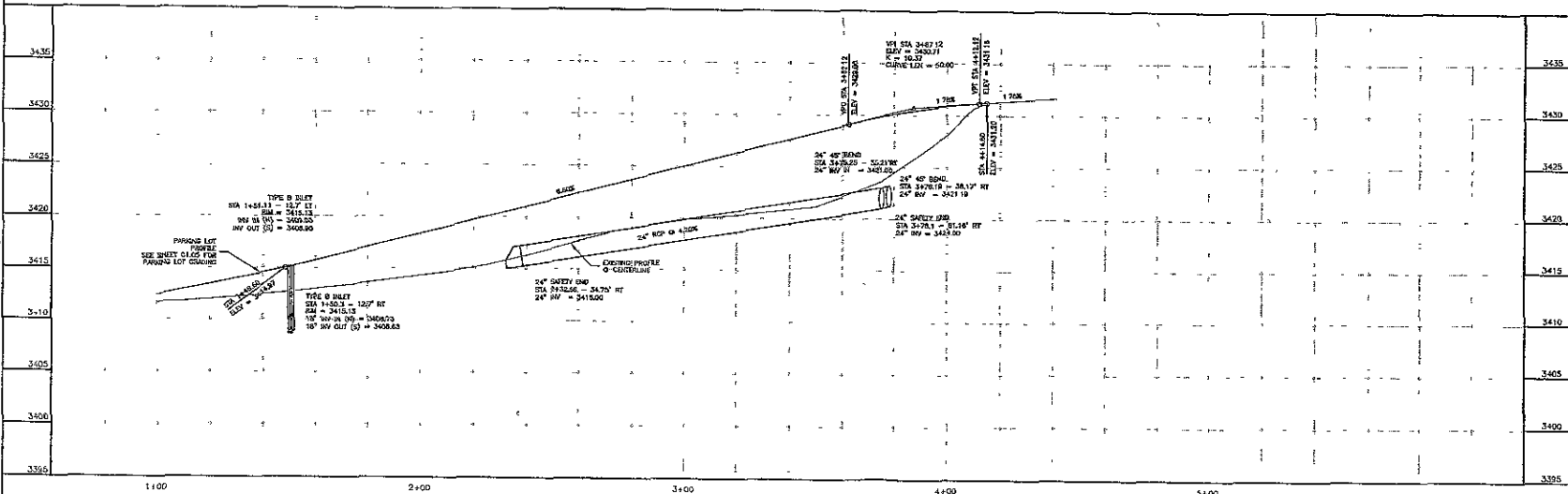
EXISTING CURB ELEVATIONS - POINT BY POINT

STATION	NUMBER	EXISTING CURB ELEVATION	POINT BY POINT
1448	20.00	3415.13	3415.13
2413	20.00	3419.31	3419.31
3418	20.00	3420.46	3420.46



* STA 2453.3 TO STA 3+124 - TRANSITION 11' TO 22'
DEAN LANE TYPICAL SECTION STA 1+48.6 TO STA 4+14.5

THE 20 FT ON SOUTH SIDE ALLOWS FOR FILL SLOPE



ARCHITECTS

ARC HITECTURE INTERNATIONAL

1800 EAST 25TH STREET
SUITE C
RAPID CITY, SOUTH DAKOTA 57701
PHONE: 605-342-2200 FAX: 605-342-2200

BURNING ARCHITECTURE TO YOUR WORLD

CIVIL ENGINEER

Eric Farber
Engineering Company, Inc.

2500 WEST MAIN
SUITE 200
RAPID CITY, SOUTH DAKOTA 57702
PHONE: 605-342-2200 FAX: 605-342-2200

CONTACT DAVID MUECK

STRUCTURAL ENGINEER:

3200 WEST MAIN
SUITE 200
RAPID CITY, SOUTH DAKOTA 57702
PHONE: 605-342-2200 FAX: 605-342-2200

Albertson Engineering Inc.

CONTACT DAVID LEPPERT

MECHANICAL/ELECTRICAL ENGINEER:

WPE
MECHANICAL/ELECTRICAL ENGINEERING

1700 ROAD ROAD - RAPID CITY SD 57702
PHONE: 605-342-2200 FAX: 605-342-2200

CONTACT MICHAEL HENRICH
DAREN BLOCHOFF

LANDSCAPE ARCHITECT:

Wynns Associates, Inc.
730 SOUTH STREET
RAPID CITY, SOUTH DAKOTA 57701
PHONE: 605-342-2200 FAX: 605-342-2200

CONTACT MATT FREDEL

DATE: NOVEMBER 12, 2009

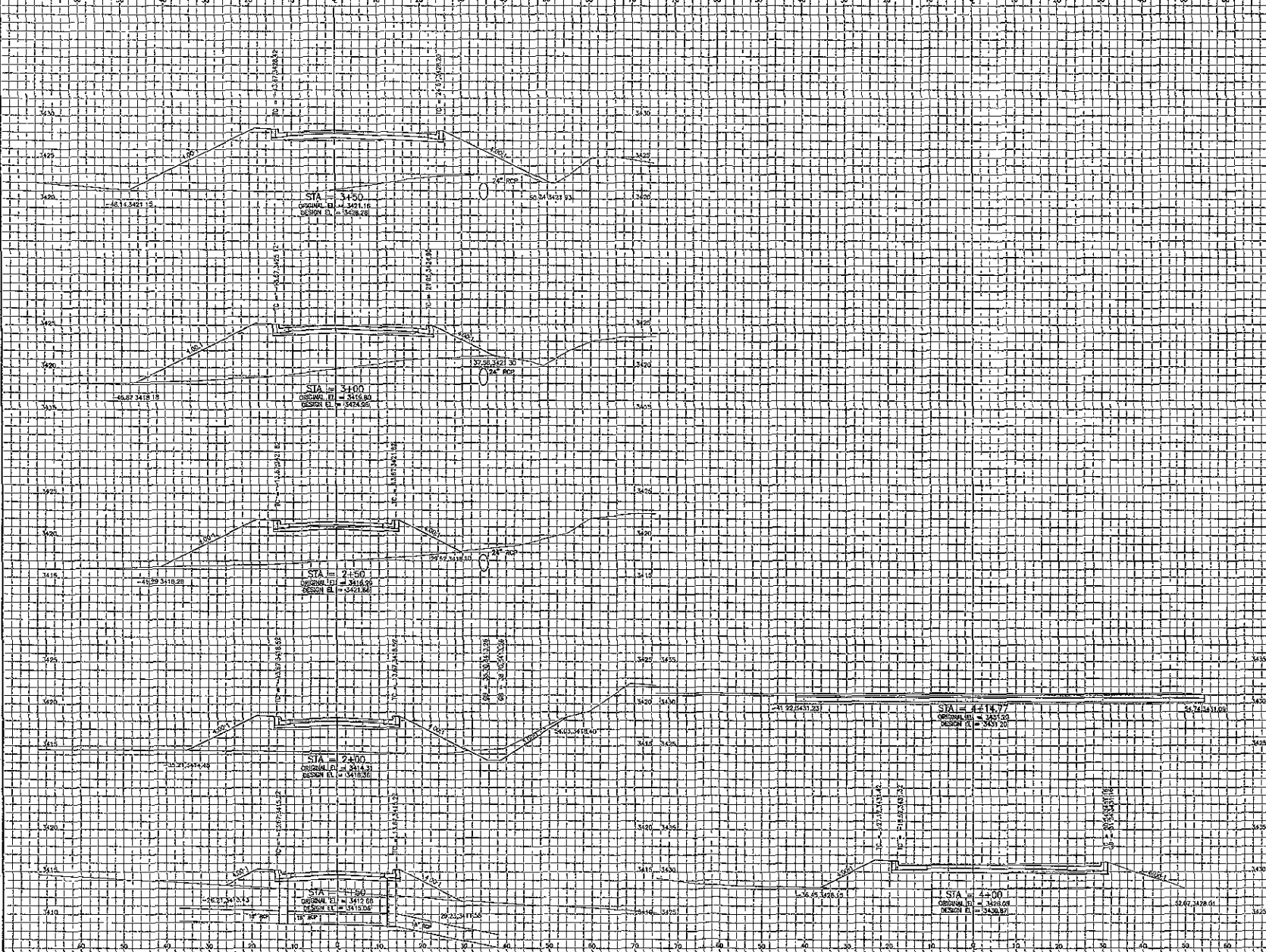
PROJECT MANAGER: JAMES LUSHBOUGH

PROJECT NUMBER: 2005-017

DEAN LANE PLAN & PROFILE

C2.05

11-12-09 P:\SR-117\09SR117.dwg PROJECT: 09SR117 - 11/12/09



ARCHITECT
ARC HITECTURE
 INTERNATIONAL
 1000 WEST 10TH STREET
 SUITE 200
 RAPID CITY, SOUTH DAKOTA 57702
 PHONE: 605.343.6900 FAX: 605.343.6901
 WWW.ARCINTERNATIONAL.COM

CIVIL ENGINEER

Ferber Engineering Company, Inc.
 2212 West Main
 Suite C
 Rapid City, South Dakota 57702
 PHONE: 605.343.6900
 CONTACT: DAVE MUCK

STRUCTURAL ENGINEER:

Albertson Engineering Inc.
 2212 West Main
 Suite C
 Rapid City, South Dakota 57702
 PHONE: 605.343.6900
 CONTACT: DAVID LEPPERT

MECHANICAL/ELECTRICAL ENGINEER:

WFE
 1120 GRAND AVENUE
 SUITE 100
 RAPID CITY, SOUTH DAKOTA 57702
 PHONE: 605.343.7443 FAX: 605.343.4444
 CONTACT: MICHAEL HENRICH
 DASHI REICHERT

LANDSCAPE ARCHITECT

Wyst Associates, Inc.
 228 34th Street
 Rapid City, South Dakota 57701
 PHONE: 605.343.2200 FAX: 605.343.6000
 CONTACT: MATT FROEL

DATE: NOVEMBER 12, 2009
 PROJECT MANAGER: JAMES LUSHBOUGH
 PROJECT NUMBER: 2005-017



DEAN LANE CROSS SECTIONS
C2.06

11-11-09 P:\09-117\09SR117\CrossSections\06\LINE C2.06