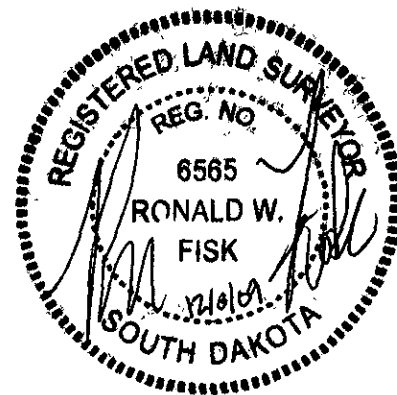
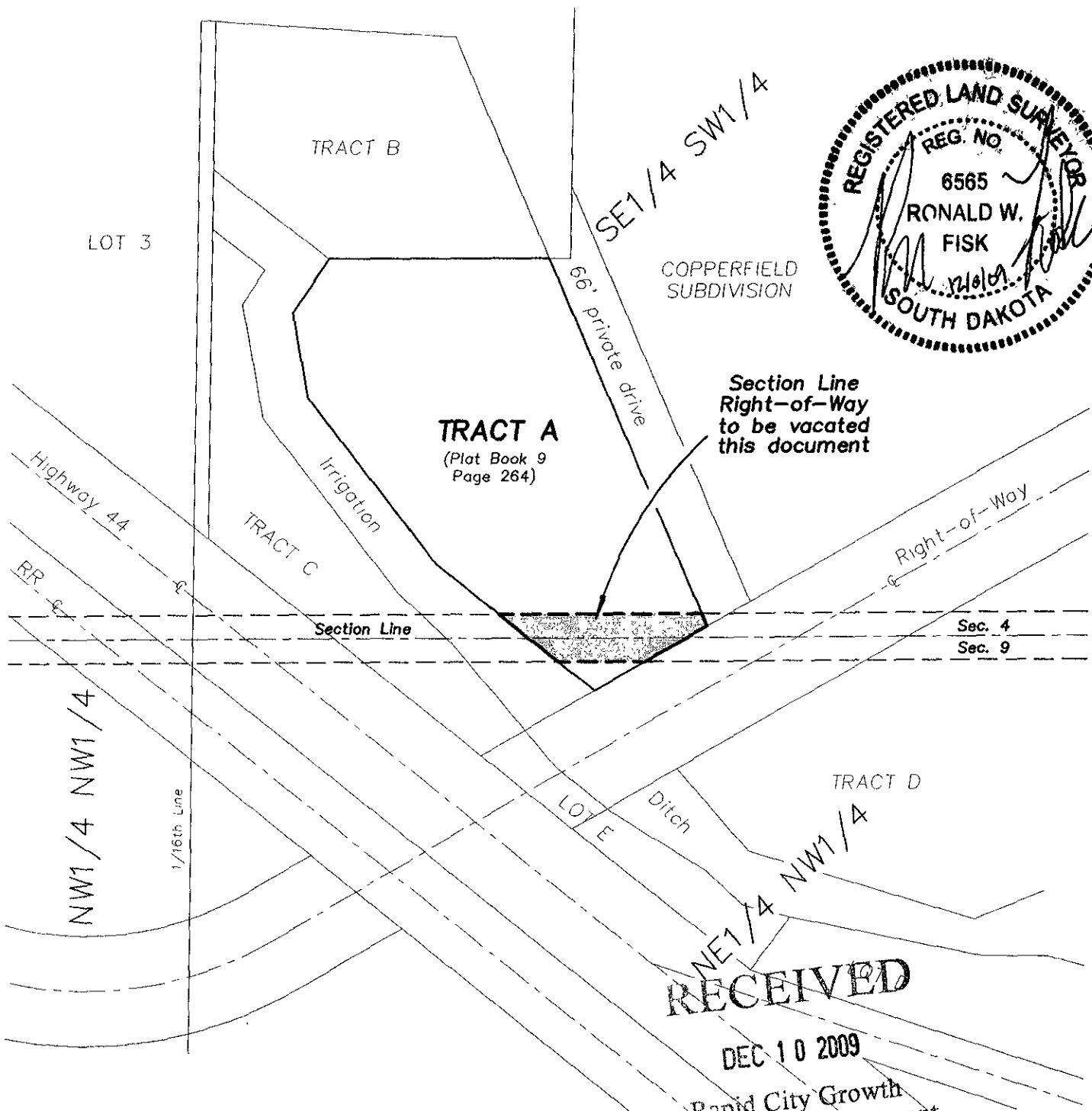


# EXHIBIT A

VACATION OF SECTION LINE RIGHT-OF-WAY  
TRACT A, LOCATED IN SE1/4 SW1/4 SECTION 4,  
AND IN THE NE1/4 NW1/4 SECTION 9, T1N, R8E, BHM,  
RAPID CITY, PENNINGTON COUNTY, SOUTH DAKOTA



1"=200'



Section Line  
Right-of-Way  
to be vacated  
this document

**RECEIVED**

DEC 10 2009

Rapid City Growth  
Management Department