

**NOTES**

BASE BID FOR "BUILDING" PROJECT AREA WITH EXCEPTIONS OFF-ADD ALTERNATES.

BASE BID FOR "COMPLIANCE DEVELOPMENT" PROJECT AREA W/ EXCEPTIONS OF ADD ALTERNATES.

**LEGENDARY NOTES**

PROPERTY/PROJECT BOUNDARY & CONSTRUCTION SITE LIMITS (L.I.O.)

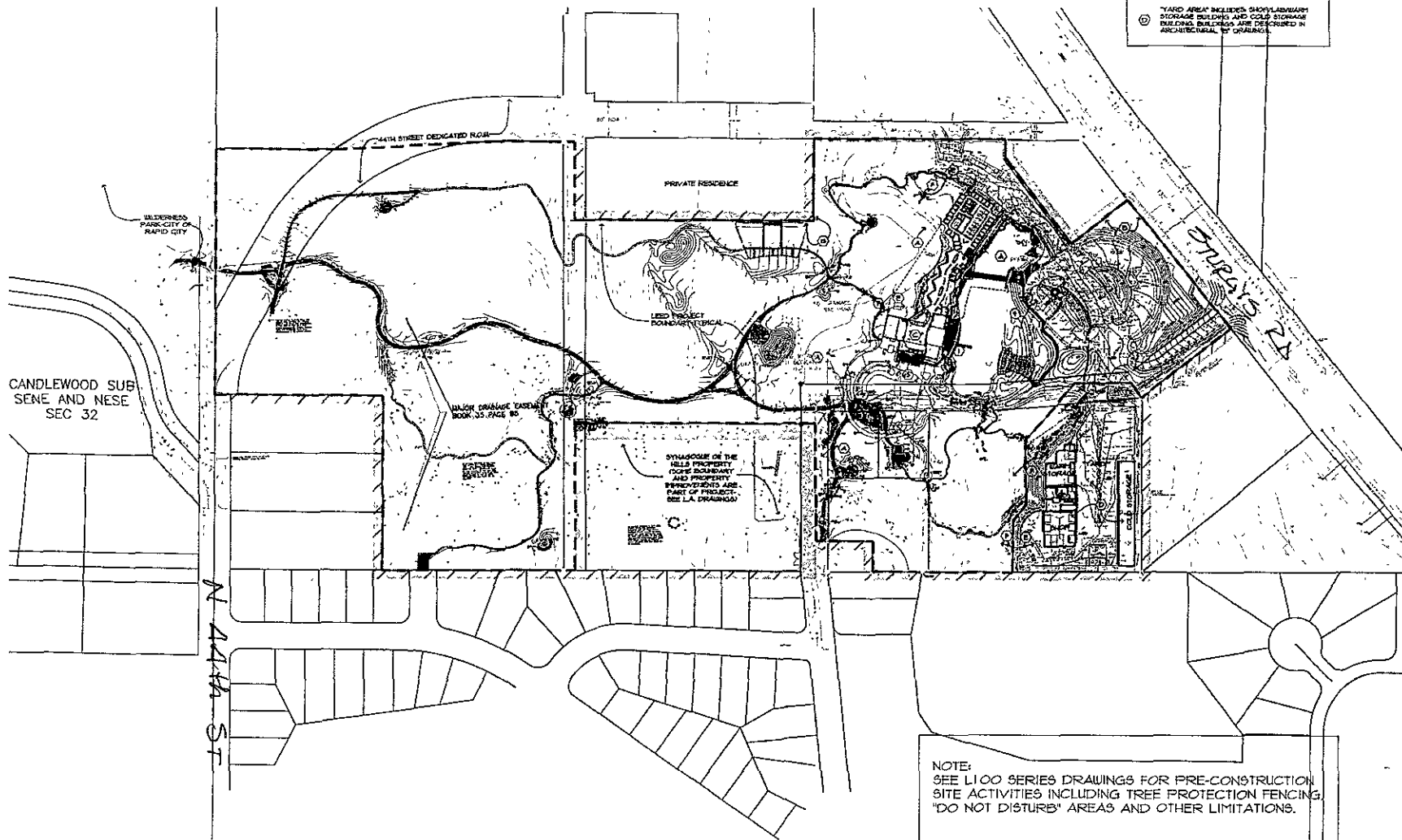
NO CONSTRUCTION BASEMENT ESTABLISHED WITH ADJACENT PROPERTY.

EXISTING WATER FEATURES INCLUDE: PONDS, CREEKS, DRAINAGE CHANNELS, ETC.

LEED PROJECT BOUNDARY (INCLUDES ENTIRE CAMP PROPERTY EXCEPT "TARDY" AREA)

TEAM BUILDING INCLUDES OFFICE AREA, INTERPRETIVE AREA & EDUCATION AREA. BUILDINGS DESCRIBED IN ARCHITECTURAL AT DRAWING.

YARD AREA INCLUDES SHOW/LABORATORY STORAGE BUILDING AND COLD STORAGE BUILDING. BUILDINGS ARE DESCRIBED IN ARCHITECTURAL AT DRAWING.



NOTE:  
SEE L100 SERIES DRAWINGS FOR PRE-CONSTRUCTION SITE ACTIVITIES INCLUDING TREE PROTECTION FENCING, "DO NOT DISTURB" AREAS AND OTHER LIMITATIONS.

1 SITE PLAN  
ALO 11/00-07 NORTH

**ARCHITECTURE INTERNATIONAL**  
 1001 DAWKINS ROAD SUITE 300  
 RAPID CITY, SOUTH DAKOTA 57702  
 CONTACT: JAMES LUSHBOUGH

**CIVIL ENGINEER**  
**Ferber Engineering Company, Inc.**  
 1001 DAWKINS ROAD SUITE 300  
 RAPID CITY, SOUTH DAKOTA 57702  
 CONTACT: DAVE MACK

**STRUCTURAL ENGINEER**  
 3202 WEST MAIN  
 SUITE 27  
 RAPID CITY, SOUTH DAKOTA 57702  
**Albertson Engineering Inc.**  
 CONTACT: DAVID LEPPER

**MECHANICAL/ELECTRICAL ENGINEER**  
**WPE**  
 775 N. UNIVERSITY AVENUE SUITE 100  
 RAPID CITY, SOUTH DAKOTA 57701  
 CONTACT: MICHAEL HENRICH  
 DAKEN BECKLOFF

**LANDSCAPE ARCHITECT**  
**Wynn Associates, Inc.**  
 1001 DAWKINS ROAD SUITE 300  
 RAPID CITY, SOUTH DAKOTA 57702  
 CONTACT: MATT FROBEL

DATE: NOVEMBER 12, 2009  
 PROJECT MANAGER: JAMES LUSHBOUGH  
 PROJECT NUMBER: 2009-017



**THE OUTDOOR CAMPUS**  
 RAPID CITY, SOUTH DAKOTA

SITE PLAN  
**A1.0**

RECEIVED

DEC 11 2009

Rapid City Growth  
 Management

09SR117