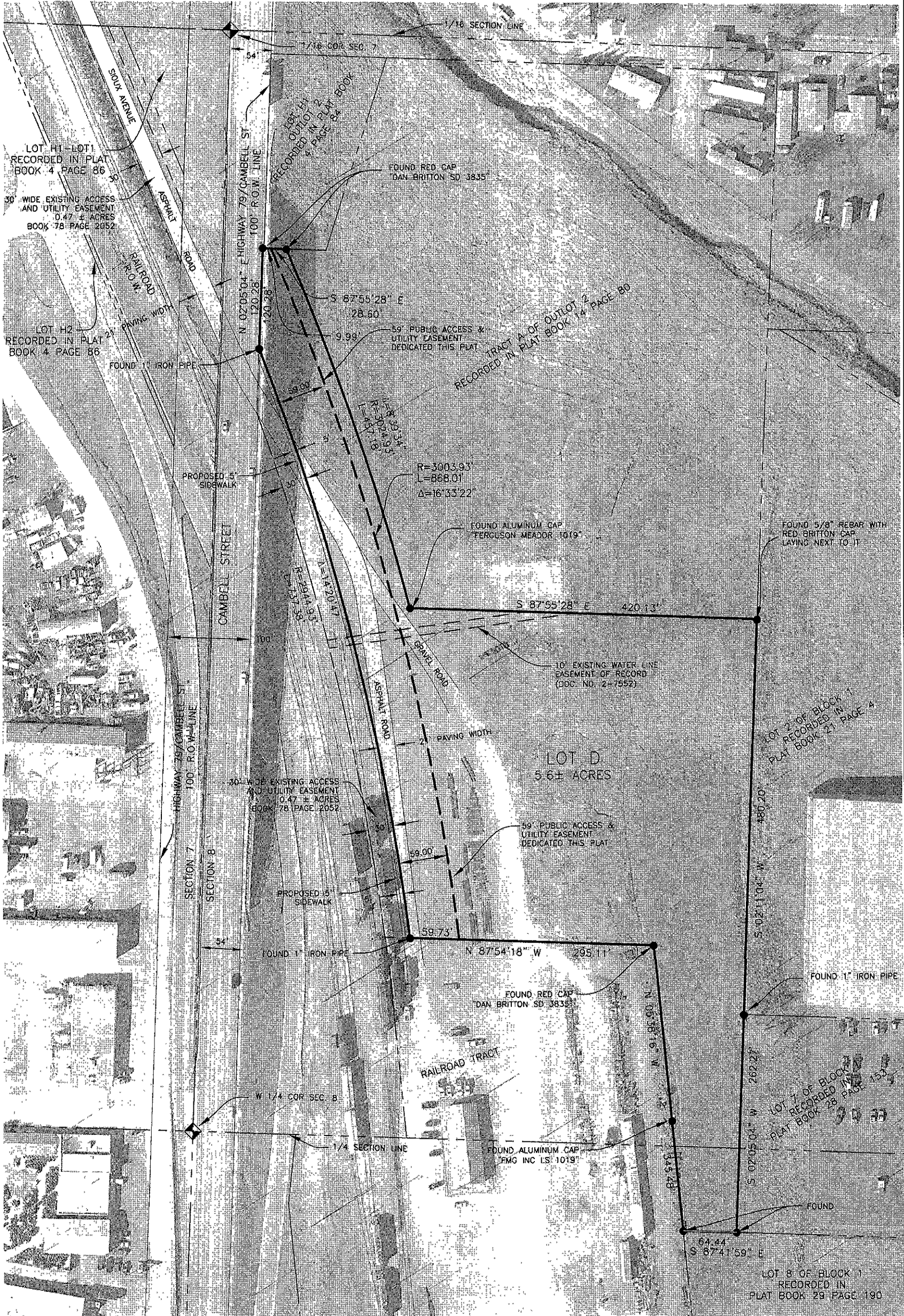


SKETCH PLAT OF LOT D OF BLOCK 1 OF SOUTH CREEK INDUSTRIAL PARK,
 FORMERLY A PORTION OF BLOCK 1 OF SOUTH CREEK INDUSTRIAL PARK
 LOCATED IN THE SW1/4NW1/4 AND THE NW1/4SW1/4 OF SECTION 8, T1N, R8E, B.H.M.,
 RAPID CITY, PENNINGTON COUNTY, SOUTH DAKOTA



80 40 0
 HORIZ SCALE 1"=80'

RECEIVED **FOR REVIEW ONLY**

DEC 29 2009
 Rapid City Growth
 Management Department

Plat prepared by:
 517 7th street rapid city sd 57701
 ph 605.342.9470 fax 605.342.2377
 www.4front.biz

ARCHITECTURE ENGINEERING
 GIS SURVEYING