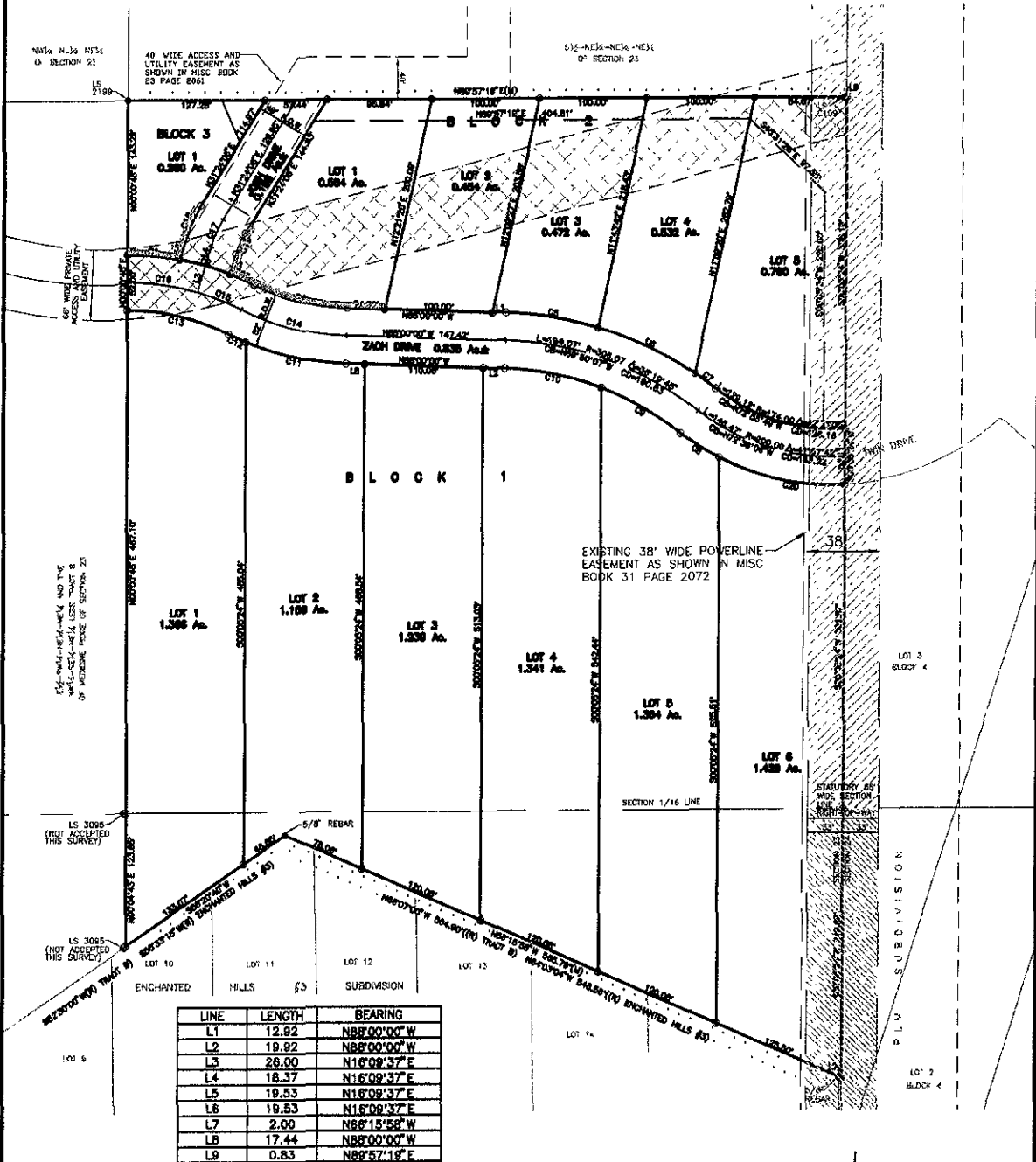


PLAT OF
**LOTS 1 THROUGH 6 OF BLOCK 1, LOTS 1 THROUGH 5 OF BLOCK 2,
 AND LOT 1 OF BLOCK 3,**
MEDICINE RIDGE SUBDIVISION
 LOCATED IN THE SE $\frac{1}{4}$ OF THE NE $\frac{1}{4}$ OF THE NE $\frac{1}{4}$ AND IN THE NE $\frac{1}{4}$ OF THE SE $\frac{1}{4}$ OF THE NE $\frac{1}{4}$,
 SECTION 23, T1N, R7E, BHM
 RAPID CITY, PENNINGTON COUNTY, SOUTH DAKOTA



CURVE	LENGTH	RADIUS	DELTA	CHORD BEARING	CHORD DISTANCE
C1	48.88	259.43	10°43'43"	N84°37'23"W	48.51
C2	49.07	259.43	10°50'16"	N73°50'23"W	49.00
C3	24.71	259.43	6°27'28"	N69°41'31"W	24.70
C4	89.89	205.94	25°02'15"	N75°28'53"W	89.28
C5	87.00	332.07	15°00'40"	N87°29'40"W	86.75
C6	100.00	332.07	17°18'14"	N64°21'45"W	99.62
C7	23.56	332.07	4°03'51"	N53°42'10"W	23.55
C8	42.88	226.00	10°53'44"	N57°07'07"W	42.91
C9	85.28	280.07	17°28'46"	N67°23'38"W	84.95
C10	82.30	280.07	18°52'59"	N78°33'30"W	91.89
C11	95.36	257.84	21°10'58"	N77°24'31"W	94.82
C12	17.35	257.84	3°6'15"	N64°53'24"W	17.35
C13	87.84	207.43	27°01'28"	N76°28'31"W	96.93
C14	101.35	231.94	25°02'15"	N75°28'53"W	100.55
C15	44.31	233.43	10°52'37"	N68°41'05"W	44.25
C16	65.79	233.43	16°08'51"	N81°54'48"W	65.57
C17	27.52	100.44	15°14'29"	N23°48'51"E	27.43
C18	34.03	127.84	19°14'29"	N23°48'51"E	33.93
C19	21.00	78.84	15°14'29"	N23°48'51"E	20.94
C20	120.85	226.00	30°38'14"	N77°53'06"W	119.41

RECEIVED

NOV 25 2009

City Growth Department

FEBRUARY 3, 2009
 N.T.S.