

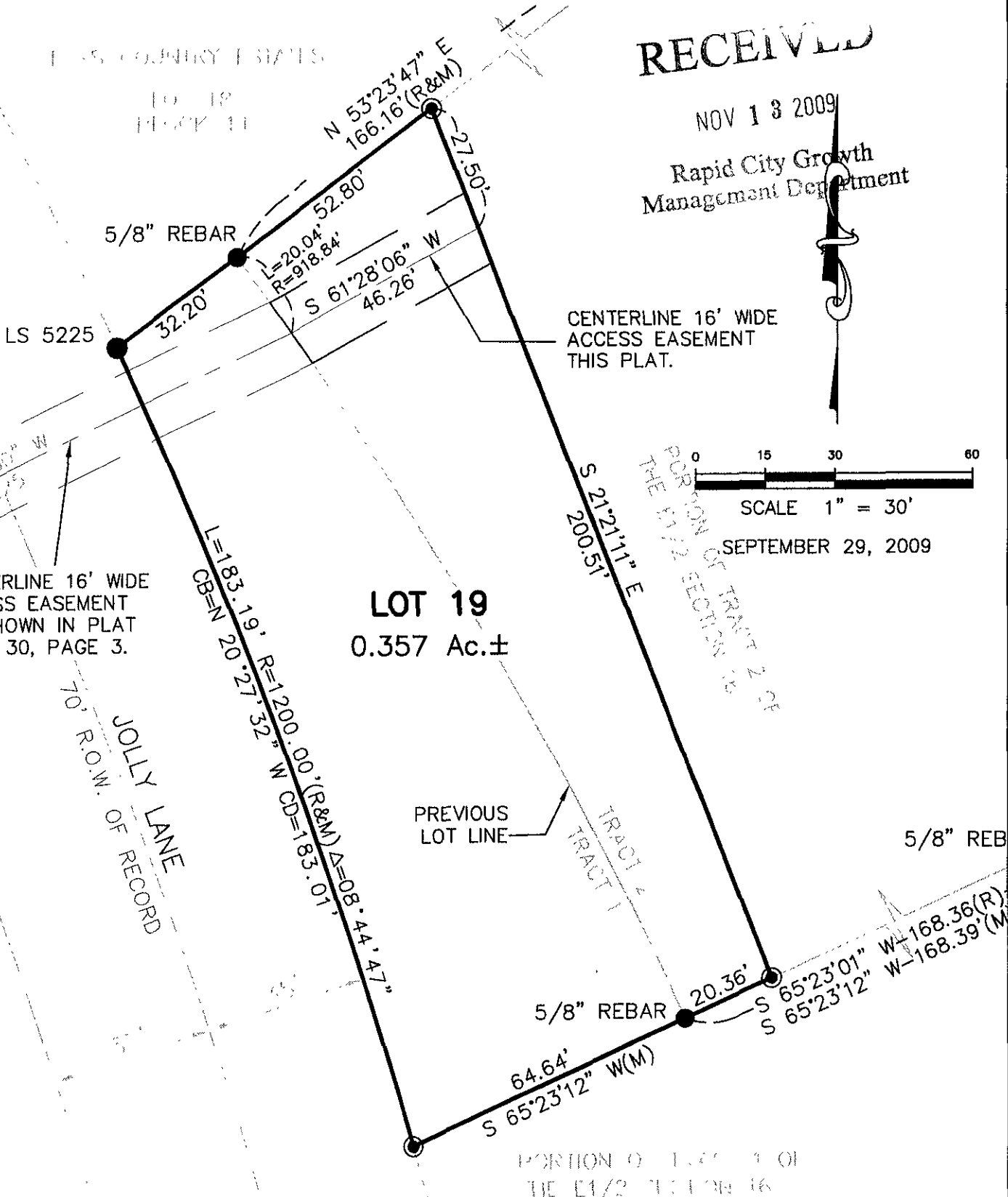
PLAT OF LOT 19 OF BLOCK 11, ELKS COUNTRY ESTATES

(formerly a portion of Tract 1 and a portion of Tract 2)
LOCATED IN THE E/2 SECTION 16, T1N, R8E, B.H.M.,
RAPID CITY, PENNINGTON COUNTY, SOUTH DAKOTA

RECEIVED

NOV 13 2009

Rapid City Growth
Management Department



SCALE 1" = 30'

SEPTEMBER 29, 2009

LOT 19

0.357 Ac.±

CENTERLINE 16' WIDE
ACCESS EASEMENT
AS SHOWN IN PLAT
BOOK 30, PAGE 3.

70' R.O.M. OF RECORD
JOLLY LANE

PREVIOUS
LOT LINE

5/8" REB

5/8" REBAR

D:\Drawings\Eds_Jeff\1260 Lot 19 Blk 11\LOT 19 BLK 11.DWG, 11/02/09 02:17:10 PM, P:1