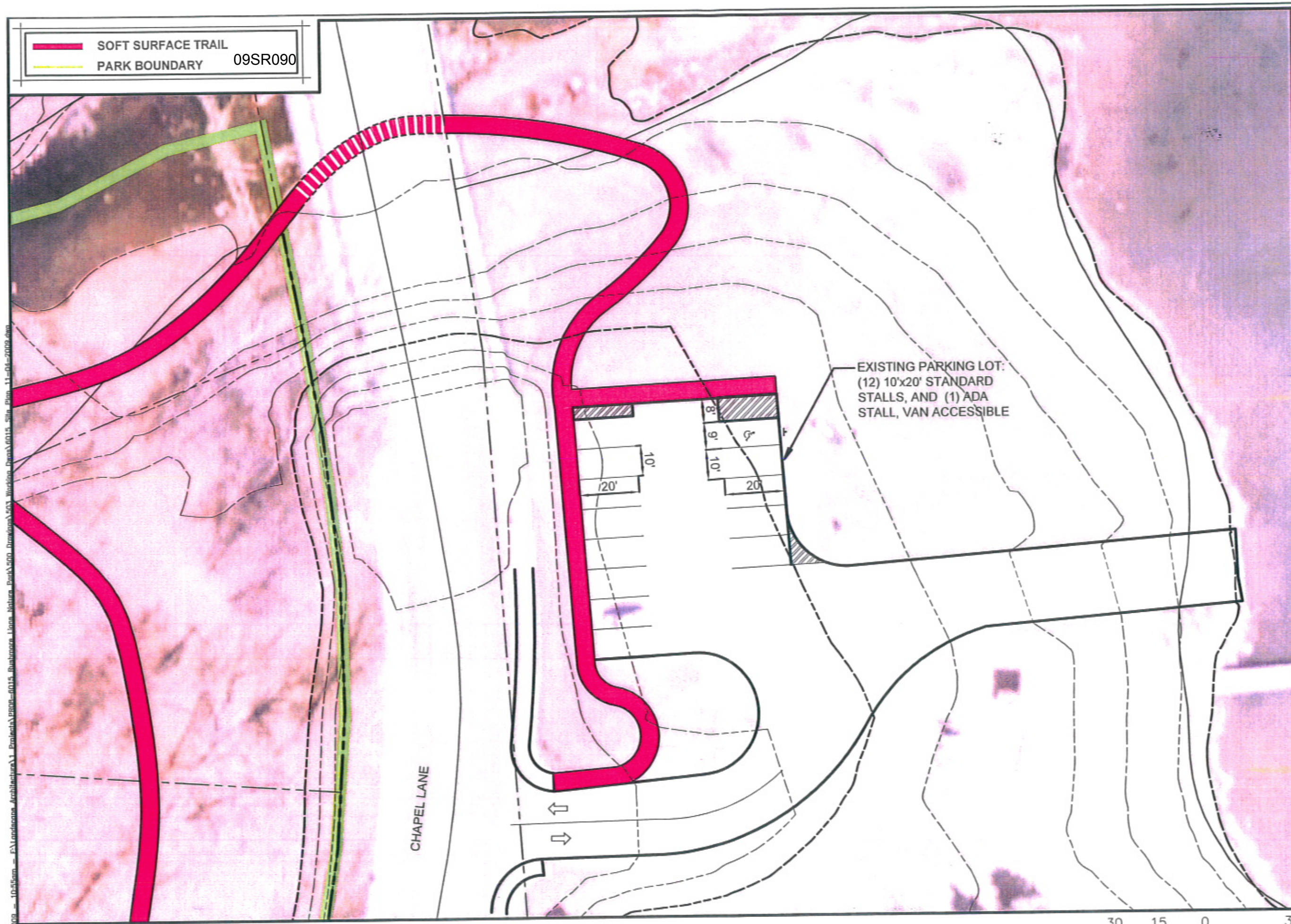
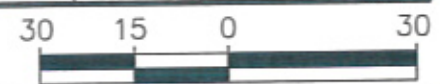


SOFT SURFACE TRAIL
 PARK BOUNDARY 09SR090



EXISTING PARKING LOT:
 (12) 10'x20' STANDARD
 STALLS, AND (1) ADA
 STALL, VAN ACCESSIBLE

CHAPEL LANE



PRELIMINARY - NOT FOR CONSTRUCTION

Rushmore Lions Club Nature Park
 Trail Development

PARKING PLAN

L2 of 5

City of Rapid City
 Parks & Recreation
 LANDSCAPE ARCHITECTURE

PP100-0015

Designed By: RLL	Drawn By: RLL
Design Date: Aug 2008	Print Date:
Internal Job No: PP100-0015	Survey Date:

Rushmore Lions Club Nature Park

Project Number: PR08-6015

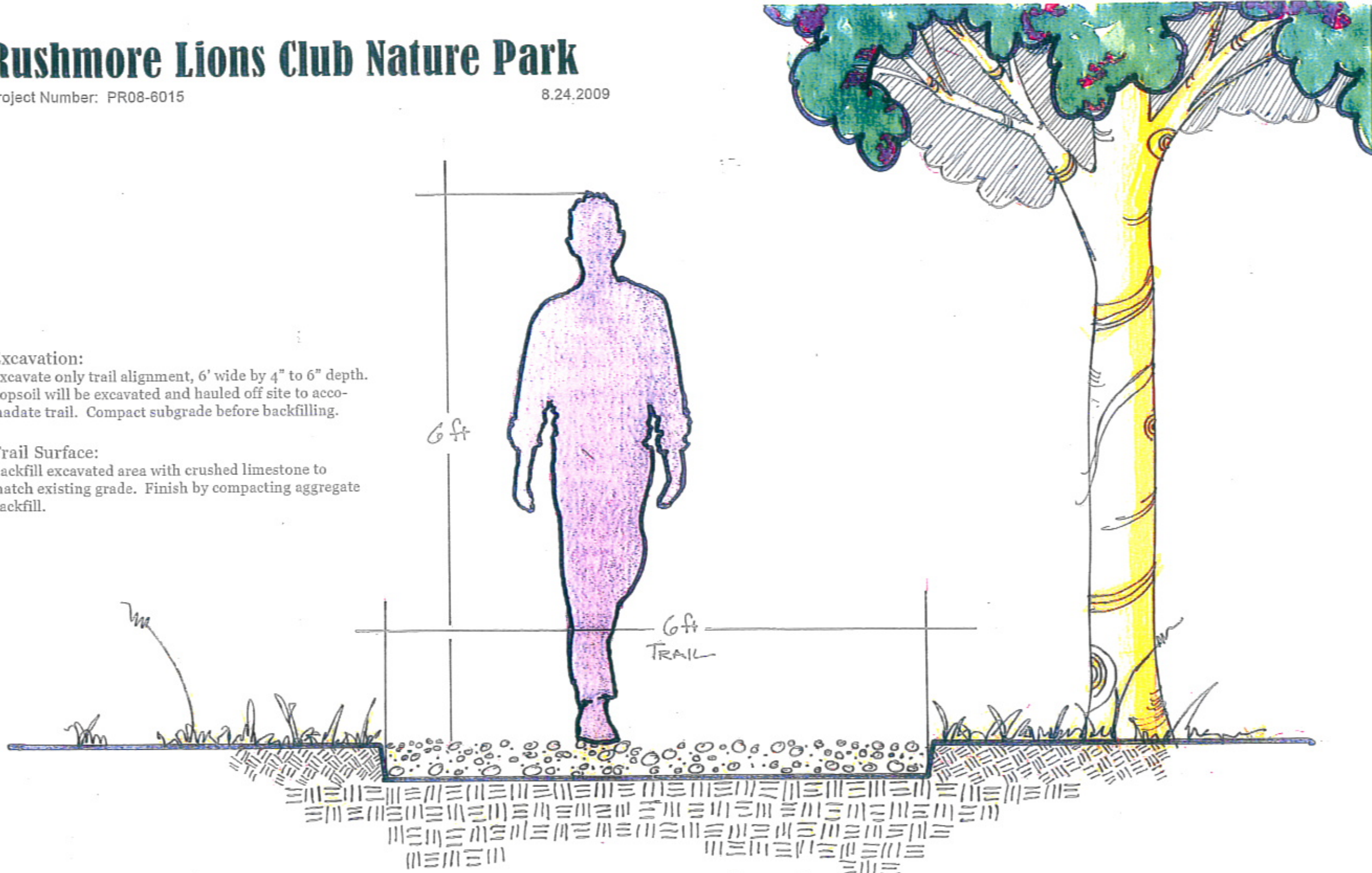
8.24.2009

Excavation:

Excavate only trail alignment, 6' wide by 4" to 6" depth. Topsoil will be excavated and hauled off site to accommodate trail. Compact subgrade before backfilling.

Trail Surface:

Backfill excavated area with crushed limestone to match existing grade. Finish by compacting aggregate backfill.



Typical Trail Section



CITY of RAPID CITY
LANDSCAPE ARCHITECTURE
PARKS & RECREATION

PRELIMINARY - NOT FOR CONSTRUCTION

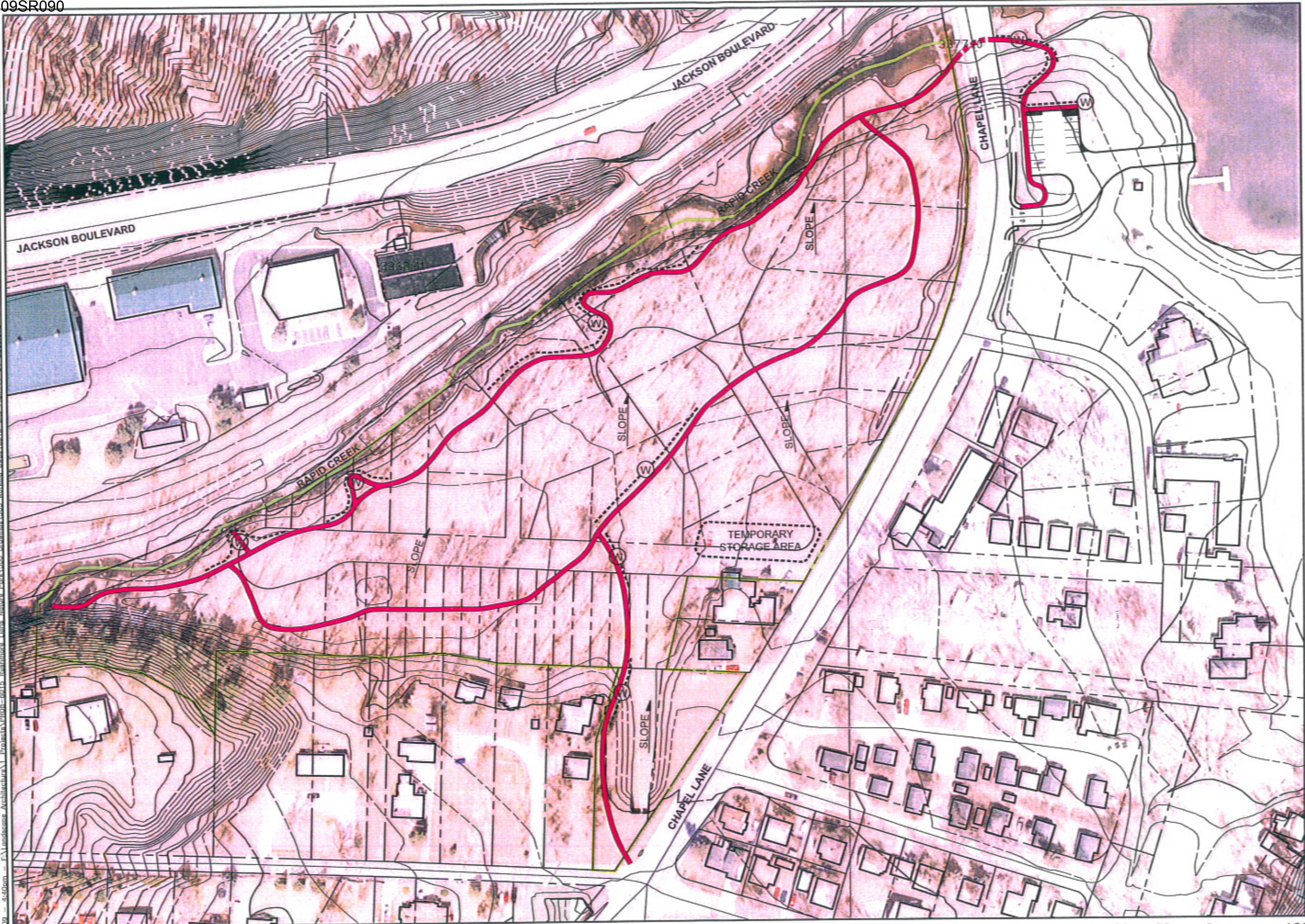
Scale:	
Designed By:	Drawn By:
RLI	RLI
Design Date:	Print Date:
Aug. 2008	
Internal Job No:	
PR08-6015	
Surveyed By:	Survey Date:
Revisions:	

Rushmore Lions Club Nature Park
Trail Development

Sheet Title:
TRAIL DETAIL
Sheet:
L3 of 5

Nov. 12, 2009 11:33am - F:\Landscape Architecture\1 - Project\PR08-6015 - Rushmore Lions Nature Park\500 - Drawings\503 - Working\Drawings\015 - Site Plan - 11-09-2009.dwg

Nov 12, 2009 4:40pm F:\Landscape Architecture\1 - Projects\2009\09015 - Rushmore Lions Nature Park\09015 - Rushmore Lions Nature Park\09015 - Site Plan_11-04-2009.dwg



Prepared For:
CITY OF RAPID CITY
 PARKS & RECREATION
 LANDSCAPE ARCHITECTURE

PRELIMINARY - NOT FOR CONSTRUCTION

Scale:	
Designed By:	Drawn By:
RLL	RLL
Design Date:	Print Date:
Aug 2008	
Internal Job No:	
PROJ-6015	
Surveyed By:	Survey Date:
Revisions:	

Rushmore Lions Club Nature Park
 Trail Development

Sheet Title:	ESCP
Sheet:	L5 of 5

STAGING AREA:
 * ONLY TO BE USED DURING HOURS OF CONSTRUCTION OPERATION. OVERNIGHT STORAGE OF MATERIAL AND/OR EQUIPMENT IS NOT PERMITTED.

