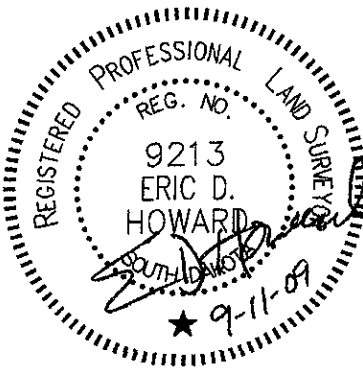
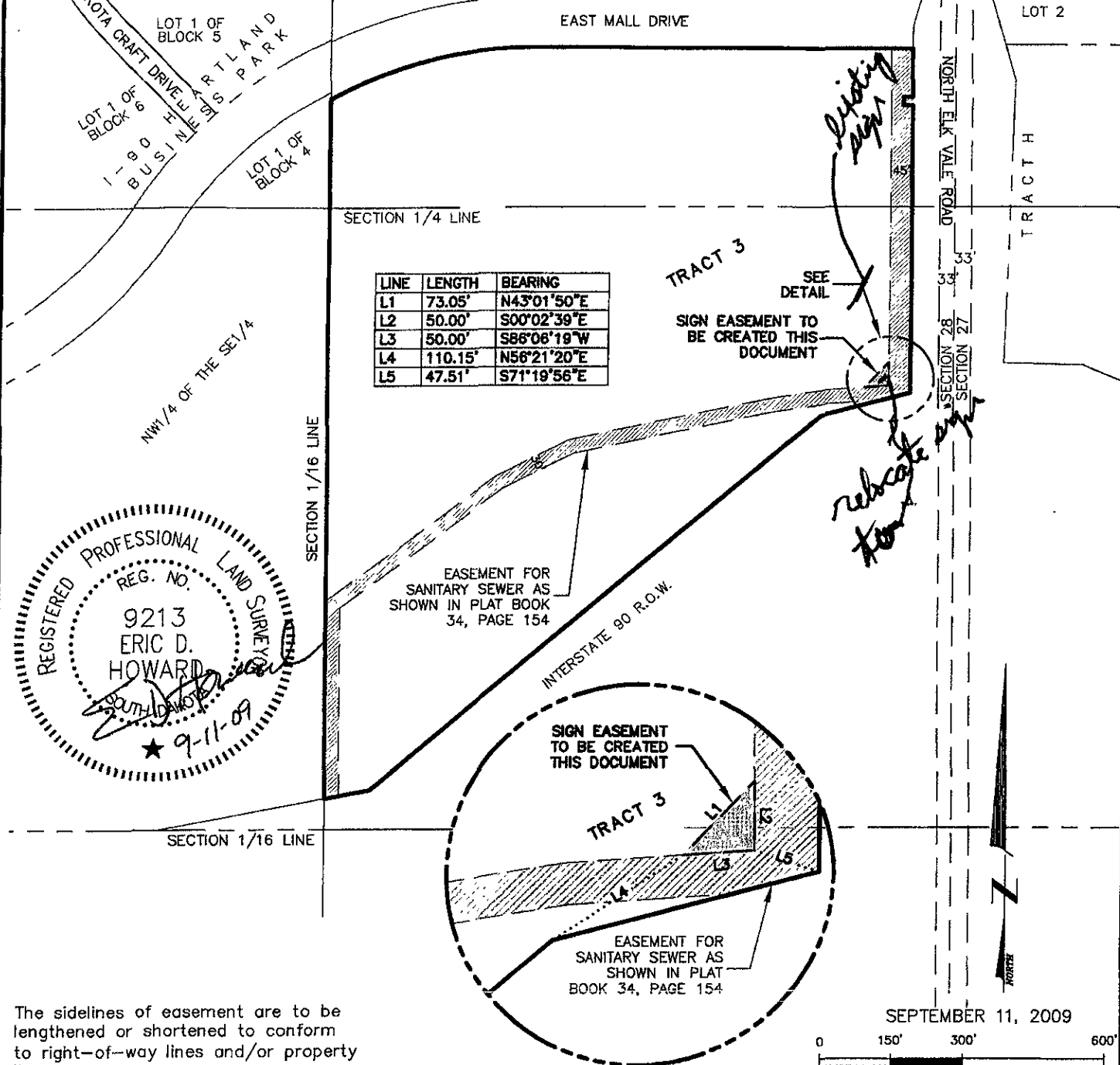


EXHIBIT 'A'

SIGN EASEMENT, TRACT 3 OF DISCOVERY SUBDIVISION

LOCATED IN THE NE1/4 OF THE SE1/4
AND IN THE SE1/4 OF THE NE1/4
SECTION 28, T2N, R8E, BHM

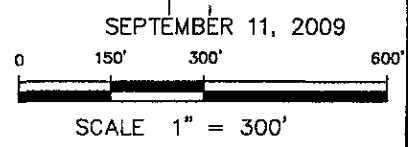
RAPID CITY, PENNINGTON COUNTY, SOUTH DAKOTA



The sidelines of easement are to be lengthened or shortened to conform to right-of-way lines and/or property lines.



CITY HALL 1903



DETAIL
SCALE 1" = 100'

Renner & Associates, LLC.

616 Sixth St. * Rapid City, SD 57701 * 605/721-7310
FAX: 605/721-7313 * E-MAIL: Gary@RennerAssoc.com
* Spearfish 605/717-0016 *