

LEGEND

- NEW CENTER OF EXISTING CURB OR PROPERTY LINE
- LANDSCAPE FRONT OF WAY LINE
- CENTER LINE OF EASEMENT
- CURB VOUCHER
- FOOT CURE LINE
- SEWER LINE
- WATER LINE
- ELECTRIC LINE
- EXISTING POWER LINES
- EXISTING GAS LINE
- NEW UTILITY LINES (AS NOTED)
- UTILITY EASEMENT
- SEE NOTES FOR ELECTRICAL PLANS

LANDSCAPING CALCULATIONS

PHASE I EXISTING CONSTRUCTION PLANNED LANDSCAPE

TOTAL DEVELOPED LOT AREA 45,100 SQ FT
 LANDSCAPE FRONT OF WAY PROVIDED 21,100 POINTS

PHASE I NEW CONSTRUCTION

TOTAL DEVELOPED LOT AREA 47,100 SQ FT
 LANDSCAPE FRONT OF WAY PROVIDED 41,100 POINTS

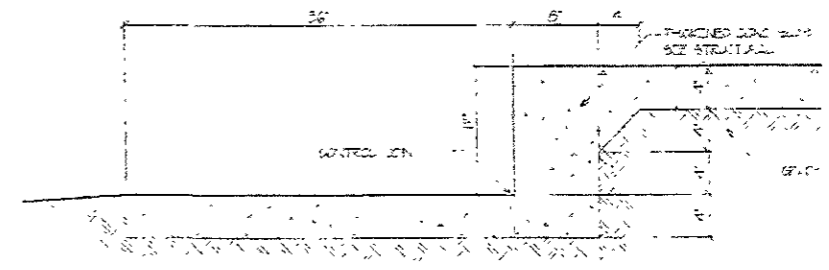
LANDSCAPE POINT ANALYSIS

AMERICAN LINEN 1 @ 2000 POINTS EA = 2000 POINTS
 TREE MELLOW 2 @ 2000 POINTS EA = 4000 POINTS
 GRAND OAK 2 @ 200 POINTS EA = 400 POINTS
 TOTAL 4 @ 2000 POINTS EA = 8000 POINTS

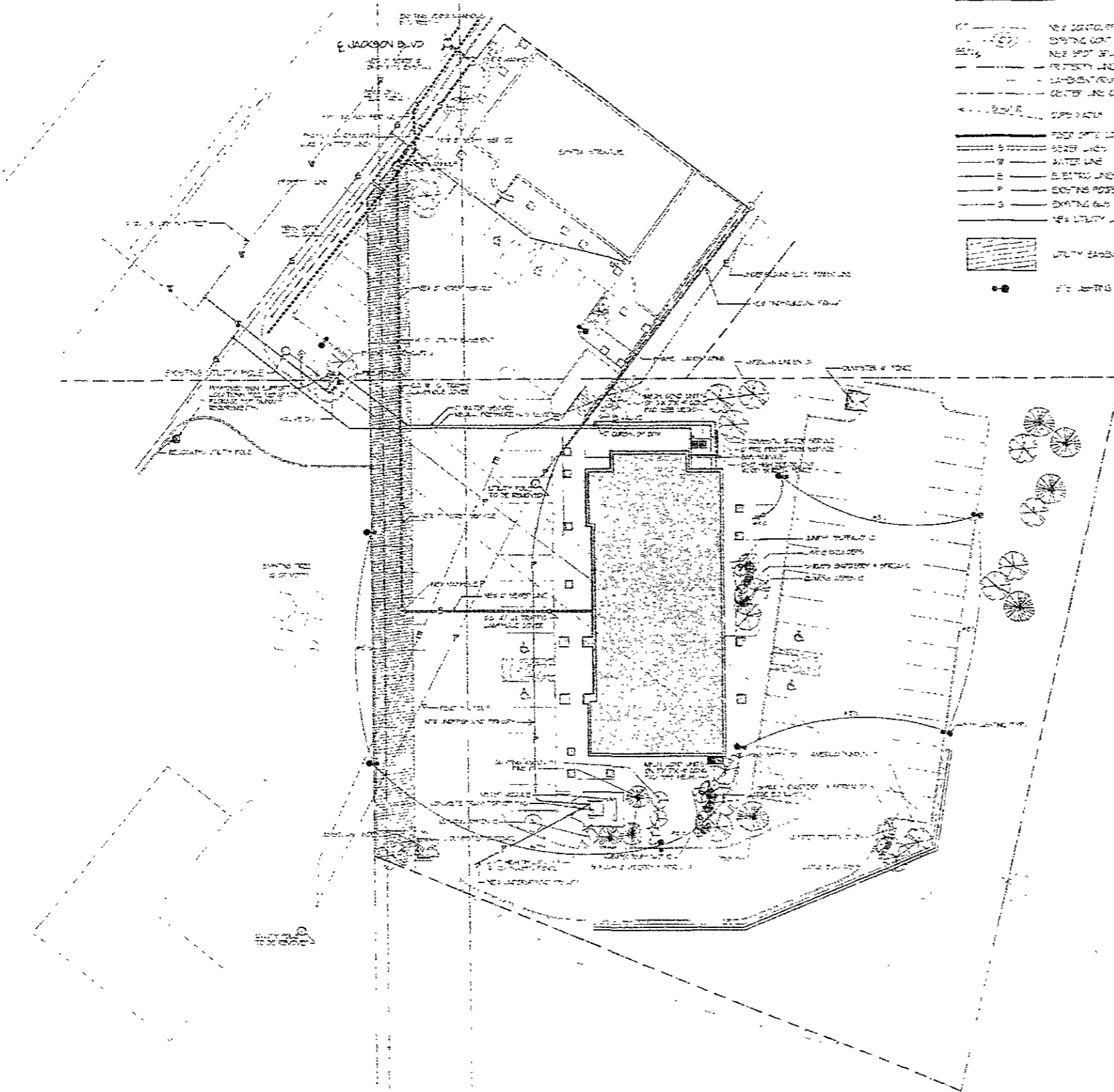
WATER 4 @ 250 POINTS EA = 1000 POINTS
 PINE 7 @ 250 POINTS EA = 1750 POINTS
 POTENTIAL 3 @ 250 POINTS EA = 750 POINTS
 BARBERRY 3 @ 250 POINTS EA = 750 POINTS

NEW SPONGE LAYER 10 YDS @ 300 POINTS YD = 3000 POINTS
 NEW 4" EXPOSED SAND 20 YDS @ 30 POINTS YD = 600 POINTS

TOTAL POINTS PROVIDED 8650 POINTS



1 SIDEWALK EDGE & SLAB SECTION
 SCALE 1/2" = 1'-0"



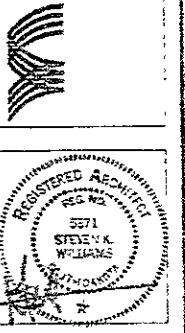
SITE UTILITY & LANDSCAPING PLAN
 SCALE 1/4" = 20'-0"

RECEIVED

NOV 12 2009

Rapid City Growth
 Management Department

**WILLIAMS & ASSOCIATES
 ARCHITECTURE**
 516 N. Canyon St. Spearfish, South Dakota 57783
 Phone (605) 642-2004



Project Title
JACKSON BOULEVARD OFFICE BUILDING
 RAPID CITY, SD

Sheet Title
 Sheet Number
C-2 2