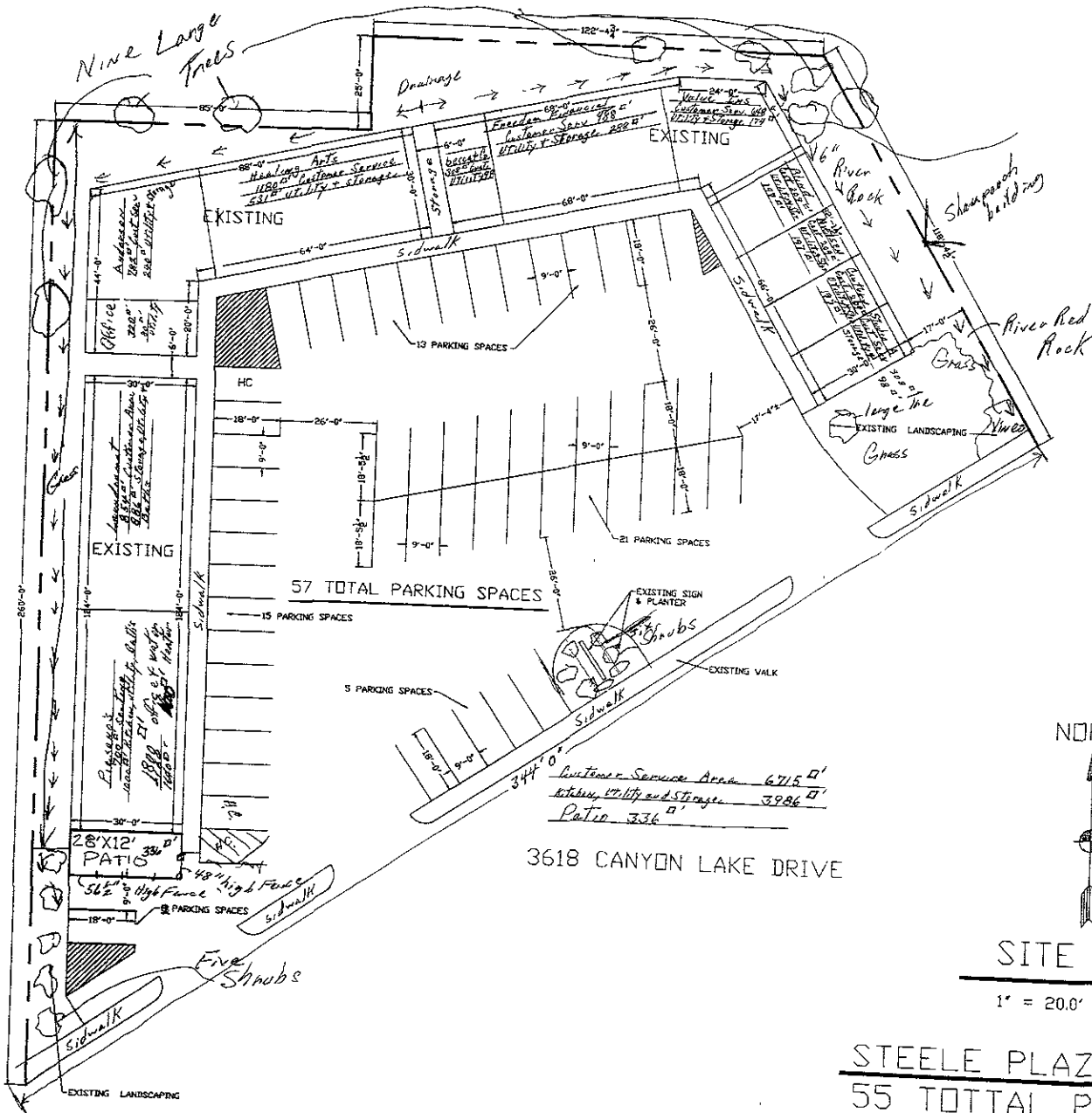


RECEIVED

SEP 16 2009

Rapid City Growth Management Department

WHILE EVERY ATTEMPT HAS BEEN MADE DURING THE PREPARATION OF THESE PLANS TO AVOID MISTAKES, THE MAKER CANNOT GUARANTEE AGAINST HUMAN ERROR. THE CONTRACTOR ON THE JOB MUST CHECK ALL DIMENSIONS AND OTHER DETAILS AND BE RESPONSIBLE FOR THE SAME



NORTH



SITE PLAN

1" = 20.0'

3618 CANYON LAKE DRIVE

STEELE PLAZA
 55 TOTTAL PARKING PLACES
 2 Handicap Parking Places

JIM STEELE CONSTRUCTION
 50837
 BJS
 5-16-08

KNECHT HOME CENTER, INC.
 ACE HARDWARE
330 WEST BOXER RD
 RAPID CITY, SD, 57701
 PHONE: (605) 342-4840
 FAX: (605) 349-0494

Lot less lot 8 A and lot 11 less 1/2 of tract D
 12 less lot A but including lot B of lot 12 of tract D