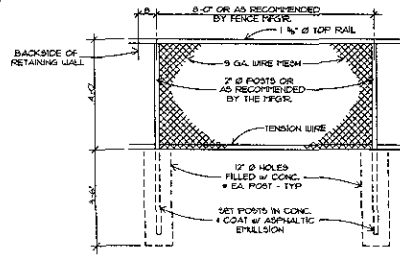


FLOOR PLAN
1/2" = 1'-0"
14314 SF

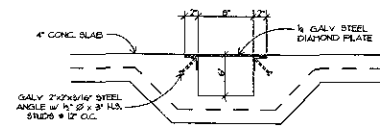


FE INDICATES LOCATION OF BALL POINTED FIRE EXTINGUISHER
----- INDICATES LOCATION OF INSULATED WALLS



NOTE: ALL MATERIALS TO BE GALVANIZED STEEL.

FENCE DETAIL
1/2" = 1'-0"



DRAIN DETAIL
1/2" = 1'-0"

RECEIVED

OCT - 1 2009

Rapid City Growth
Management Department

TERRY R. STOCKER, LTD
13781 EMBURY RD - RAPID CITY, SD 57102-1332 (605) 341-6883

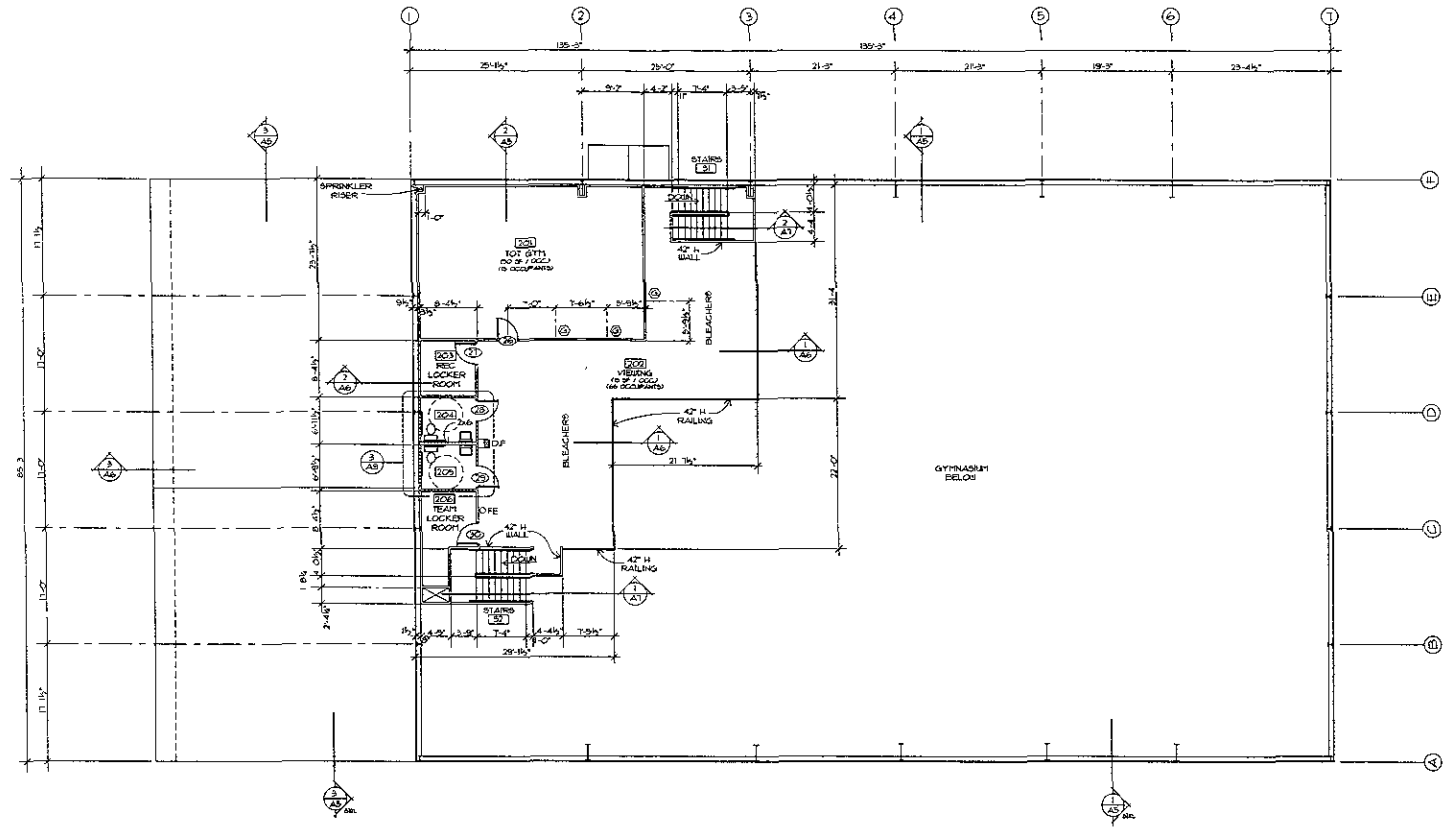
JUST JYMNASTICS
RAPID CITY, SOUTH DAKOTA
FOR:
ALAN & TRACY PONTO

PROJECT NO. 06113
DRAWN BY T.S.
CHECKED BY T.S.
DATE 02-21-07
REVISIONS

A2



TERRY R. STOCKER, LTD
 13311 CENTER RD. - RAPID CITY, SD 57702-7332 (605) 341-4825



MEZZANINE PLAN
 1/8" = 1'-0" 2,416 SF

FE INDICATES LOCATION OF WALL MOUNTED FIRE EXTINGUISHER
 [Symbol] INDICATES LOCATION OF INSULATED WALLS

JUST GYMNASTICS
 RAPID CITY, SOUTH DAKOTA
 FOR:
 ALAN & TRACY PONTO

PROJECT NO	0613
DRAWN BY	T.S.
CHECKED BY	T.S.
DATE	02-21-07
REVISIONS	

A3

RECEIVED
 OCT - 1 2009
 Rapid City Growth
 Management Department