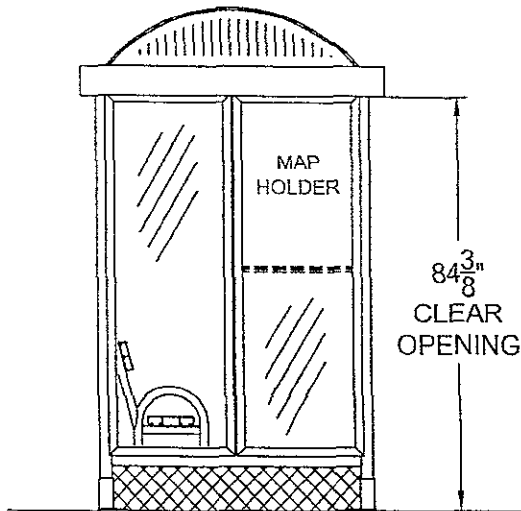
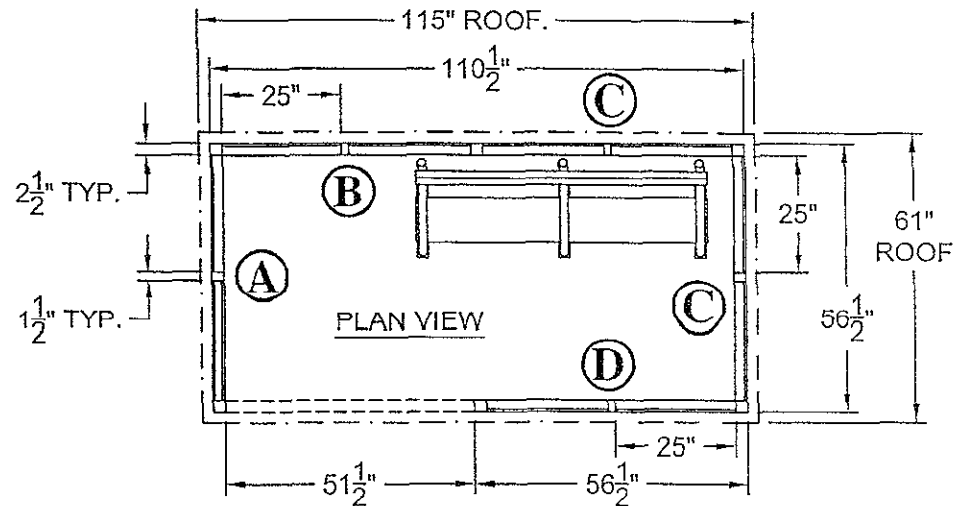
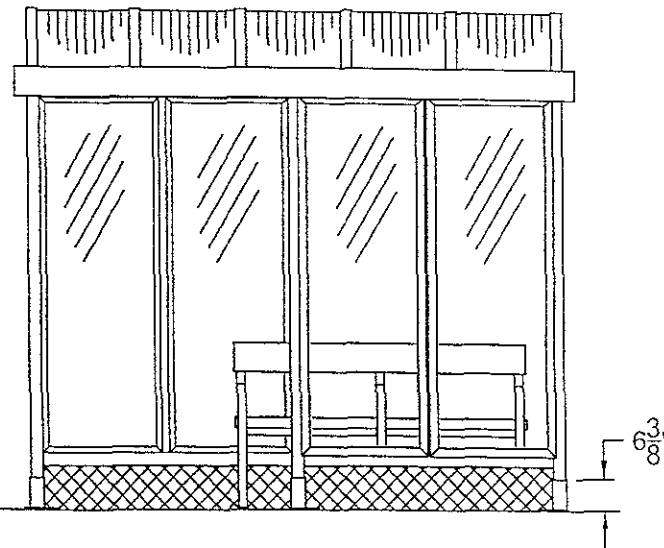


09SR103

SIDE VIEW



FRONT VIEW



NOTES:

- GLAZING IS 1/4" BRONZE MAR RESISTANT POLYCARBONATE
- ROOF IS BARREL VAULT W/ BRONZE 6mm PCSS GLAZING
- ALUMINUM FINISH IS DARK BRONZE ANODIZED

QUANTITY (15) SHELTERS THUS

RECEIVED

OCT 15 2009

Rapid City Growth
Management Department



Tel (734) 207-9700 Fax (734) 207-7995
www.duo-gard.com

THIS DRAWING IS PROPRIETARY AND FOR THE SOLE USE OF OUR CUSTOMER AND MAY NOT BE COPIED OR REPRODUCED WITHOUT PRIOR WRITTEN CONSENT FROM DUO-GARD INDUSTRIES, INC. LEAD TIME BEGINS UPON RECEIPT OF SIGNED SHOP DRAWINGS

APPROVAL SIGNATURE DATE

X _____

PROJECT NAME

RAPID CITY

DESCRIPTION

5' x 10' TRANSIT STYLE SHELTER WITH BARREL VAULT ROOF

SAP#

9164

DG JOB #

7631-45

PRJT ENG

BDH

PRJT MGR

SJ

DRW'G DATE

7/1/09

REV1

REV2

SCALE

PAGE

1

OF

2

DRWNG #

7631-1