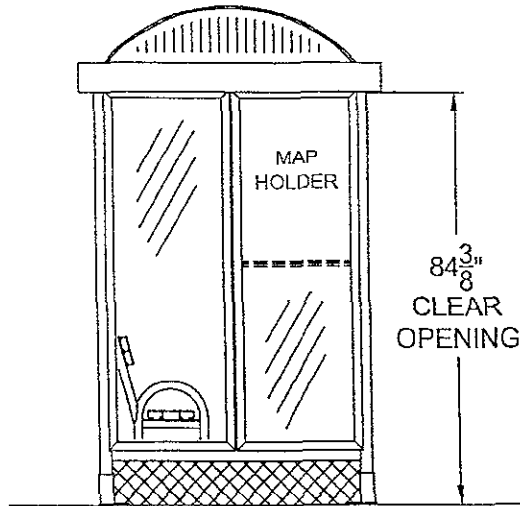
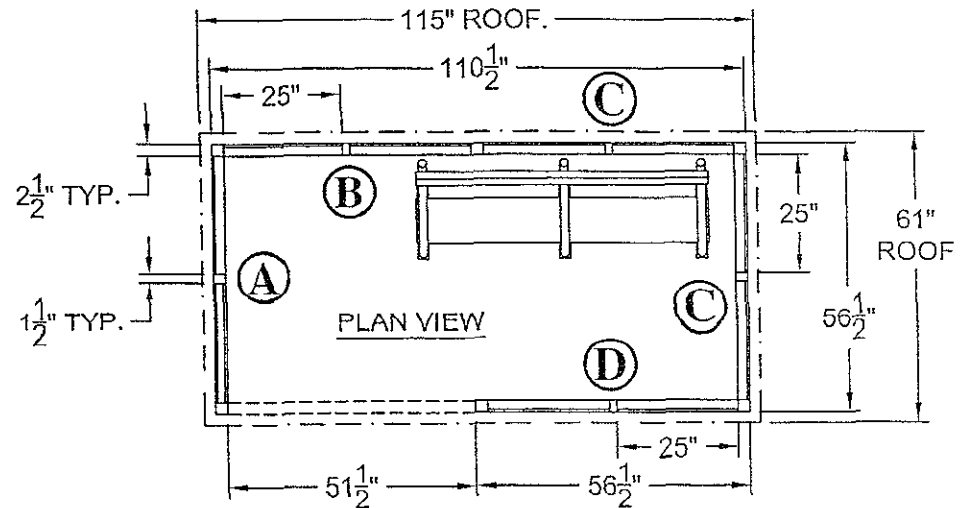
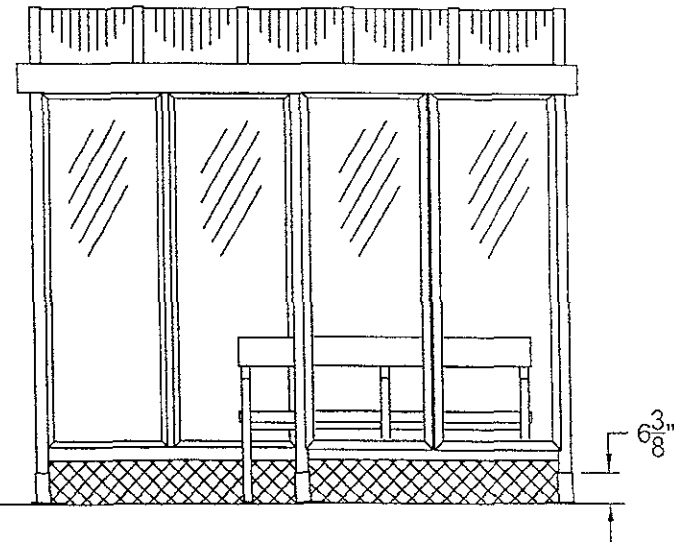


09SR101

SIDE VIEW



FRONT VIEW



Rapid City Growth
 Management Department

OCT 13 2009

RECEIVED

- NOTES:**
- GLAZING IS 1/4" BRONZE MAR RESISTANT POLYCARBONATE
 - ROOF IS BARREL VAULT W/ BRONZE 6mm PCSS GLAZING
 - ALUMINUM FINISH IS DARK BRONZE ANODIZED

QUANTITY (15) SHELTERS THUS



THIS DRAWING IS PROPRIETARY AND FOR THE SOLE USE OF OUR CUSTOMER AND MAY NOT BE COPIED OR REPRODUCED WITHOUT PRIOR WRITTEN CONSENT FROM DUO-GARD INDUSTRIES, INC. LEAD TIME BEGINS UPON RECEIPT OF SIGNED SHOP DRAWINGS.

PROJECT NAME

RAPID CITY

DESCRIPTION

5' x 10' TRANSIT STYLE SHELTER WITH BARREL VAULT ROOF

SAP#

9164

DG JOB #

7631-45

APPROVAL SIGNATURE

DATE

X

PRJTG ENG

BDH

PRJTG MGR

SJ

DRWG DATE

7/1/09

REV1

REV2

SCALE

PAGE

1

OF

2

DRWG #

7631-1