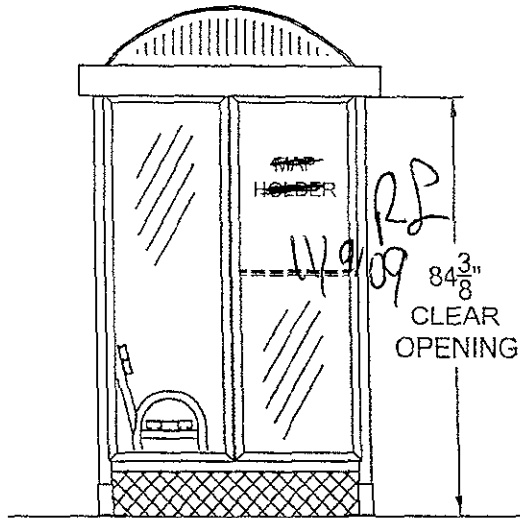
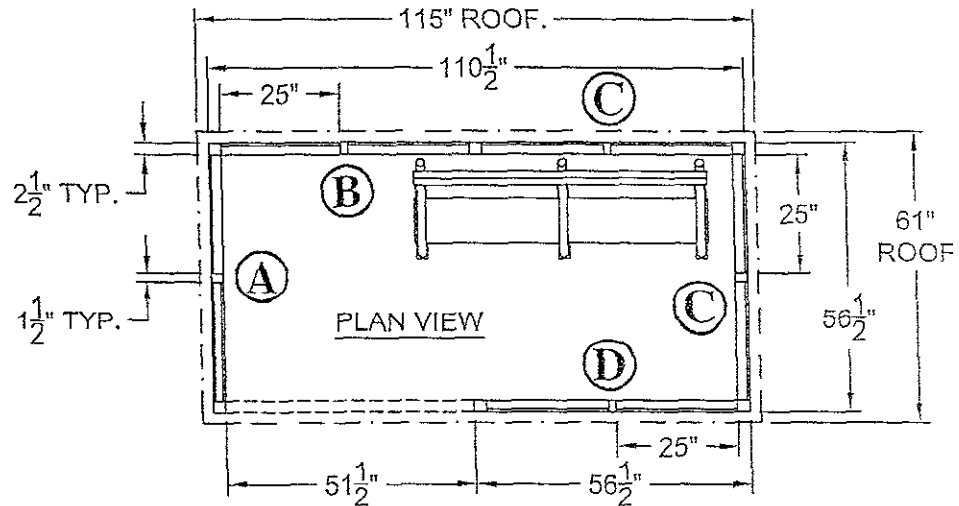
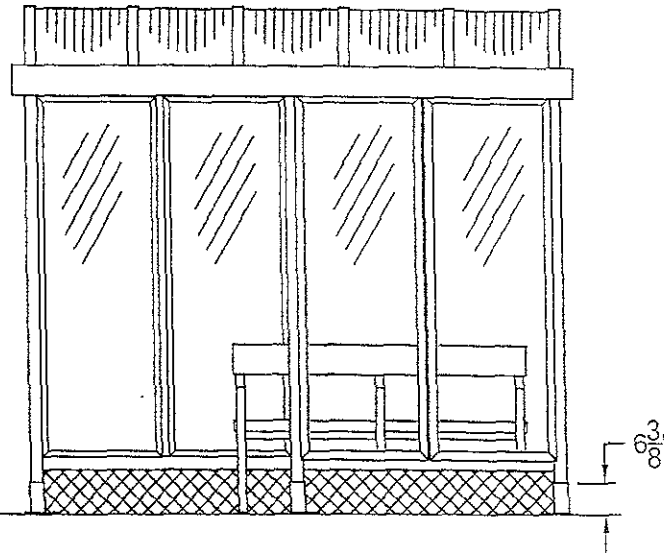


SIDE VIEW



FRONT VIEW



NOTES:

- GLAZING IS 1/4" BRONZE MAR RESISTANT POLYCARBONATE
- ROOF IS BARREL VAULT W/ BRONZE 6mm PCSS GLAZING
- ALUMINUM FINISH IS DARK BRONZE ANODIZED

QUANTITY (15) SHELTERS THUS

RECEIVED

OCT 15 2009

Rapid City Growth

Tel (734) 207-9700 Fax (734) 207-7995
www.duo-gard.com

THIS DRAWING IS PROPRIETARY AND FOR THE SOLE USE OF OUR CUSTOMER AND MAY NOT BE COPIED OR REPRODUCED WITHOUT PRIOR WRITTEN CONSENT FROM DUO-GARD INDUSTRIES, INC. LEAD TIME BEGINS UPON RECEIPT OF SIGNED SHOP DRAWINGS

APPROVAL SIGNATURE _____ DATE _____

PROJECT NAME RAPID CITY				SAP# 9164	CG JOB# 7631-45
DESCRIPTION 5' x 10' TRANSIT STYLE SHELTER WITH BARREL VAULT ROOF					
PRJT ENG BDH	PRJT MGR SJ	DRW G DATE 7/1/09	REV1	REV2	SCALE
PAGE 1	CF 2	DRWING # 7631-1			