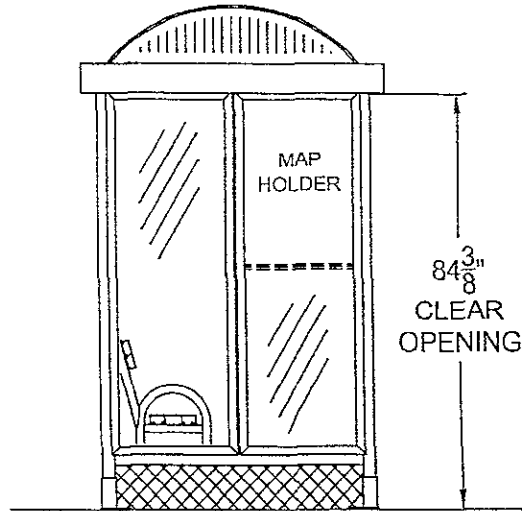
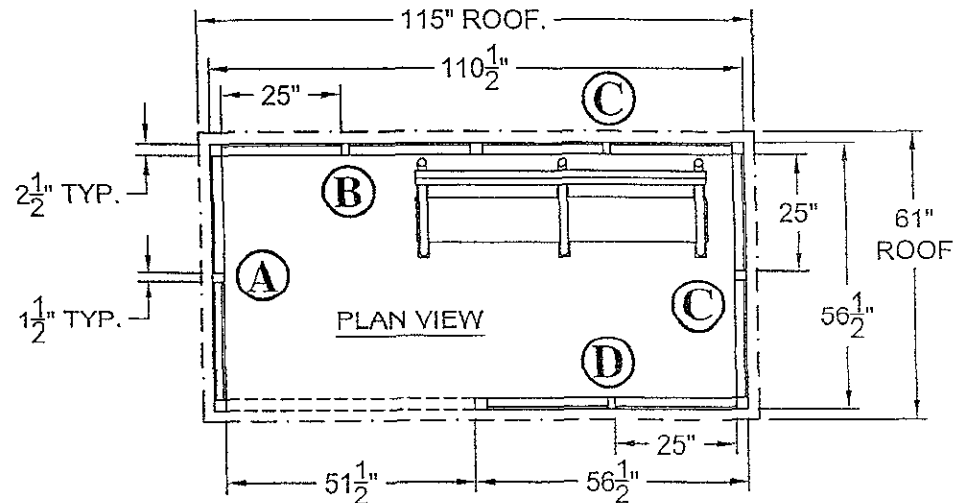
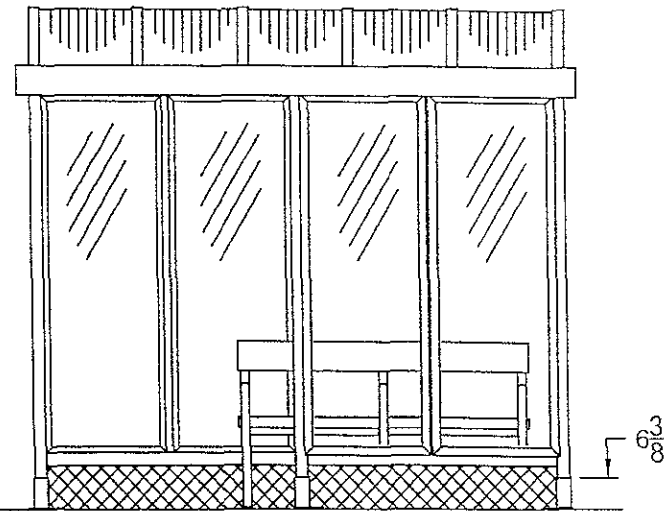


SIDE VIEW



FRONT VIEW



RECEIVED

OCT 15 2009

David City Growth

NOTES:

- GLAZING IS 1/4" BRONZE MAR RESISTANT POLYCARBONATE
- ROOF IS BARREL VAULT W/ BRONZE 6mm PCSS GLAZING
- ALUMINUM FINISH IS DARK BRONZE ANODIZED

QUANTITY (15) SHELTERS THUS



THIS DRAWING IS PROPRIETARY AND FOR THE SOLE USE OF OUR CUSTOMER AND MAY NOT BE COPIED OR REPRODUCED WITHOUT PRIOR WRITTEN CONSENT FROM DUO-GARD INDUSTRIES, INC
LEAD TIME BEGINS UPON RECEIPT OF SIGNED SHOP DRAWINGS

APPROVAL SIGNATURE DATE

PROJECT NAME		SAP#	DG JOB #
RAPID CITY		9164	7631-45

DESCRIPTION
5' x 10' TRANSIT STYLE SHELTER WITH BARREL VAULT ROOF

PRJT ENG	PRJT MGR	DRW G DATE	REV1	REV2	SCALE	PAGE	OF	DRWNG #
BDH	SJ	7/1/09				1	2	7631-1