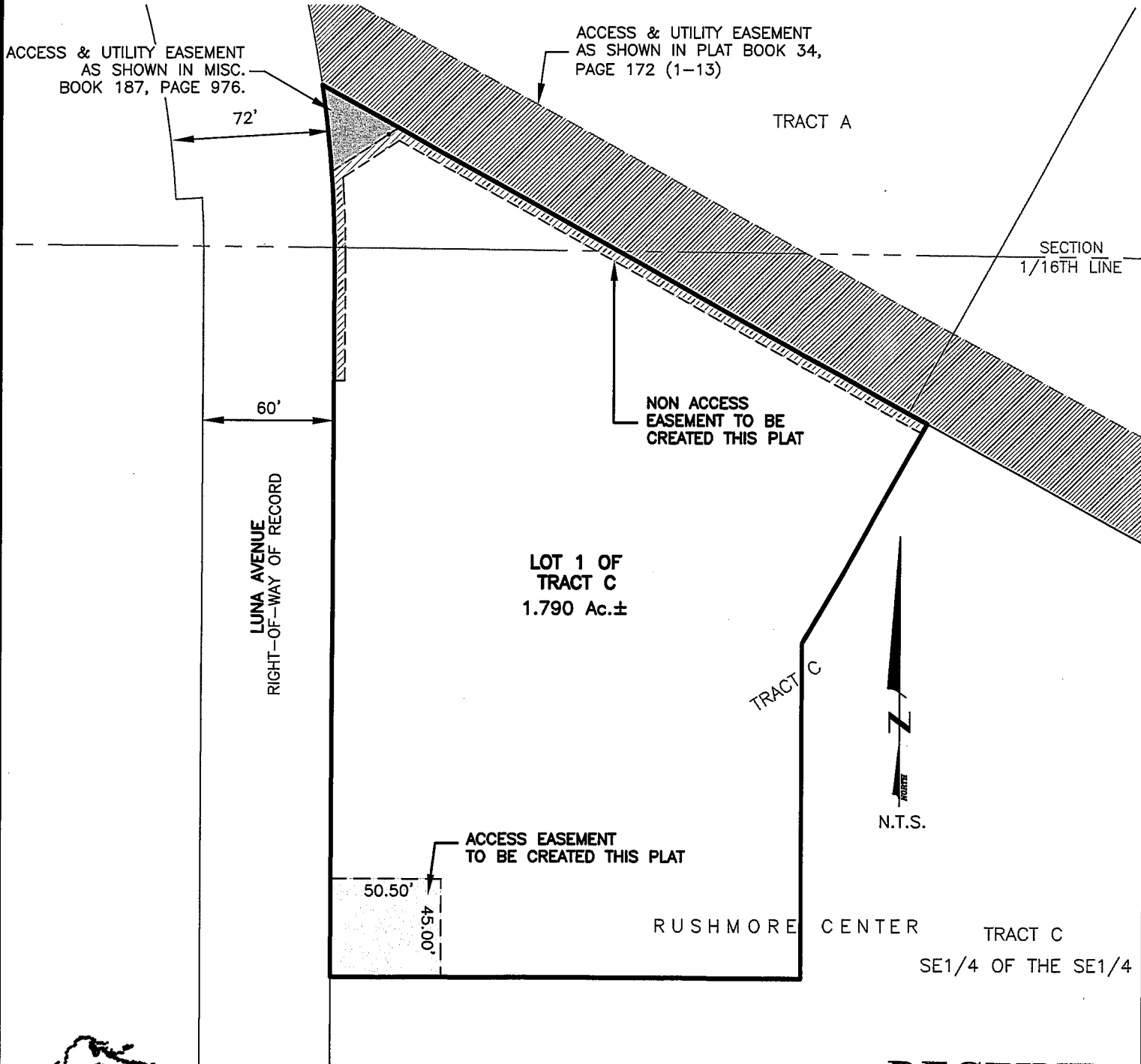


# PLAT OF LOT 1 OF TRACT C RUSHMORE CENTER

(formerly a portion of Tract C of Rushmore Center)  
LOCATED IN THE E1/2 OF THE SE1/4 OF  
SECTION 30, T2N, R8E, BHM  
RAPID CITY, PENNINGTON COUNTY, SOUTH DAKOTA



CITY HALL 1903

## Renner & Associates, LLC.

616 Sixth St. \* Rapid City, SD 57701 \* 605/721-7310  
FAX: 605/721-7313 \* E-MAIL: Gary@RennerAssoc.com  
\* Spearfish 605/717-0016 \*

# RECEIVED

NOV 12 2009

Rapid City Growth  
Management Department