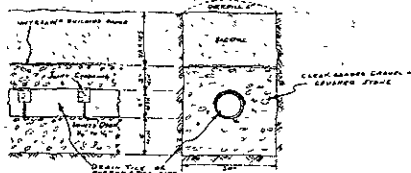


OCT 16 2009

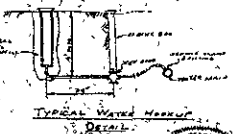
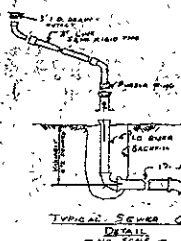
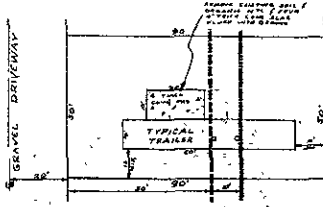
Rapid City Growth Management Department



CROSS SECTION OF DRAIN FIELD
ABSORPTION TRENCH
SCALE 1" = 10'
SECTION AA



- LEGEND
- Sewer Manhole
 - 18" Plastic Manhole
 - Sewer Line (14" to 18" S.D.)
 - Water Line
 - ⊗ 30" Dia. Manhole



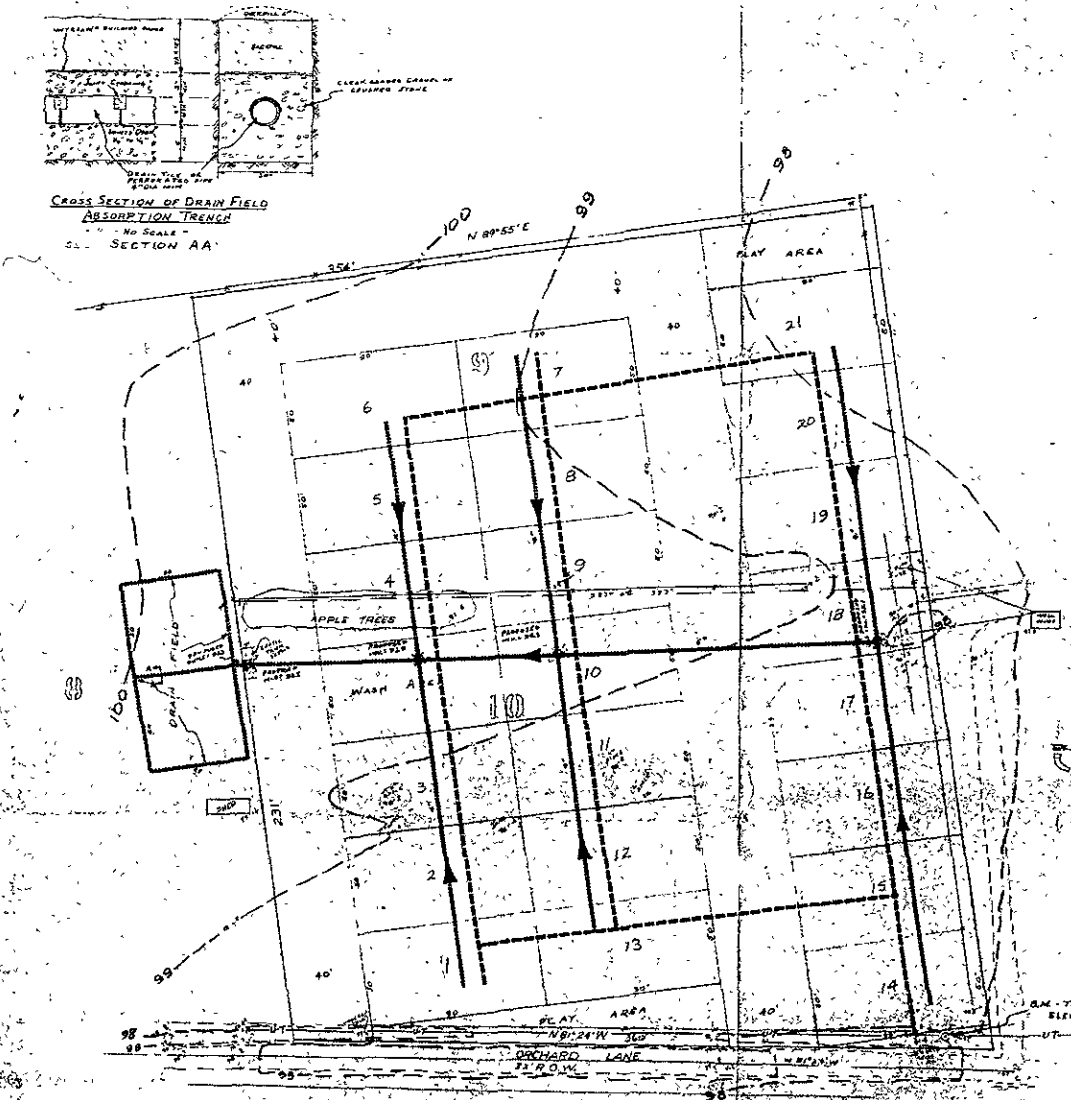
B.M. Tree Hubway
ELEV. = 100.00



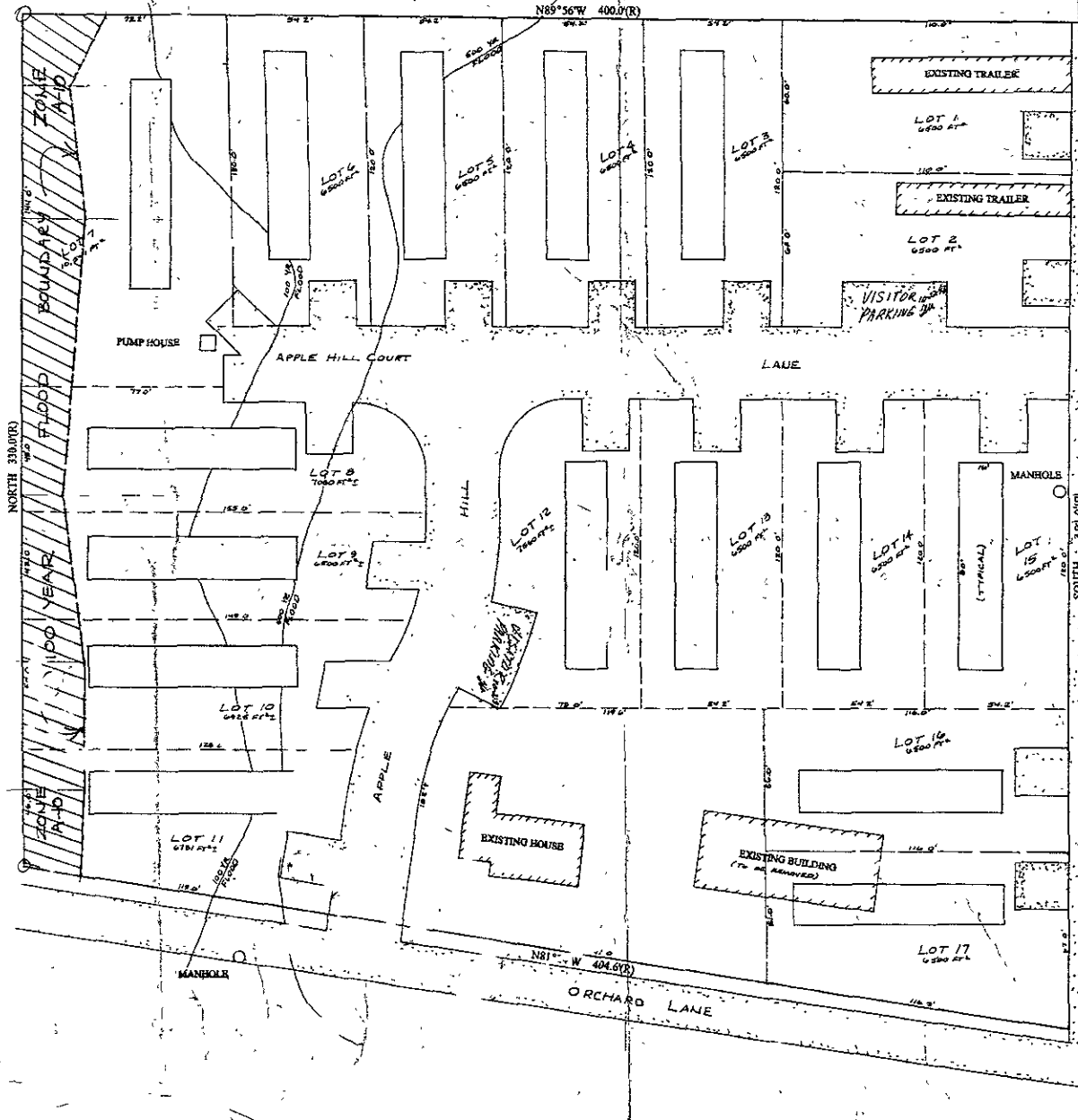
GORDON REIDEL
TRAILER PARK
IN CONNECTION WITH TRAVIS TRACT
LOT 1 OF 10 LOTS OF TRAVIS TRACT
PENNINGTON COUNTY, SOUTH DAKOTA

DATE	NOV 10 2009	PROJECT	TRAVIS TRACT
DRAWN BY	W. J. HARRIS	CHECKED BY	G. REIDEL
CALCULATED BY	W. J. HARRIS	DATE	NOV 10 2009

ERIKSON LEADOR GELLMAN INC.
ENGINEERS ARCHITECTS AND PLANNERS
RAPID CITY, SOUTH DAKOTA



S. Valley Drive



EXISTING TRAILER PARK

RECEIVED

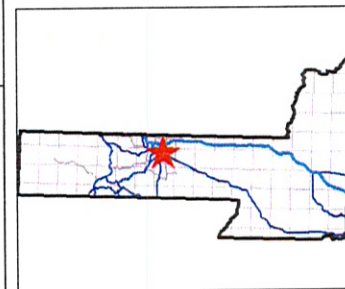
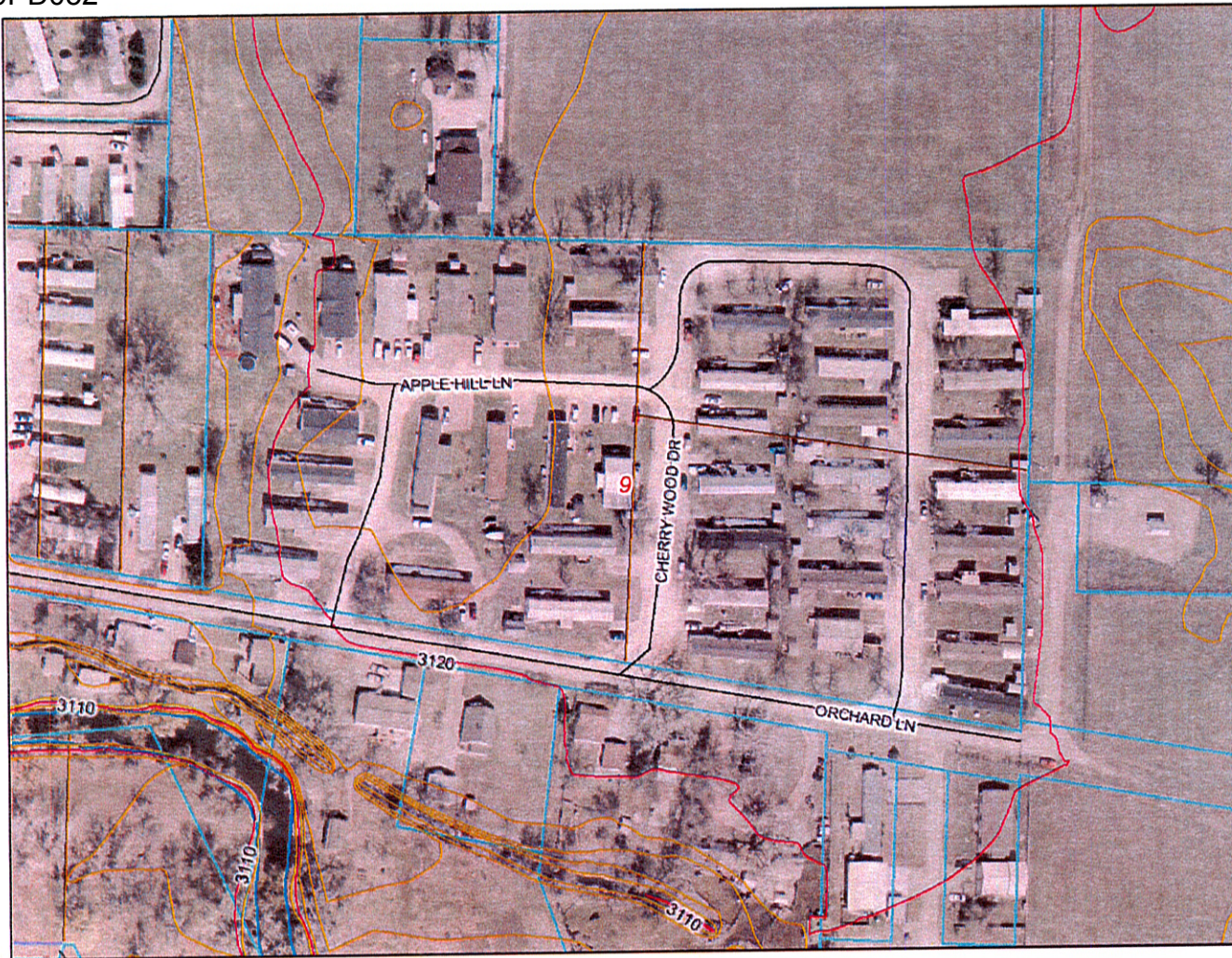
OCT 16 2009

Rapid City Growth
Management Department

PROPOSED TRAILER PARK ADDITION
LOT 8 OF LOT 1 OF FRAVEL TRACT
LOCATED IN NW1/4-SW1/4 OF SECTION 9, T1N, R8E, B1M,
RAPID CITY, PENNINGTON COUNTY, SOUTH DAKOTA

PREPARED BY:
POLENZ LAND SURVEYING
5411 MEADOWBROOK DRIVES
RAPID CITY, SD 57112
605-342-6153

09PD052



Legend

- Sewer Forced Mains
- Roads**
- Not classified
- Interstate
- US Highway
- SD Highway
- County Highway
- Main Road
- Minor Arterial
- Collector
- Ramp
- Paved Road
- Unpaved Road
- Unimproved Road
- Trail
- other
- Not yet coded
- City Contour Lines**
- INDEX
- INTERMEDIATE
- Township/Section lines**
- SECTION
- TOWNSHIP
- Parcel Boundary
- Lot Lines**
- COUNTY
- LOT LINE
- PARCEL LINE
- ROAD ROW
- RR ROW
- SECTION
- TOWNSHIP
- WATER LINE
- PLSS Sections**



Map center: 44° 3' 34.5" N, 103° 10' 4.5" W



Scale: 1:1,851

DISCLAIMER: This map is provided 'as is' without warranty of any representation of accuracy, timeliness, or completeness. The burden for determining accuracy, completeness, timeliness, merchantability, and fitness for or the appropriateness for use rests solely on the user. Rapid City and Pennington County make no warranties, express or implied, as to the use of the map. There are no implied warranties of merchantability or fitness for a particular purpose. The user acknowledges and accepts the limitations of the map, including the fact that the data used to create the map is dynamic and is in a constant state of maintenance, correction, and update. This document does not represent a legal survey of the land. There are no restrictions on the distribution of printed Rapid City/Pennington County maps, other than the City of Rapid City copyright/credit notice must be legible on the print. The user agrees to recognize and honor in perpetuity the copyrights and other proprietary claims for the map(s) established or produced by the City of Rapid City or the vendors furnishing said items to the City of Rapid City.