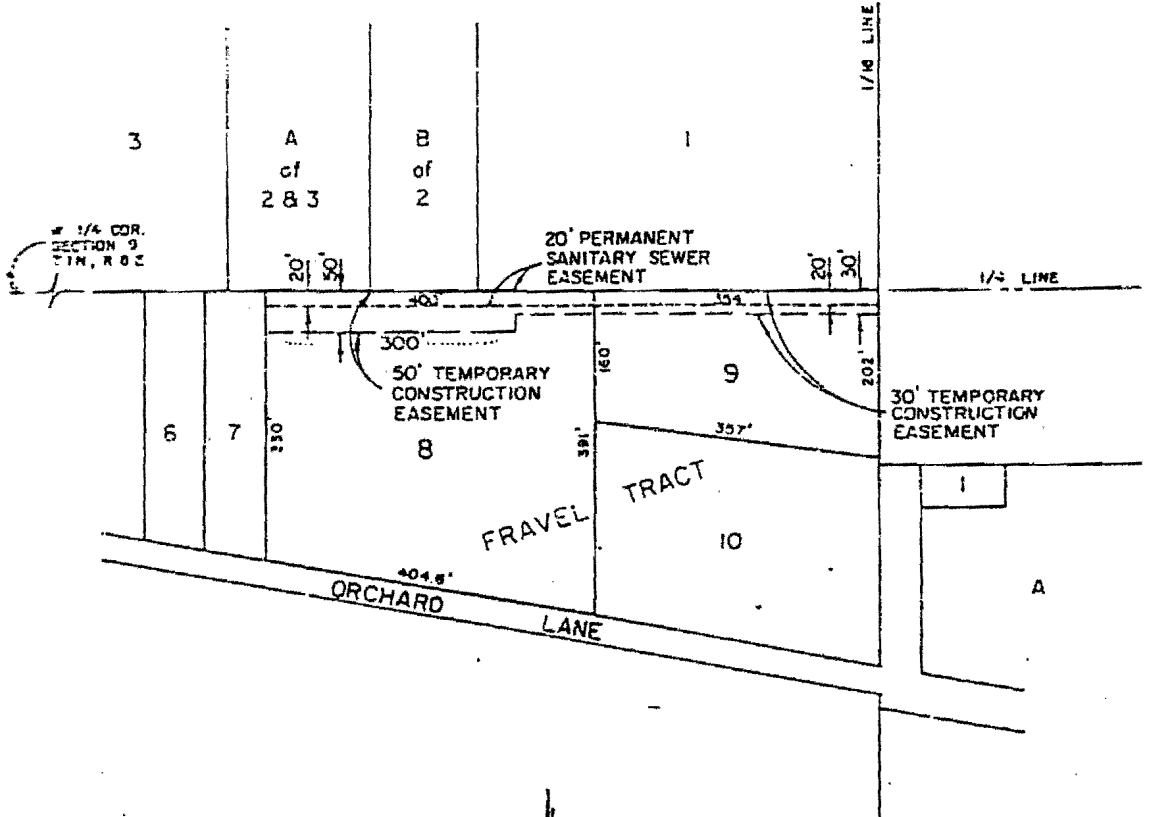


RECEIVED

NOV - 9 2009

Platt City Growth
Management Department



1" = 200'

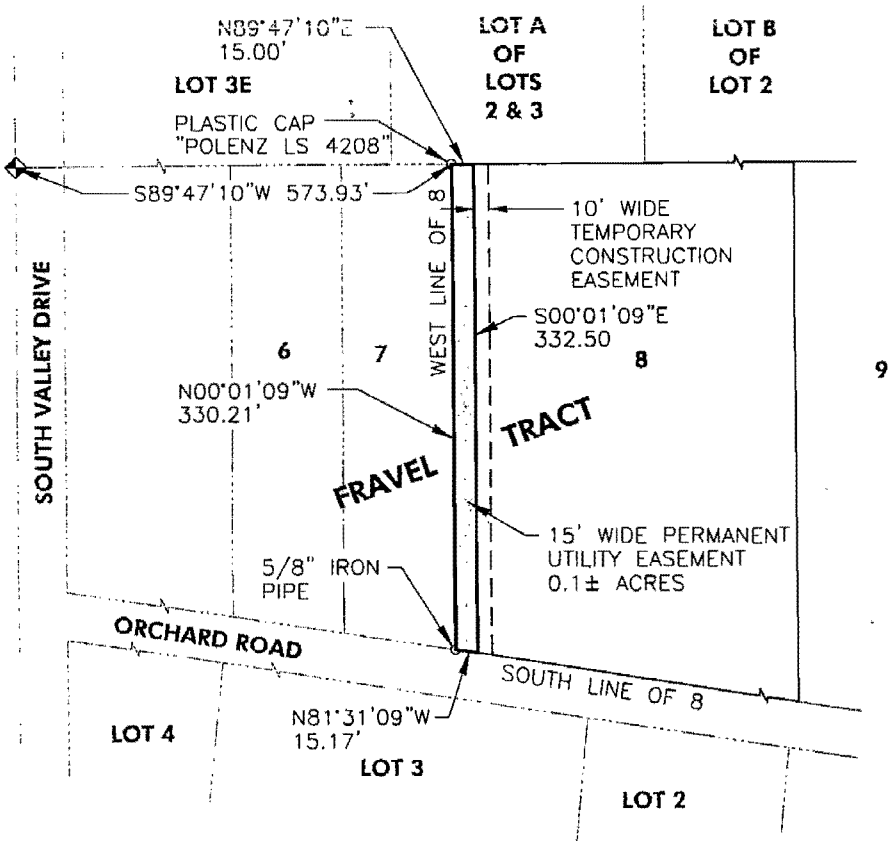
RECORDED
INDEXED

± 472
 STATE OF MISSOURI
 COUNTY OF LAMAR
 29 day of
 Jan. 2009 at 1 o'clock
 P.M. recorded in
 Vol. 27, p. 1633. This
 is the original of the
 Register of Deeds

By _____ Deputy
 Jan 5

15' WIDE PERMANENT UTILITY EASEMENT & 10' WIDE TEMPORARY CONSTRUCTION EASEMENT

LOT 8 OF FRAVEL TRACT
LOCATED IN THE NW1/4 OF THE SW1/4 SECTION 9, T1N, R8E, B.H.M.,
PENNINGTON COUNTY, SOUTH DAKOTA
OWNER: TERRA CON L.L.C.



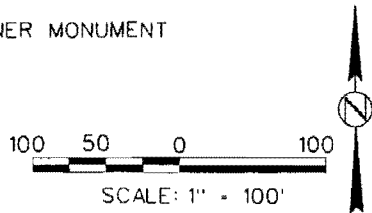
SURVEYOR'S CERTIFICATE:

I, WILLIAM C. PHILLIPS, A REGISTERED LAND SURVEYOR IN THE STATE OF SOUTH DAKOTA, DO HEREBY CERTIFY THAT AT THE DIRECTION OF DONALD SMITH I HAVE PREPARED FROM RECORD DOCUMENTS AND FROM A FIELD SURVEY THE 15' WIDE PERMANENT UTILITY EASEMENT AND 10' WIDE TEMPORARY CONSTRUCTION EASEMENT LOCATION SHOWN HEREON, AND TO THE BEST OF MY KNOWLEDGE AND BELIEF THE DIMENSIONS SHOWN ARE TRUE AND CORRECT.

o - FOUND CORNER MONUMENT



William C. Phillips
WILLIAM C. PHILLIPS



EASEMENT PREPARED BY:
ALLIANCE OF ARCHITECTS AND ENGINEERS
706 WEST BOULEVARD
RAPID CITY, SOUTH DAKOTA

DRAWN BY R. DEIBERT DATE 08-26-05
CHECKED BY W.C. PHILLIPS DATE 08-26-05

FILE: 1162EASEMENT02.dwg