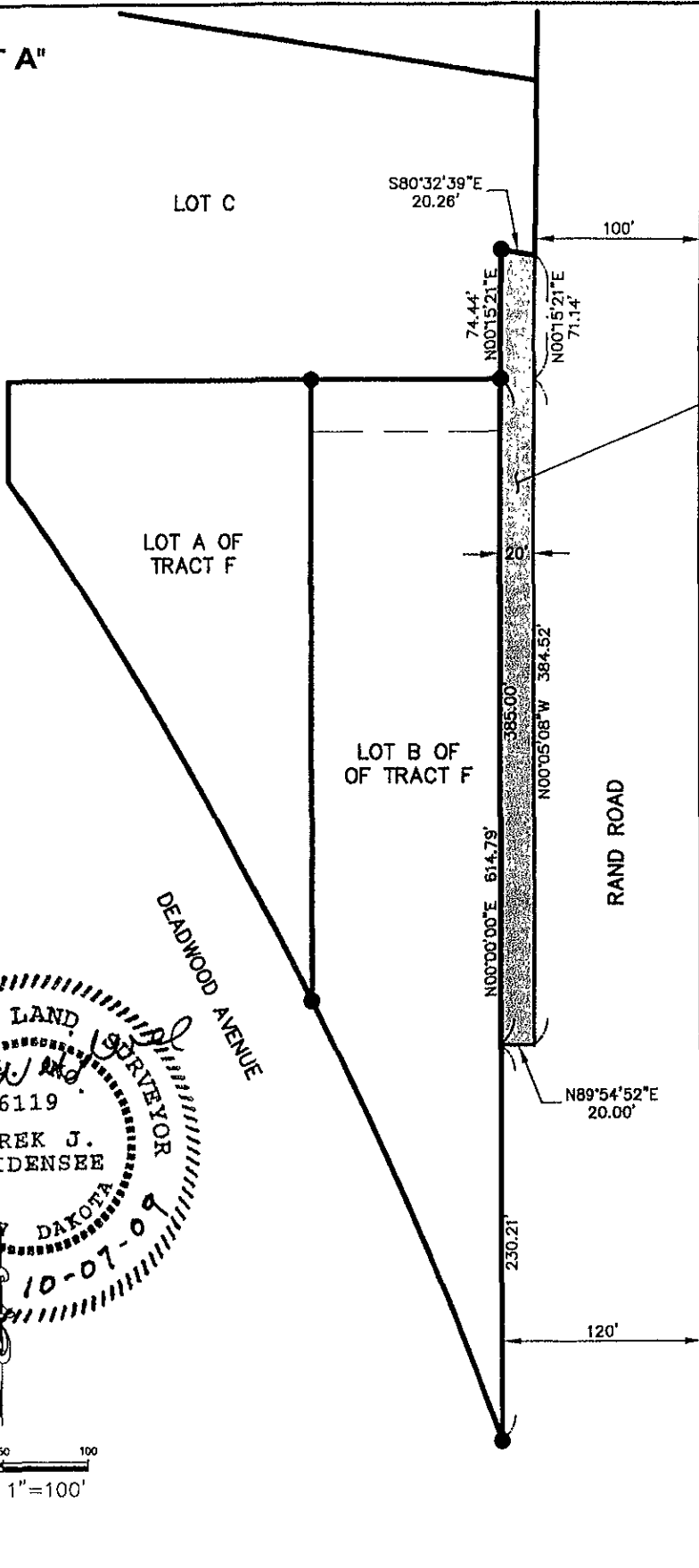
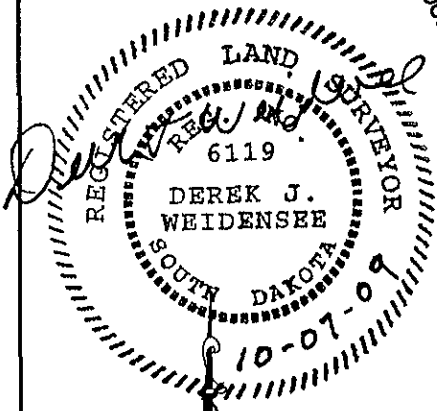


"EXHIBIT A"



RAND ROAD RIGHT OF WAY TO BE VACATED WITH THIS DOCUMENT, VACATED RIGHT OF WAY TO REMAIN AS PRIVATE AND PUBLIC UTILITY EASEMENT

LOT A OF NW1/4 NE1/4 LESS LOTS H1 & H2



SCALE: 1"=100'

RIGHT OF WAY VACATION
PORTION OF RAND ROAD LOCATED IN
 NE1/4 NW1/4 OF SECTION 34, T2N, R7E, BHM
 PENNINGTON COUNTY, RAPID CITY, SOUTH DAKOTA

OCTOBER 7, 2009

Surveyed By: MM/AP
 Date: MARCH 2008
 Drawn By: KJS
 Checked By: DW
 Location:
NE1/4 NW1/4 SEC. 34,
T2N, R7E, BHM



F M G, Inc.

3700 Sturgis Road
 Rapid City, SD 57702-0317
 (605) 342-4105 FAX (605) 342-4222
 www.fmgengineering.com