



Alley (South) Face of 725 St. Joseph St.

Street (North) Face of 725 St. Joseph St.



Front face exterior construction is red brick. Alley and side faces are brick covered with tan/beige stucco. Window trim is dark red/wine/maroon color. Height of each side of the building is 2 stories or 30'. Dimensions of front & back = 25'W x 30'H. Dimensions of east & west = 129'W x 30'H.

Roof top design: Flat, sloping to the rear

Membrane color: White

RECEIVED





East Face of Building = 129' W x 30' H



West Face of Building = 129'W x 30' H



Additional Building Images

RECEIVED

OCT - 2009

City of Chicago



Ifrit's Signage Facing East



Ifrit's Signage Facing West



Wide Pan Shot



Straight On Shot

These are 4 pictures of the same sign – there is only one sign and it is on the front side of the building. The sign mount is 14' from the sidewalk. The mount extends 5' out from the building. The mount and sign are both constructed of steel. The dimensions of the sign are as follows: 2'8" W x 2' H x 2.5" D

RECEIVED

OCT - 9 2009

Rapid City Growth





Front Couch Area



Picture from Front to Back



Round Tables by Bar



Booth & Table Seating



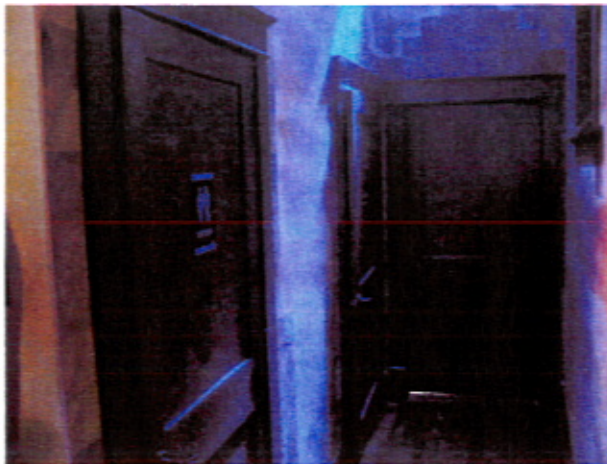
Picture of Bar



Back Couch Area

RECEIVED

OCT - 2000



Bathroom and Back Room Doors



Back Room – Storage Space



Shot of Back Room through Double Doors



End of Lounge Area to Back Door