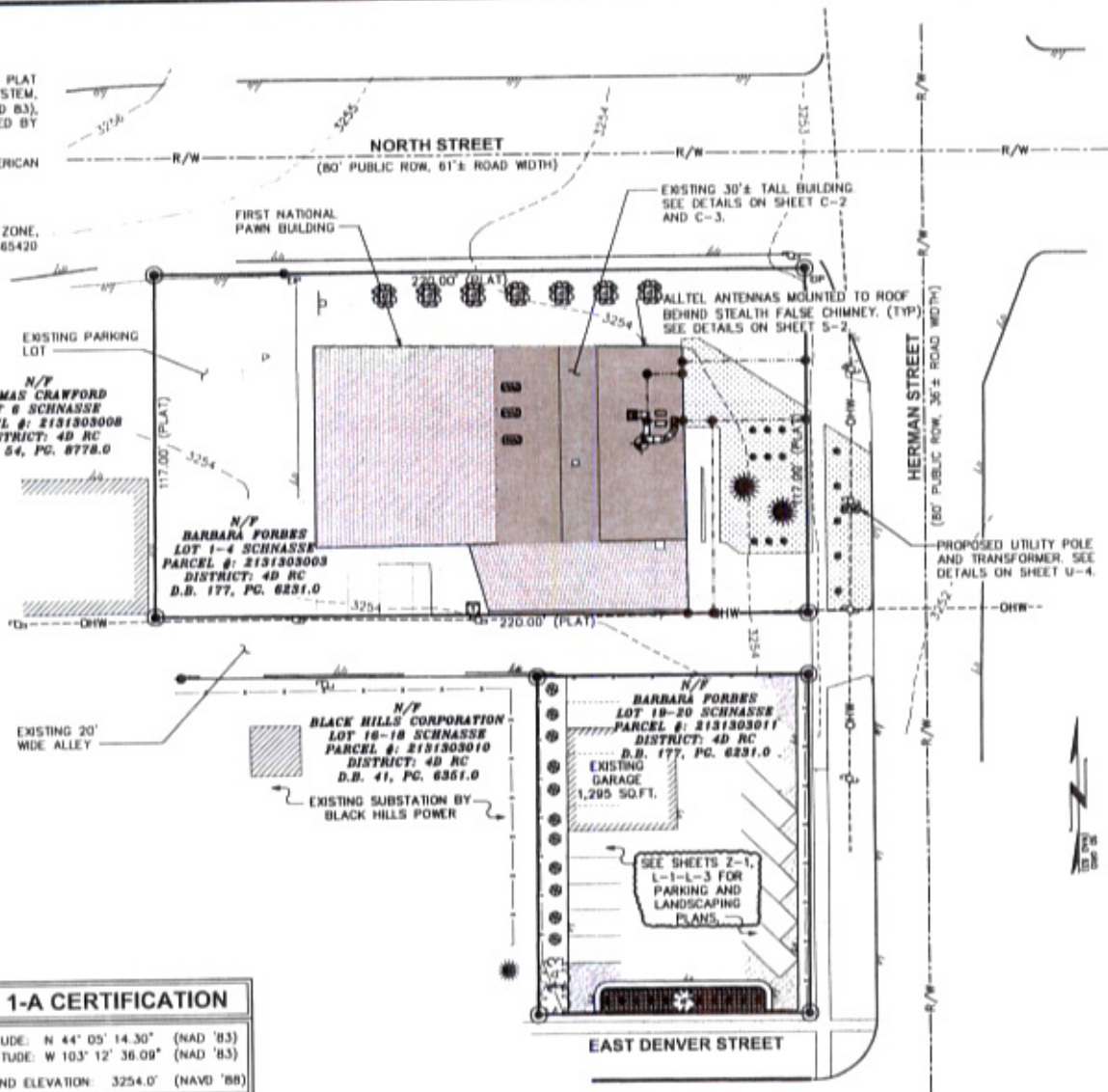


NOTES:

09SR089

1. THE BASIS OF THE MERIDIANS AND COORDINATES FOR THIS PLAT IS THE SOUTH DAKOTA STATE PLANE COORDINATE SYSTEM, SOUTH ZONE, NORTH AMERICAN DATUM 1983 (SDSPCS RAD 83), BASED ON DIFFERENTIAL GPS OBSERVATIONS PERFORMED BY HUSKER SURVEYING LLC.
2. VERTICAL INFORMATION SHOWN, BASED ON THE NORTH AMERICAN VERTICAL DATUM OF NAVD 1988 IN FEET.
3. ALL DISTANCES ARE GROUND UNLESS OTHERWISE NOTED.
4. THE EXISTING BUILDING IS NOT LOCATED IN A FLOOD ZONE, "ZONE X", AS DETERMINED BY FEMA FLOOD RATE MAP NO. 465420 0008 F, EFFECTIVE DATE FEBRUARY 16, 1996.

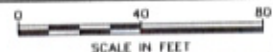


LEGEND

- EXIST. PROPERTY LINE
- ⊕ EXIST. UTILITY POLE
- ⊥ EXIST. BILLBOARD
- ⊞ EXIST. HVAC UNITS
- ⊠ EXIST. TELCO PEDESTAL
- ⊙ PROPERTY CORNER
- ⊕ EXISTING IRON PIN
- ⊕ 1-A CERTIFICATION LOCATION
- 200 --- EXIST. CONTOUR LINE
- /—/— EDGE OF PAVEMENT
- OHW--- OVERHEAD WIRE
- R/W--- RIGHT-OF-WAY
- X— CHAIN LINK FENCE

1-A CERTIFICATION

LATITUDE: N 44° 05' 14.30" (NAD '83)
 LONGITUDE: W 103° 12' 36.09" (NAD '83)
 GROUND ELEVATION: 3254.0' (NAVD '88)



PLANS PREPARED FOR:

alltel

2449 West Chicago St.
 Rapid City, SD 57702
 Office: (605)-342-8572

PROJECT INFORMATION:

**SDRC
 MAPLE AVENUE**

115 E. NORTH ST.
 RAPID CITY, SD 57701
 (PENNINGTON COUNTY)

PLANS PREPARED BY:

TOWER ENGINEERING PROFESSIONALS
 3703 JUNCTION BOULEVARD
 RALEIGH, NC 27603-5263
 OFFICE: (919) 661-6351
 FAX: (919) 661-6350

SEAL:

11	09-22-09	REVISED CONSTRUCTION
10	06-25-09	REVISED CONSTRUCTION
9	07-14-09	REVISED CONSTRUCTION
6	07-07-09	REVISED CONSTRUCTION
7	02-17-09	REVISED CONSTRUCTION
REV	DATE	ISSUED FOR:

DRAWN BY: NAC CHECKED BY: GWA

SHEET TITLE:

SITE PLAN

SHEET NUMBER: **C-1**

REVISION: **11**

TEP #: 072106

SITE PLAN
 SCALE: 1" = 40'