

PARKING DIMENSIONS

PARKING ANGLE	STALL LENGTH	STALL WIDTH	AIISLE WIDTH (1-WAY)	AIISLE WIDTH (2-WAY)
90'	18'	9'	26'	26'
60'	18'	9'	18'	20'
45'	18'	9'	12'	20'
30'	18'	9'	10'	20'
0'	22'	9'	10'	20'

* RAPID CITY MUNICIPAL CODE - TABLE 17.50.270F.2

PARKING REGULATION NOTES:

- CURRENT PARKING SPACES AVAILABLE:
 - 24 - PARKING SPACES
 - 1 - HANDICAPPED ACCESSIBLE SPACES
- SQUARE FOOTAGE OF THE EXISTING BUILDING:
 - 14,758 SQ.FT. - TOTAL SQUARE FOOTAGE
 - 4,173 SQ.FT. - RETAIL PAWNSHOP OPERATION SQUARE FOOTAGE
 - 9,290 SQ.FT. - STORAGE SQUARE FOOTAGE (INCLUDES 2nd FLOOR)
 - 1,295 SQ.FT. - WAREHOUSE/GARAGE
- PARKING SPACES REQUIRED:
 - (TABLE 17.50.270 (D))
 - 4 SPACES x 4,173 SQ.FT./1000 = 16.7 SPACES (RETAIL PAWNSHOP)
 - 25 SPACES x 9,290 SQ.FT./1000 = 2.3 SPACES (WAREHOUSE)
 - 25 SPACES x 1,295 SQ.FT./1000 = 0.3 SPACES (WAREHOUSE)

30 PARKING SPACES TOTAL REQUIRED
 24 CURRENT PARKING SPACES
6 ADDITIONAL PARKING SPACES REQUIRED

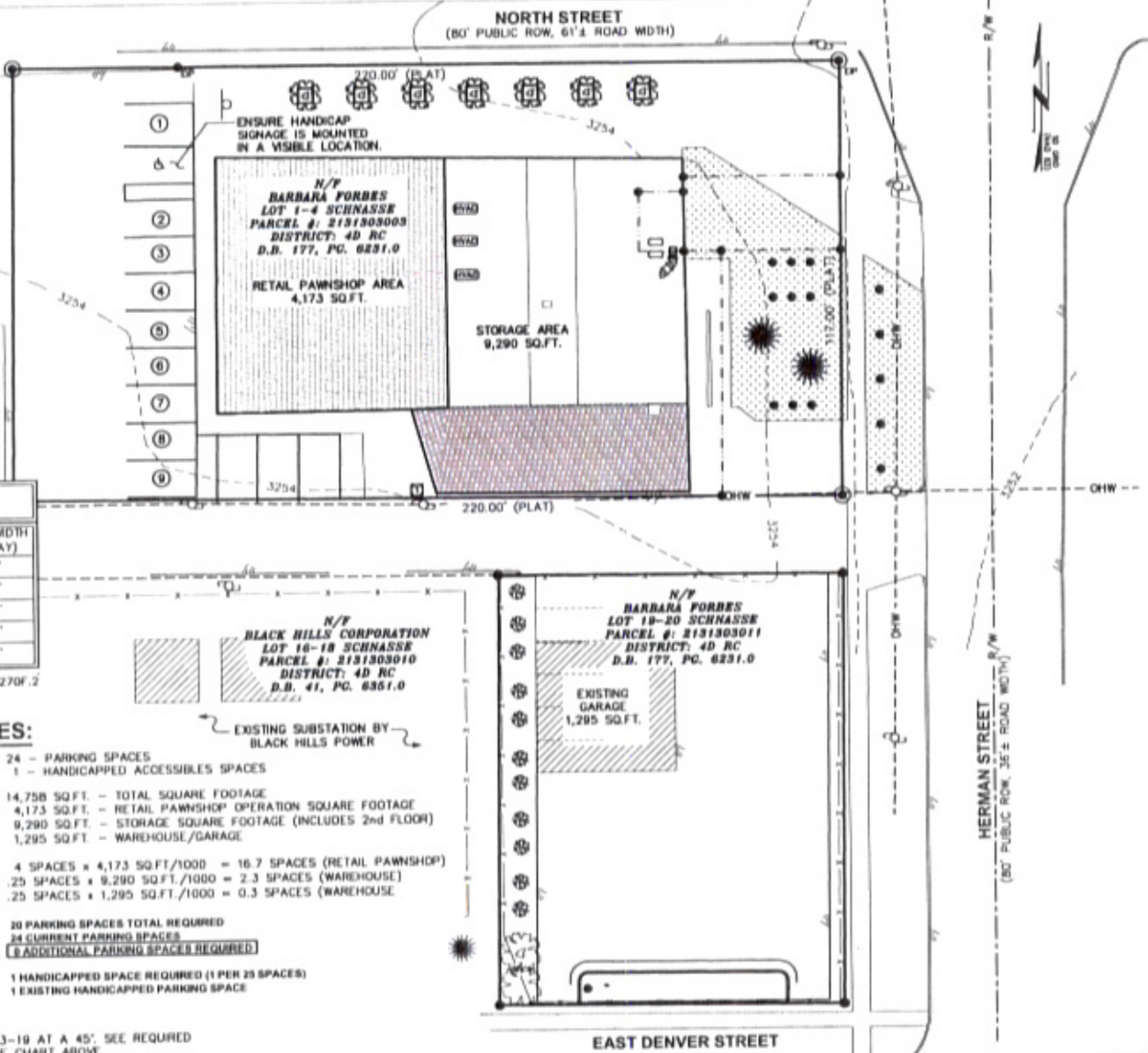
1 HANDICAPPED SPACE REQUIRED (1 PER 25 SPACES)
 1 EXISTING HANDICAPPED PARKING SPACE

CONTRACTOR NOTE:

CONTRACTOR TO PAINT LINES PARKING SPACES 13-19 AT A 45°. SEE REQUIRED MINIMUM OFF-STREET PARKING DIMENSIONS IN THE CHART ABOVE.

PARKING PLAN

SCALE: 1" = 30'



PLANS PREPARED FOR:

2448 West Chicago St.
 Rapid City, SD 57702
 Office: (605)-342-8572

PROJECT INFORMATION:

SDRC MAPLE AVENUE

115 E. NORTH ST.
 RAPID CITY, SD 57701
 (PENNINGTON COUNTY)

PLANS PREPARED BY:

TOWER ENGINEERING PROFESSIONALS
 3703 JUNCTION BOULEVARD
 RALEIGH, NC 27603-5263
 OFFICE: (919) 661-6351
 FAX: (919) 661-6350

SEAL:

REGISTERED PROFESSIONAL ENGINEER
 REG. NO. 9730
 Andrew Holdane
 SOUTH DAKOTA
 September 22, 2009

REV	DATE	ISSUED FOR:
11	09-27-09	REVISED CONSTRUCTION
10	08-25-09	REVISED CONSTRUCTION
9	07-14-09	REVISED CONSTRUCTION
8	07-02-09	REVISED CONSTRUCTION
7	07-17-09	REVISED CONSTRUCTION

DRAWN BY: NMC CHECKED BY: GMA

SHEET TITLE:

PARKING PLAN

SHEET NUMBER:	REVISION:
Z-1	11
	TEP #: 072.106