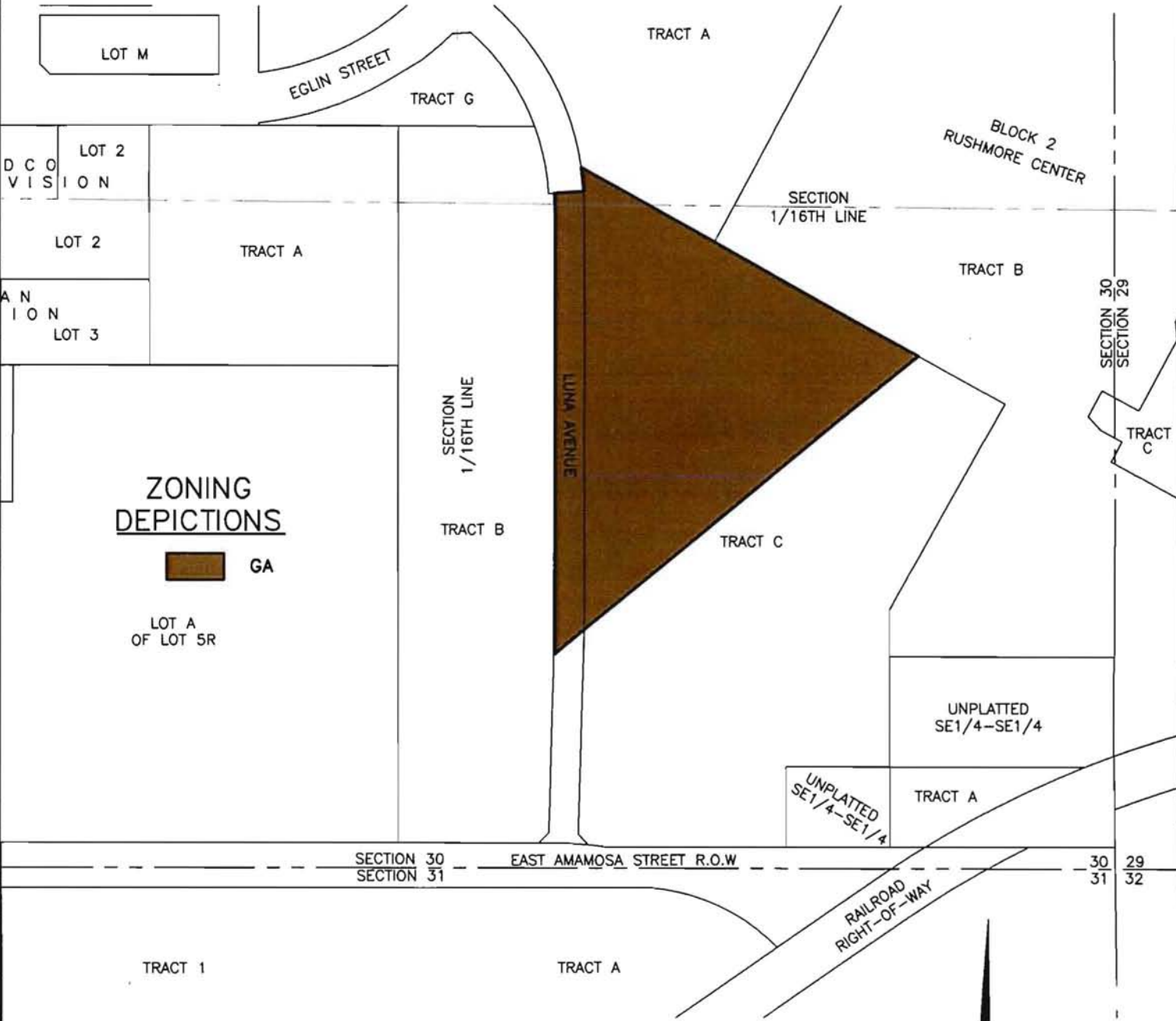


EXISTING ZONING MAP  
**A PORTION OF TRACT C OF RUSHMORE CENTER,  
AND A PORTION OF DEDICATED  
RIGHT-OF-WAY OF LUNA AVENUE**

LOCATED IN THE E1/2 OF THE SE1/4,  
SECTION 30, T2N, R8E, BHM  
RAPID CITY, PENNINGTON COUNTY, SOUTH DAKOTA



**ZONING  
DEPICTIONS**  
[Brown Box] GA

LOT A  
OF LOT 5R

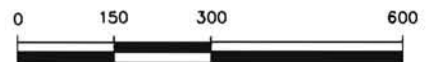


CITY HALL 1903

**RENNER & ASSOCIATES, LLC.**

616 SIXTH ST. \* RAPID CITY, SD 57701  
PHONE: 605/721-7310 FAX: 605/721-7313  
SPEARFISH OFFICE: 605/717-0016

OCTOBER 6, 2009

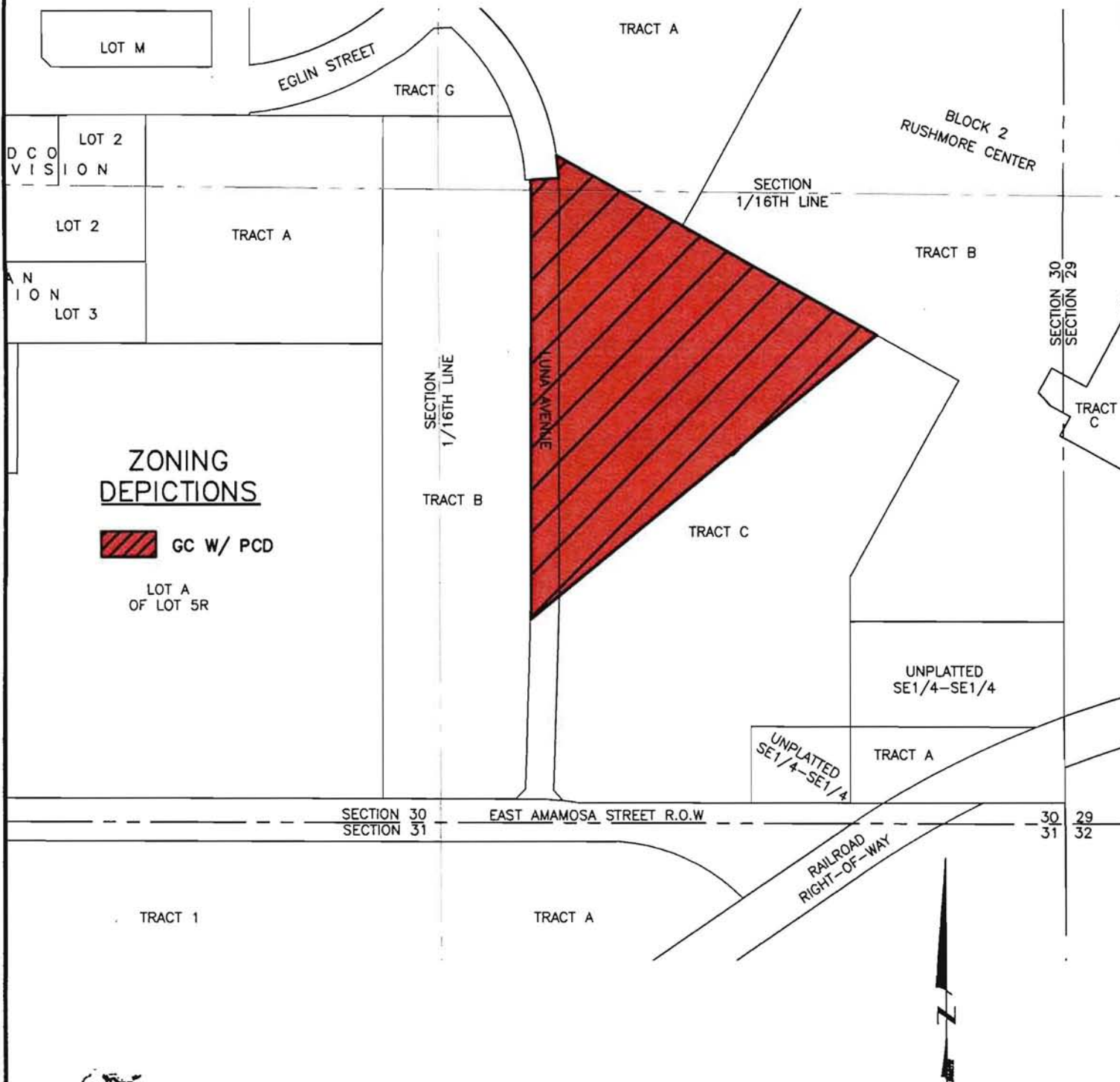


SCALE 1" = 300'



# A PORTION OF TRACT C OF RUSHMORE CENTER, AND A PORTION OF DEDICATED RIGHT-OF-WAY OF LUNA AVENUE

LOCATED IN THE E1/2 OF THE SE1/4,  
SECTION 30, T2N, R8E, BHM  
RAPID CITY, PENNINGTON COUNTY, SOUTH DAKOTA



### ZONING DEPICTIONS

 GC W/ PCD

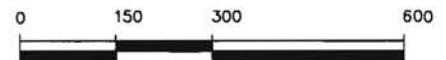
LOT A  
OF LOT 5R



## RENNER & ASSOCIATES, LLC.

616 SIXTH ST. \* RAPID CITY, SD 57701  
PHONE: 605/721-7310 FAX: 605/721-7313  
SPEARFISH OFFICE: 605/717-0016

OCTOBER 6, 2009



SCALE 1" = 300'