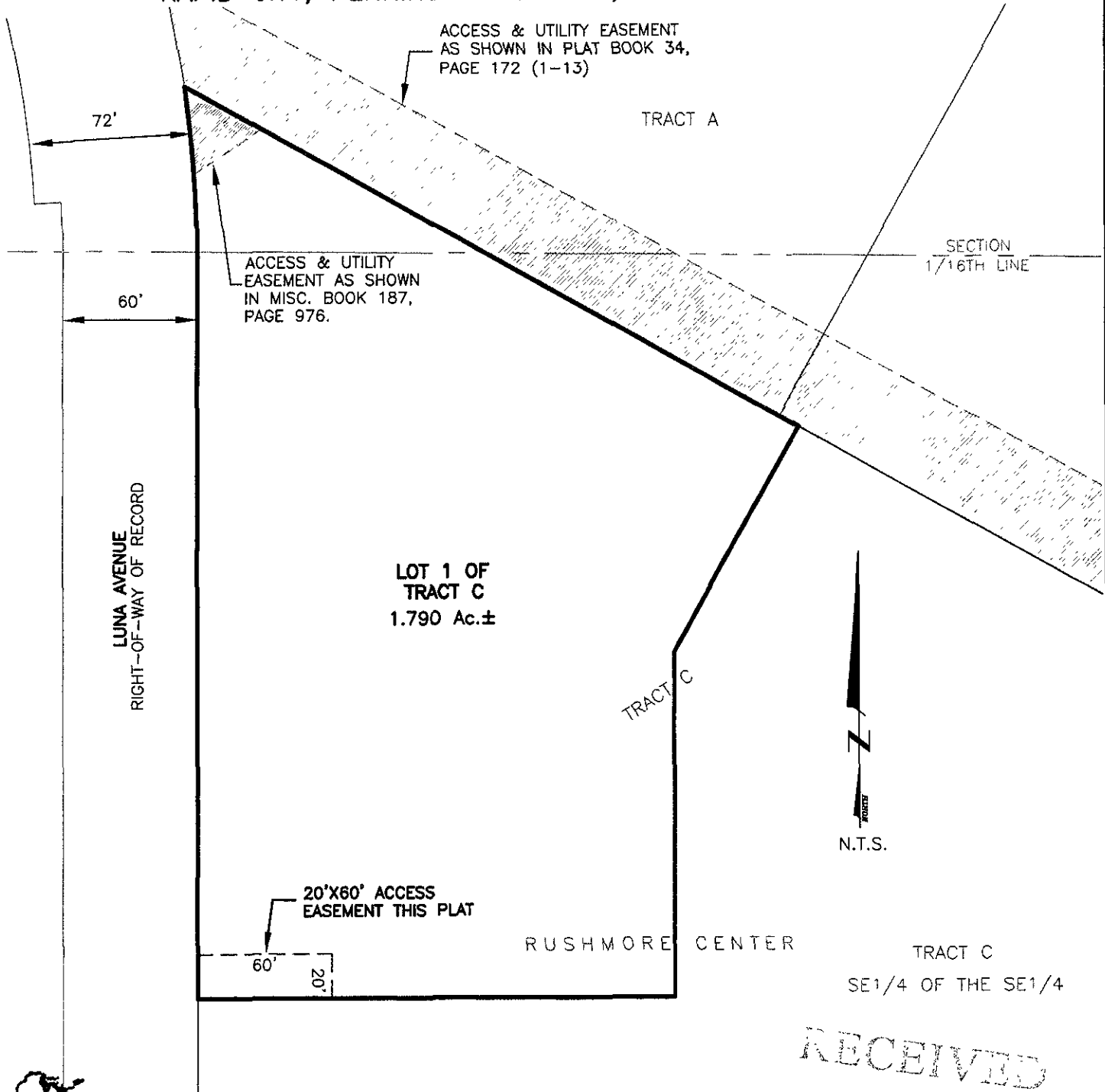


PLAT OF LOT 1 OF TRACT C RUSHMORE CENTER

(formerly a portion of Tract C of Rushmore Center)
LOCATED IN THE E1/2 OF THE SE1/4 OF
SECTION 30, T2N, R8E, BHM
RAPID CITY, PENNINGTON COUNTY, SOUTH DAKOTA



CITY HALL 1903

Renner & Associates, LLC.

616 Sixth St. * Rapid City, SD 57701 * 605/721-7310
FAX: 605/721-7313 * E-MAIL: Gary@RennerAssoc.com
* Spearfish 605/717-0016 *

RECEIVED

OCT - 9 2009

Renner & Associates, LLC
616 Sixth St.
Rapid City, SD 57701
605/721-7310