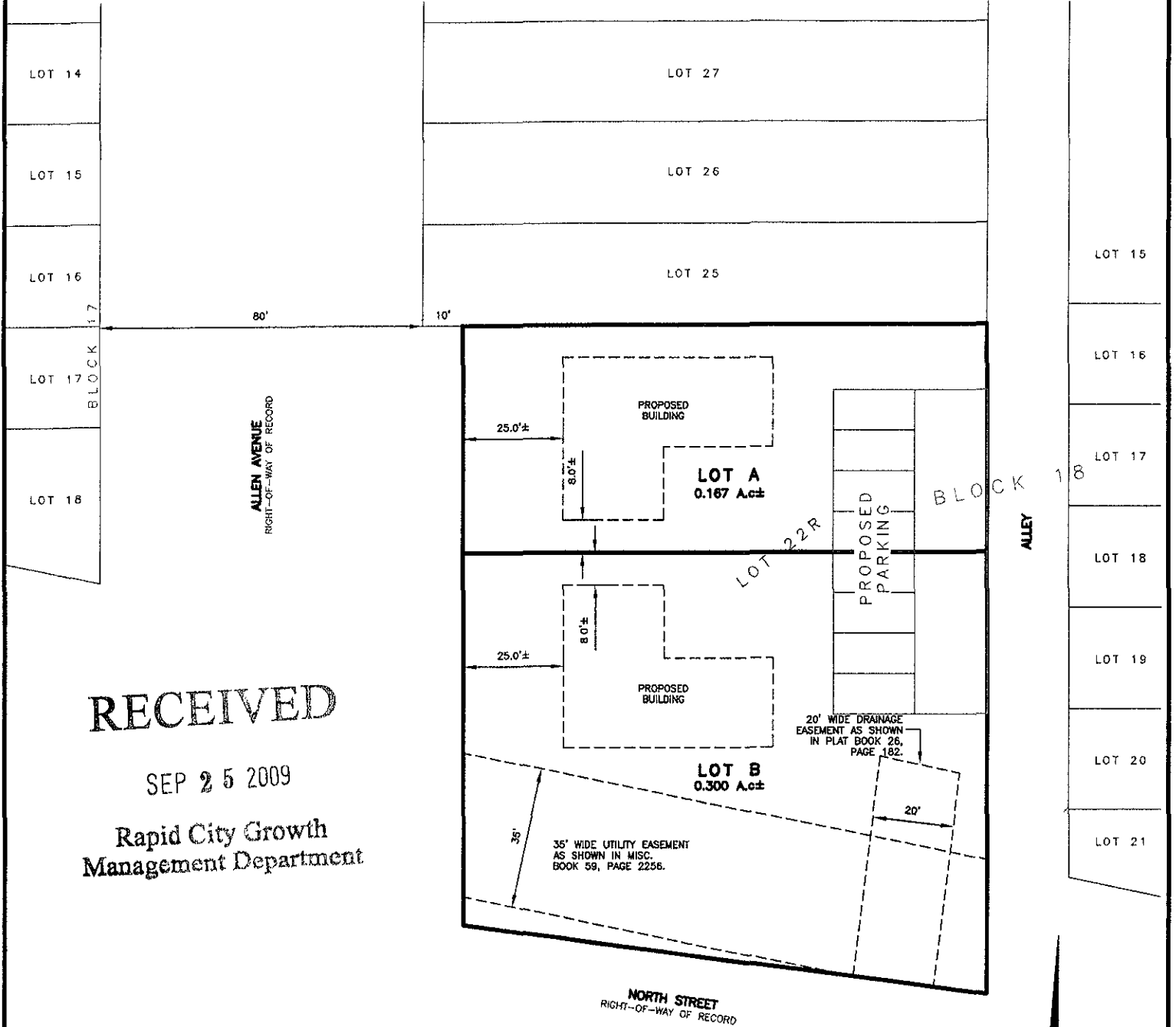


09PL060

LAYOUT PLAT OF LOTS A AND B OF LOT 22R OF BLOCK 18, NORTH RAPID ADDITION

(formerly Lot 22R of Block 18 of North Rapid Addition)

LOCATED IN THE S1/2 OF THE NW1/4,
SECTION 36, T2N, R7E, BHM
RAPID CITY, PENNINGTON COUNTY, SOUTH DAKOTA



RECEIVED

SEP 25 2009

Rapid City Growth
Management Department



Renner & Associates, LLC.

616 Sixth St. * Rapid City, SD 57701 * 605/721-7310
FAX: 605/721-7313 * E-MAIL: Gary@RennerAssoc.com
* Spearfish 605/717-0016 *



N.T.S.