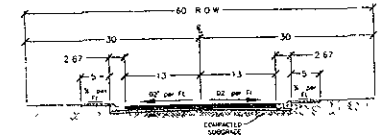


09PD049

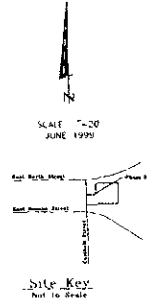
N. 0902 Bl. 1 C.  
NORTH 1/4  
400.00 (ft)  
400.00 (ft)



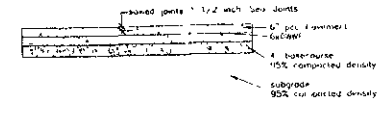
**Typical Road Section**

|                  |                              |
|------------------|------------------------------|
| Paving Thickness | E 18 s 150 000 CBR4 3 3/4 56 |
| Wearing Surface  | 2" Class G type 2            |
| Base Layer       | 3" Class G, type 1           |
| Gravel           | 5" Granular Base Course      |

Notes  
Notably & coordinate with all utility companies prior to beginning work

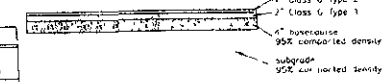


**Note Regarding Concrete Paving**  
Mix, handle place & cure per AC1318  
Use 4,000 psi 28 day strength Type II Crushed aggregate 1 minus



Use expansion joint at building edges  
Maximum joint spacing 14 ft  
Match corners, surfaces features with joint layout  
Use elastomeric joint seal or equal

**Note Regarding Asphalt Paving**  
Use Rapid City Standard Specification.



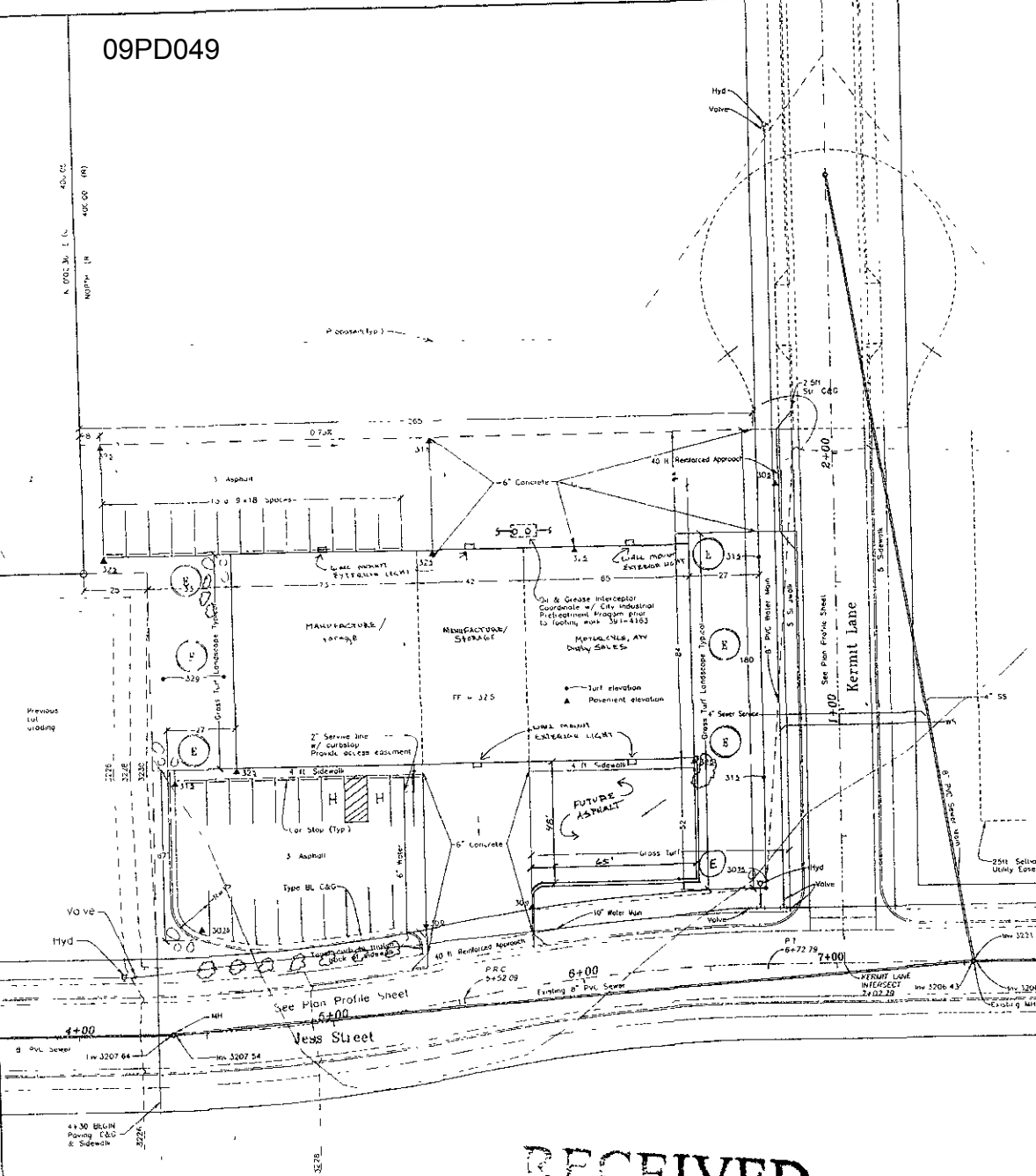
**NOTES REGARDING EROSION CONTROL**  
Place & maintain silt fence straw bales or similar erosion control Reference City Standard Detail 14a-1a to 1c  
Prevent sediment from leaving construction area Obtain Air Ductily Permit prior to beginning work  
Obtain Permit to work in ROW as applicable

**Notes Regarding Landscaping**  
Furnish and install landscaping materials in accordance with City Landscaping Ordinance 17.50.800  
Plants required \$2,050

| PARKING RATES              |                    |
|----------------------------|--------------------|
| Manufacturing              | 7,000 sq ft        |
| Rate                       | 21 per 1,000 sq ft |
| New and Used Vehicle Sales | 4,500 sq ft        |
| Rate                       | 3 per 1,000 sq ft  |
| Storage                    | 3,500 sq ft        |
| Rate                       | 20 per 1,000 sq ft |
| Total Spaces Required      | 29,075 Spaces      |
| Total Spaces Provided      | 31 Spaces          |

|              |  |               |
|--------------|--|---------------|
| E            | Evergreen, Mature height > 20 ft, 2,000 plants | 7 = 14,000    |
|              | Ponderosa Pine, Colorado Blue Spruce or equal  | 1600 = 16,000 |
|              | Shrub, mature height > 2ft, 250 plants         | 18 = 4,500    |
|              | Southwestern Dogwood, Blue Spruce or equal     |               |
| <b>Total</b> |  | <b>34,500</b> |

|  |                                |
|--|--------------------------------|
| 15862 4/1/15<br>15824 11/15/15<br>4441 1 20<br>308 # | 1330 1875 11<br>RAPID CITY, SD |
| <b>SITE PLAN</b>                                     |                                |



**RECEIVED**

SEP 26 2000

Rapid City Council  
Management Department