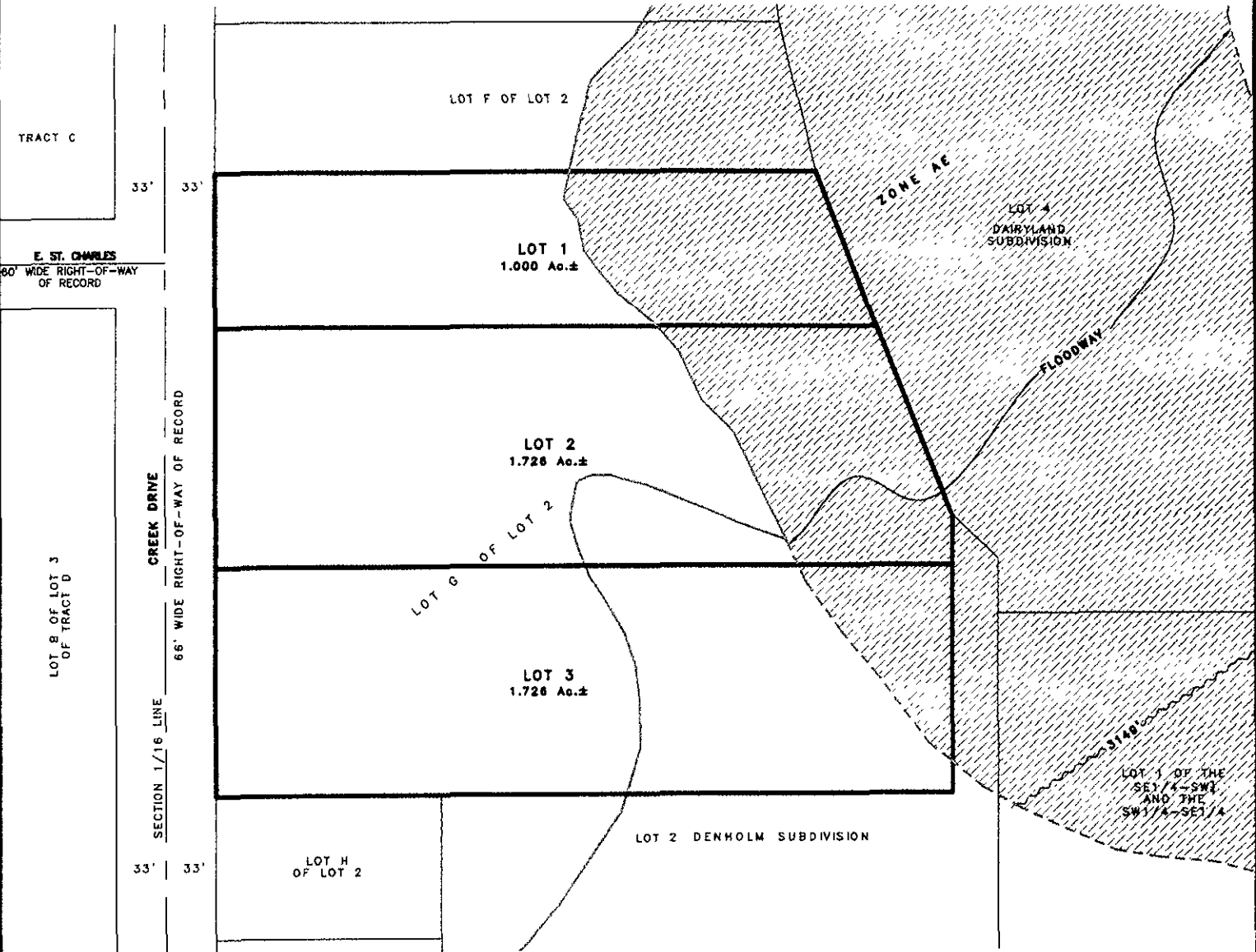


LAYOUT PLAT OF LOTS 1-3 OF LOT G OF LOT 2 OF THE SE1/4 OF THE SW1/4

(formerly Lot G of Lot 2 OF THE SE1/4 of the SW1/4)
LOCATED IN SECTION 5, T1N, R8E, BHM
RAPID CITY, PENNINGTON COUNTY, SOUTH DAKOTA



RECEIVED

AUG 2 2009

Rapid City Growth
Management Board

Renner & Associates, LLC.

616 Sixth St. * Rapid City, SD 57701 * 605/721-7310
FAX: 605/721-7313 * E-MAIL: Gary@RennerAssoc.com
* Spearfish 605/717-0016 *



CITY HALL 1903



N.T.S.