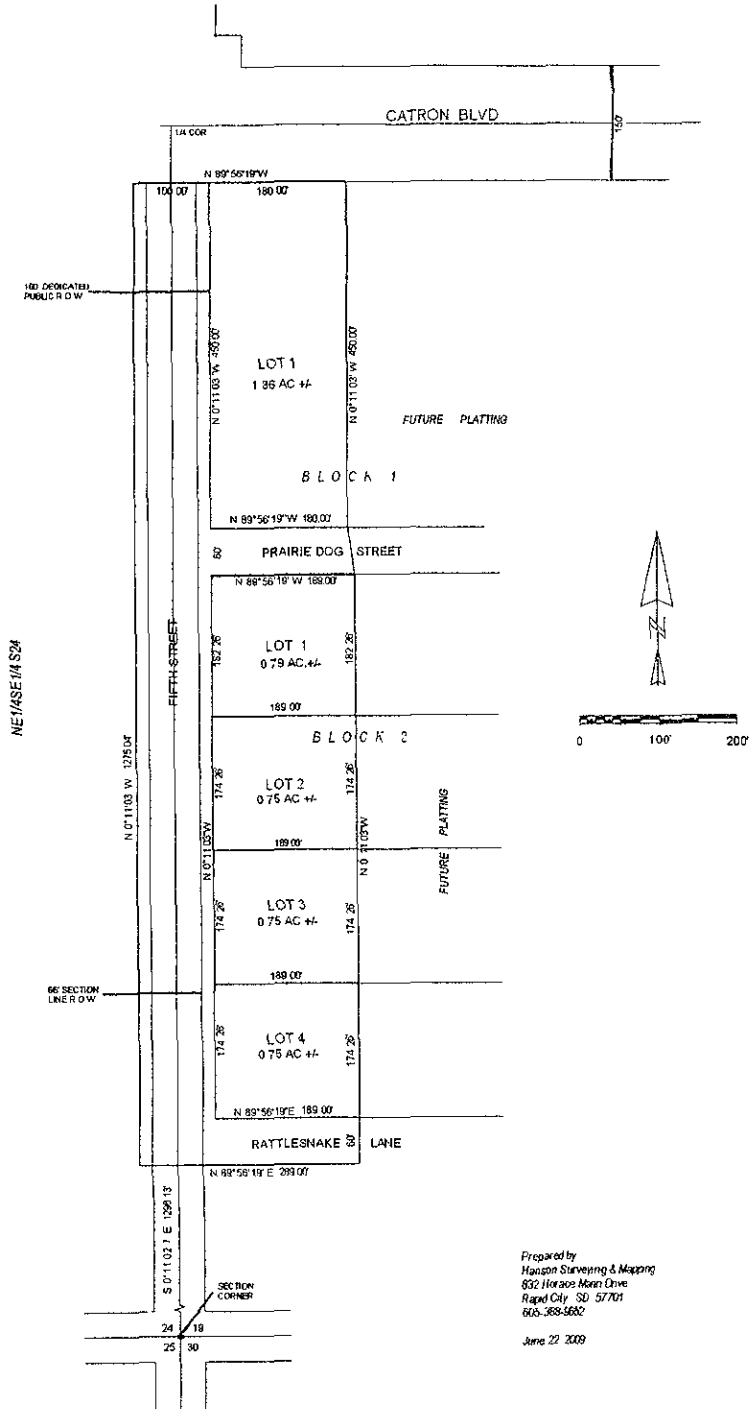


LAYOUT PLAT

LOT 1 IN BLOCK 1 AND LOTS 1-4 IN BLOCK 2 OF \_\_\_\_\_ SUBDIVISION  
 LOCATED IN NW1/4SW1/4 AND SW1/4SW1/4 OF SECTION 19, T1N, R8E, B H M  
 PENNINGTON COUNTY, SOUTH DAKOTA



Prepared by  
 Hanson Surveying & Mapping  
 652 Hickman Mann Drive  
 Rapid City, SD 57701  
 605-388-6602  
 June 22, 2009

TOTAL AREA DEDICATED TO PUBLIC R.O.W. = 3.44 AC +/-  
 Utility & minor drainage easement 8' on the interior side of all lot lines