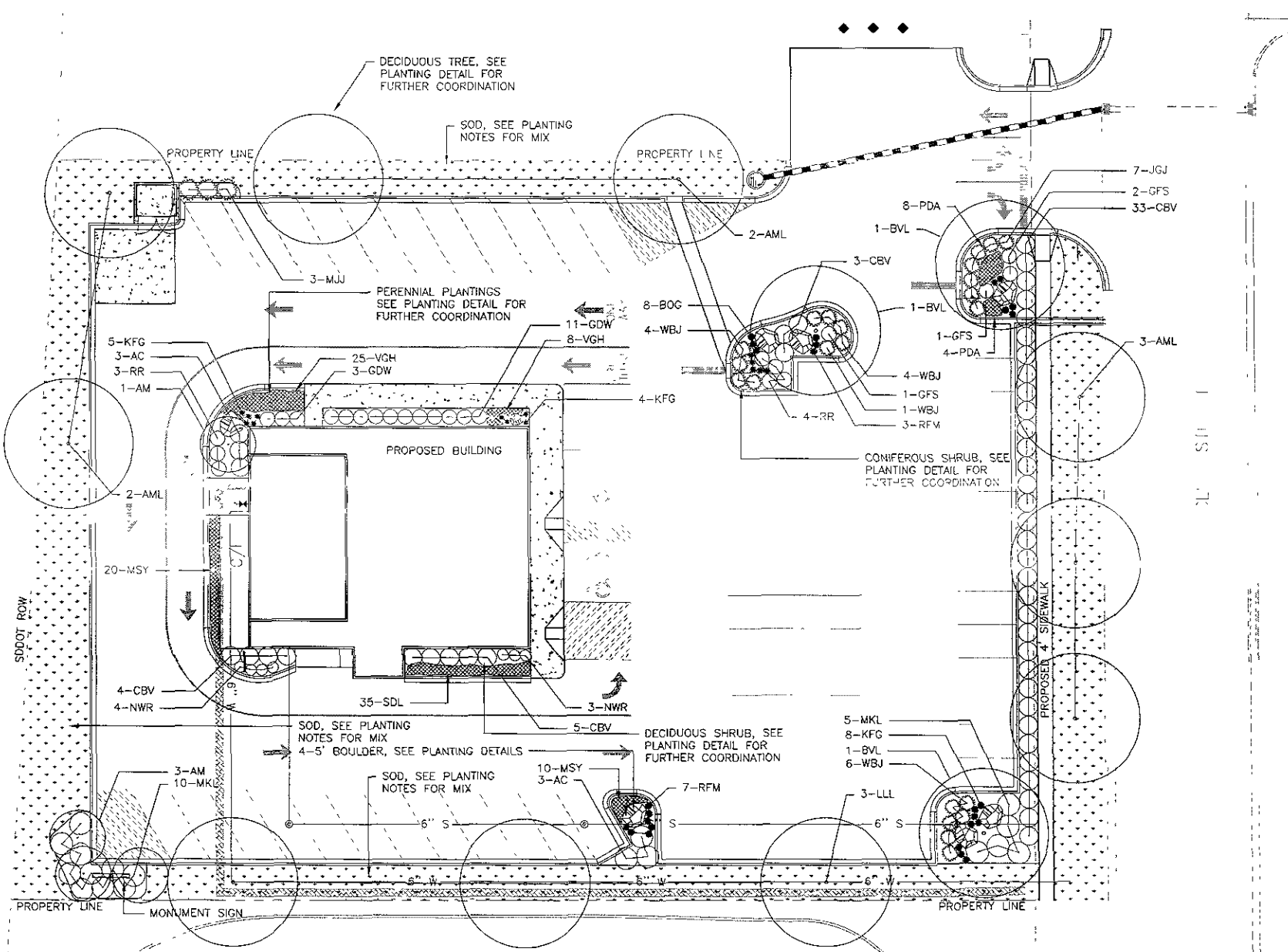
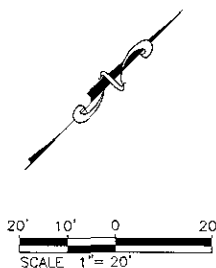


PLANTING SCHEDULE

Table with columns: QTY, KEY, COMMON NAME, BOTANICAL NAME, SIZE, NOTES/SPACING. Includes sections for Deciduous Trees, Coniferous Shrubs, Deciduous Shrubs, and Perennials.

FOR CITY OF RAPID CITY USE ONLY
PIZZA RANCH LANDSCAPE SUMMARY
BUILDING AREA PIZZA RANCH 4,550 S.F.
SITE AREA 53,865 S.F.
LANDSCAPE POINTS REQUIRED 49,315 PTS

Table with columns: ITEM, QUANTITY, POINT VALUE, TOTAL POINTS. Lists items like Deciduous Trees - Med, Deciduous Trees - Small, Deciduous Shrubs, etc.



PLANTING NOTES

- 1. THE CONTRACTOR SHALL COORDINATE PLANTING INSTALLATION WITH OTHER CONTRACTORS PERFORMING WORK ON SITE.
2. PRIOR TO CONSTRUCTION, THE CONTRACTOR SHALL BE RESPONSIBLE FOR LOCATING ALL UNDERGROUND UTILITIES AND SHALL AVOID DAMAGE TO ALL UTILITIES DURING THE COURSE OF THE WORK.
3. THE CONTRACTOR IS SPECIFICALLY CAUTIONED THAT THE LOCATIONS AND/OR ELEVATION OF EXISTING UTILITIES AS SHOWN ON THESE PLANS IS BASED ON RECORDS OF THE VARIOUS UTILITY COMPANIES AND, WHERE POSSIBLE, MEASUREMENTS TAKEN IN THE FIELD.
4. NO PLANT OR CULTIVAR SUBSTITUTION WILL BE ACCEPTABLE WITHOUT WRITTEN APPROVAL BY THE LANDSCAPE ARCHITECT OR OWNER'S CIVIL ENGINEERING CONSULTANT.
5. ALL PLANTING LOCATIONS SHALL BE STAKED OR SET OUT BY THE CONTRACTOR THE CONTRACTOR SHALL NOTIFY THE LANDSCAPE ARCHITECT 2 DAYS PRIOR TO PLANTING THE STAKING IS COMPLETE.
6. ALL TREES AND SHRUBS SHALL BEAR THE SAME RELATIONSHIP TO PLANTED GRADE AS IN THE NURSERY.
7. ALL SYNTHETIC MATERIALS FROM AROUND THE TREE TRUNK AND ROOT BALL SHALL BE REMOVED AND NOT INCLUDED WITHIN THE BACKFILL SOIL MIX STRING, ROPE, SYNTHETIC BURLAP, PLASTIC, STRAPPING, AND OTHER MATERIALS THAT WILL NOT DECOMPOSE IN THE SOIL SHALL BE REMOVED AT PLANTING.
8. THE CONTRACTOR SHALL EXERCISE CARE IN THE INSTALLATION OF ALL PLANTING MATERIAL ANY PLANT MATERIAL INJURED OR DESTROYED DURING CONSTRUCTION SHALL BE REPLACED BY THE CONTRACTOR AT NO COST TO THE OWNER.
9. ALL PLANTING MATERIAL, SHALL HAVE A 2 YEAR WARRANTY PERIOD TURF SHALL HAVE A 90 DAY WARRANTY PERIOD
9.1 THE WARRANTY PERIOD SHALL BEGIN ONCE PLANTING AND IRRIGATION HAVE BEEN ACCEPTED IN WRITING FROM THE OWNER.
10. THE PLANTING SEASON SHALL BE FROM
10.1 SPRING APRIL 15TH TO JUNE 15TH
10.2 FALL SEPT 1ST TO OCT 1ST
11. TREE SHALL BE SPRAYED WITH AN ANTI-DESICCANT PRIOR TO LEAVING THE NURSERY AND WITHIN 24 HOURS OF PLANTING
12. A SLOW RELEASE FERTILIZER SHALL BE APPLIED TO THE PLANTING SOIL AS PER THE PLANTING SPECIFICATIONS AND SOIL TEST RECOMMENDATIONS THE FERTILIZER SHALL BE APPLIED AT A RATE AS PER SOIL TEST RECOMMENDATIONS FOR TREES, SLOW RELEASE FERTILIZER TABLETS PLACED IN PLANTING PITS ARE ACCEPTABLE
13. ALL MULCH USED ON SITE SHALL BE A 2-4" BEIGE COBBLE MINERAL MULCH THE MULCH SHALL BE INSTALLED TO A 4" DEPTH
14. ALL PLANT STOCK SHALL COMPLY WITH THE CURRENT ADDITION OF THE AMERICAN STANDARD FOR NURSERY STOCK
15. ALL PLANTING SOURCES SHALL BE FROM LIKE CLIMATES AND SOIL CONDITIONS AS PROJECT NOTIFY LANDSCAPE ARCHITECT IF PLANTING SOURCES ARE OUTSIDE OF A 300 MILE DISTANCE FOR REVIEW OF NURSERY AND CONDITIONS
16. UNLESS OTHERWISE INDICATED ALL PLANTING BEDS IN TURF AREAS SHALL BE BORDERED BY A 4" BLACK STEEL LANDSCAPE EDGER SEE PLANTING DETAILS.
17. ALL PARKING LOT ISLANDS SHALL BE MOUNDING IN THE CENTER SLOPING DOWNWARD FROM THE MIDDLE OUTWARD AT NO GREATER THAN 4% AND NO LESS THAN 2%
18. FINISHED GRADE SHALL BE HELD 3 INCHES BELOW TOP OF CURB AND 2 INCHES BELOW TOP OF CURB FOR SOD OTHER AREAS AS SPECIFIED, SHALL RECEIVE A MULCH DEPTH OF 4" OVER THE ROOT BALL
19. A 2 FOOT CLEARANCE SHALL BE ALLOWED WITHOUT LANDSCAPING AT THE EDGE OF ALL ISLANDS FOR DOOR SWINGS.
20. SEE CIVIL ENGINEERING PLANS FOR ALL WALL LOCATION AND DETAILS
21. IF A CONFLICT IS FOUND BETWEEN THE PLANTING SCHEDULE AND THE PLAN COUNT, THE PLAN COUNT TAKES PRECEDENCE OVER THE PLANTING SCHEDULE
22. TURFGRASS SOD: SEE PLAN FOR LOCATIONS
22.1 SOD SHALL BE WELL-ROOTED AND BE COMPLETELY FREE FROM NOXIOUS WEEDS AND REASONABLY FREE FROM OTHER OBJECTIONABLE GRASSES, WEEDS, AND STONES SOONING AND SEEDING SHALL BE DONE IN ACCORDANCE WITH THE SOUTH DAKOTA STANDARD SPECIFICATIONS FOR HIGHWAY CONSTRUCTION AND THE "WALMART STANDARD SITEWORK SPECIFICATIONS"
22.2 CERTIFIED, COMPLYING WITH "SPECIFICATIONS FOR TURFGRASS SOD MATERIALS" IN TPI'S "GUIDELINE SPECIFICATIONS TO TURFGRASS SOODING" FURNISH VIABLE SOD OF UNIFORM DENSITY, COLOR, AND TEXTURE, STRONGLY ROOTED, AND CAPABLE OF VIGOROUS GROWTH AND DEVELOPMENT WHEN PLANTED
22.3 THE SOD SHALL BE A FULL SUN MIX KENTUCKY BLUE GRASS (POA PRATIENSIS) MIX CONTAINING A MINIMUM OF 3 CULTIVARS
22.4 LAY SOD WITHIN 24 HOURS OF HARVESTING DO NOT LAY SOD IF DORMANT OR IF GROUND IS FROZEN OR MUDDY
22.5 LAY SOD TO FORM A SOLID MASS WITH TIGHTLY FITTED JOINTS BUTT ENDS AND SIDES OF SOD, DO NOT STRETCH OR OVERLAP STAGGER SOD STRIPS OR PADS TO OFFSET JOINTS IN ADJACENT COURSES. AVOID DAMAGE TO SUBGRADE OR SOD DURING INSTALLATION. TAMP AND ROLL LIGHTLY TO ENSURE CONTACT WITH SUBGRADE, ELIMINATE AIR POCKETS, AND FORM A SMOOTH SURFACE WORK SIFTED SOIL OR FINE SAND INTO MINOR CRACKS BETWEEN PIECES OF SOD. REMOVE EXCESS TO AVOID SMOTHERING SOD AND ADJACENT
23. THE CONTRACTOR SHALL FULLY COMPLY WITH ALL RAPID CITY ZONING CODES SECTION 17.50.300 - LANDSCAPE ORDINANCE
24. ALL LANDSCAPE BEDS SHALL HAVE LANDSCAPE FABRIC INSTALLED UNDER THE MULCH BED
24.1 COMPOSITE FABRIC: WOVEN, NEEDLE-PUNCHED POLYPROPYLENE SUBSTRATE BONDED TO A NONWOVEN POLYPROPYLENE FABRIC, 4.8 OZ./SQ. YD.
25. THE PLANT MATERIAL INSTALLATION SHALL BE TIMED WITH IRRIGATION INSTALLATION ALLOWING PLANTS TO GET RECOMMENDED WATER AMOUNTS OTHER THAN IMMEDIATE PLANT WATERING, TEMPORARY WATERING SHALL NOT BE ALLOWED
26. ALL PLANTS ARE SUBJECT TO THE APPROVAL OF THE LANDSCAPE ARCHITECT AND/OR OWNER BEFORE, DURING AND AFTER INSTALLATION.
27. CONTRACTOR IS RESPONSIBLE FOR VERIFYING ALL QUANTITIES SHOWN ON THESE PLANS BEFORE PRICING THE WORK.
28. ALL PLANTS MUST BE HEALTHY, VIGOROUS MATERIAL, FREE OF PEST AND DISEASE.
29. ALL PLANTS MUST BE CONTAINER GROWN OR BALLED AND BURLAPPED AS INDICATED IN THE PLANT LIST
30. ALL TREES MUST BE STRAIGHT TRUNKED AND FULL HEADED AND MEET ALL REQUIREMENTS SPECIFIED
31. CONTRACTOR TO TAKE SPECIAL CARE TO MAINTAIN SOD IN THE AREAS OF CHANNELIZED FLOW UNTIL SOD HAS ESTABLISHED THE DRAINAGE WAYS, INLETS MUST BE KEPT FREE OF SEDIMENT. ANY AREAS OF EROSION MUST BE MAINTAINED IMMEDIATELY



PRELIMINARY FOR REVIEW ONLY

CITY OF RAPID CITY GROWTH MANAGEMENT DEPT. DEVELOPMENT SERVICES

Plans are reviewed for general conformance with applicable governmental regulations, stipulations, design criteria and engineering standards. The City of Rapid City does not certify the suitability, adequacy or completeness of the plans or design, which are the responsibility of the engineer of record. All necessary permits shall be obtained prior to construction of the proposed public improvements.

Engineering Reviewer Date

COMMENTS

Internal Job No 09-0560 Designed By MSS Drawn By MSS

Surveyed By RENNER & ASSOCIATES Survey Date 07/2009

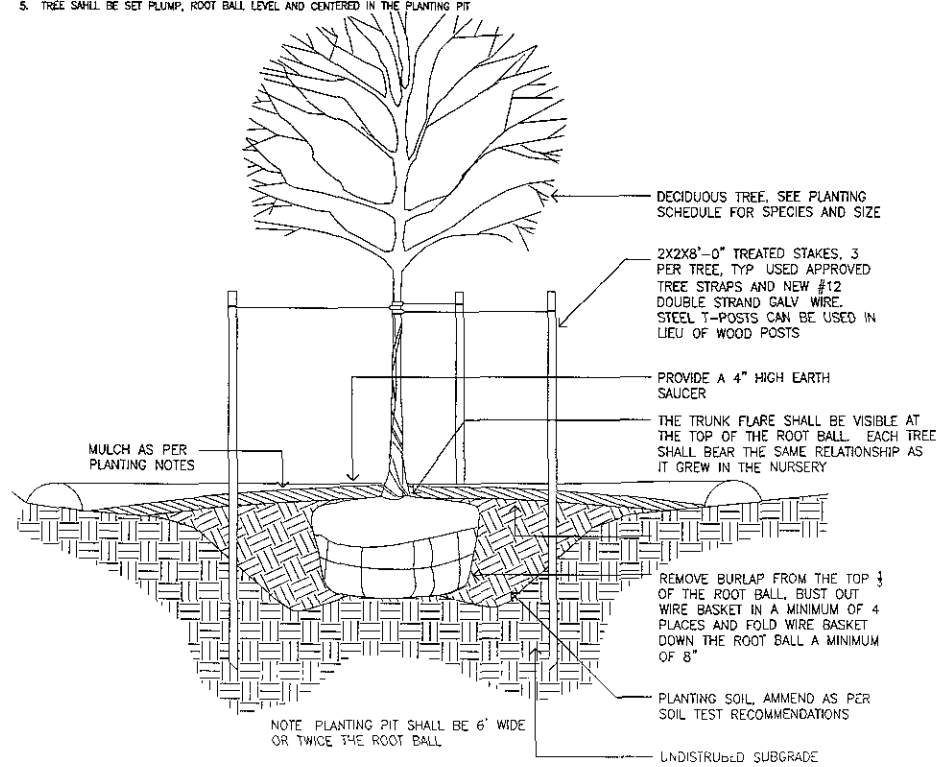
Submittals

Revisions

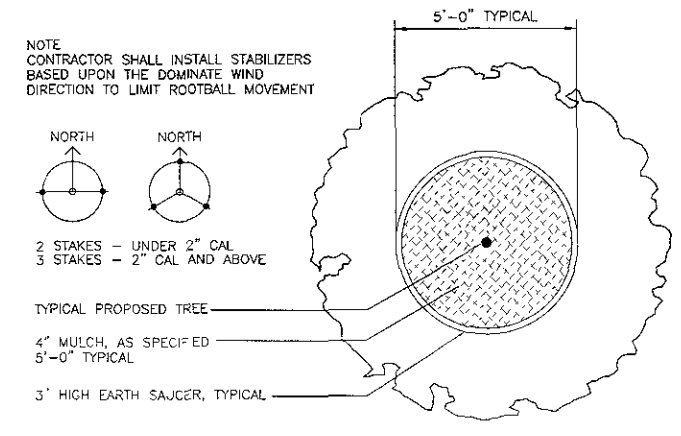
Project Name Sheet Name

PLANTING PLAN

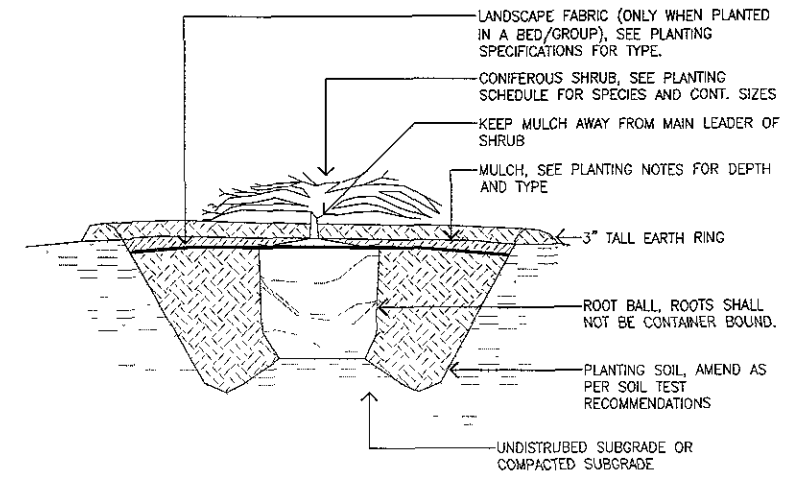
- NOTE:
1. A 6" DIAMETER BLACK DRAIN TILE PIPE (FLEXIBLE) SHALL BE PLACED AROUND THE TRUNK TO A HEIGHT OF 24"
 2. WOOD STAKES USED FOR GUY WIRES SHALL NOT CONTAIN CHROMIATED COPPER ARSENATE (CCA)
 3. THE PLANTING PIT SHALL BE A MINIMUM 3/5 THE DEPTH OF THE ROOT BALL AND AT A MINIMUM TWICE THAT OF THE ROOT BALL'S DIAMETER.
 4. THE PLANTING SOIL SHALL BE FREE OF ALL CONSTRUCTION MATERIAL, CONCRETE, AND ROCKS GREATER THAN 1" DIAMETER
 5. TREE SHALL BE SET PLUMP, ROOT BALL LEVEL AND CENTERED IN THE PLANTING PIT



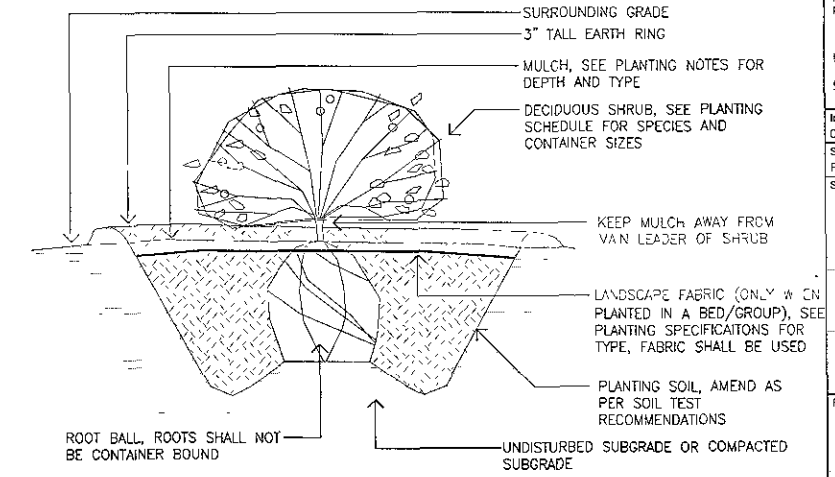
1 BALLED & BURLAPPED TREE
NO SCALE PLANTING AND STAKING DETAIL



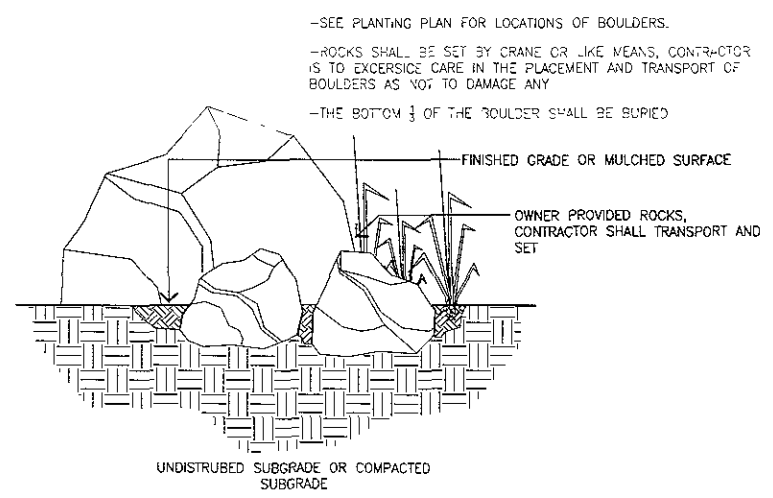
2 TYPICAL MULCH RING DETAIL
NO SCALE FOR TREES IN LAWN AREAS



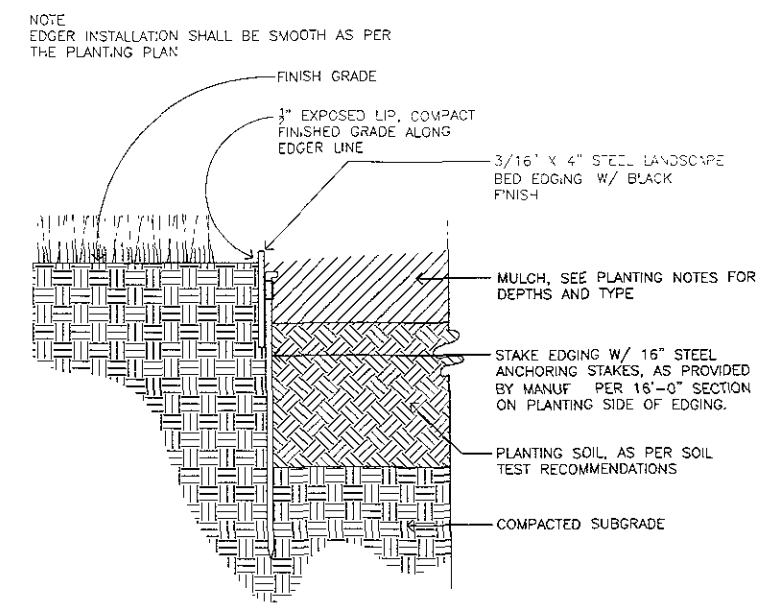
3 CONTAINER CONIFEROUS SHRUB
SCALE 3/4" = 1'-0" TYPICAL PLANTING DETAIL



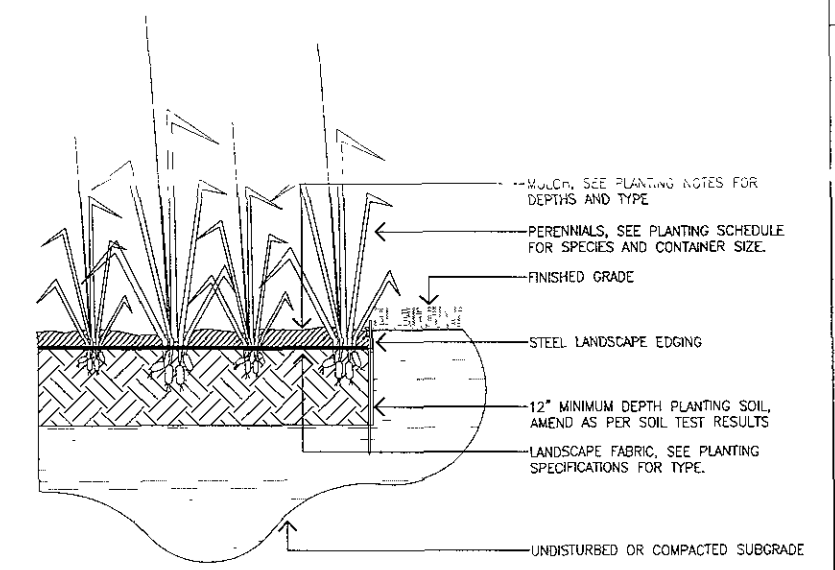
4 CONTAINER DECIDUOUS SHRUB
SCALE 3/4" = 1'-0" PLANTING AND STAKING DETAIL



5 LANDSCAPE BOULDER SETTING
NO SCALE TYPICAL DETAIL



6 STEEL LANDSCAPE EDGING
3/4" = 1'-0" TYPICAL SECTION



7 PERENNIAL BED PLANTING
NOT TO SCALE TYPICAL PLANTING DETAIL

PRELIMINARY FOR REVIEW ONLY

CITY OF RAPID CITY
GROWTH MANAGEMENT DEPT
DEVELOPMENT SERVICES

Plans are reviewed for general conformance with applicable governmental regulations, stipulations, design criteria and engineering standards. The City of Rapid City does not certify the suitability, adequacy or completeness of the plans or design, which are the responsibility of the engineer of record. All necessary permits shall be obtained prior to construction of the proposed public improvements.

Engineering Reviewer: _____ Date: _____
COMMENTS: _____

Internal Job No: 09-0560
Designed By: MSS
Drawn By: MSS
Surveyed By: REYNOLDS & ASSOCIATES
Survey Date: 07/2009
Submittals: _____

Revisions: _____

Project Name: _____
Sheet Name: _____

PLANTING DETAILS

PIZZA RANCH