

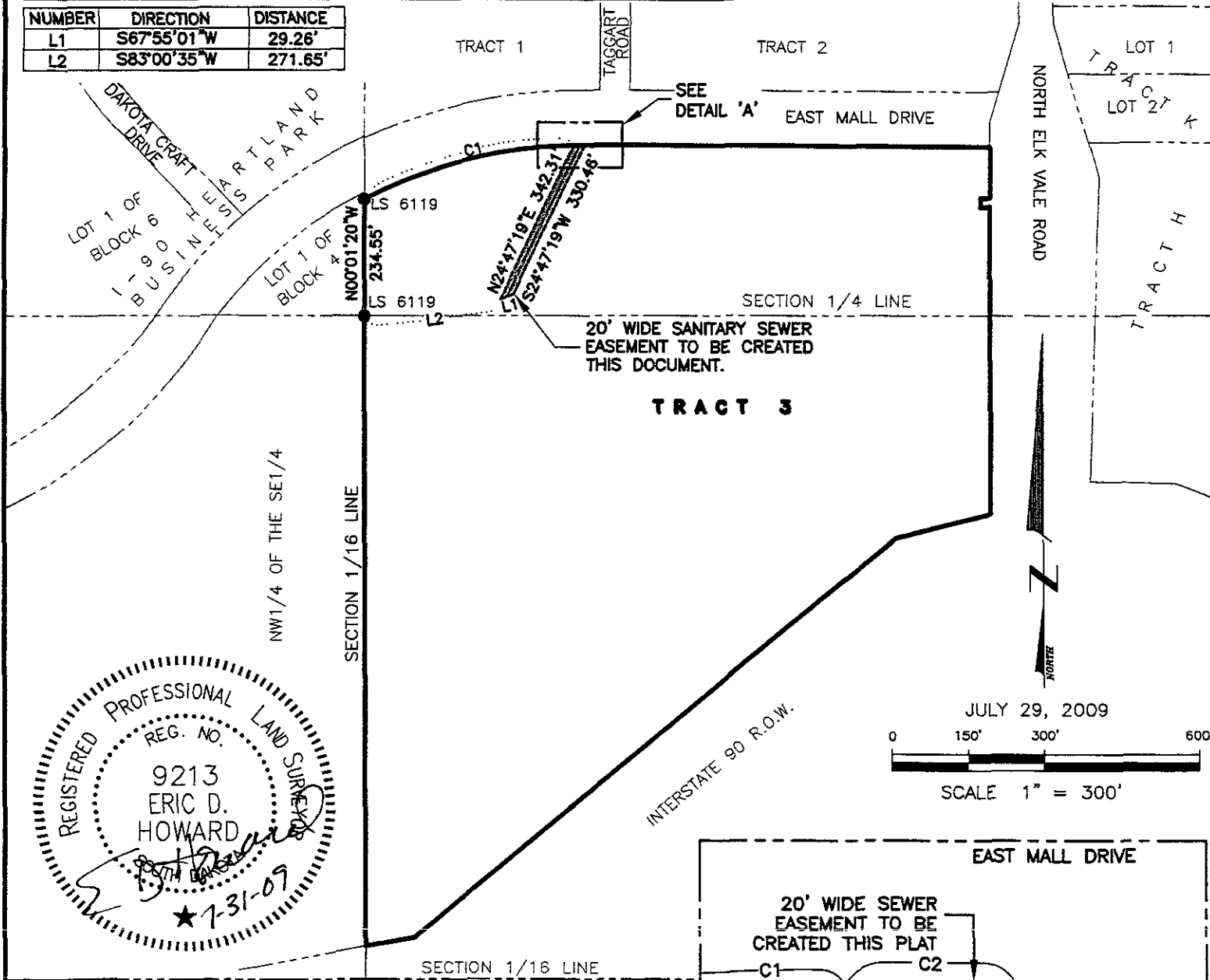
**EXHIBIT 'A'**  
**20' WIDE SANITARY SEWER EASEMENT**  
**TRACT 3 OF**  
**DISCOVERY SUBDIVISION**

LOCATED IN THE NE1/4 OF THE SE1/4  
 AND IN THE SE1/4 OF THE NE1/4  
 SECTION 28, T2N, R8E, BHM

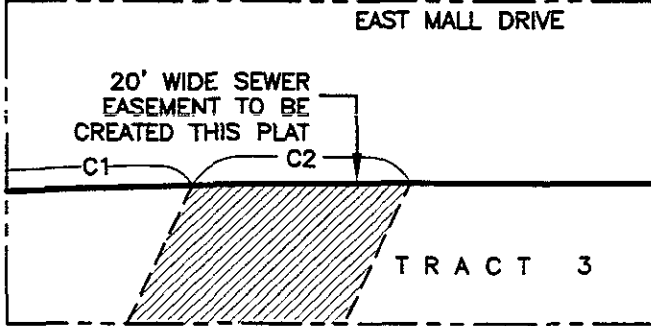
RAPID CITY, PENNINGTON COUNTY, SOUTH DAKOTA

NUMBER	RADIUS	ARC LENGTH	CHORD LENGTH	DELTA	CHORD DIRECTION
C1	915.00	431.43	427.45	27°00'56"	N75°11'15"E
C2	915.00	22.14	22.14	01°23'11"	N89°23'18"E

NUMBER	DIRECTION	DISTANCE
L1	S67°55'01"W	29.26'
L2	S83°00'35"W	271.65'



REGISTERED PROFESSIONAL LAND SURVEYOR  
 REG. NO. 9213  
 ERIC D. HOWARD  
 ★ 7-31-09



**Renner & Associates, LLC.**

DETAIL 'A'  
 SCALE 1" = 20'

616 Sixth St. \* Rapid City, SD 57701 \* 605/721-7310  
 FAX: 605/721-7313 \* E-MAIL: Gary@RennerAssoc.com  
 \* Spearfish 605/717-0016 \*



CITY HALL 1903