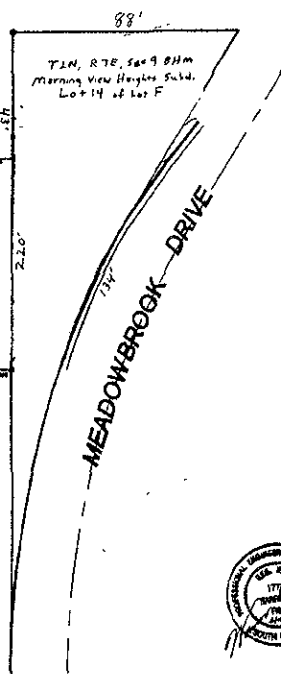
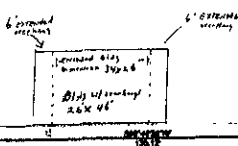
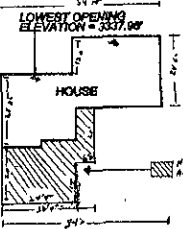
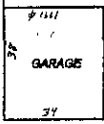
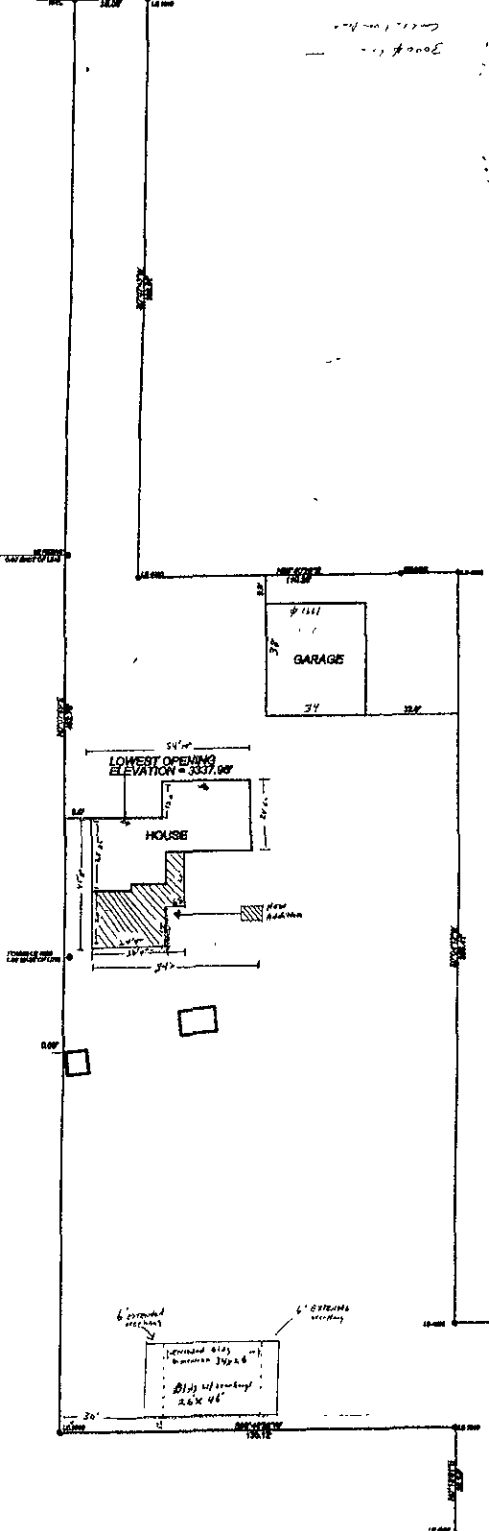


WESTERN AVENUE



T1N, R7E Sec 9 BHM, TRACT D of Schnell Subdivision



**BOUNDARY SURVEY AND GRADING PLAN**  
**TRACT D OF SCHNELL SUBDIVISION, RAPID CITY, SOUTH DAKOTA**  
**BRYAN SCHNELL**

SURVEYED BY: <b>BNP</b>	DATE: <b>4/20/02</b>	CHECKED BY: <b>MS</b>	PROJECT No. <b>020404</b>
<b>FISK LAND SURVEYING</b>		1030 MANY STREET, P.O. BOX 8154 RAPID CITY, SOUTH DAKOTA 57709	
AND CONSULTING ENGINEERS, INC.		(605) 348-1530 FAX (605) 348-1912	