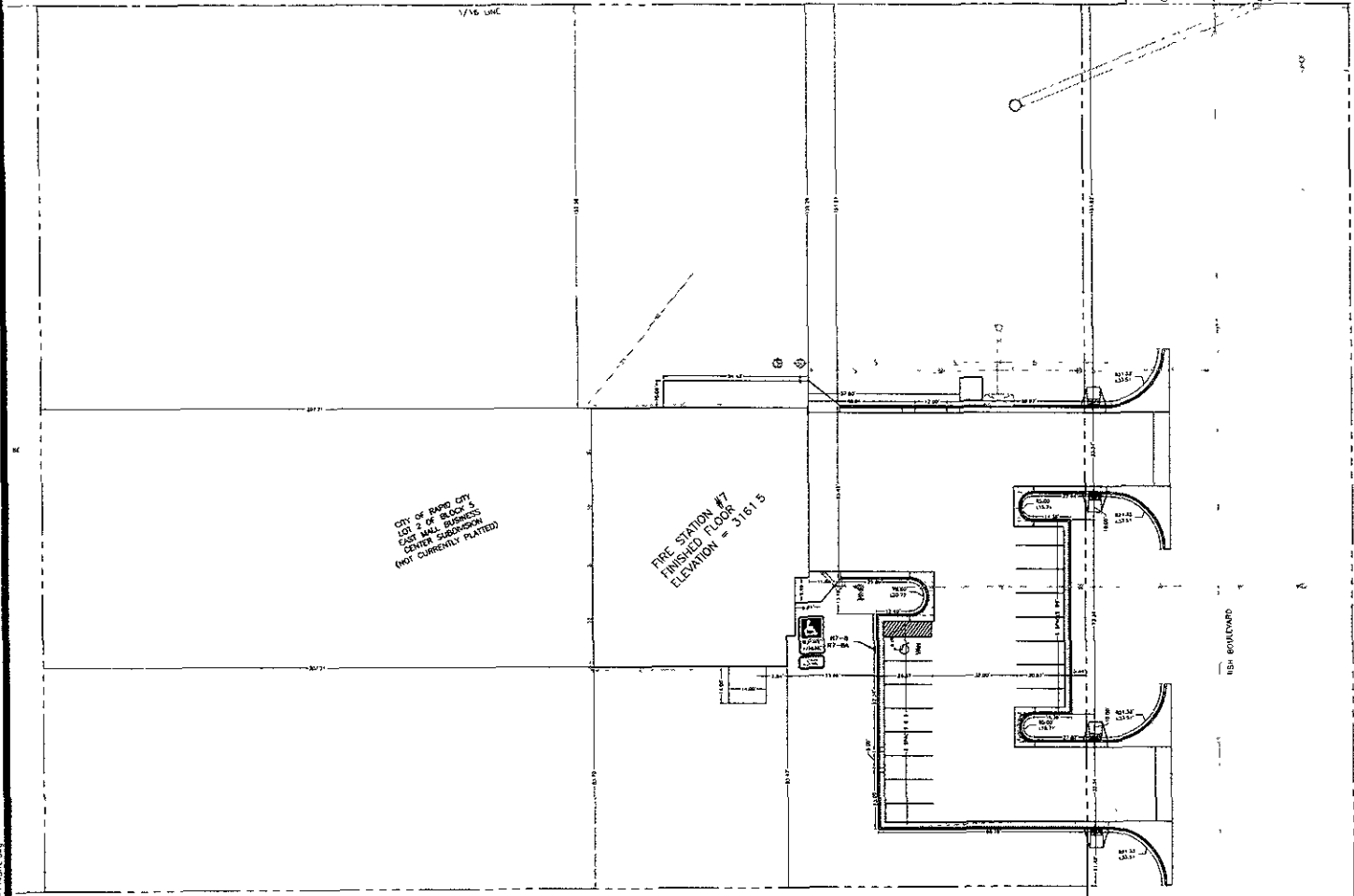


Copyright 2009, Ferber Engineering Company, Inc.
 This document and the ideas and designs contained herein are the intellectual property of Ferber Engineering Company, Inc. and are to be used only for the project and site shown hereon. No part of this document may be reproduced or transmitted in any form or by any means, electronic or mechanical, including photocopying, recording, or by any information storage and retrieval system, without the written permission of Ferber Engineering Company, Inc.

SE 1/4 NE 1/4 NW 1/4
 SEC 29 12N 10E



CITY OF RAPID CITY
 LOT 2 OF BLOCK 2
 CASE MALL BUSINESS
 CENTER SUBDIVISION
 (NOT CURRENTLY PLATTED)

FIRE STATION #7
 FINISHED FLOOR
 ELEVATION = 3161.5

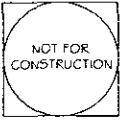
- LAYOUT NOTES**
1. ALL WORK SHALL BE SUBMITTED IN ACCORDANCE WITH THE CITY OF RAPID CITY STANDARD SPECIFICATIONS FOR PUBLIC WORKS CONSTRUCTION 2007 EDITION WITH ALL CURRENT UPDATES.
 2. ALL DIMENSIONS ARE TO EDGE OF SIDEWALK, BACK OF CURB, AND FACE OF BUILDING.
 3. ALL DIMENSIONS ARE IN FEET UNLESS OTHERWISE NOTED.
 4. TOPOGRAPHIC INFORMATION SHOWN IN THIS PLAN SHEET REFLECTS FIELD IN-TOP BOUNDARY CONSTRUCTION PLANS CONSTRUCTION STARTED ON THE 7TH BOULEVARD PROJECT IN JUNE 2008.

NAME, LEAST PARTICIPATING
 BOARD OF LOT 1.3 OF
 SILVER SPRING SUBDIVISION

2.1
 Sheet Number
FD09-1767
 Project Number

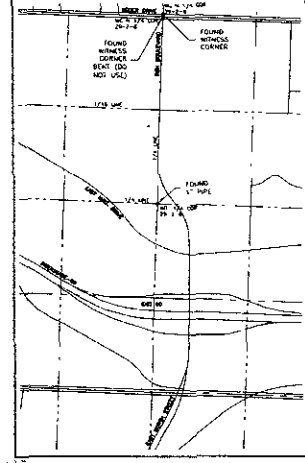
08/23/09
 Rapid City Fire Department
FIRE STATION #7
 CITY PROJECT NUMBER **FD09-1767**
 Rapid City South Dakota

Drawn By: **AK**
 Checked By: **AK**



CONTROL POINT LOCATIONS

ADJACENT LOT	ADJACENT	EASTING	NORTHING
FOUND W/THICK CORNER	8840.00	12274.77	341.05
FOUND 1" PIPE	8840.00	12266.77	341.05



LAYOUT PLAN
 1" = 20' 0"



baffuto
 ARCHITECTURE
 1200 W. 14TH ST. SUITE 100
 RAPID CITY, SD 57102
 TEL: 605.343.1111
 WWW.BAFFUTOARCHITECTURE.COM

07-10-09 P:\09-114\A00100\DrawSheet\09-114SDT1.dwg