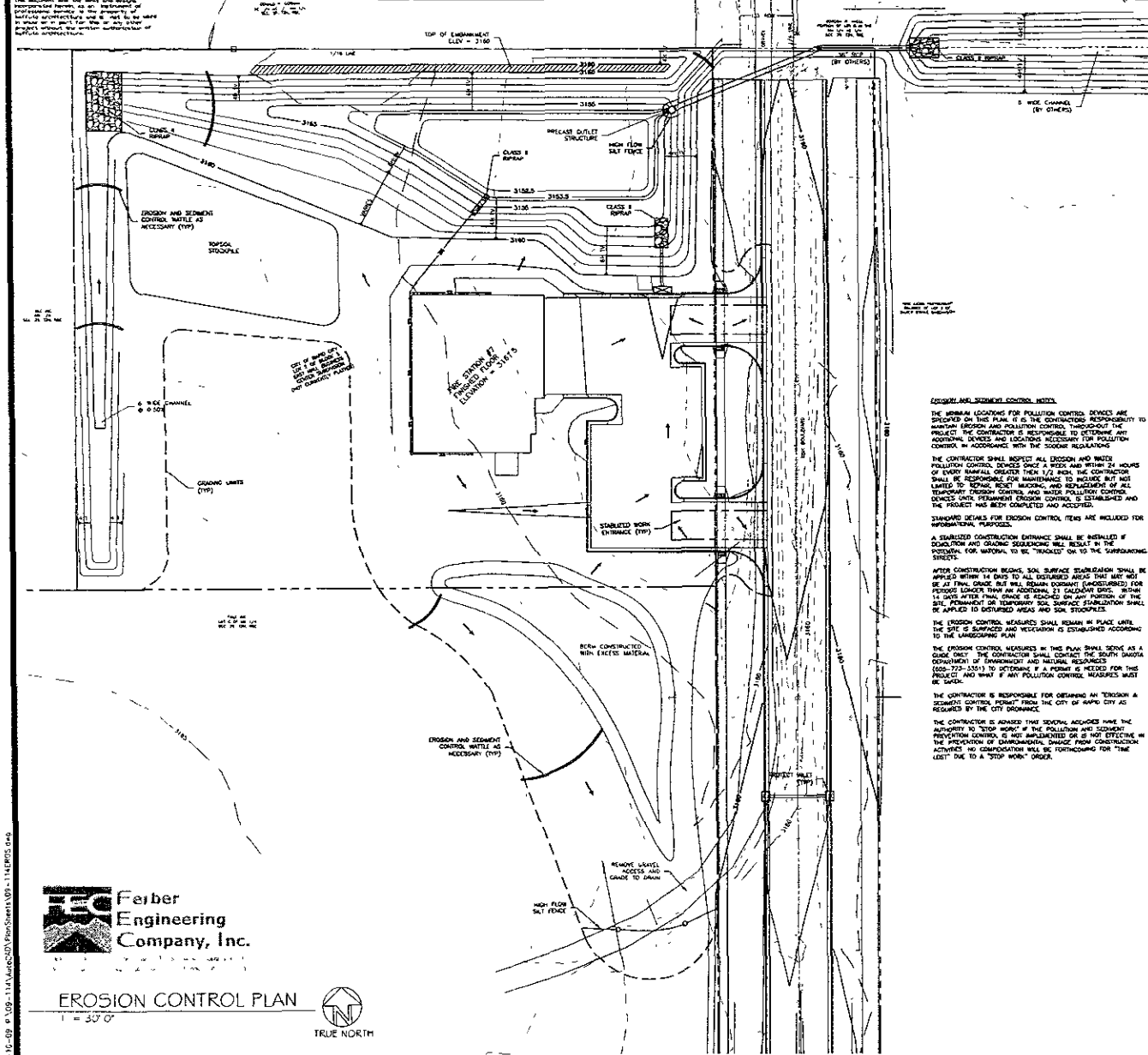


Copyright 1999 Geometric Solutions  
This document and the ideas and designs  
thereof are the property of Geometric Solutions  
and are not to be reproduced, stored in a  
retrieval system, or transmitted in any form  
or by any means, electronic, mechanical,  
photocopying, recording, or by any information  
storage and retrieval system, without the written  
permission of Geometric Solutions.



- EROSION CONTROL REPORT**
- PROJECT DESCRIPTION**  
THIS PROJECT CONSISTS OF THE CONSTRUCTION OF A NEW FIRE STATION FACILITY ALONG WITH ASSOCIATED CHANGING STATION, PATROLMAN QUARTERS AND GARRIS, STORM SEWER AND INLETS, WATER SERVICE, AND SANITARY SEWER SERVICE.
  - EXISTING SITE CONDITIONS**  
EXISTING FRAME IDENTIFIED WITH NAME CHANGES AND TRENCHES IN DRAINAGE AREAS. EXISTING (TOPOGRAPHIC TERRAIN) CONTAINS SLOPES FROM 1:1 TO 1:1.0. PROJECT IS LOCATED ENTIRELY WITHIN THE BOX EROSION CONTROL WATERLAD.
  - METHODS**  
USE APPROPRIATE METHODS AS APPROVED BY LOCAL AGENCIES (SDPH OR SPH) NEED TO REVIEW THESE PLANS FIRST.
  - BOUNDARY LINES**  
THE BOUNDARY IS ADJACENT TO AN AIR SALVAGE LOT. THE SOUTH AND WEST BOUNDARIES ARE ADJACENT TO UNDEVELOPED PRIME. THE EAST BOUNDARY IS TISH BOUNDARY.
  - SOILS**  
PRELIMINARY SOILS ARE: 1. SLOPE 1/4 CLAY AND 75% CH.
  - AREA AND VOLUME**  
DISTURBED AREA IS 3-4.2 ACRES. EARTHWORK VOLUME IS APPROXIMATE 12,300 CU YDS.
  - EROSION AND SEDIMENT CONTROL MEASURES**  
THE EROSION CONTROL PLAN SHOWS THE TYPE AND LOCATION OF THE EROSION AND SEDIMENT CONTROL MEASURES FOR THE GRADING OF THIS SITE.
  - AREA FOR STOCKPILES AND STORAGE**  
TOPSOIL STOCKPILES SHALL BE PLACED AS SHOWN ON THIS EROSION CONTROL PLAN. EROSION CONTROL MEASURES SHALL BE IMPLEMENTED AROUND THE TOPSOIL STOCKPILES/STORAGE.
  - CONSTRUCTION PHASES FOR EROSION AND SEDIMENT CONTROL**
    1. INSTALL EROSION AND SEDIMENT CONTROL MEASURES (CONSTRUCTION ENTRANCES, SALT FENCE, MULTI PROTECTION)
    2. SITE AND BUILDING CONSTRUCTION
    3. FINISH GRADE, INTERIOR FILL (GRADE ACCUMULATED SEDIMENT AND INSTALL PERMANENT EROSION CONTROL MEASURES)
  - SOIL SURFACE STABILIZATION PRACTICES**  
AFTER CONSTRUCTION BEGINS, SOIL SURFACE STABILIZATION SHALL BE APPLIED WITHIN 14 DAYS TO ALL DISTURBED AREAS THAT MAY NOT BE AT FINAL GRADE, BUT WILL REMAIN EXPOSED (UNIMPROVED) FOR PERIODS LONGER THAN AN ADDITIONAL 14 DAY LATER FINAL GRADE IS REACHED OR BOTTOM OF THE CUT. PERMANENT OR TEMPORARY SOIL SURFACE STABILIZATION SHALL BE APPLIED TO DISTURBED AREAS AND SOIL STOCKPILES.
  - PERMANENT STABILIZATION MEASURES**  
HIGH FLOW SALT FENCE WILL BE UTILIZED TO PREVENT RUN-OFF STORM WATER FROM LEAVING THE CONSTRUCTION SITE. ALL EXISTING AND CONSTRUCTED DRAINAGE FACILITIES WILL BE PROPERLY PROTECTED DURING CONSTRUCTION.
  - STORM WATER MANAGEMENT CONSIDERATIONS**  
STORM WATER DRAINING OFF THE SITE WILL BE DIRECTED TO EXISTING DRAINAGES AND WILL BE FILTERED THROUGH SEDIMENT CONTROL MEASURES ON SALT FENCE PRIOR TO LEAVING THE SITE.
  - MAINTENANCE**  
EROSION AND SEDIMENT CONTROL MEASURES SHALL BE SCHEDULED WEEKLY AND FOLLOWING ANY STORM EVENT OF 1/2" INCH OR GREATER. ALL MEASURES SHALL BE MAINTAINED IN GOOD WORKING ORDER. INSPECTION AND MAINTENANCE RECORDS SHALL BE KEPT ON THE SITE. THE DISTURBED AREAS ACHIEVE FINAL STABILIZATION. ANY REQUIRED SEDIMENT SHALL BE REMOVED TO MAINTAIN STORAGE CAPACITY.
  - SOIL CONTROL PRACTICES**  
EROSION AND SEDIMENT CONTROL MEASURES SHALL BE USED ON HAZARDOUS MATERIAL. SHALL BE REPORTED TO THE APPROPRIATE STATE OR LOCAL AGENCY. HAZARDOUS MATERIAL SHALL BE CLEANED UP IMMEDIATELY AFTER OCCURRENCE.
  - SOIL PROTECTION**  
PETROLEUM PRODUCTS ON-SITE CONSTRUCTION EQUIPMENT SHALL BE MONITORED FOR LEAKS & REPAIRS REGULAR PERIODIC MAINTENANCE.
  - REGULARLY PROPEL AND REMOVE OF GARBAGE AND WASTE MATERIAL**  
1. MAKE SURE ALL EQUIPMENT AND RELATED PROCESSES ARE WORKING PROPERLY AND PREVENTATIVE MAINTENANCE IS KEPT UP WITH ON SITE.  
2. PROPERLY RESPECT EQUIPMENT AND PROCESSES FOR LEAKS OR CONDITIONS THAT COULD LEAD TO DISCHARGES OF OILS OR OTHER LIQUIDS INTO WATER WITH ANY MATERIALS (PETROLEUM, WASTE, METALS, OR OTHERS) INTO OR ON SOIL.  
3. ASK FOR ALL CLEAN UP PROCEDURES ARE UNDERSTOOD BY EMPLOYEES. TRAINING EMPLOYEES ON PROPER CLEAN UP PROCEDURES SHALL BE IMPLEMENTED.  
4. IDENTIFY SEPARATE AREAS OF THE SITE FOR AUTO PARKING, VEHICLE REPAIRING, AND ROUTINE MAINTENANCE.  
5. CLEAN UP LEAKS, OILS, AND OTHER SPILLS IMMEDIATELY.  
6. COVER AND MAINTAIN DRAINAGE AND FLOW RECEIPTORIES.  
7. STORE CONTAINERS, DRUMS, AND TANKS AWAY FROM DIRECT TRAFFIC ROUTES TO PREVENT ACCIDENTAL SPILLS.  
8. SCHEDULING ACCORDANT TO MAINTENANCE'S INSTRUCTIONS TO AVOID DAMAGING THE COMPANIES FROM IMPROPER WEIGHT DISTRIBUTION.  
9. STORE CONTAINERS ON PALETTE OR SIMILAR DEVICE TO PREVENT COMPRESSION OF CONTAINERS THAT RESULTS FROM UNBALANCED STRESSING IN CONTACT WITH SURFACE ON THE GROUND.  
10. STORE OILS OR HAZARDOUS MATERIALS WITHIN CLOSED AREAS OR SEDIMENTATION CONTAINERS.  
11. ASSIGN RESPONSIBILITY OF HAZARDOUS MATERIAL, HAZARDOUS TO A LIMITED NUMBER OF PEOPLE WHO ARE TRAINED TO HANDLE FROM MATERIALS IN THE EVENT OF SPILLS OF ANY DANGEROUS OR HAZARDOUS MATERIAL. NOTIFY THE CITY OF RAPID CITY PUBLIC WORKS DEPARTMENT.
  - THE FOLLOWING PREVENTATIVE STRATEGIES ARE RECOMMENDED WHERE TOXIC OR HAZARDOUS FLUIDS ARE COMMONLY PRESENT**
    1. IDENTIFY ALL EQUIPMENT THAT MAY BE EXPOSED TO STORE HAZARDOUS POLLUTANTS THAT MAY BE GENERATED AND POSSIBLE SOURCES OF LEAKS OR DISCHARGES.
    2. PERFORM REGULAR MAINTENANCE OF EACH PIECE OF EQUIPMENT TO CHECK FOR PROPER OPERATION, LEAKS, MAINTENANCE AND PREVENTION OF LEAKS OR DISCHARGES (LEAKS) DEVELOP A PROCEDURE FOR SPILL REMEDIATION, CLEAN UP AND REPAIR.
    3. OBTAIN AND POSTERIZE MATERIAL OIL OR OTHER AUTOMOTIVE FLUIDS IN AN AREA AWAY FROM STORMS, STORM OR SANITARY SEWER INLETS. COLLECT SPENT FLUIDS AND KEROSENE OR DISPOSE OF THEM PROPERLY.
    4. TRAINING EMPLOYEES CLEAN UP SPILLS WITH ANY CLEAN UP METHODS (AS APPROPRIATE).
    5. MAKE SURE EMPLOYEES ARE TRAINED IN SPILL PREVENTION PRACTICES AND HOW TO TEND THEM.
  - SOIL PLAN**  
THE EROSION CONTROL PLAN SHOWS THE EROSION CONTROL DEVICES TO BE INSTALLED. THESE ITEMS SHALL BE INSTALLED AS PER CITY OF RAPID CITY STANDARD DETAILS AND SPECIFICATIONS.
  - NOTICE OF WHEN (POST) NO. 1**  
CONTRACTOR IS RESPONSIBLE FOR FILING A NOTICE OF WHEN (NO) WITH THE SURFACE WATER DEPARTMENT PROGRAM OF THE SOUTH DAKOTA DEPARTMENT OF ENVIRONMENT AND NATURE. THE PRIMARY RESPONSIBLE PARTY IS REQUIRED TO FILE A NOTICE OF FORTHWITH WITH USHW. WHEN THE SITE HAS REACHED FINAL STABILIZATION.
- OWNER'S CERTIFICATION**
- THIS EROSION AND SEDIMENT CONTROL PLAN NARRATIVE AND EROSION AND SEDIMENT CONTROL PLAN APPEARS TO FULLY MEET THE TECHNICAL CRITERIA AND THE CRITERIA FOR EROSION CONTROL AND THE REQUIREMENTS FOR THE CITY OF RAPID CITY. I UNDERSTAND THAT ADDITIONAL EROSION AND SEDIMENT CONTROL MEASURES MAY BE NEEDED IF UNPREDICTED EROSION PROBLEMS OCCUR OR IF THE SUBMITTED PLAN DOES NOT FUNCTION AS INTENDED. I ACCEPT THE REQUIREMENTS OF THIS PLAN SHALL BE WITH THE LAND USE DEPARTMENT OF THE RESPONSIBLE PARTY UNIT, SUCH THAT AS THE PLAN IS PROPERLY COMPLETED, MONITORED OR MOVED.
- CITY OF RAPID CITY (OWNER) \_\_\_\_\_ DATE \_\_\_\_\_
- (GENERAL CONTRACTOR) \_\_\_\_\_ DATE \_\_\_\_\_
- ENGINEER'S CERTIFICATION**
- I HEREBY CERTIFY THAT THESE PLANS WERE PREPARED BY ME OR UNDER MY DIRECT SUPERVISION AND THAT I AM A DULY REGISTERED ENGINEER UNDER THE LAWS OF SOUTH DAKOTA.
- JOHN W. BECK, P.E. (ENGINEER) \_\_\_\_\_ DATE \_\_\_\_\_

2.3

Sheet Number

FD09-1767

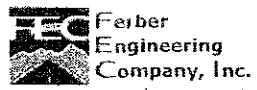
Project Number

Rapid City Fire Department  
FIRE STATION #7  
CITY PROJECT NUMBER FD09-1767  
Rapid City South Dakota

Drawn By: AK  
Checked By: JLV



*bafuto*  
ART & ARCHITECTURE  
1114 W. 10TH ST. SUITE 101  
RAPID CITY, SD 57102  
TEL: 605.343.1114  
WWW.BAFUTO.COM



EROSION CONTROL PLAN  
1" = 30'

