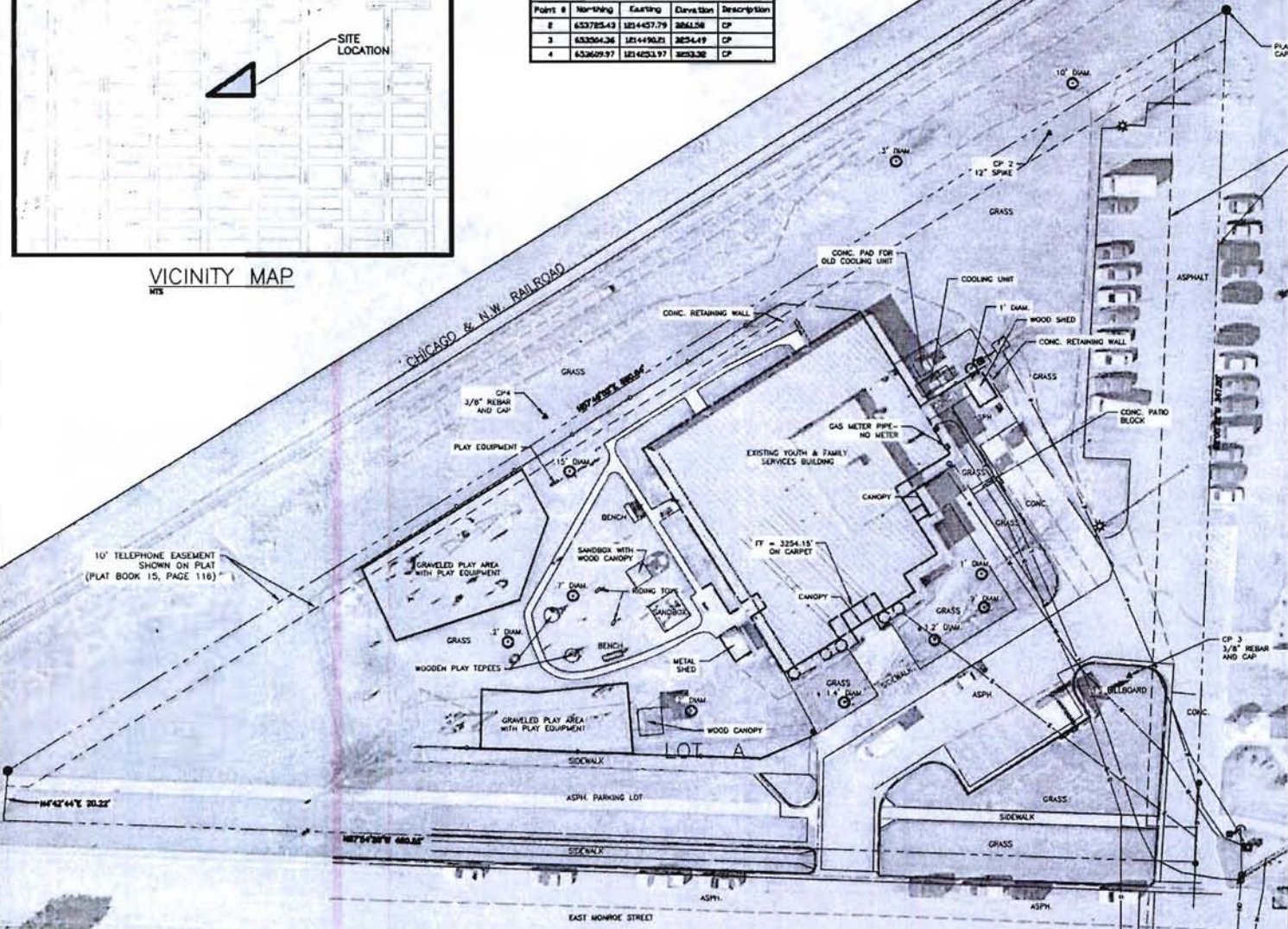


VICINITY MAP

LEGAL DESCRIPTION: (410 E. MONROE ST.) LOT A AND THE VACATED NORTH 14 FEET OF EAST MONROE STREET CONTIGUOUS TO SAID LOT A, BLOCK 12, WISE'S ADDITION, T2N, R6E, SECTION 31, 8th, RAPID CITY, PENNINGTON COUNTY, SOUTH DAKOTA.

CONTROL POINTS			
Point #	Northing	Easting	Description
2	653785.43	1214437.79	2864.58 CP
3	653804.36	1214490.21	2825.419 CP
4	653609.97	1214253.97	2823.38 CP



- LEGEND:
- — — — — EXISTING OVERHEAD UTILITIES
 - — — — — EXISTING UTILITY POLE
 - — — — — EXISTING STREET LIGHT
 - — — — — EXISTING ANCHOR
 - — — — — EXISTING FIBER OPTIC TELEPHONE
 - — — — — EXISTING TELEPHONE LINE
 - — — — — EXISTING TELEPHONE BOX
 - — — — — EXISTING UNDERGROUND ELECTRIC
 - — — — — EXISTING SANITARY SEWER
 - — — — — EXISTING WATER
 - — — — — EXISTING STORM SEWER
 - — — — — EXISTING BARB WIRE FENCE
 - — — — — EXISTING CHAIN LINK FENCE
 - — — — — EXISTING GUARD RAIL
 - — — — — EXISTING DRAINAGE DITCH
 - — — — — EXISTING BUILDING EDGE
 - — — — — EXISTING PIPE CULVERT
 - — — — — EXISTING SINGLE SIGN
 - — — — — EXISTING DOUBLE SIGN
 - — — — — EXISTING WATER GATE VALVE
 - — — — — EXISTING FIRE HYDRANT
 - — — — — EXISTING SANITARY SEWER MANHOLE
 - — — — — EXISTING WATER CURB STOP
 - — — — — EXISTING SEWER CLEANOUT
 - — — — — EXISTING TREE
 - — — — — EXISTING IRRIGATION
 - — — — — EXISTING PROPANE TANK
 - — — — — EXISTING POST INDICATOR VALVE
 - — — — — EXISTING SIOUX FALLS INLET
 - — — — — EXISTING TYPE B INLET
 - — — — — EXISTING GRATE INLET
 - — — — — FOUND SURVEY MONUMENT
 - — — — — CONTROL POINT (CP)

PRELIMINARY
NOT FOR CONSTRUCTION



517 7th Street Rapid City, SD 57701
 ph 605.342.6470 for 605.342.2377
 www.front.biz

FRONT DESIGN, INC.
 ARCHITECTURE & ENGINEERING
 605.342.6470

YOUTH AND FAMILY SERVICES
 11-6-19 SUBMITTAL 401 E. MONROE

JOB NUMBER: 09-1812.01
 DATE: 07/10/09

RAPID CITY, SOUTH DAKOTA

REVISIONS

TITLE
 TOPOGRAPHICAL SURVEY (EXISTING)
 SHEET
 1