

Table of Contents

- Location Map
- Sign Code Data
- Site Plan and Photo Key
- Site Photos
- Recommendation Drawings

Rapid City-Rushmore Plaza

505 North Fifth St
 Rapid City, SD 57701
 Site Number: SD03378
 Inn Code: RAPCC

Location Map



Sign Code Data

Codes Contact Information

Zoning classification: Civic Center District
 Jurisdictional authority: Rapid City Building Inspectors
 Address: 300 Sixth Street, Rapid City, SD 57701
 Contact: Kurt Bechtel
 Phone #: 605-394-4157

Ground Signs

Number of signs allowed: 1 per street frontage
 Maximum allowable area: 1.5 sq ft for the first 25 ft of lot frontage and .5 sq ft for the remaining lot frontage, Max: Not Stipulated
 Maximum height: 45 ft
 Minimum height: Not Stipulated
 Setback requirements: Front: signs not 10 ft clear from grade shall be setback 10 ft from property line, Side: signs not 10 ft clear from grade shall be setback 10 ft from property line

Wall Signs

Number of signs allowed: Not Stipulated
 Maximum allowable area: 1.5 sq ft for the first 25 ft of lot frontage and .5 sq ft for the remaining lot frontage., Max Allowable: See 1A, Transferable: Yes
 Maximum height: May not extend above or beyond plane of wall where sign is placed

Directional Signs

Number of signs allowed: As Needed
 Maximum allowable area: 5 sq ft
 Maximum height: Not Stipulated
 Is logo allowed?: Yes

General Permitting Requirements

Permit required for face replacements?: No
 Permit required for door/window vinyl?: No
 Permit required for plaques: No
 Temporary signs/banners allowed?: Not Allowed
 Contractors license required?: Yes
 Sealed sign engineering drawings required?: Yes
 Site plan required?: Yes
 Building elevation drawings required?: Yes

RECEIVED

JUL 1 0 2009

Rapid City Growth
 Management Department



InterContinental Hotels Group

InterContinental Hotels Group
 Three Ravinia Drive
 Suite 100
 Atlanta, GA 30346-2149

Signage Survey

December 23, 2008, Rev02

Rapid City-Rushmore Plaza

505 North Fifth St
 Rapid City, SD 57701
 Site Number: SD03378
 Inn Code: RAPCC

Table of Contents & Sign Code Data



sign management consultants, inc




2501 pennmar place dr., suite 201
 nashville, tn 37214
 phone 615 885 1661
 fax 615 885 1703
 web www.signmgmt.com

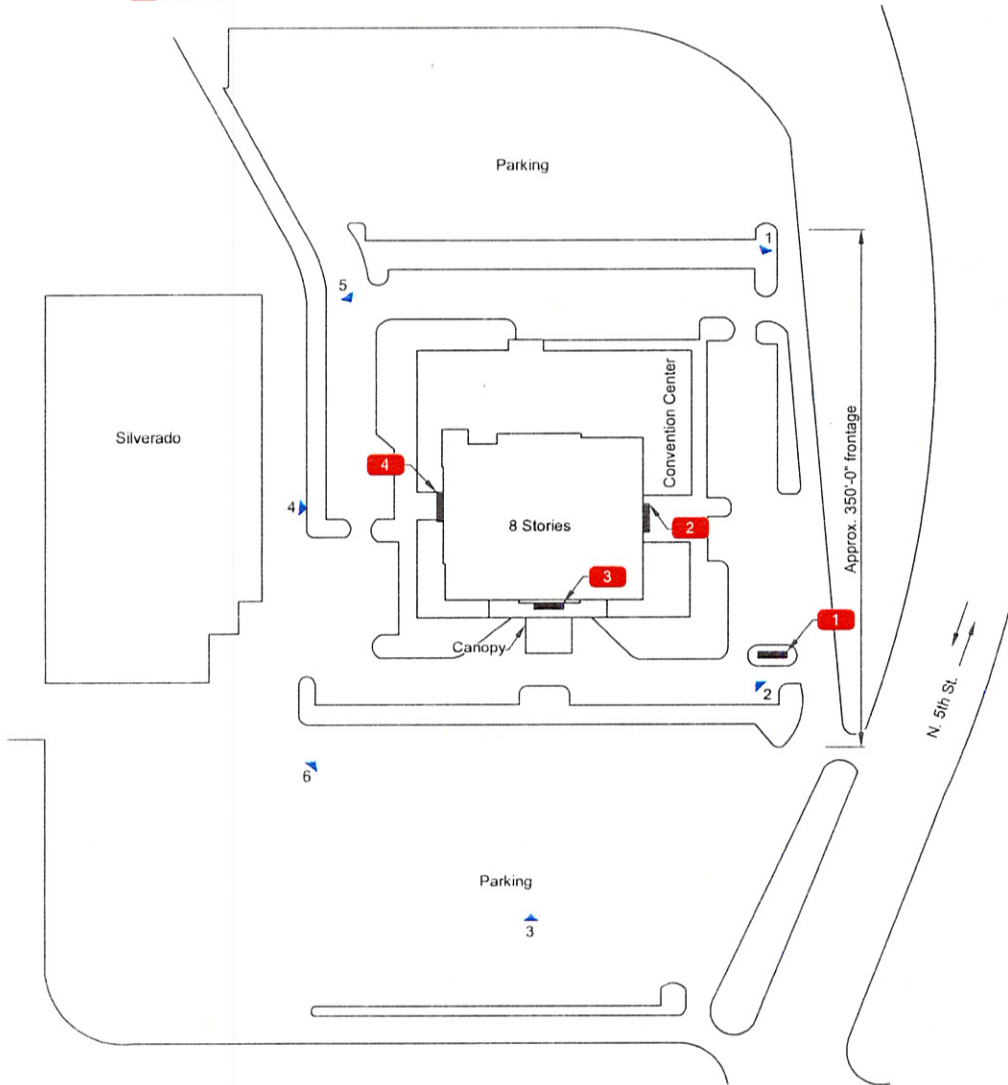
Graphics shown are representative only. Use only approved artwork and graphics standards for face decoration

This is an original unpublished design, created by Sign Management Consultants, Inc. These drawings shall not be used except for the project in which they were developed without owner approval. These documents are for design intent purposes and shall not be interpreted as a final design. The product manufacturer shall be responsible for all structural, electrical, and mechanical engineering.







Legend:





-  Camera Position
-  1 Photograph Number
-  Sign Number



Existing Signs

-  HI-18 Pylon Sign
-  40 ft. Script, Single-Line
-  22 ft. Script, Nested
-  40 ft. Script, Single-Line

Recommendations

-  Remove and Replace with New P92-27 Pylon, 8'-6" x 12'-2", 26'-11" Overall Ht
-  Remove and Replace with New L-LM-7D Building Letters, Linear, w/7'-1" Monogram, Dark Faces
-  Remove and Replace with New L-LM-4D Building Letters, Linear, w/4'-1" Monogram, Dark Faces
-  Remove and Replace with New L-LM-7D Building Letters, Linear, w/7'-1" Monogram, Dark Faces



InterContinental Hotels Group

InterContinental Hotels Group
 Three Ravinia Drive
 Suite 100
 Atlanta, GA 30346-2149

Signage Survey

December 23, 2008, Rev02

Rapid City-Rushmore Plaza

505 North Fifth St
 Rapid City, SD 57701
 Site Number: **SD03378**
 Inn Code: **RAPCC**

Site Plan and Photo Key
 Scale: N.T.S.



sign management consultants, inc.

2501 penmeter place dr , suite 201
 nashville, tn 37214
 phone 615.885.1661
 fax 615.885.1703
 web www.signmgmt.com

RECEIVED

JUL 10 2009

Rapid City Growth
 Management Department

Graphics shown are representative only. Use only approved artwork and graphics standards for face decoration

This is an original unpublished design, created by Sign Management Consultants, Inc. These drawings shall not be used except for the project in which they were developed without owner approval. These documents are for design intent purposes and shall not be interpreted as a final design. The product manufacturer shall be responsible for all structural, electrical, and mechanical engineering



Photo 1
View approaching hotel on N. Fifth Street.



Photo 2
View entering hotel from N. Fifth Street.



Photo 3
View of the front of hotel from parking area.



Photo 4
View of rear facade of hotel.



Photo 5
View of rear of hotel.



Photo 6
View of hotel from rear parking.



Intercontinental Hotels Group
Three Ravinia Drive
Suite 100
Atlanta, GA 30346-2149

Signage Survey

December 23, 2008, Rev02

Rapid City-Rushmore Plaza

505 North Fifth St
Rapid City, SD 57701
Site Number: SD03378
Inn Code: RAPCC

Site Photos

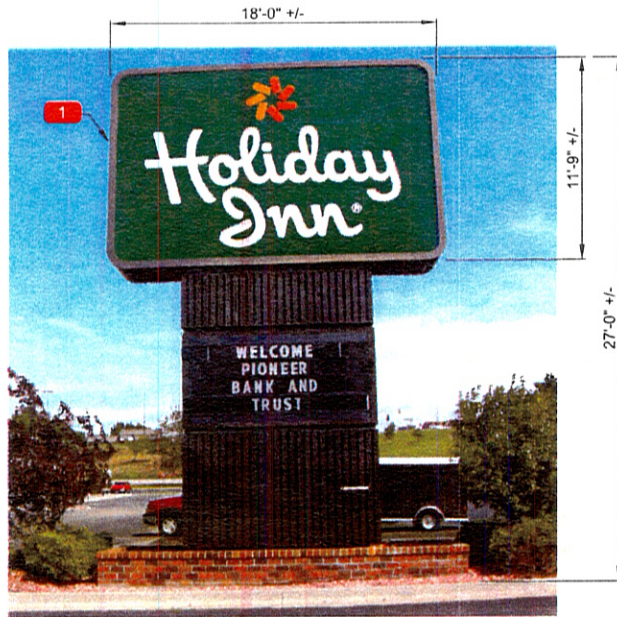


sign management consultants, inc.

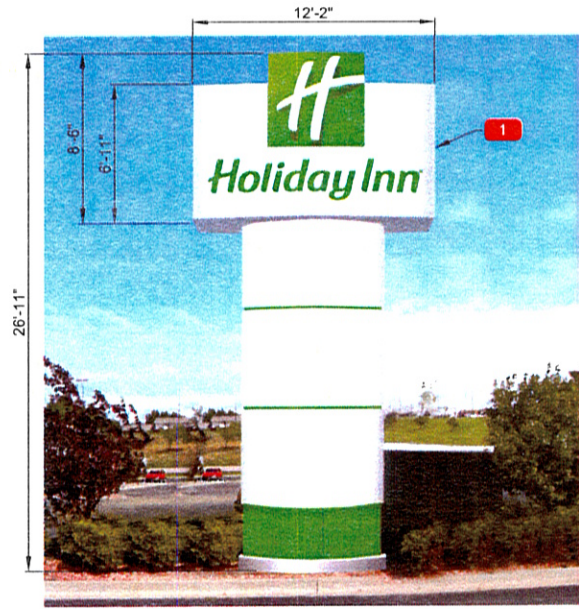
2501 perimeter place dr., suite 201
nashville, tn 37214
phone 615 885 1661
fax 615 885 1703
web www.signmgmt.com

Graphics shown are representative only. Use only approved artwork and graphics standards for face decoration.

This is an original unpublished design, created by Sign Management Consultants, Inc. These drawings shall not be used except for the project in which they were developed without owner approval. These documents are for design intent purposes and shall not be interpreted as a final design. The product manufacturer shall be responsible for all structural, electrical, and mechanical engineering.



Existing Double-Faced Internally Illuminated HI-18 Pylon Sign
(212 sq. ft.)



Proposed Double-Faced Internally Illuminated P-92 Pylon Sign
(92 sq. ft.)



Existing Internally Illuminated 40 ft. Script Sign
(Approx. 275 sq. ft.)



Proposed Internally Illuminated Linear Building Letters w/ 7'-1" Monogram
(148 sq. ft.)



Intercontinental Hotels Group
Three Ravinia Drive
Suite 100
Atlanta, GA 30346-2149

Signage Survey

December 23, 2008, Rev02

Rapid City-Rushmore Plaza

505 North Fifth St
Rapid City, SD 57701
Site Number: SD03378
Inn Code: RAPCC

Recommendation Drawing



sign management consultants, inc.

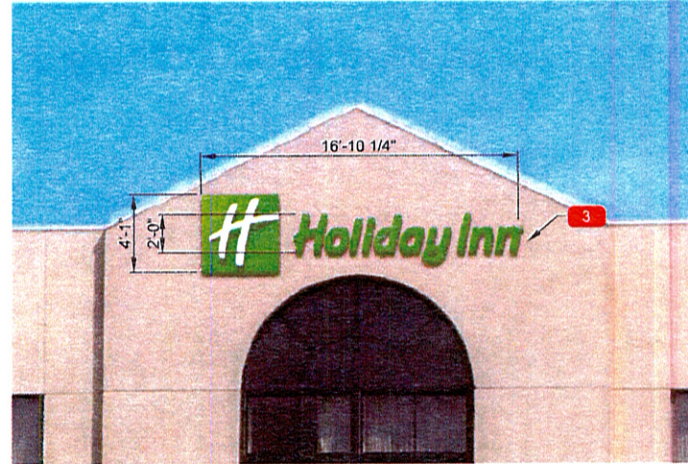
2501 pentwater place dr., suite 201
nashville, tn 37214
phone 615 885 1661
fax 615 885 1703
web www.signmgmt.com

Graphics shown are representative only. Use only approved artwork and graphics standards for face decoration

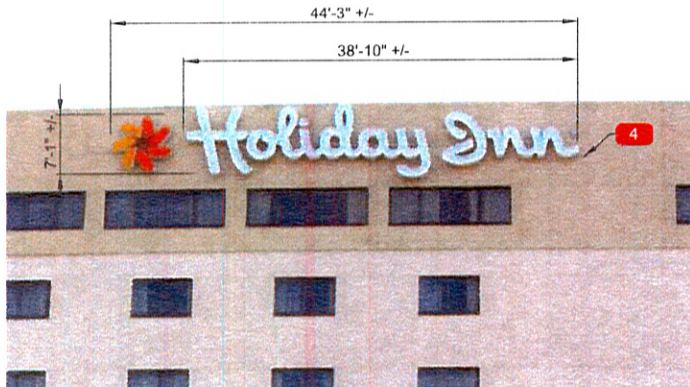
This is an original unpublished design, created by Sign Management Consultants, Inc. These drawings shall not be used except for the project in which they were developed without owner approval. These documents are for design intent purposes and shall not be interpreted as a final design. The product manufacturer shall be responsible for all structural, electrical, and mechanical engineering.



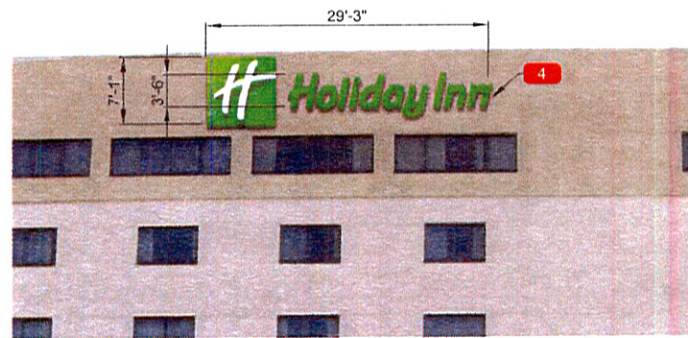
Existing Internally Illuminated 22 ft. Script Sign
(Approx. 135 sq. ft.)



Proposed Internally Illuminated Linear Building Letters w/ 4'-1\"/>



Existing Internally Illuminated 40 ft. Script Sign
(Approx. 275 sq. ft.)



Proposed Internally Illuminated Linear Building Letters w/ 7'-1\"/>



InterContinental Hotels Group
Three Ravinia Drive
Suite 100
Atlanta, GA 30346-2149

Signage Survey

December 23, 2008, Rev02

Rapid City-Rushmore Plaza

505 North Fifth St
Rapid City, SD 57701
Site Number: **SD03378**
Inn Code: **RAPCC**

Recommendation Drawing



sign management consultants, inc

2501 penmeter place dr, suite 201
nashville, tn 37214
phone 615 885 1661
fax 615 885 1703
web www.signmgmt.com

Graphics shown are representative only. Use only approved artwork and graphics standards for face decoration

This is an original unpublished design, created by Sign Management Consultants, Inc. These drawings shall not be used except for the project in which they were developed without owner approval. These documents are for design intent purposes and shall not be interpreted as a final design. The product manufacturer shall be responsible for all structural, electrical, and mechanical engineering