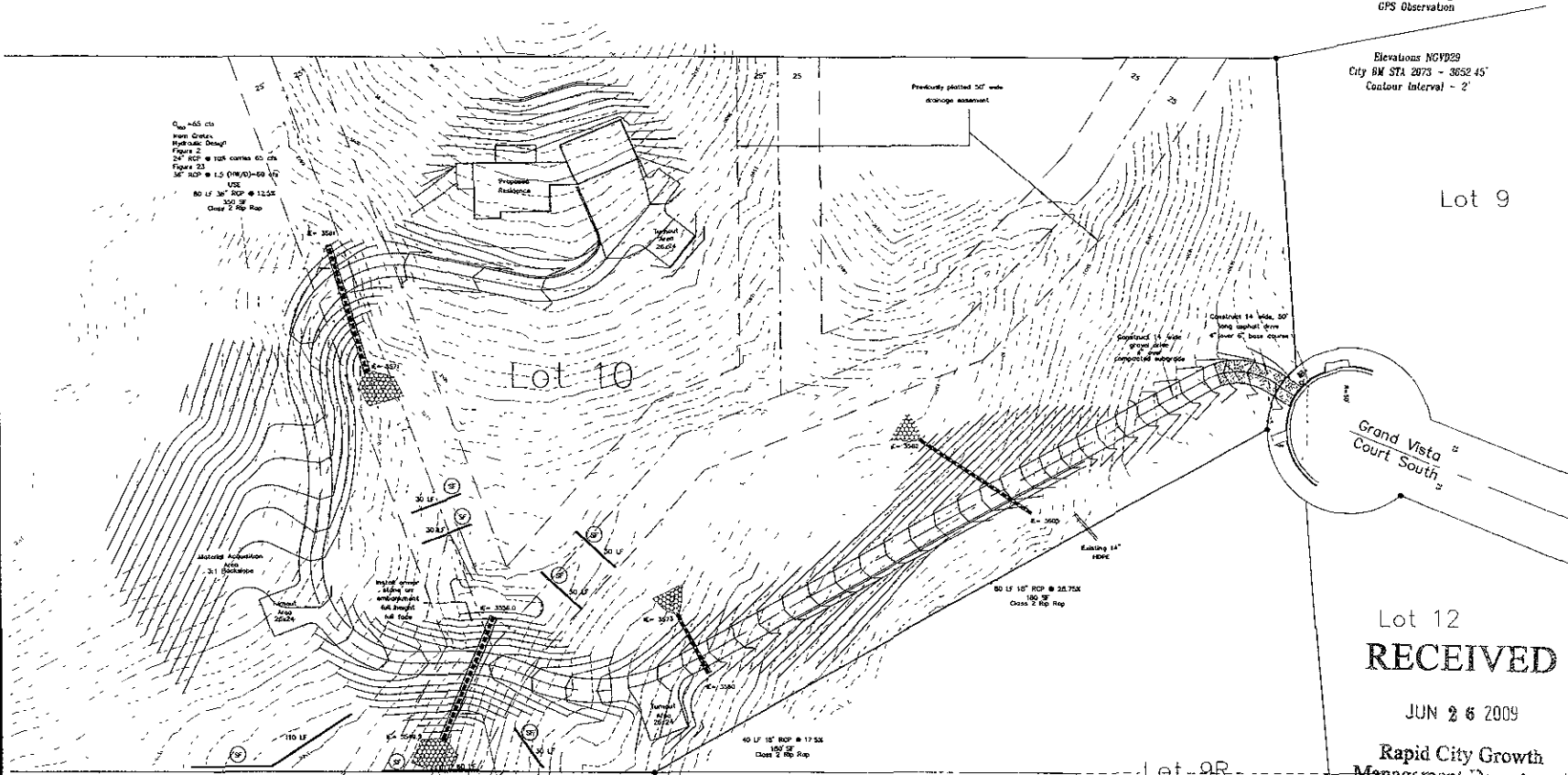


Elevations NGVD29  
City BM STA 2073 - 3652.45'  
Contour Interval - 2'



$C_{100} = 455$  cfs  
Main Outlet  
Hydraulic Design  
Figure 2  
24" RCP @ 12% corner 60 cfs  
Figure 23  
18" RCP @ 1.0 (18"/D) = 50 LF  
USE  
80 LF 36" RCP @ 12.5%  
150 SF  
Clear 2' RCP Rap

$C_{100} = 153$  cfs  
Main Outlet  
Hydraulic Design  
Figure 2  
27" RCP @ 8% corner 85 cfs  
Figure 23  
18" RCP @ 2.0 (18"/D) = 150 LF  
USE  
80 LF 48" RCP @ 8%  
110 SF  
Clear 2' RCP Rap

Lot 6  
Kepp Hts  
Subdivision No. 2

Lot 8  
Kepp Hts Subdivision No. 2

Lot 12  
**RECEIVED**

JUN 26 2009

Rapid City Growth  
Management Department

NOTES

1. High flow spill fence shall be installed at the locations shown hereon and be maintained in accordance with the City of Rapid City Stormwater Quality Manual (2007). Erosion and Sediment Control measures shall remain in place until vegetation is established.
2. All installed ungrazed areas shall be seeded and maintained until vegetation is established.
3. HDPE pipe (ADS N-12) may be substituted for the RCP pipe specified hereon at equal size. Use of CMP will necessitate pipe re-sizing.

**Fisk Land Surveying & Consulting Engineers, Inc.**  
1025 4th Street, Suite 200  
Rapid City, SD 57701  
(605) 345-8336 (cell) (605) 341-1172 (fax)  
fisk@fiskland.com

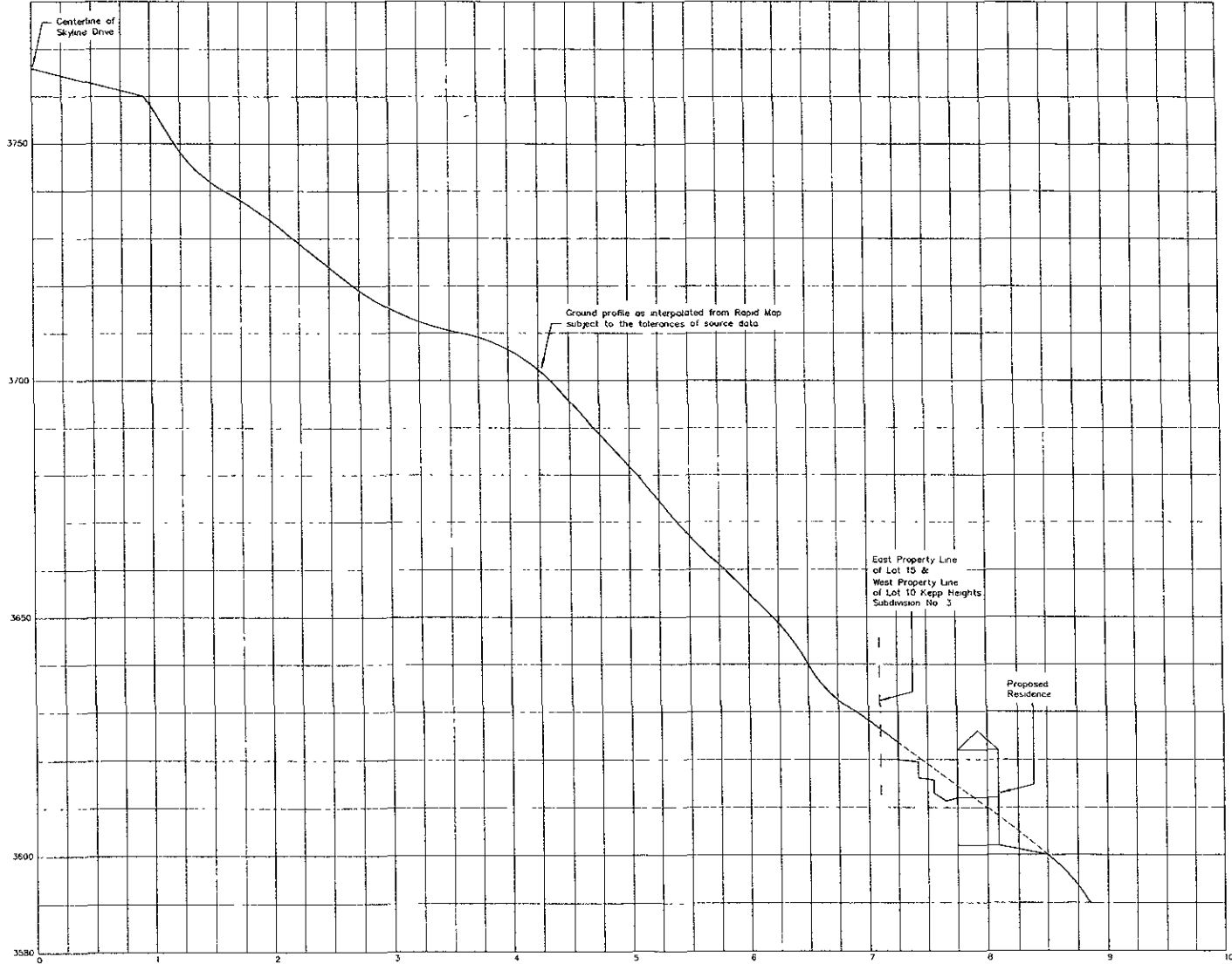
The information herein is a representation of the information received from the client and is not intended to be a warranty or guarantee of accuracy or to be relied upon for any other purpose at any time except as stated.

Planned Development Amendment  
Lot 10 of Kepp Heights Subdivision No. 3  
located in the NW 1/4 of Section 11,  
T1N, R7E, B1M,  
Rapid City, Pennington County, South Dakota

Surveyed by:	BL
Date:	5/09
Drawn by:	RWF
Date:	5/25/09
Checked by:	WF
Revisions:	

Project No.  
09-06-05  
**Grading & Drainage Plan**





RECEIVED

JUN 26 2008

Rapid City Growth  
Management Department

Planned Development Amendment  
Lot 10 of Kepp Heights Subdivision No 3  
located in the NW 1/4 of Section 11,

Rapid City, Pennington County, South Dakota

Surveyed by	BL
Date	6/29
Drawn by	RHW
Date	6/25/09
Checked by	W
Revisions	

Project No  
09-06-05

Viewshed  
Profile

Fisk Land Surveying &  
Consulting Engineers, Inc.  
1022 Main Street - P.O. Box 8154  
Rapid City, South Dakota 57702-0154 (R)  
(605) 791-1111  
www.fisk-engineers.com

The information herein is a computer-generated representation of the data and is not to be used for any purpose other than that for which it was prepared. It is not to be used for any purpose other than that for which it was prepared. It is not to be used for any purpose other than that for which it was prepared.

