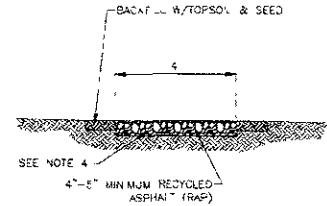
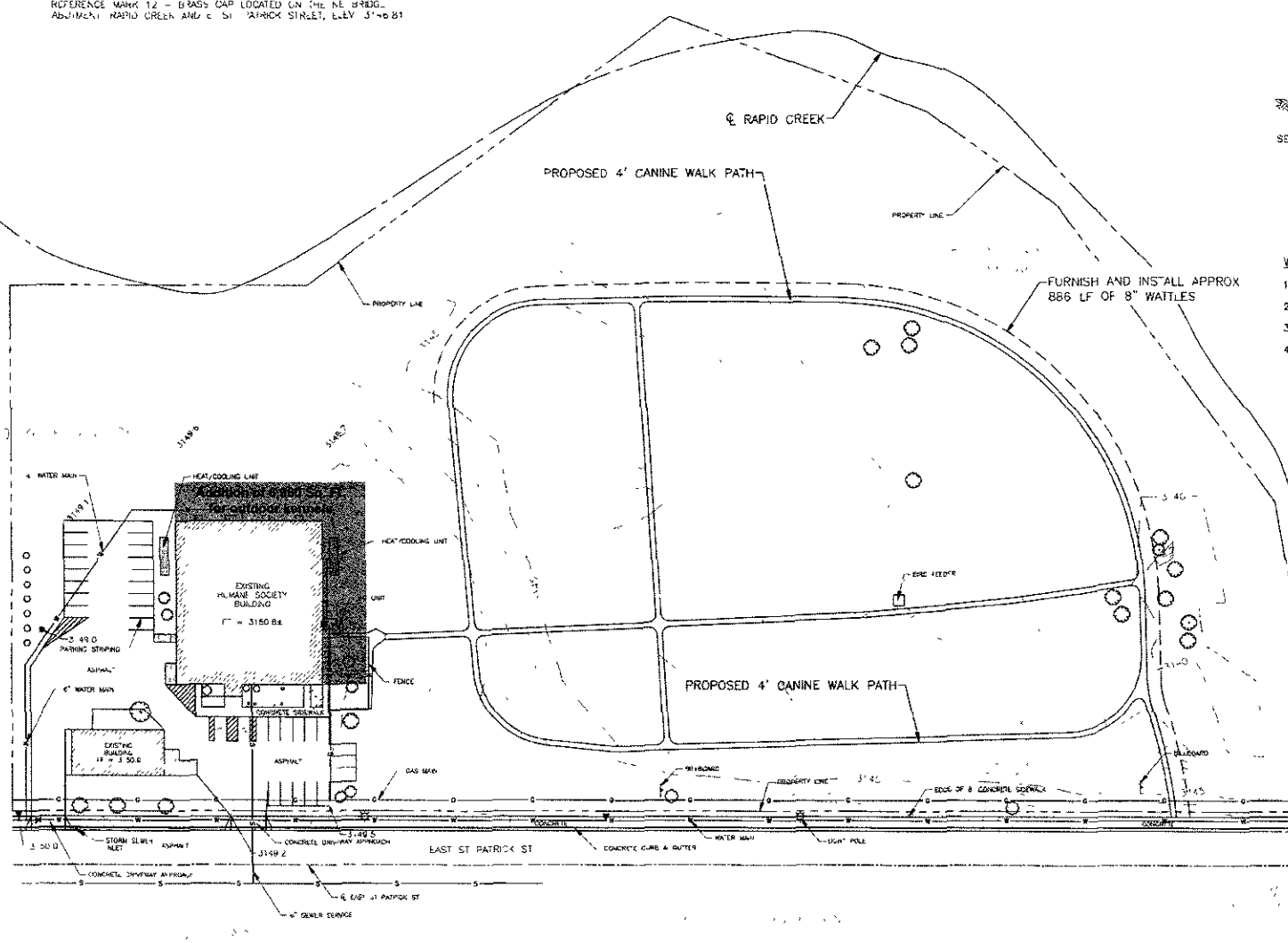


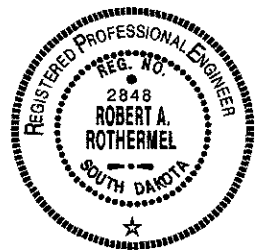
OWNER HUMANE SOCIETY OF BLACK HILLS  
 LEGAL LOT 1 IN THE SE1/4 SW1/4 AND THE SW1/4 SE1/4 0" SECTION 5 T1N 18E  
 NOTE THE SITE PLAN SHOWS THE FLOOD PLAIN INFORMATION AS DEPICTED ON THE FLOOD INSURANCE RATE MAP (FIRM) PANEL NUMBER 465420 0008 FIRM REVISED 7/31/04 (1996)  
 REFERENCE MARK 12 - BRASS CAP LOCATED ON THE NE BRIDGE ABUTMENT RAPID CREEK AND E ST PATRICK STREET, ELEV 3'40.81



CANINE WALK PATH SECTION  
 N.T.S.

WALK PATH NOTES

- 1 REMOVE FROM THE SITE ALL EXCESS MATERIAL
- 2 STRIP VEGETATION AND TOPSOIL
- 3 WALK PATH TO MATCH EXISTING GROUND
- 4 INSTALL SOIL STERILANT TO SUBGRADE BENEATH ASPHALT PATH PER MANUFACTURER'S RECOMMENDATIONS.



HUMANE SOCIETY OF BLACK HILLS  
 1820 E. ST. PATRICK STREET  
 RAPID CITY, SOUTH DAKOTA

SCS NUMBER: 08-1474.001  
 DATE: 08/31/08

SITE PLAN

SHEET 1

517 7th street rapid city sd 57701  
 ph 605 342 9470 fax 605 342 2377  
 www.afronti.biz  
 ARCHITECTURE | ENGINEERING  
 GIS | SURVEYING

Copyright 2008. All rights reserved. No part of this document may be reproduced, stored in a retrieval system, or transmitted in any form or by any means, without permission from AFRONTI DESIGN, INC.