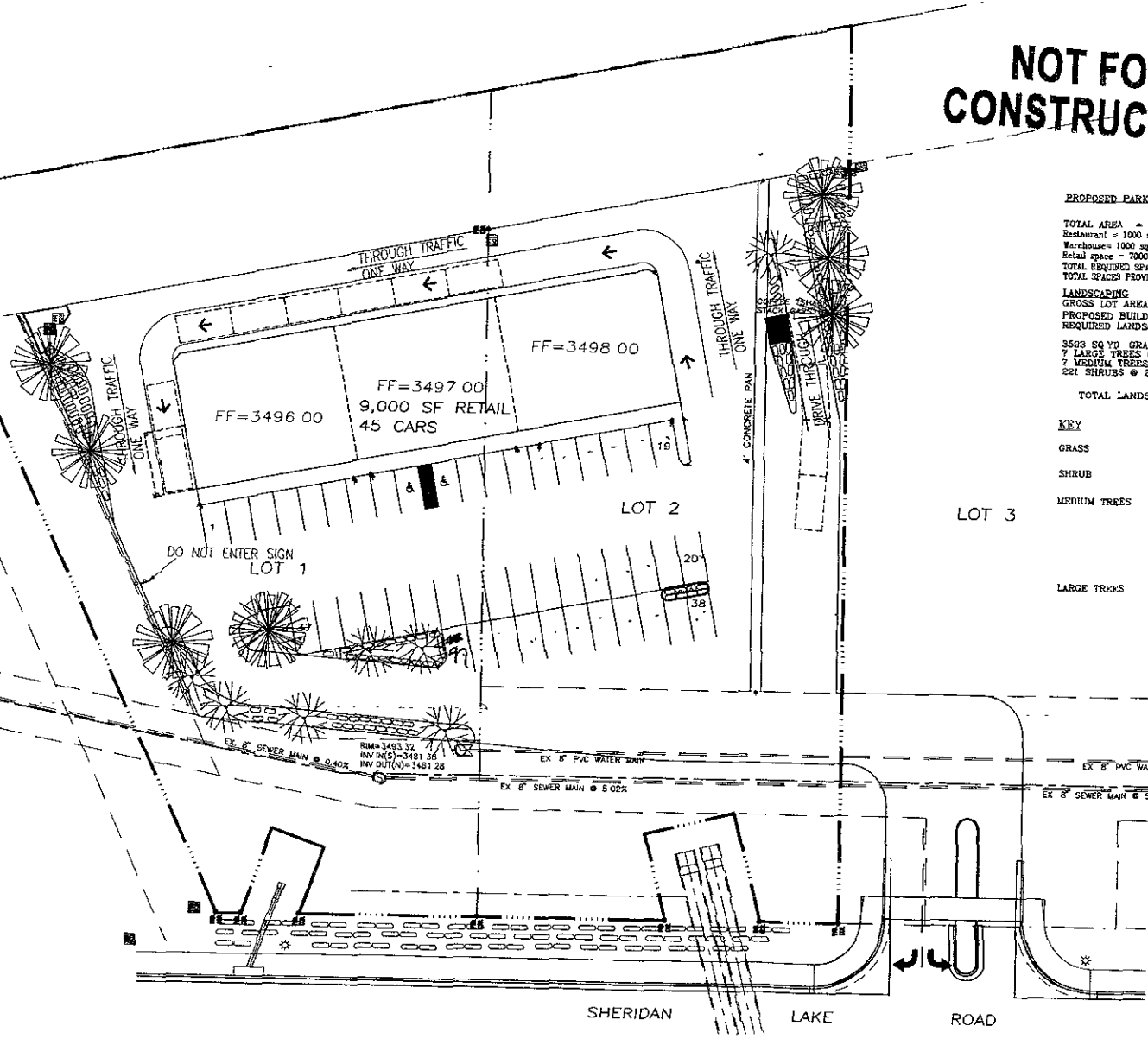
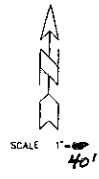


**NOT FOR CONSTRUCTION**



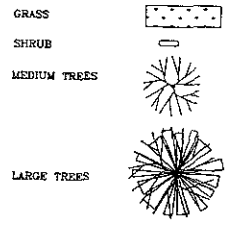
**PROPOSED PARKING**

TOTAL AREA = 9000 S.F.  
 Restaurant = 1000 square feet @ 11 parking Spaces per 1000 square feet = 11 Spaces  
 Warehouse = 1000 square feet @ 0.25 parking Spaces per 1000 square feet = 0.25 Spaces  
 Retail space = 7000 square feet @ 5 parking Spaces per 1000 square feet = 35 Spaces  
 TOTAL REQUIRED SPACES = 46.25  
 TOTAL SPACES PROVIDED = 47 spaces

**LANDSCAPING**

GROSS LOT AREA = 85,023 SQ FT  
 PROPOSED BUILDING = 9,000 SQ FT  
 REQUIRED LANDSCAPING POINTS = 78,023  
 3500 SQ YD GRASS @ 10 POINTS = 35,000  
 7 LARGE TREES @ 2,000 POINTS = 14,000  
 7 MEDIUM TREES @ 1,000 POINTS = 7,000  
 221 SHRUBS @ 250 POINTS = 55,250  
 TOTAL LANDSCAPING POINTS = 76,250

**KEY**



**PRELIMINARY**

PROJECT / 03-0076	PROJECT LOCATION
ISSUED / 02/22/04	114 S.W. 5TH BLVD #22
DESIGN DATE / 12/03	CITY OF MIAMI CITY
DATE / 02/22/04	REVISION / 02/22/04
DATE / 12/03	REVISION / 02/16/04
DATE /	REVISION / 02/16/04

**AUTUMN HILLS PLAZA  
 LOTS 1 & 2  
 LANDSCAPING PLAN - PHASE ONE**

SHEET  
 3  
 9

**D.D.I. DREAM DESIGN INTERNATIONAL, INC.**  
 PROFESSIONAL STRUCTURAL & CIVIL ENGINEERING CONSULTANTS  
 600 MARSH CTR. ST. SUITE 4, MIAMI, FL 33136  
 TEL: 305-586-3339 FAX: 305-586-3344 EMAIL: engineers@dreamdesignplus.com