

**F.M.G., Inc.**  
 2700 Bluffs Road  
 Rapid City, SD 57702-0017  
 Phone: 605-348-4422  
 www.fmgengr.com

---

**NOT FOR CONSTRUCTION**

---

Date:	11-25
Designed By:	JHR/RS
Drawn By:	JHR/RS
Checked By:	RS
Date:	MAY 2009
Project No.:	MAY 2009
Author of Job No.:	OS 8430.08
Submitted by:	F.M.G.
Scaling Date:	11-25
Scale:	AS SHOWN

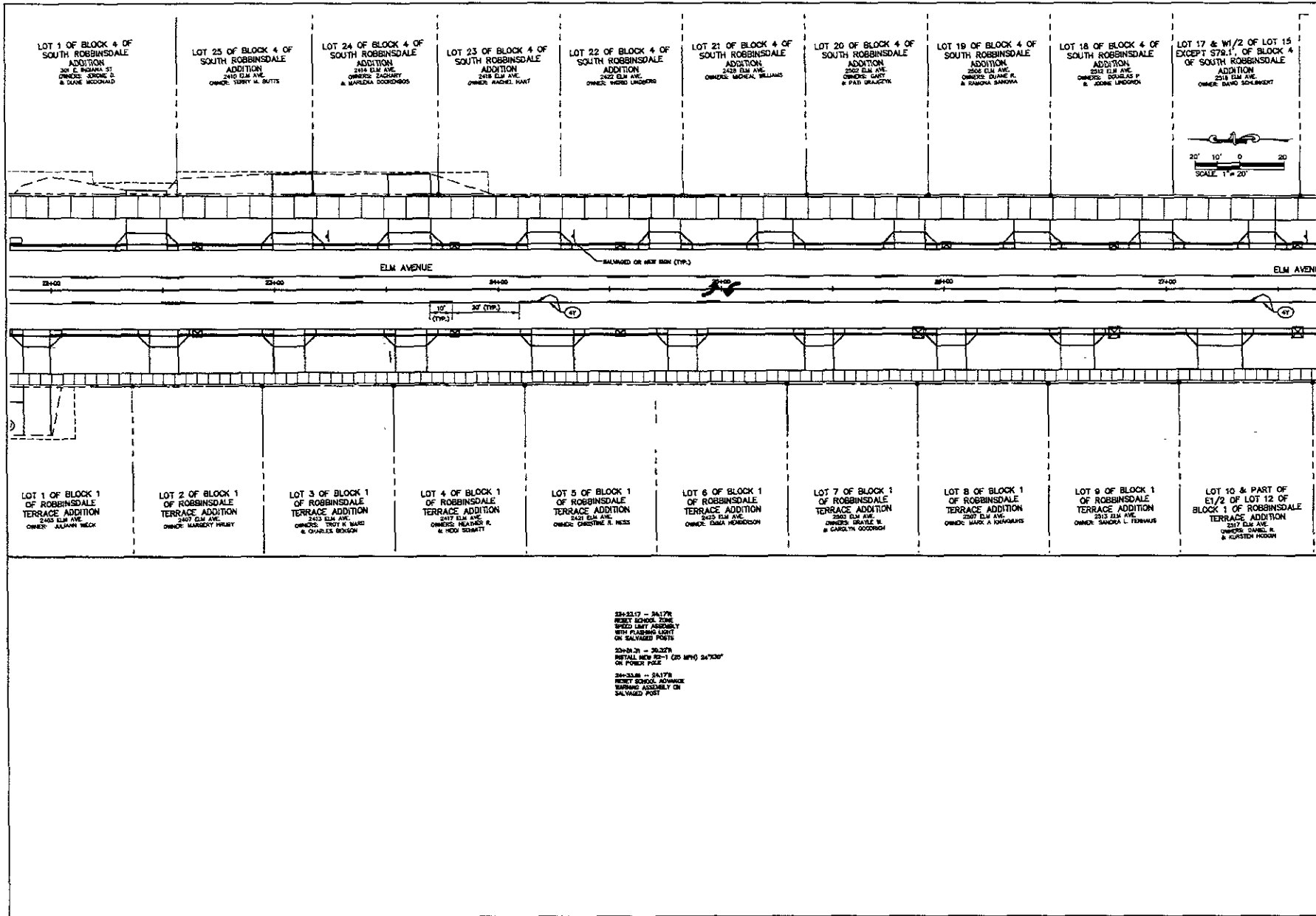
---

**ELM AVENUE RECONSTRUCTION - PHASE 3**  
**E. TALLEY STREET TO E. INDIANA STREET**

---

Sheet No. **42** of **63**

- 17-4317 - 4217R  
RESET STOP SIGN AND STREET NAME ASSEMBLY INCLUDING POST
- 17-4317 - 2417R  
RESET SCHOOL ADVANCE SIGNAGE ASSEMBLY ON SALVAGED POST
- 18-40.00 - 4217R  
INSTALL NEW 21-1 (STOP) 24"X30" AND STREET NAME ASSEMBLY ON NEW POST
- 18-42.00 - 2417R  
RESET SCHOOL SIGN SPECIES LEFT ASSEMBLY WITH FLASHING LIGHT ON SALVAGED POST
- 18-42.00 - 2417R  
INSTALL NEW 23-1 (25 MPH) 24"X30" ON NEW POST
- 20-42.00 - 2417R  
RESET SCHOOL CROSSING ARROW AND BUS SCHEDULE ON NEW POST
- 21-41.00 - 4217R  
INSTALL NEW 21-1 WITH STREET NAME ASSEMBLY AND NEW POST
- 21-42.00 - 5047R  
INSTALL NEW 21-1 (STOP) 24"X30" ON NEW POST
- 21-42.00 - 1371R  
INSTALL NEW 23-1 LEFT LANE THROUGH AND LEFT TURN OR ABE RIGHT LANE RIGHT TURN 24x17 ON NEW POST
- 21-42.00 - 2417R  
RESET SCHOOL CROSSING ARROW AND BUS SCHEDULE ON SALVAGED POST
- 21-42.00 - 2417R  
INSTALL 2-4"X3" SIGN POST REFLECTORS ON POST
- 21-42.00 - 2310T  
RESET BUS STOP SIGN (COORDINATE WITH PLANNING DEPARTMENT)



Prepared For: Public Works Department  
Engineering Division

**F M G, Inc.**  
2700 Oakdale Blvd.  
Rapid City, SD 57702-0017  
(605) 343-4100 FAX (605) 343-4222  
www.fmgengineering.com

Project No. 15-25

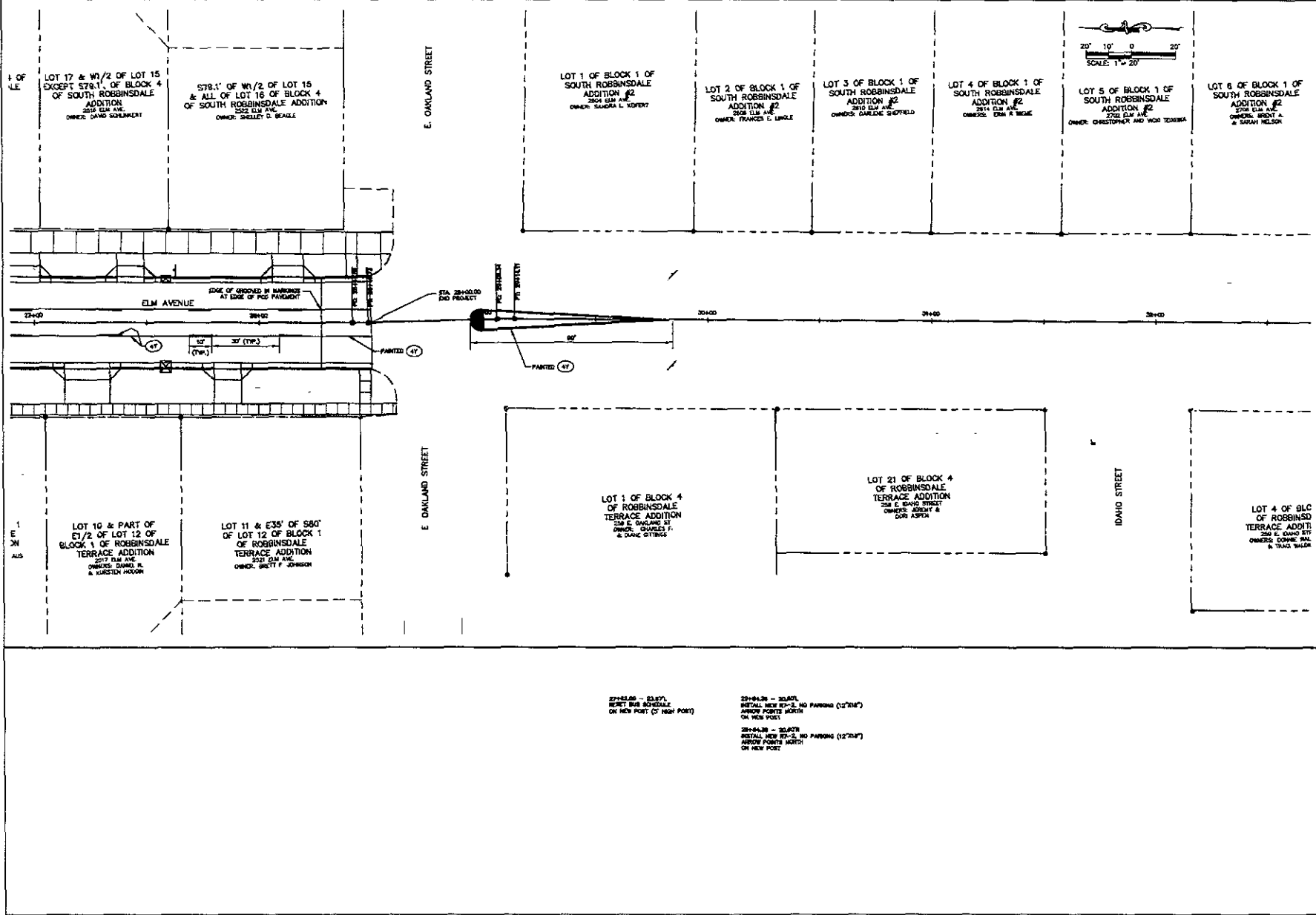
**NOT FOR CONSTRUCTION**

Scale: 1"=20'

Sheet Title: **STRIPING PLAN**

Sheet No: **43 of 63**

Vertical Text: **ELM AVENUE RECONSTRUCTION - PHASE 3**  
**E. TALLENT STREET TO E OAKLAND STREET**



**F M G, Inc.**  
 2700 W. MICHIGAN RD. #1070-0817  
 TOLSON, MI 49783-4108 FAX (800) 842-4822  
 (800) 342-4108  
 www.fmgengineering.com

**NOT FOR CONSTRUCTION**

Scale: 1"=20'  
 Designed By: Chris D. JORDAN  
 Check Date: MAY 2009  
 Project Date: MAY 2009  
 Drawn By: JG  
 Checked By: JG  
 Survey Date: 1/5-2/5  
 Revision:

**ELM AVENUE RECONSTRUCTION - PHASE 3  
 E TALLENT STREET TO E OAKLAND STREET**

STRIPING PLAN  
 44 - 63

22+43.00 - 23+07.00  
 RESET BUS STOP  
 ON NEW POST (2" HIGH POST)

22+94.25 - 23+07.00  
 INSTALL NEW RT-2, NO PARKING (12"X18")  
 ABOVE POSTS NORTH  
 ON NEW POST

22+44.25 - 23+07.00  
 INSTALL NEW RT-2, NO PARKING (12"X18")  
 ABOVE POSTS NORTH  
 ON NEW POST