

**F.M.G., Inc.**  
 8700 Shingle Road  
 Dallas, Texas 75243-0317  
 (800) 343-4108 FAX (800) 342-8322  
 www.fmgengineering.com



**NOT FOR CONSTRUCTION**

Scale: 1"=20'  
 Designed By: Greenlee  
 PWS  
 Design Date: MAY 2008  
 Issue Date: MAY 2008  
 Author: J.M.G.  
 OS: 05/28/08  
 Drawn By: J.M.G.  
 Safety Date: 12/2/05  
 Approved:

ELM AVENUE RECONSTRUCTION - PHASE 3  
 E. TALENT STREET TO E. OAKLAND STREET

Sheet Title: **STORM SEWER PLAN**

**INSTALL 7\"/>
 17+48.44 - 22+87.9 TO 18+16.10 - 24+7.9  
 FURNISH AND INSTALL 102" - Ø30" PRECAST BOX CULVERT**

17+22.64 - 18+7.1 TO 17+47.19 - 18+7.1  
 FURNISH AND INSTALL 96" x 18" RCP (BARNET JOINT)  
 BETWEEN EXISTING 18" RCP AND TYPE B INLET

18+16.10 - 24+7.9 TO 18+46.33 - 18+7.9  
 INSTALL 66" - 48" RCP

20+46.41 - 18+7.1 TO 20+46.47 - 18+7.9  
 INSTALL 40" - 18" RCP

**INSTALL 6\"/>
 18+11.86 - 24+7.9 TO 18+46.43 - 24+7.9  
 INSTALL 62" - 60" RCP**

18+11.86 - 24+7.9 TO 18+46.43 - 24+7.9  
 INSTALL 62" - 60" RCP

18+46.33 - 18+7.1 TO 18+46.33 - 18+7.1  
 INSTALL 40" - 18" RCP

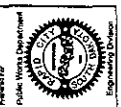
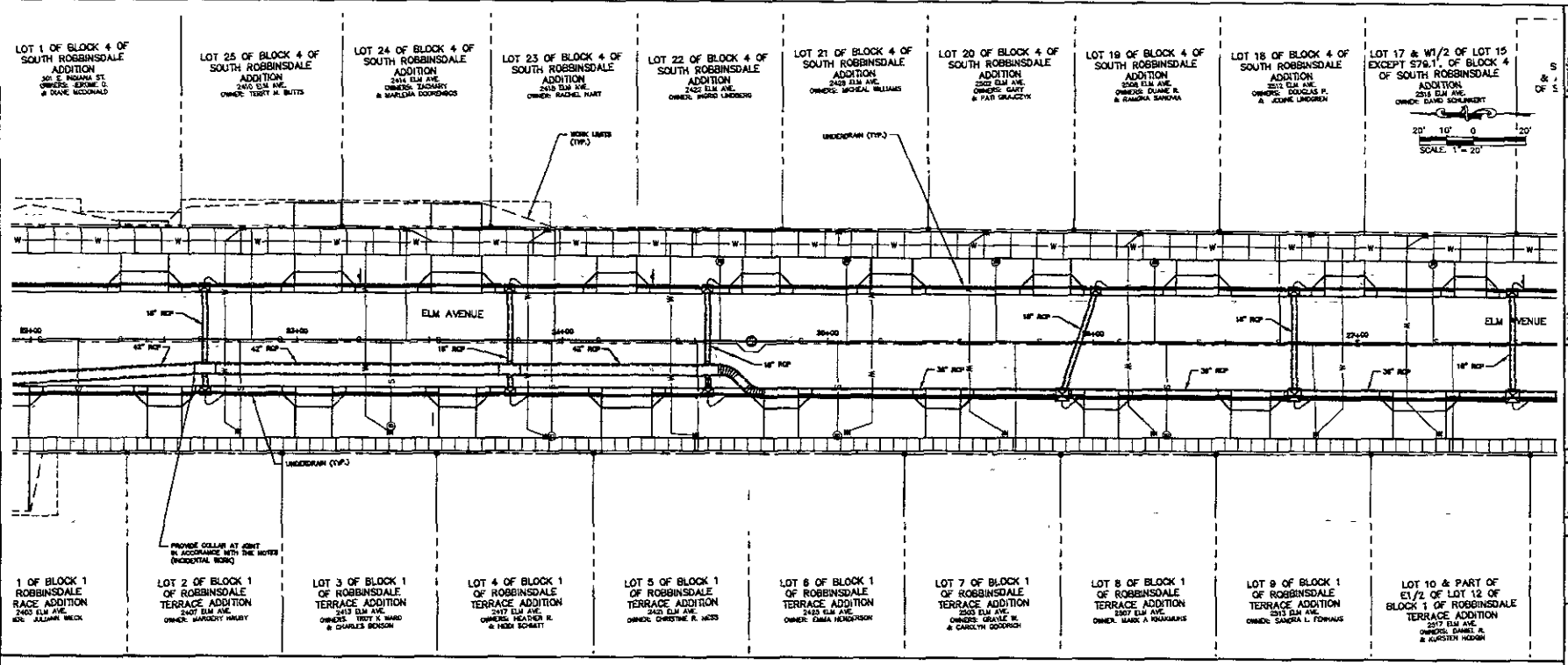
21+18.13 - 127+37.9 TO 21+18.13 - 127+37.9  
 INSTALL 114" - 60" RCP

**INSTALL 6\"/>
 21+18.13 - 18+7.9**

18+16.10 - 24+7.9  
 CONNECT 48" RCP TO 60" BOX CULVERT (48\"/>

18+46.33 - 18+7.1 TO 18+46.33 - 18+7.1  
 INSTALL 40" - 18" RCP

21+18.13 - 127+37.9 TO 21+18.13 - 111.37  
 INSTALL 142" - 42" RCP BETWEEN ANCHOR BOX AND TEE

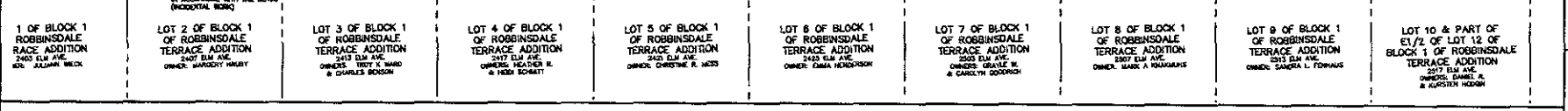


**F M G, Inc.**  
 3700 Sturgis Road  
 Oakland, CA 94611  
 (908) 442-1100 FAX (908) 442-4322  
 www.fmgengineering.com



**NOT FOR CONSTRUCTION**

Scale: 1"=20'  
 Designed by: JWR/AS  
 Checked by: JWR/AS  
 Date: MAY 2009  
 Project No.: 08\_0508.06  
 Drawn by: JWR/AS  
 Date: MAY 2009  
 Survey Date: 10-2008



MANHOLE, 18" DIA. TO 18" DIA. RCP  
 22+80.22 - 18.87L  
 22+80.22 - 18.87L  
 22+80.22 - 18.87L  
 22+80.22 - 18.87L  
 22+80.22 - 18.87L  
 22+80.22 - 18.87L  
 22+80.22 - 18.87L

MANHOLE, 24" DIA. TO 24" DIA. RCP  
 22+80.22 - 18.87L  
 22+80.22 - 18.87L  
 22+80.22 - 18.87L

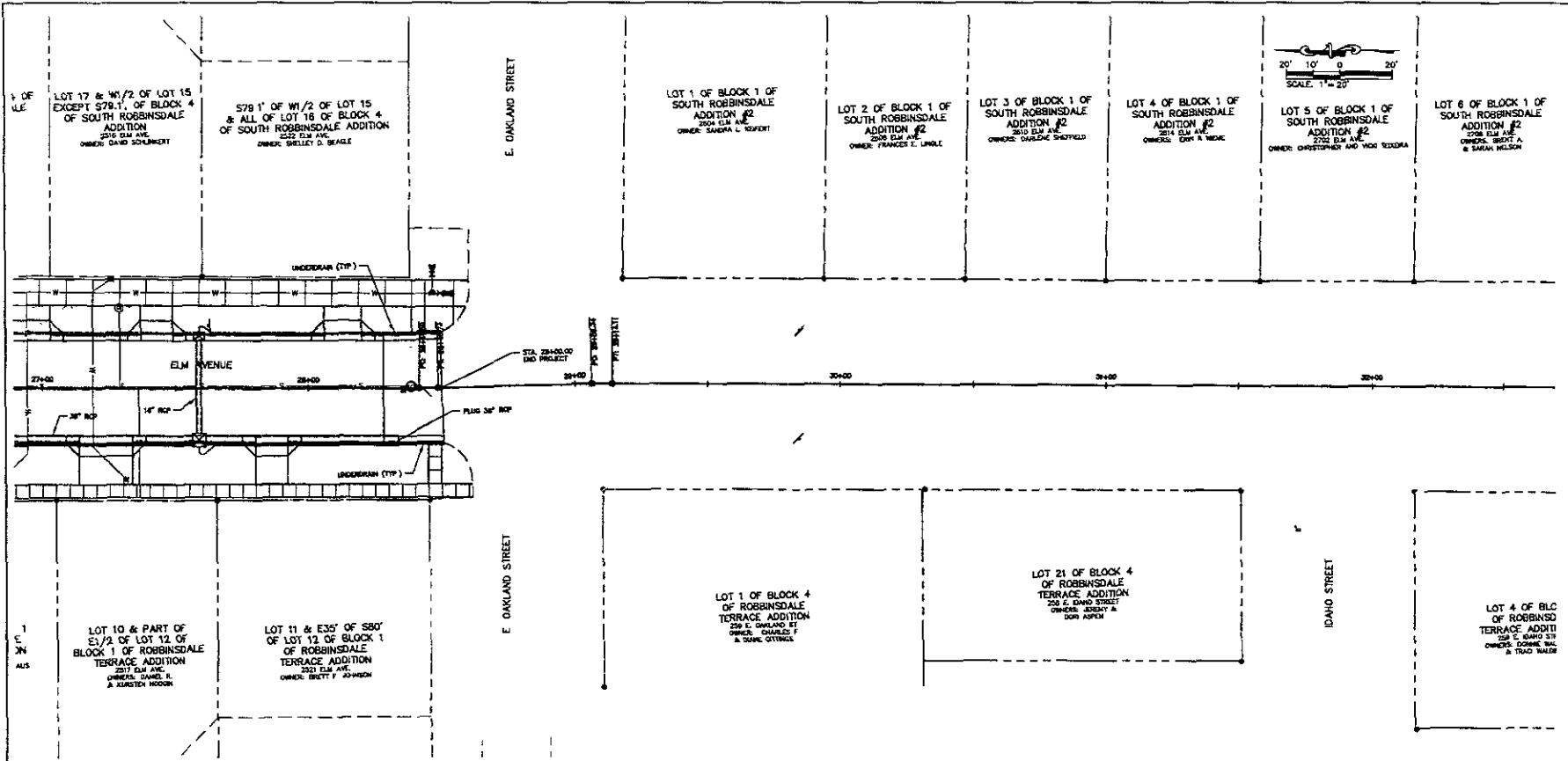
22+80.22 - 18.87L TO 22+80.22 - 8.00R  
 INSTALL 36" X 42" RCP  
 BETWEEN MANHOLE  
 22+80.22 - 11.17R  
 INSTALL 42" X 42" RCP TEE  
 22+80.22 - 11.17R TO 22+76.27 - 11.17R  
 INSTALL 36" X 42" RCP  
 BETWEEN TEES  
 22+80.22 - 18.87L TO 22+80.22 - 8.00R  
 INSTALL 36" X 42" RCP  
 BETWEEN MANHOLE AND TEE  
 22+80.22 - 11.17R  
 INSTALL 42" X 42" RCP TEE  
 22+80.22 - 11.17R TO 22+80.22 - 18.87R  
 INSTALL 36" X 42" RCP  
 BETWEEN TEE AND MANHOLE

22+80.22 - 18.87L TO 22+80.22 - 11.17R  
 INSTALL 42" X 42" RCP  
 BETWEEN TEES  
 22+80.22 - 11.17R  
 INSTALL 42" X 42" RCP TEE  
 22+80.22 - 18.87L TO 22+80.22 - 14.20R  
 INSTALL 36" X 42" RCP  
 BETWEEN MANHOLE AND TEE  
 22+80.22 - 18.87L TO 22+80.22 - 8.00R  
 INSTALL 36" X 42" RCP  
 BETWEEN MANHOLE AND TEE  
 22+80.22 - 11.17R  
 INSTALL 36" X 42" RCP INCREASED  
 22+80.22 - 11.17R TO 22+80.22 - 13.87R  
 INSTALL 36" X 42" RCP  
 BETWEEN TEE AND MANHOLE

22+80.22 - 13.20R TO 22+80.22 - 17.87R  
 INSTALL 36" X 42" RCP  
 BETWEEN TEES  
 22+80.22 - 17.87R TO 22+76.05 - 18.87R  
 INSTALL 36" X 42" RCP  
 BETWEEN TEES  
 22+76.05 - 18.87R TO 22+80.22 - 18.87R  
 INSTALL 36" X 42" RCP  
 BETWEEN TEES  
 22+80.22 - 18.87R TO 22+80.22 - 18.87L  
 INSTALL 36" X 42" RCP  
 BETWEEN MANHOLE  
 22+80.22 - 18.87R TO 22+76.05 - 18.87R  
 INSTALL 36" X 42" RCP  
 BETWEEN MANHOLE  
 22+76.05 - 18.87R TO 22+76.05 - 18.87R  
 INSTALL 36" X 42" RCP  
 BETWEEN MANHOLE  
 22+76.05 - 18.87R TO 22+80.22 - 18.87R  
 INSTALL 36" X 42" RCP  
 BETWEEN MANHOLE

ELM AVENUE RECONSTRUCTION - PHASE 3  
 E TALLENT STREET TO E. OAKLAND STREET

STORM SEWER PLAN



NORMAL FOR SOME S. BRNCH  
 AT THE FOLLOWING LOCATIONS  
 27+06.84 - 18.87'

INSTALL 40" DIA. PIPE IN BRNCH  
 AT THE FOLLOWING LOCATIONS  
 27+06.84 - 18.87'

27+06.84 - 18.87' TO 28+33.80 - 18.87'  
 INSTALL 40" - 14" RCP  
 BETWEEN BRNCH

27+06.84 - 18.87' TO 28+33.80 - 18.87'  
 INSTALL 78" - 36" RCP

28+33.80 - 18.87'  
 PLUS 36" RCP



Prepared by  
**F.M.G., Inc.**  
 8700 Ebbetts Road  
 Pikesville, MD 21110-0317  
 (800) 842-4108 FAX (410) 342-4222  
 www.fmgengineering.com

**NOT FOR CONSTRUCTION**

Date: 1/2007  
 Designed By: JGR/AS  
 Checked By: JGR/AS  
 Issue Date: MAY 2009  
 Revised Date: MAY 2009  
 Surveyed By: Survey Data  
 Date: 15-25

ELM AVENUE RECONSTRUCTION - PHASE 3  
 E TALLENT STREET TO E. OAKLAND STREET

Sheet  
**33 of 63**