

NOTE REGARDING LOCATION OF CONCRETE JOINTS: THE LOCATION OF JOINTS AS SHOWN OR REFERRED TO IN THESE SHEETS ARE ONLY APPROXIMATE LOCATIONS TO BE USED AS A GUIDE IN THE FINAL LOCATION OF THE JOINTS AND TO AFFORD WORKERS A BASIS FOR ESTIMATING THE CONSTRUCTION COSTS OF THE JOINTS. THE FINAL LOCATION OF THE JOINTS IS TO BE APPROVED BY THE OWNER DURING CONSTRUCTION.

**LEGEND:**

- BARED LONGITUDINAL JOINT(40-2)
- TRANSVERSE CONSTRUCTION JOINT WITH CONCRETE BAR ASSEMBLIES (SEE DET 350(1) AND 40-2)
- LT LONGITUDINAL CONSTRUCTION JOINT WITH DE BARS(40-2)
- K LONGITUDINAL CONSTRUCTION JOINT WITHOUT DE BARS(40-2)

**NOTE:**

THERE WILL BE NO EXPANSION JOINT FILLER MATERIAL PLACED BETWEEN SIDEWALK AND CURB AND GUTTER AT LOCATIONS WHERE SIDEWALK AND CURB AND GUTTER ARE ADJACENT WITH THE EXCEPTION FOR CURB RAMPS.

THE WALKING CURB AND GUTTER MAY BE PLACED MONOLITHICALLY WITH THE FOOT PAVEMENT. A LONGITUDINAL BARED JOINT FILLED WITH HOT POLYMER ELASTIC JOINT SEALER SHALL BE USED AS DETAILER IN SO DOT STANDARD PLATE 38(1) IF THE CONCRETE CURB AND GUTTER WERE POURED SEPARATELY.

JOINTS IN CURB AND GUTTER SHALL BE CONSTRUCTED IN ACCORDANCE WITH DETAIL STANDARD PLATE 38(1) WITH THE EXCEPTION THAT LOW MODULUS ELASTIC SEALANT BE USED FOR ALL JOINTS REGARDLESS OF CONSTRUCTION.



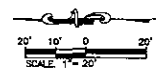
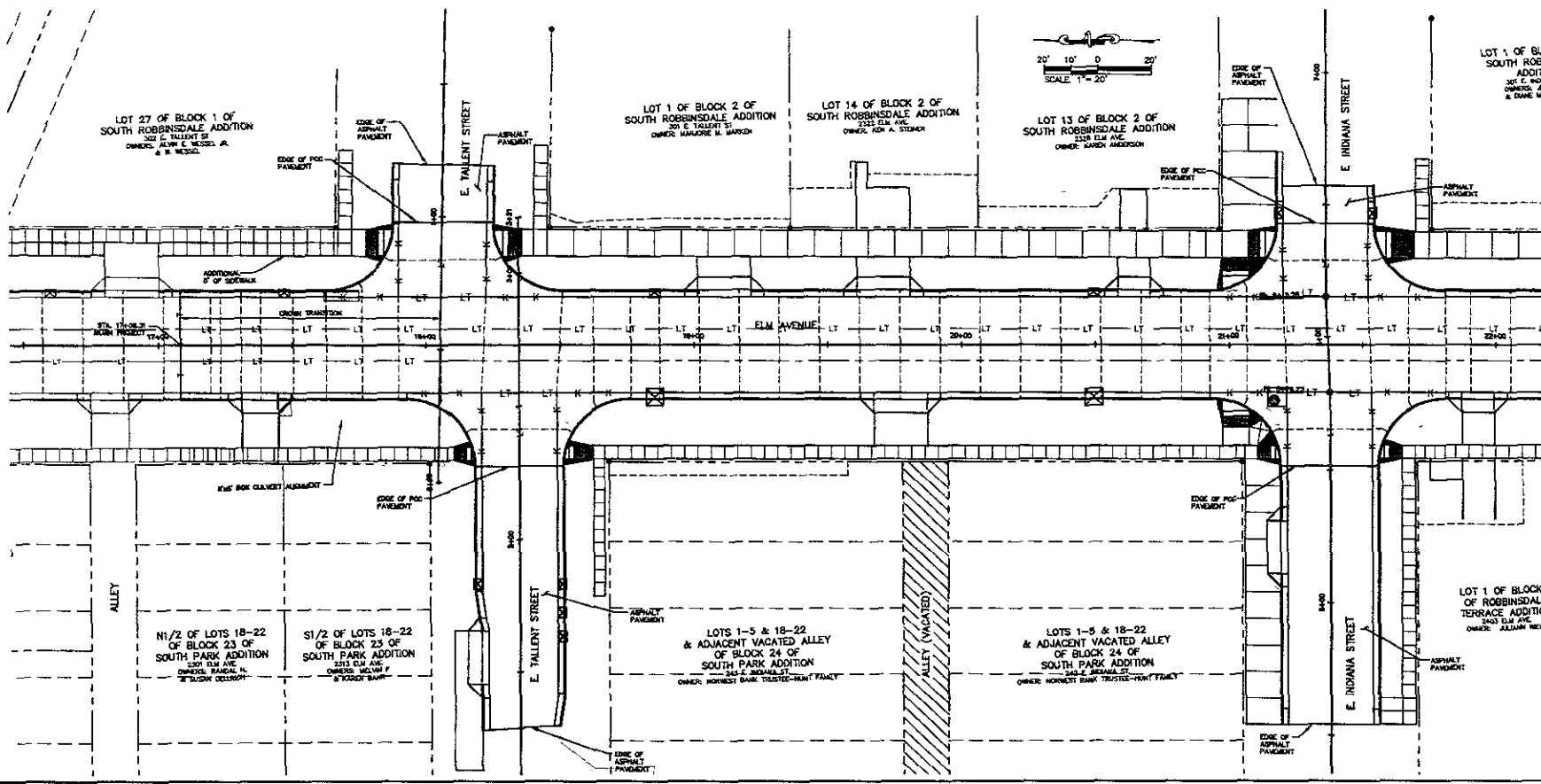
**F.M.G., Inc.**  
 8300 Elm Avenue, Suite 100  
 Rockville, MD 20850-4037  
 (301) 283-1100 FAX: (301) 343-4322  
 www.fmgengineering.com

**NOT FOR CONSTRUCTION**

Drawn By	17199Z
Designed By	JKR/KAS
Check Date	May 2009
Issue Date	May 2009
Checked By	JKR
Issue Date	11-25

ELM AVENUE RECONSTRUCTION - PHASE 3  
 E TALENT STREET TO E OAKLAND STREET

SURFACING PLAN



LOT 1 OF B.L.O. SOUTH ROBB ADDITION  
301 E. TALLENT ST.  
OWNER: JIM HOSAN  
OWNER: JIM & DANE MCD



**F.M.G., Inc.**  
2305 E. WISCONSIN  
CHICAGO, IL 60614  
(773) 343-1100 FAX (773) 343-1222  
www.fmginc.com



**NOT FOR CONSTRUCTION**

Date	11-20-07
Designed By	RAS
Drawn By	JWR/RAS
Check/Date	WEN/DAVE MAY 2009
Revised/Date	MAY 2009
Special Job No.	08-0025-00
Surveyed By	F.M.G.
Survey Date	1/5-25

ELM AVENUE RECONSTRUCTION - PHASE 3  
E TALLENT STREET TO E. OAKLAND STREET

**NOTE: SHOWING LOCATION OF CONCRETE CURB/SEWER JOINTS**  
THE LOCATION OF JOINTS AS SHOWN ON THESE SHEETS ARE ONLY APPROXIMATE LOCATIONS TO BE USED AS A GUIDE IN THE FINAL LOCATION OF THE JOINTS AND TO REFLECT THROUGH A DESIGN FOR ESTIMATE CONSTRUCTION COSTS OF THE CURBS. THE FINAL LOCATION OF THE JOINTS IS TO BE APPROVED BY THE ENGINEER DURING CONSTRUCTION.

- LEGEND:**
- BARED LONGITUDINAL JOINT (40-2)
  - TRANSVERSE CONSTRUCTION JOINT WITH BOND-BE BAR ASSEMBLY (SD DOT 38201 AND 40-2)
  - LT LONGITUDINAL CONSTRUCTION JOINT WITH THE BOND-BE (40-2)
  - K LONGITUDINAL CONSTRUCTION JOINT WITHOUT THE BOND-BE (40-2)
  - T INSTALL THE BARS (SDOT 38202)

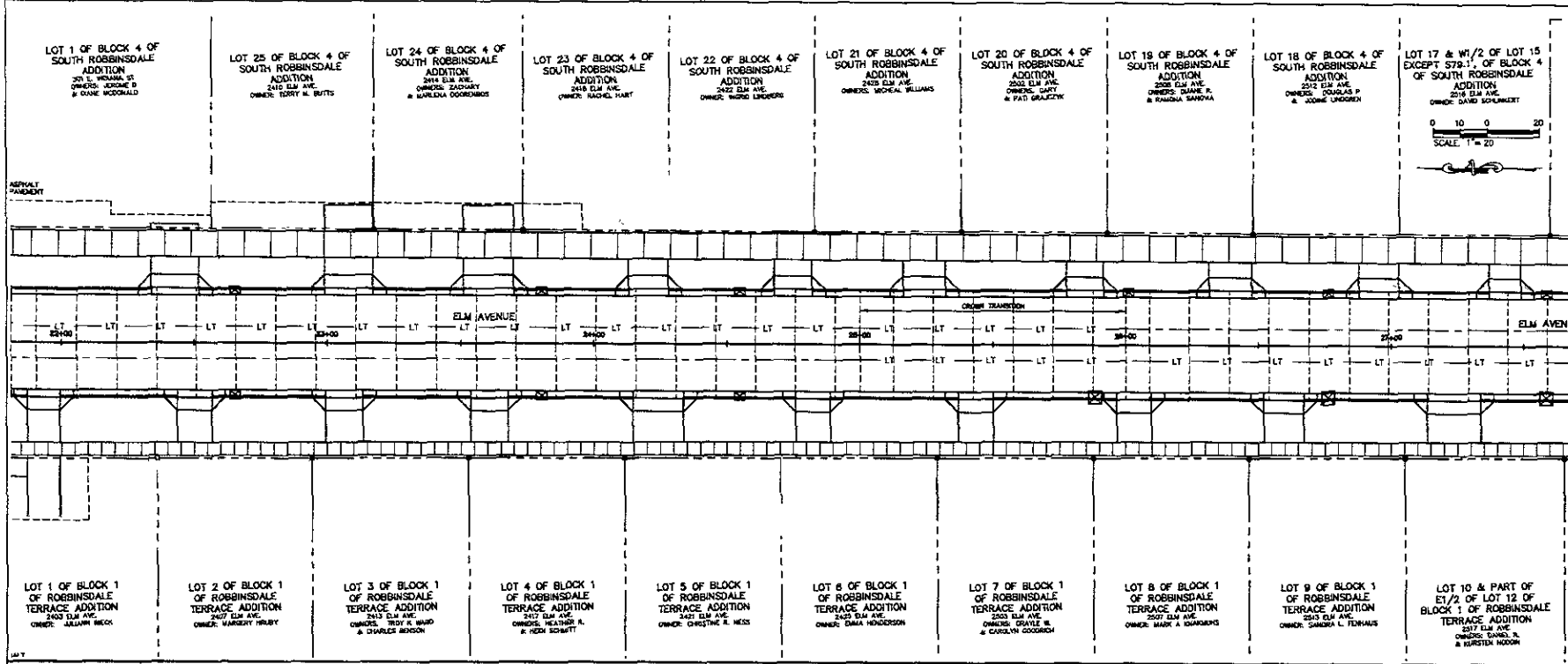
**NOTE:**  
THERE WILL BE NO EXPANSION JOINT FILLER MATERIAL PLACED BETWEEN SIDEWALK AND CURB AND OUTER AT LOCATIONS WHERE SIDEWALK AND CURB AND OUTER ARE ADJACENT WITH THE EXCEPTION FOR CURB RAMP.

THE MARKING CURB AND OUTER MAY BE PLACED INDIVIDUALLY WITH THE POC PAVEMENT. A LONGITUDINAL BARED JOINT FILLED WITH HOT POURED PLASTIC JOINT SEALER SHALL BE USED AS DETAIL IN ITS DOT ESTIMATING PLACE 38201 IF THE CONCRETE CURB AND OUTER WERE POURED INDIVIDUALLY.

JOINTS IN CURB AND OUTER SHALL BE CONSTRUCTED IN ACCORDANCE WITH SDOT STANDARD PRACTICE 38201 WITH THE EXCEPTION THAT HOT MODULUS SILICONE SEALANT BE USED FOR ALL JOINTS THROUGHOUT OF CONSTRUCTION.

Sheet No.

**SURFACING PLAN**



**F.M.G., Inc.**  
 37500 Struble Road  
 Roseville, IL 60442-1017  
 www.fmgengineering.com

**NOT FOR CONSTRUCTION**

Scale: 1"=20'  
 Conceived By: RAS  
 Design Date: MAY 2009  
 Printed Job No.: CS 0324 08  
 Checked By: F.M.G.  
 Date: 11-25  
 Drawn By: JWR/S  
 Date: MAY 2009

ELM AVENUE RECONSTRUCTION - PHASE 3  
 E. TALLENT STREET TO E. OAKLAND STREET

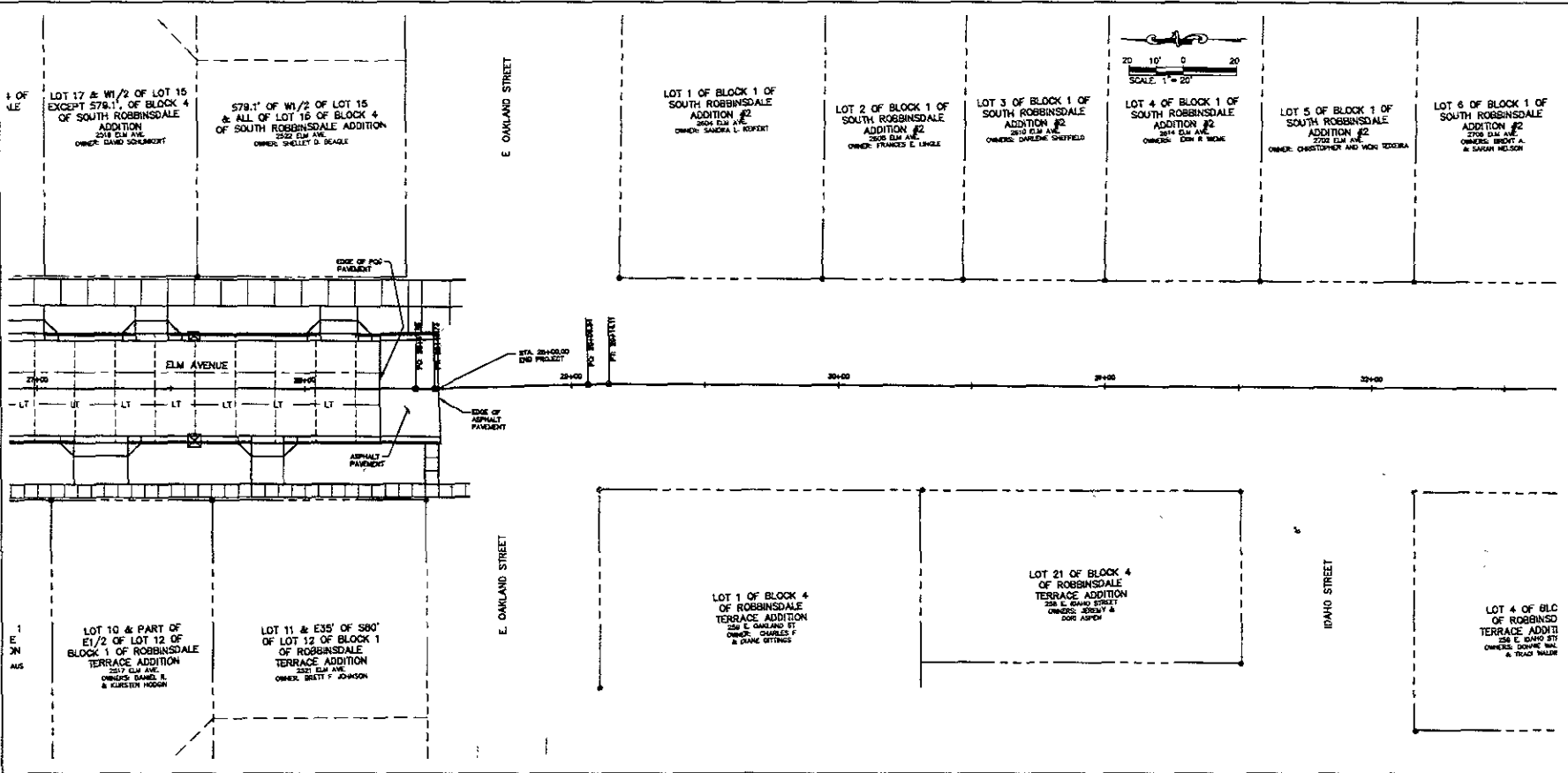
**NOTE REGARDING LOCATION OF CONCRETE PAVEMENT JOINTS**  
 THE LOCATION OF JOINTS AS SHOWN ON THIS DRAWING ARE ONLY APPROXIMATE LOCATIONS TO BE USED AS A GUIDE IN THE FINAL LOCATION OF THE JOINTS AND TO FURNISH BIDDERS A BASIS FOR ESTIMATING THE CONSTRUCTION COSTS OF THE JOINTS. THE FINAL LOCATION OF THE JOINTS IS TO BE APPROVED BY THE ENGINEER DURING CONSTRUCTION.

- LEGEND:**
- BARED LONGITUDINAL JOINT(40-5)
  - - - - TRANSVERSE CONTRACTION JOINT WITH CORREL BAR ASSEMBLED (SD DOT 360.011 AND 90-5)
  - LT --- LONGITUDINAL CONSTRUCTION JOINT WITH THE BARS(40-2)
  - K --- LONGITUDINAL CONSTRUCTION JOINT WITHOUT THE BARS(40-5)

**NOTE:**  
 THERE WILL BE NO EXPANSION JOINT FILLER MATERIAL PLACED BETWEEN SIDEWALK AND CURB AND GUTTER AT LOCATIONS WHERE SIDEWALK AND CURB AND GUTTER ARE ADJACENT WITH THE EXCEPTION FOR CURB RAMP.

THE SIDEWALK CURB AND GUTTER MAY BE PLACED INDIVIDUALLY WITH THE POC PAVEMENT. A LONGITUDINAL BARED JOINT FILLED WITH HOT ROLLED ELASTIC JOINT SEALER SHALL BE USED AS DETAILED IN SD DOT STANDARD PLATE 360.111 IF THE CONCRETE CURB AND GUTTER ARE POURED INDIVIDUALLY.

JOINTS IN CURB AND GUTTER SHALL BE CONSTRUCTED IN ACCORDANCE WITH SDOT STANDARD PLATE 360.011 WITH THE EXCEPTION THAT LOW MODULUS ELASTIC SEALANT BE USED FOR ALL JOINTS REGARDLESS OF CONSTRUCTION.



**NOT BEARING LOCATIONS OF CONSTRUCTION JOINTS**  
 THE LOCATION OF PARTS AS SHOWN ON THIS SHEET ARE ONLY APPROXIMATE LOCATIONS TO BE USED AS A GUIDE IN THE FINAL LOCATION OF THE JOINTS AND TO REFERENCE HEREON A BASIS FOR OBTAINING THE CONSTRUCTION COSTS OF THE JOINTS. THE FINAL LOCATION OF THE JOINTS IS TO BE APPROVED BY THE ENGINEER DURING CONSTRUCTION.

**LEGEND**

- SAVED LONGITUDINAL JOINT (40-2)
- TRANSVERSE CONSTRUCTION JOINT WITH CONCRETE BAR ASSEMBLIES (DO NOT SHOW AND 40-4)
- LT ——— LONGITUDINAL CONSTRUCTION JOINT WITH THE MARK (40-2)
- K ——— LONGITUDINAL CONSTRUCTION JOINT WITHOUT THE MARK (40-2)

**NOTE:**  
 THERE WILL BE NO EXPANSION JOINT FILLER MATERIAL PLACED BETWEEN MODULAR AND CURB AND GUTTER AT LOCATIONS WHERE MODULAR AND CURB AND GUTTER ARE ADJACENT WITH THE EXCEPTION FOR CURB RAMP.

THE MODULAR CURB AND GUTTER MAY BE PLACED MONOLITHICALLY WITH THE PCC PAVEMENT. A LONGITUDINAL SAVED JOINT FILLED WITH HOT POURED ELASTIC JOINT SEALER SHALL BE USED AS DETAIL IN 88 DOT STANDARD PLATE 80011 IF THE CONCRETE CURB AND GUTTER WERE POURED INDIVIDUALLY.

JOINTS IN CURB AND GUTTER SHALL BE CONSTRUCTED IN ACCORDANCE WITH 88DOT STANDARD PLATE 80010 WITH THE EXCEPTION THAT LOW MODULAR BRIDGE INLAYMENT BE USED FOR ALL JOINTS IRRESPECTIVE OF CONSTRUCTION.

Public Works Department  
 Engineering Division

**F M G, Inc.**  
 3700 Burbank Road 702-0817  
 (800) 242-4108 FAX (800) 242-8228  
 www.fmgengineering.com

**NOT FOR CONSTRUCTION**

Scale: 1"=20'

Designed By	Drawn By
RAS	JHORAS
Design Date	Issue Date
MAY 2008	MAY 2008
Issue Date	Issue Date
05/25/08	05/25/08
Surveyed By	Survey Date
RAS	1/5-25

**ELM AVENUE RECONSTRUCTION - PHASE 3**  
**E TALLENT STREET TO E. OAKLAND STREET**

Sheet Title

**SURFACING PLAN**

Sheet

**41 of 63**