

Project for
F.M.G., Inc.
 3700 Bluffville Road
 Suite 100
 (408) 244-1100 FAX (408) 244-4222
 www.fmgengineering.com



NOT FOR CONSTRUCTION

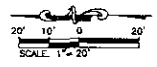
Scale: 1"=50'
 Drawn by: JRS
 Design Date: MAY 2008
 Checked by: JRS
 Survey Date: 10/22/07

ELM AVENUE RECONSTRUCTION - PHASE 3
 E. TALLENT STREET TO E. OAKLAND STREET

EROSION & SEDIMENT CONTROL LEGEND

- (A) SILENT PROTECTION, CITY OF RAPID CITY DETAIL 148.1R, 148.2R, 148.2D, 148.2E, 148.2F, OR 148.2G DEPENDING ON TYPE OF PAVED AND STAGE OF CONSTRUCTION.
- (B) SILENT PROTECTION FOR TYPE B SILENT, DETAIL 734.11
- (C) SILENT PROTECTION FOR TYPE B SILENT, DETAIL 734.10
- (D) VEHICLE TRACKING CONTROL, CITY OF RAPID CITY DETAIL 148.1E. USE AT ALL LOCATIONS OF VEHICULAR INGRESS AND EGRESS TO CONSTRUCTION SITE.
- (E) BILT POND, CITY OF RAPID CITY DETAIL 148.1E.
- (F) CONCRETE WASHOUT AREA. LOCATION TO BE DETERMINED BY THE CONTRACTOR.
- (G) PILET MARK IN ACCORDANCE WITH REQUIREMENTS OF CITY OF RAPID CITY STORMWATER QUALITY MANUAL, CHAPTER 1, PARAGRAPH 1.6.2. THE CITY OF RAPID CITY CONTACT PHONE NUMBER TO BE USED ON THE MARK IS 781-344-4134.

NOTE: CITY OF RAPID CITY STANDARD DETAILS FOR EROSION CONTROL MEASURES ARE AVAILABLE ON THE CITY OF RAPID CITY STORMWATER WEB PAGE.

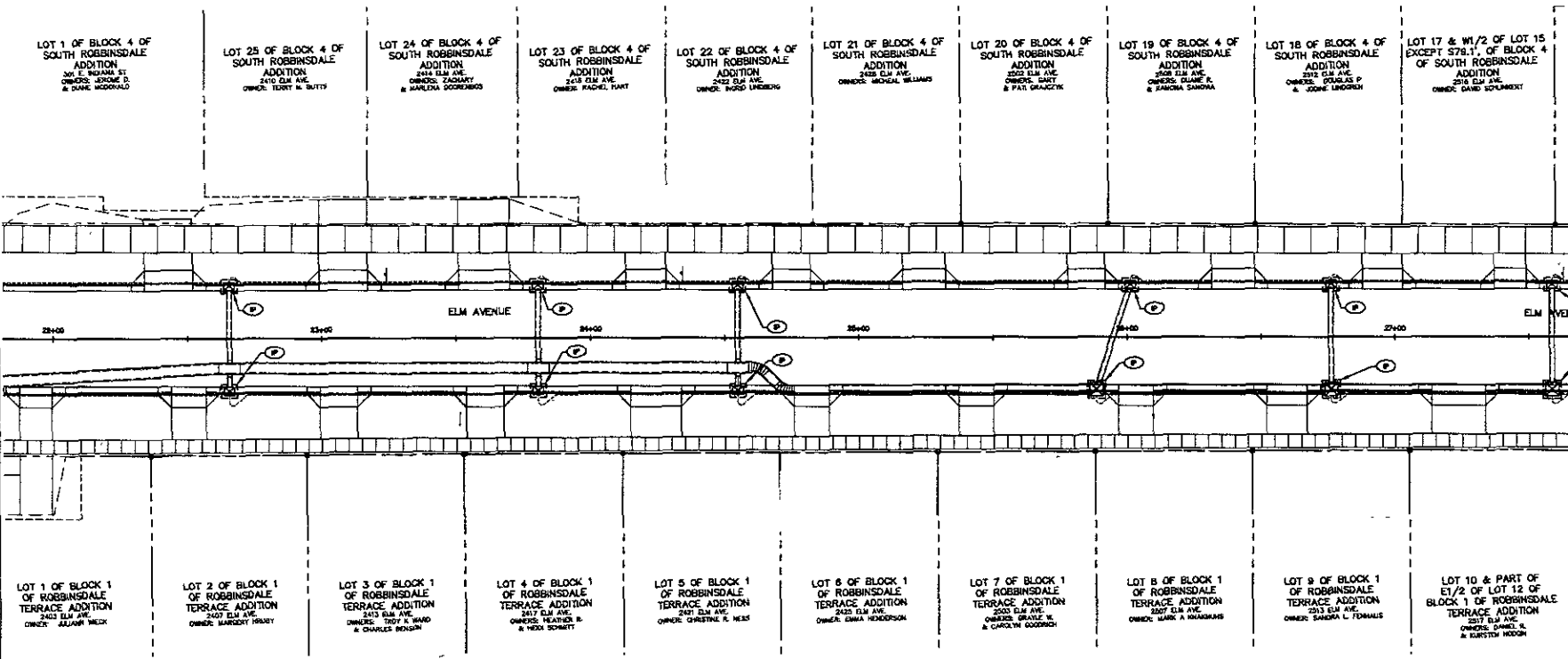


F.M.G., Inc.
 2700 Alvarado Road, Suite 205, St. Louis, MO 63116
 (314) 542-1100 FAX (314) 542-4322
 www.fmgengineering.com



NOT FOR CONSTRUCTION

Scale: 1"=20'
 Designed by: RAS
 Checked by: JMR/AG
 Project Date: MAY 2009
 Issue Date: MAY 2009
 Printed on: 11/22/09
 Drawn by: JMR/AG
 Checked by: JMR/AG
 Date: 11/22/09



EROSION & SEDIMENT CONTROL LEGEND

- (A) INLET PROTECTION, CITY OF RAPID CITY DETAIL 148.10, 148.11, 148.12, 148.13, 148.14, OR 148.15, DEPENDING ON TYPE OF INLET AND STAGE OF CONSTRUCTION.
- (B) INLET PROTECTION FOR TYPE E INLET, DETAIL 754.11
- (C) INLET PROTECTION FOR TYPE B INLET, DETAIL 754.10
- (D) SLOPE TRACKING CONTROL, CITY OF RAPID CITY DETAIL 148.16, USE AT ALL LOCATIONS OF TYPICAL BARRIERS AND EXPOSED TO CONSTRUCTION SITE.
- (E) SILT FENCE, CITY OF RAPID CITY DETAIL 148.12
- (F) SENSITIVE WETLAND AREA, LOCATION TO BE DETERMINED BY THE CONTRACTOR.
- (G) POST SIGN IN ACCORDANCE WITH REQUIREMENTS OF CITY OF RAPID CITY STORMWATER QUALITY MANUAL, CHAPTER 1, PARAGRAPHS 3.2.3.3, 3.4.2, CITY OF RAPID CITY CONTRACT NUMBER 1000000000 TO BE USED ON THE SIGN IS 600-200-1114.

NOTE: CITY OF RAPID CITY STANDARD DETAILS FOR EROSION CONTROL ITEMS ARE AVAILABLE ON THE CITY OF RAPID CITY STORMWATER WEB PAGE.

ELM AVENUE RECONSTRUCTION - PHASE 3
 E TALLENT STREET TO E OAKLAND STREET

