

<p><b>STREET SEWER REMOVAL</b></p> <p>17+18.4 - 27+78 TO 18+25.4 - 42+78 REMOVE 18" - 80' RCP</p> <p>18+78.8 - 42+78 TO 18+78.3 - 41+78 REMOVE 21" - 24' RCP</p> <p>18+13.0 - 31+78 REMOVE IF TYPE C ALLEY</p>	<p><b>SEWERY SEWER REMOVAL</b></p> <p><b>REMOVE ALL MANHOLE</b></p> <p>17+92.3 - 42+78 18+78.8 - 42+78 21+36.2 - 3+41</p> <p>21+36.2 - 42+78 TO 21+36.2 - 3+41 REMOVE 64" - 8" SEWERY SEWER MAIN</p> <p>21+36.2 - 3+41 TO 21+36.2 - 42+78 REMOVE 24" - 8" SEWERY SEWER MAIN</p>	<p><b>WATER MAIN REMOVAL</b></p> <p><b>REMOVE FIRE HYDRANT AND ALL VALVE</b></p> <p>17+92.3 - 42+78 18+78.8 - 42+78</p> <p><b>REMOVE WATER MAIN</b></p> <p>17+92.3 - 42+78 18+78.8 - 42+78 21+36.2 - 42+78 21+36.2 - 42+78</p> <p><b>REMOVE CURB STOP</b></p> <p>17+92.3 - 37+78 21+36.2 - 42+78</p>	<p><b>ROAD REMOVAL</b></p> <p><b>REMOVE SIGN AND POST FOR STREET</b></p> <p>17+92.3 - 30+78 (STOP AND STREET ASSEMBLY)</p> <p>18+78.8 - 25+78 (SCHOOL CROSSING WARNING ASSEMBLY)</p> <p>18+78.8 - 25+78 (SCHOOL ZONE SPEED LIMIT) CITY TRAFFIC DIVISION</p> <p>21+36.2 - 31+78 (SCHOOL CROSSING AND ARROW AND BUS SCHEDULE)</p> <p>21+36.2 - 31+78 (SCHOOL CROSSING AND ARROW AND BUS SCHEDULE)</p> <p><b>REMOVE SIGN</b></p> <p>18+78.8 - 37+78 20+18.7 - 27+78</p>	<p><b>PAVEMENT REMOVAL</b></p> <p><b>REMOVE CONCRETE PAVEMENT</b></p> <p>17+92.3 TO 17+92.3 (40' BY) 17+92.3 TO 17+92.3 (40' BY) (INCLUDES C &amp; D)</p> <p><b>REMOVE CONCRETE PAVEMENT WITH ASPHALT OVERLAY</b></p> <p>17+92.3 TO 21+36.2 ON ELM AVENUE 18+78.8 - 42+78</p> <p><b>REMOVE CONCRETE APPROACH PAVEMENT</b></p> <p>17+37.3 - 8' (24' BY) 18+78.8 - 8' (18' BY) 20+42.3 - 1' (24' BY) 21+36.2 - 1' (24' BY)</p> <p><b>REMOVE ASPHALT PAVEMENT</b></p> <p>17+92.3 TO 21+36.2 E. TALENT WEST OF ELM (206' BY) 18+78.8 - 1' (24' BY) (OVERLAY) 18+78.8 - 8' (24' BY) (OVERLAY)</p> <p><b>REMOVE CONCRETE SIDEWALK</b></p> <p>17+92.3 - 73+41 TO 17+92.3 - 36+41 TO 17+92.3 - 36+41 (22' BY)</p> <p>17+92.3 - 36+41 TO 18+78.8 - 26+78 (44.3' BY) 18+78.8 - 36+41 TO 21+36.2 - 73+41 (226' BY) 18+78.8 - 42+78 TO 21+36.2 - 42+78 INCLUDING TO 18+78.8 - 26+78 ON E. TALENT WEST OF ELM AND 44+54.1 - 26+78 ON INDIANA STREET (284.4' BY)</p>	<p><b>REMOVE CONCRETE CURB AND GUTTER</b></p> <p>1+28.1 - 14+01 TO 24+78 - 14+21 (110' E. TALENT WEST OF ELM 1+28.1 - 18+07 TO 24+78 - 18+57 (100' E. TALENT WEST OF ELM)</p> <p><b>CLEANING AND GRASSING</b></p> <p><b>CLEANING AND GRASSING 2'-14" TERRACE</b></p> <p>18+78.8 - 42+78</p> <p><b>CLEANING AND GRASSING 14'-24" TERRACE</b></p> <p>17+92.3 - 42+78</p> <p><b>CLEANING AND GRASSING STRIP</b></p> <p>17+92.3 - 60+78</p> <p><b>LIGHT POLES</b></p> <p>18+13.0 - 36+78 20+14.3 - 30+78</p> <p>COORDINATE WITH BLACK HILLS POWER AND LIGHT TO HAVE BLACK HILLS POWER AND LIGHT REMOVE LIGHTS FROM POWER POLES</p>
--	---	--	--	--	--

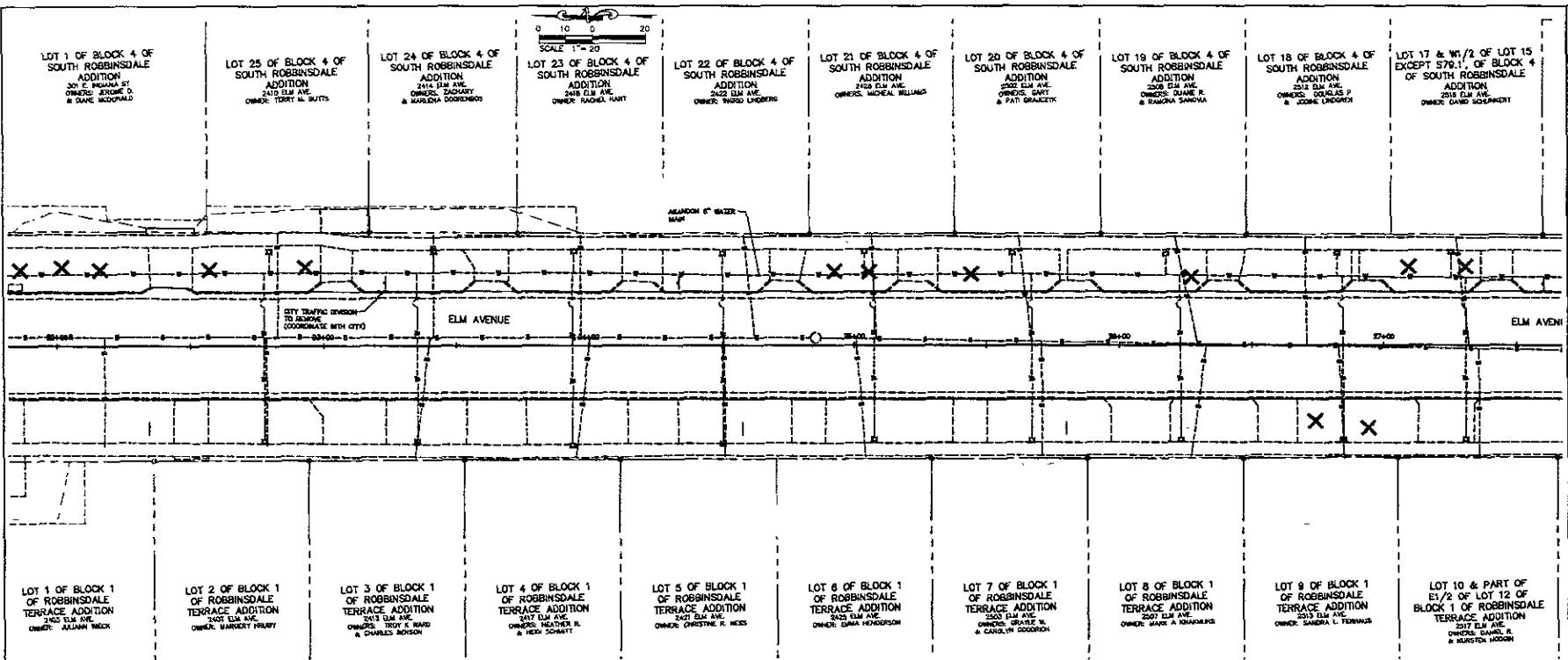
**F&M, Inc.**
  
 2700 Black Hills Road
   
 Grand City, MO 67703-0317
   
 (800) 343-4106 FAX (800) 343-4822
   
 www.fmgengineering.com

**NOT FOR CONSTRUCTION**

Drawn By: RAS	Check By: JOTRAS
Design Date: MAY 2006	Print Date: MAY 2006
Revised Job No: 08-0027-04	
Drawn By: F&M	Check Date: 11-25-05

ELM AVENUE RECONSTRUCTION - PHASE 3  
 E. TALENT STREET TO E. OAKLAND STREET

16 OF 63



<p><b>SEMI-ANNUAL MAINTENANCE</b></p> <p>24-402.4 - 3.7%</p> <p><b>SEMI-ANNUAL MAINTENANCE</b></p> <p>24-402.4 - 3.7%</p> <p><b>WATER MAIN REMOVAL</b></p> <p>24-777 - 36.7%</p> <p>24-778 - 36.7%</p> <p>24-779 - 36.7%</p> <p>24-780 - 36.7%</p> <p>24-781 - 36.7%</p> <p>24-782 - 36.7%</p> <p>24-783 - 36.7%</p> <p>24-784 - 36.7%</p> <p>24-785 - 36.7%</p> <p>24-786 - 36.7%</p> <p>24-787 - 36.7%</p> <p>24-788 - 36.7%</p> <p>24-789 - 36.7%</p> <p>24-790 - 36.7%</p> <p>24-791 - 36.7%</p> <p>24-792 - 36.7%</p> <p>24-793 - 36.7%</p> <p>24-794 - 36.7%</p> <p>24-795 - 36.7%</p> <p>24-796 - 36.7%</p> <p>24-797 - 36.7%</p> <p>24-798 - 36.7%</p> <p>24-799 - 36.7%</p> <p>24-800 - 36.7%</p>	<p><b>REMOVABLE</b></p> <p>24-402.4 - 3.7%</p> <p>24-402.5 - 3.7%</p> <p>24-402.6 - 3.7%</p> <p>24-402.7 - 3.7%</p> <p>24-402.8 - 3.7%</p> <p>24-402.9 - 3.7%</p> <p>24-403.0 - 3.7%</p> <p>24-403.1 - 3.7%</p> <p>24-403.2 - 3.7%</p> <p>24-403.3 - 3.7%</p> <p>24-403.4 - 3.7%</p> <p>24-403.5 - 3.7%</p> <p>24-403.6 - 3.7%</p> <p>24-403.7 - 3.7%</p> <p>24-403.8 - 3.7%</p> <p>24-403.9 - 3.7%</p> <p>24-404.0 - 3.7%</p> <p>24-404.1 - 3.7%</p> <p>24-404.2 - 3.7%</p> <p>24-404.3 - 3.7%</p> <p>24-404.4 - 3.7%</p> <p>24-404.5 - 3.7%</p> <p>24-404.6 - 3.7%</p> <p>24-404.7 - 3.7%</p> <p>24-404.8 - 3.7%</p> <p>24-404.9 - 3.7%</p> <p>24-405.0 - 3.7%</p>	<p><b>PERMANENT REMOVAL</b></p> <p>24-402.1 - 3.7%</p> <p>24-402.2 - 3.7%</p> <p>24-402.3 - 3.7%</p> <p>24-402.4 - 3.7%</p> <p>24-402.5 - 3.7%</p> <p>24-402.6 - 3.7%</p> <p>24-402.7 - 3.7%</p> <p>24-402.8 - 3.7%</p> <p>24-402.9 - 3.7%</p> <p>24-403.0 - 3.7%</p> <p>24-403.1 - 3.7%</p> <p>24-403.2 - 3.7%</p> <p>24-403.3 - 3.7%</p> <p>24-403.4 - 3.7%</p> <p>24-403.5 - 3.7%</p> <p>24-403.6 - 3.7%</p> <p>24-403.7 - 3.7%</p> <p>24-403.8 - 3.7%</p> <p>24-403.9 - 3.7%</p> <p>24-404.0 - 3.7%</p> <p>24-404.1 - 3.7%</p> <p>24-404.2 - 3.7%</p> <p>24-404.3 - 3.7%</p> <p>24-404.4 - 3.7%</p> <p>24-404.5 - 3.7%</p> <p>24-404.6 - 3.7%</p> <p>24-404.7 - 3.7%</p> <p>24-404.8 - 3.7%</p> <p>24-404.9 - 3.7%</p> <p>24-405.0 - 3.7%</p>	<p><b>CLEARING AND GRUBBING</b></p> <p>24-402.1 - 3.7%</p> <p>24-402.2 - 3.7%</p> <p>24-402.3 - 3.7%</p> <p>24-402.4 - 3.7%</p> <p>24-402.5 - 3.7%</p> <p>24-402.6 - 3.7%</p> <p>24-402.7 - 3.7%</p> <p>24-402.8 - 3.7%</p> <p>24-402.9 - 3.7%</p> <p>24-403.0 - 3.7%</p> <p>24-403.1 - 3.7%</p> <p>24-403.2 - 3.7%</p> <p>24-403.3 - 3.7%</p> <p>24-403.4 - 3.7%</p> <p>24-403.5 - 3.7%</p> <p>24-403.6 - 3.7%</p> <p>24-403.7 - 3.7%</p> <p>24-403.8 - 3.7%</p> <p>24-403.9 - 3.7%</p> <p>24-404.0 - 3.7%</p> <p>24-404.1 - 3.7%</p> <p>24-404.2 - 3.7%</p> <p>24-404.3 - 3.7%</p> <p>24-404.4 - 3.7%</p> <p>24-404.5 - 3.7%</p> <p>24-404.6 - 3.7%</p> <p>24-404.7 - 3.7%</p> <p>24-404.8 - 3.7%</p> <p>24-404.9 - 3.7%</p> <p>24-405.0 - 3.7%</p>
--	--	---	---

**F.M.G., Inc.**  
 3700 Blurga Road  
 Dallas, TX 75245-8517  
 (800) 842-1100 FAX (800) 842-4222  
 www.fmginc.com

**NOT FOR CONSTRUCTION**

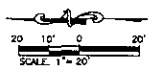
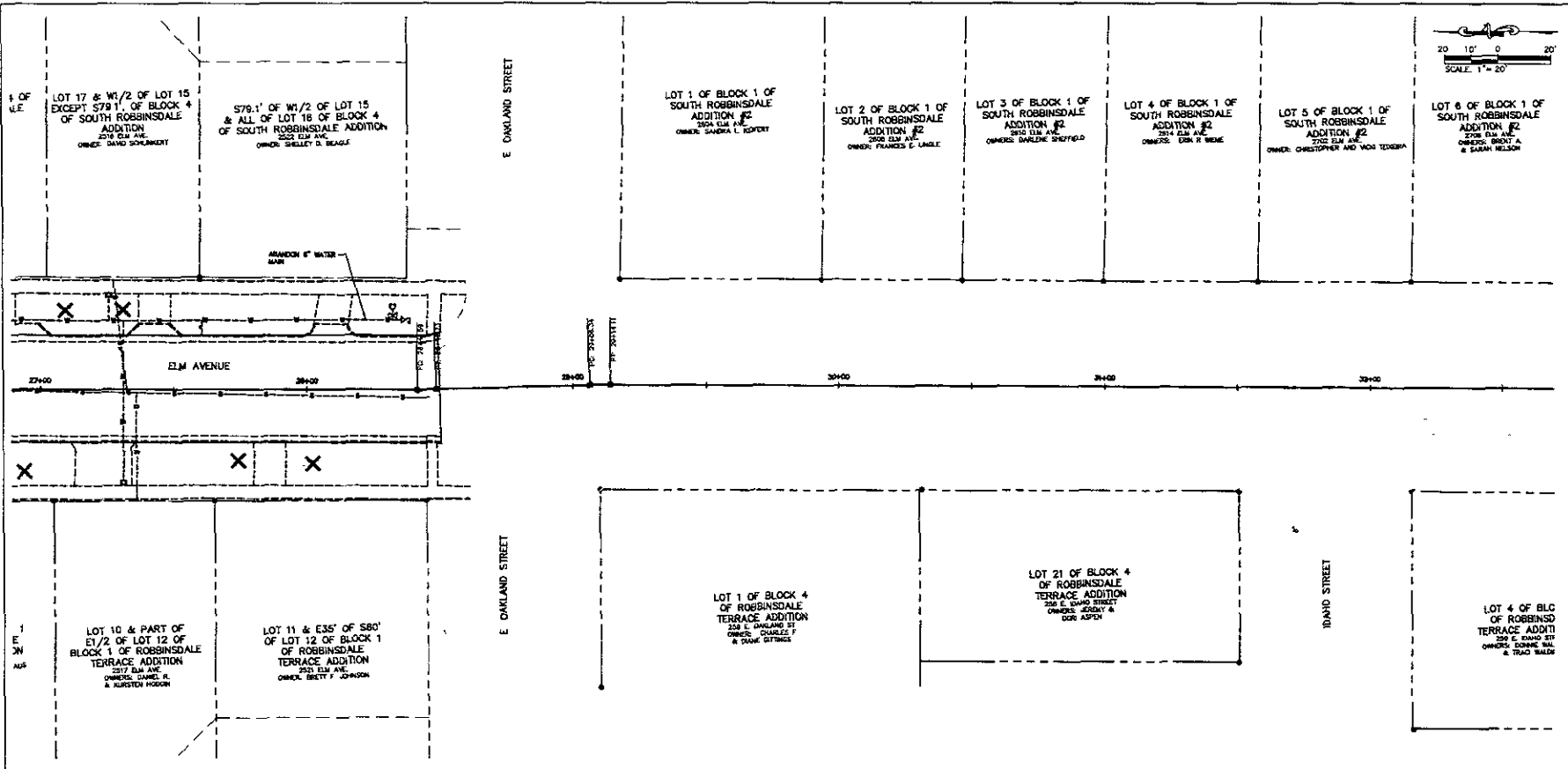
Scale: 1"=25'

Designed By: JGRAS  
 Checked By: JGRAS  
 Date: MAY 2009  
 Revised By: JGRAS  
 Date: MAY 2009

Contract No: 15-20

Project Name: ELM AVENUE RECONSTRUCTION - PHASE 3  
 E TALLENT STREET TO E. OAKLAND STREET

Sheet No: 17 of 63



Prepared by  
**F.M.G., Inc.**  
3700 Bluff Road  
Rapid City, SD 57702-0017  
(605) 342-4100 FAX (605) 342-4523  
www.fmgengineering.com

Reviewed by

**NOT FOR CONSTRUCTION**

Scale: 1"=20'  
Designed by: Daren Fry  
RAS  
Comp. Date: MAY 2009  
Print Date: MAY 2009  
Revised and Resub: 05/26/09  
Submitted by: SMC  
Survey Date: 10/05  
Remarks:

ELM AVENUE RECONSTRUCTION - PHASE 3  
E TALLENT STREET TO E. OAKLAND STREET

**WATER MAIN REMOVAL**  
REMOVE FIRE HYDRANT AND MAIN VALVE  
28+32.4 - 28+32.1  
REMOVE VALVE AND BOX  
28+27.2 - 28+27.1

**PAVEMENT REMOVAL**  
REMOVE CONCRETE APPROACH DRIVEWAY  
28+08.2 - L (21' 0" W)  
REMOVE CONCRETE SIDEWALK  
27+88.0 - R (21' 0" W)  
28+08.2 - L (24' 0" W)

**SEWER REMOVAL**  
REMOVE MAN AND SAVANNAH  
27+40.1 - 27.37, SEE SCHEDULE  
28+40.2 - 28.77, SEE SCHEDULE ON POWER POLE

**CURBS AND SIDEWALK**  
REMOVE 18" AND 24" CURBS  
(INDICATED IN CLASSIFICATION AND DRAWINGS)  
27+74.0 - 27.78  
28+02.1 - 28.78

**WORK NOTES**  
28+40.2 - 30.87  
COORDINATE WITH BLACK HILLS POWER AND LIGHT TO HAVE BLACK HILLS POWER AND LIGHT REMOVE LIGHTS FROM POWER POLES

Sheet No.  
**DEMOLITION PLAN**