

**F.M.G., Inc.**  
3700 Brough Road  
Rapid City, SD 57702-0317  
(605) 342-1100 (Fax)  
www.fmginc.com

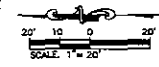
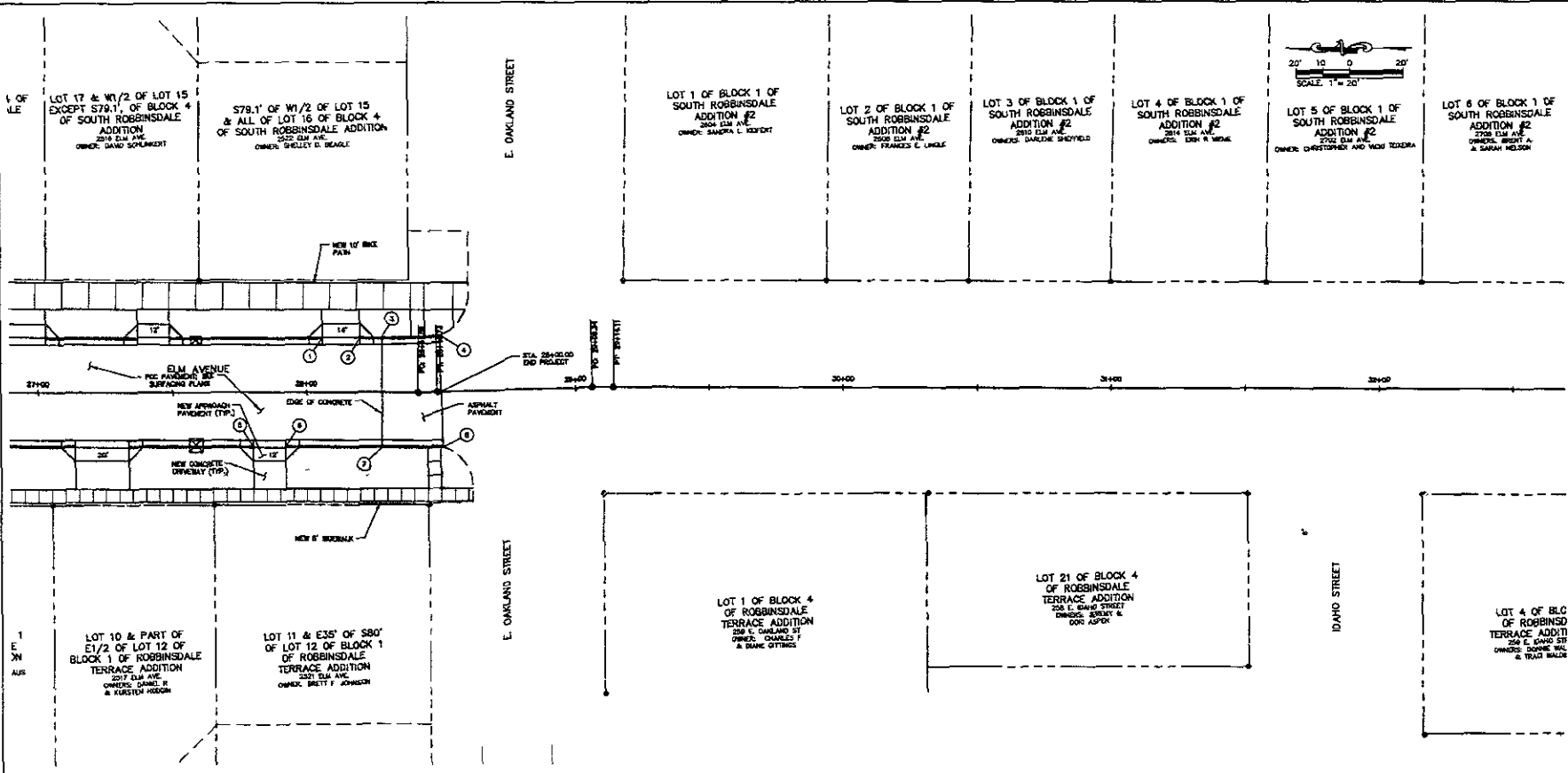
**NOT FOR CONSTRUCTION**

Scale: 1"=20'  
Designed By: RAS  
Drawn By: JARRAS  
Check Date: MAY 2009  
Project No: 06-2078-00  
Survey Date: 10-25

ELM AVENUE RECONSTRUCTION - PHASE 3  
E. TALLENT STREET TO E. OAKLAND STREET

NOTE: REFER TO CROSS SECTIONS FOR APPROXIMATE DRAINAGE SLOPES

CURB AND GUTTER ELEVATIONS	SEWER AND STORM MAINS	SEWER AND STORM MAINS	SEWER AND STORM MAINS
① 23+31.78 - 20.87 END STR. 888 C & S BELOW STR. PG. CUTTER TC (HEAD) = 3236.84	⑩ 24+02.03 - 20.87 END STR. PG. CUTTER BELOW STR. 888 C & S TC (HEAD) = 3242.80	⑲ 24+48.84 - 20.87 END STR. PG. CUTTER BELOW STR. 888 C & S TC (HEAD) = 3248.82	⑲ 24+48.84 - 20.87 END STR. PG. CUTTER BELOW STR. 888 C & S TC (HEAD) = 3248.82
② 24+51.78 - 20.87 END STR. PG. CUTTER BELOW STR. 888 C & S TC (HEAD) = 3243.87	⑪ 24+02.03 - 20.87 END STR. 888 C & S BELOW STR. PG. CUTTER TC (HEAD) = 3243.80	⑳ 24+58.54 - 20.87 END STR. PG. CUTTER BELOW STR. 888 C & S TC (HEAD) = 3249.80	⑳ 24+58.54 - 20.87 END STR. PG. CUTTER BELOW STR. 888 C & S TC (HEAD) = 3249.80
③ 24+00.00 - 20.87 END STR. 888 C & S BELOW STR. PG. CUTTER TC (HEAD) = 3240.48	⑫ 24+02.03 - 20.87 END STR. PG. CUTTER BELOW STR. 888 C & S TC (HEAD) = 3243.80	㉑ 24+64.24 - 20.87 END STR. PG. CUTTER BELOW STR. 888 C & S TC (HEAD) = 3250.80	㉑ 24+64.24 - 20.87 END STR. PG. CUTTER BELOW STR. 888 C & S TC (HEAD) = 3250.80
④ 24+12.28 - 20.87 END STR. PG. CUTTER BELOW STR. 888 C & S TC (HEAD) = 3240.80	⑬ 24+02.03 - 20.87 END STR. PG. CUTTER BELOW STR. 888 C & S TC (HEAD) = 3243.80	㉒ 24+70.04 - 20.87 END STR. PG. CUTTER BELOW STR. 888 C & S TC (HEAD) = 3251.80	㉒ 24+70.04 - 20.87 END STR. PG. CUTTER BELOW STR. 888 C & S TC (HEAD) = 3251.80
⑤ 24+02.03 - 20.87 END STR. 888 C & S BELOW STR. PG. CUTTER TC (HEAD) = 3240.80	⑭ 24+02.03 - 20.87 END STR. PG. CUTTER BELOW STR. 888 C & S TC (HEAD) = 3243.80	㉓ 24+75.84 - 20.87 END STR. PG. CUTTER BELOW STR. 888 C & S TC (HEAD) = 3252.80	㉓ 24+75.84 - 20.87 END STR. PG. CUTTER BELOW STR. 888 C & S TC (HEAD) = 3252.80
⑥ 24+02.03 - 20.87 END STR. PG. CUTTER BELOW STR. 888 C & S TC (HEAD) = 3240.80	⑮ 24+02.03 - 20.87 END STR. PG. CUTTER BELOW STR. 888 C & S TC (HEAD) = 3243.80	㉔ 24+81.64 - 20.87 END STR. PG. CUTTER BELOW STR. 888 C & S TC (HEAD) = 3253.80	㉔ 24+81.64 - 20.87 END STR. PG. CUTTER BELOW STR. 888 C & S TC (HEAD) = 3253.80
⑦ 24+02.03 - 20.87 END STR. 888 C & S BELOW STR. PG. CUTTER TC (HEAD) = 3240.80	⑯ 24+02.03 - 20.87 END STR. PG. CUTTER BELOW STR. 888 C & S TC (HEAD) = 3243.80	㉕ 24+87.44 - 20.87 END STR. PG. CUTTER BELOW STR. 888 C & S TC (HEAD) = 3254.80	㉕ 24+87.44 - 20.87 END STR. PG. CUTTER BELOW STR. 888 C & S TC (HEAD) = 3254.80
⑧ 24+02.03 - 20.87 END STR. PG. CUTTER BELOW STR. 888 C & S TC (HEAD) = 3240.80	⑰ 24+02.03 - 20.87 END STR. 888 C & S BELOW STR. PG. CUTTER TC (HEAD) = 3243.80	㉖ 24+93.24 - 20.87 END STR. PG. CUTTER BELOW STR. 888 C & S TC (HEAD) = 3255.80	㉖ 24+93.24 - 20.87 END STR. PG. CUTTER BELOW STR. 888 C & S TC (HEAD) = 3255.80
⑨ 24+02.03 - 20.87 END STR. 888 C & S BELOW STR. PG. CUTTER TC (HEAD) = 3240.80	⑱ 24+02.03 - 20.87 END STR. PG. CUTTER BELOW STR. 888 C & S TC (HEAD) = 3243.80	㉗ 24+99.04 - 20.87 END STR. PG. CUTTER BELOW STR. 888 C & S TC (HEAD) = 3256.80	㉗ 24+99.04 - 20.87 END STR. PG. CUTTER BELOW STR. 888 C & S TC (HEAD) = 3256.80
	⑳ 24+02.03 - 20.87 END STR. PG. CUTTER BELOW STR. 888 C & S TC (HEAD) = 3243.80	㉘ 24+04.04 - 20.87 END STR. PG. CUTTER BELOW STR. 888 C & S TC (HEAD) = 3244.80	㉘ 24+04.04 - 20.87 END STR. PG. CUTTER BELOW STR. 888 C & S TC (HEAD) = 3244.80
	㉑ 24+02.03 - 20.87 END STR. PG. CUTTER BELOW STR. 888 C & S TC (HEAD) = 3243.80	㉙ 24+09.84 - 20.87 END STR. PG. CUTTER BELOW STR. 888 C & S TC (HEAD) = 3245.80	㉙ 24+09.84 - 20.87 END STR. PG. CUTTER BELOW STR. 888 C & S TC (HEAD) = 3245.80
	㉒ 24+02.03 - 20.87 END STR. PG. CUTTER BELOW STR. 888 C & S TC (HEAD) = 3243.80	㉚ 24+15.64 - 20.87 END STR. PG. CUTTER BELOW STR. 888 C & S TC (HEAD) = 3246.80	㉚ 24+15.64 - 20.87 END STR. PG. CUTTER BELOW STR. 888 C & S TC (HEAD) = 3246.80
	㉓ 24+02.03 - 20.87 END STR. PG. CUTTER BELOW STR. 888 C & S TC (HEAD) = 3243.80	㉛ 24+21.44 - 20.87 END STR. PG. CUTTER BELOW STR. 888 C & S TC (HEAD) = 3247.80	㉛ 24+21.44 - 20.87 END STR. PG. CUTTER BELOW STR. 888 C & S TC (HEAD) = 3247.80
	㉔ 24+02.03 - 20.87 END STR. PG. CUTTER BELOW STR. 888 C & S TC (HEAD) = 3243.80	㉜ 24+27.24 - 20.87 END STR. PG. CUTTER BELOW STR. 888 C & S TC (HEAD) = 3248.80	㉜ 24+27.24 - 20.87 END STR. PG. CUTTER BELOW STR. 888 C & S TC (HEAD) = 3248.80
	㉕ 24+02.03 - 20.87 END STR. PG. CUTTER BELOW STR. 888 C & S TC (HEAD) = 3243.80	㉝ 24+33.04 - 20.87 END STR. PG. CUTTER BELOW STR. 888 C & S TC (HEAD) = 3249.80	㉝ 24+33.04 - 20.87 END STR. PG. CUTTER BELOW STR. 888 C & S TC (HEAD) = 3249.80
	㉖ 24+02.03 - 20.87 END STR. PG. CUTTER BELOW STR. 888 C & S TC (HEAD) = 3243.80	㉞ 24+38.84 - 20.87 END STR. PG. CUTTER BELOW STR. 888 C & S TC (HEAD) = 3250.80	㉞ 24+38.84 - 20.87 END STR. PG. CUTTER BELOW STR. 888 C & S TC (HEAD) = 3250.80
	㉗ 24+02.03 - 20.87 END STR. PG. CUTTER BELOW STR. 888 C & S TC (HEAD) = 3243.80	㉟ 24+44.64 - 20.87 END STR. PG. CUTTER BELOW STR. 888 C & S TC (HEAD) = 3251.80	㉟ 24+44.64 - 20.87 END STR. PG. CUTTER BELOW STR. 888 C & S TC (HEAD) = 3251.80
	㉘ 24+02.03 - 20.87 END STR. PG. CUTTER BELOW STR. 888 C & S TC (HEAD) = 3243.80	㊱ 24+50.44 - 20.87 END STR. PG. CUTTER BELOW STR. 888 C & S TC (HEAD) = 3252.80	㊱ 24+50.44 - 20.87 END STR. PG. CUTTER BELOW STR. 888 C & S TC (HEAD) = 3252.80
	㉙ 24+02.03 - 20.87 END STR. PG. CUTTER BELOW STR. 888 C & S TC (HEAD) = 3243.80	㊲ 24+56.24 - 20.87 END STR. PG. CUTTER BELOW STR. 888 C & S TC (HEAD) = 3253.80	㊲ 24+56.24 - 20.87 END STR. PG. CUTTER BELOW STR. 888 C & S TC (HEAD) = 3253.80
	㉚ 24+02.03 - 20.87 END STR. PG. CUTTER BELOW STR. 888 C & S TC (HEAD) = 3243.80	㊳ 24+62.04 - 20.87 END STR. PG. CUTTER BELOW STR. 888 C & S TC (HEAD) = 3254.80	㊳ 24+62.04 - 20.87 END STR. PG. CUTTER BELOW STR. 888 C & S TC (HEAD) = 3254.80
	㉛ 24+02.03 - 20.87 END STR. PG. CUTTER BELOW STR. 888 C & S TC (HEAD) = 3243.80	㊴ 24+67.84 - 20.87 END STR. PG. CUTTER BELOW STR. 888 C & S TC (HEAD) = 3255.80	㊴ 24+67.84 - 20.87 END STR. PG. CUTTER BELOW STR. 888 C & S TC (HEAD) = 3255.80
	㉜ 24+02.03 - 20.87 END STR. PG. CUTTER BELOW STR. 888 C & S TC (HEAD) = 3243.80	㊵ 24+73.64 - 20.87 END STR. PG. CUTTER BELOW STR. 888 C & S TC (HEAD) = 3256.80	㊵ 24+73.64 - 20.87 END STR. PG. CUTTER BELOW STR. 888 C & S TC (HEAD) = 3256.80
	㉝ 24+02.03 - 20.87 END STR. PG. CUTTER BELOW STR. 888 C & S TC (HEAD) = 3243.80	㊶ 24+79.44 - 20.87 END STR. PG. CUTTER BELOW STR. 888 C & S TC (HEAD) = 3257.80	㊶ 24+79.44 - 20.87 END STR. PG. CUTTER BELOW STR. 888 C & S TC (HEAD) = 3257.80
	㉞ 24+02.03 - 20.87 END STR. PG. CUTTER BELOW STR. 888 C & S TC (HEAD) = 3243.80	㊷ 24+85.24 - 20.87 END STR. PG. CUTTER BELOW STR. 888 C & S TC (HEAD) = 3258.80	㊷ 24+85.24 - 20.87 END STR. PG. CUTTER BELOW STR. 888 C & S TC (HEAD) = 3258.80
	㉟ 24+02.03 - 20.87 END STR. PG. CUTTER BELOW STR. 888 C & S TC (HEAD) = 3243.80	㊸ 24+91.04 - 20.87 END STR. PG. CUTTER BELOW STR. 888 C & S TC (HEAD) = 3259.80	㊸ 24+91.04 - 20.87 END STR. PG. CUTTER BELOW STR. 888 C & S TC (HEAD) = 3259.80
	㊱ 24+02.03 - 20.87 END STR. PG. CUTTER BELOW STR. 888 C & S TC (HEAD) = 3243.80	㊹ 24+96.84 - 20.87 END STR. PG. CUTTER BELOW STR. 888 C & S TC (HEAD) = 3260.80	㊹ 24+96.84 - 20.87 END STR. PG. CUTTER BELOW STR. 888 C & S TC (HEAD) = 3260.80
	㊲ 24+02.03 - 20.87 END STR. PG. CUTTER BELOW STR. 888 C & S TC (HEAD) = 3243.80	㊺ 24+02.03 - 20.87 END STR. PG. CUTTER BELOW STR. 888 C & S TC (HEAD) = 3243.80	㊺ 24+02.03 - 20.87 END STR. PG. CUTTER BELOW STR. 888 C & S TC (HEAD) = 3243.80
	㊳ 24+02.03 - 20.87 END STR. PG. CUTTER BELOW STR. 888 C & S TC (HEAD) = 3243.80	㊻ 24+02.03 - 20.87 END STR. PG. CUTTER BELOW STR. 888 C & S TC (HEAD) = 3243.80	㊻ 24+02.03 - 20.87 END STR. PG. CUTTER BELOW STR. 888 C & S TC (HEAD) = 3243.80
	㊴ 24+02.03 - 20.87 END STR. PG. CUTTER BELOW STR. 888 C & S TC (HEAD) = 3243.80	㊼ 24+02.03 - 20.87 END STR. PG. CUTTER BELOW STR. 888 C & S TC (HEAD) = 3243.80	㊼ 24+02.03 - 20.87 END STR. PG. CUTTER BELOW STR. 888 C & S TC (HEAD) = 3243.80
	㊵ 24+02.03 - 20.87 END STR. PG. CUTTER BELOW STR. 888 C & S TC (HEAD) = 3243.80	㊽ 24+02.03 - 20.87 END STR. PG. CUTTER BELOW STR. 888 C & S TC (HEAD) = 3243.80	㊽ 24+02.03 - 20.87 END STR. PG. CUTTER BELOW STR. 888 C & S TC (HEAD) = 3243.80
	㊶ 24+02.03 - 20.87 END STR. PG. CUTTER BELOW STR. 888 C & S TC (HEAD) = 3243.80	㊾ 24+02.03 - 20.87 END STR. PG. CUTTER BELOW STR. 888 C & S TC (HEAD) = 3243.80	㊾ 24+02.03 - 20.87 END STR. PG. CUTTER BELOW STR. 888 C & S TC (HEAD) = 3243.80
	㊷ 24+02.03 - 20.87 END STR. PG. CUTTER BELOW STR. 888 C & S TC (HEAD) = 3243.80	㊿ 24+02.03 - 20.87 END STR. PG. CUTTER BELOW STR. 888 C & S TC (HEAD) = 3243.80	㊿ 24+02.03 - 20.87 END STR. PG. CUTTER BELOW STR. 888 C & S TC (HEAD) = 3243.80



**F.M.G., Inc.**  
 37000 Bringle Road  
 Houston, Texas 77057  
 Phone: 281-441-1000 FAX: 281-442-4822  
 www.fmgengineering.com



**NOT FOR CONSTRUCTION**

Scale:	1"=20'
Designed By:	RAS
Drawn By:	JORAB
Issue Date:	MAY 2009
Print Date:	MAY 2009
Project No.:	08-002-08
Revision:	
Checked By:	Survey Date
F.M.G.:	12-25

**ELM AVENUE RECONSTRUCTION - PHASE 3**  
**E TALLENT STREET TO E OAKLAND STREET**

- CURB AND GUTTER CALLOUTS**
- 1) 28+45.97 - 28+47.00  
 2" HD STR. 8" C & G  
 8" HD STR. 18" GUTTER  
 TO (THEA) = 3254.73
  - 2) 28+18.87 - 28+19.00  
 2" HD STR. 18" GUTTER  
 8" HD STR. 8" C & G  
 TO (THEA) = 3254.01
  - 3) 28+27.87 - 28+28.00  
 2" HD STR. 8" C & G  
 8" HD STR. 18" GUTTER  
 TO (THEA) = 3253.17
  - 4) 28+30.00 - 28+30.00  
 2" HD STR. 8" C & G  
 TO = MATCH EXISTING  
 (2831.40)
  - 5) 27+88.13 - 28+67.78  
 2" HD STR. 8" C & G  
 8" HD STR. 18" GUTTER  
 TO (THEA) = 3253.45
  - 6) 27+92.04 - 28+67.78  
 2" HD STR. 18" GUTTER  
 8" HD STR. 8" C & G  
 TO (THEA) = 3253.68
  - 7) 28+17.87 - 28+17.87  
 2" HD STR. 8" C & G  
 8" HD STR. 18" GUTTER  
 TO (THEA) = 3251.43
  - 8) 28+00.00 - 28+07.78  
 2" HD STR. 8" C & G  
 TO = MATCH EXISTING  
 (3253.66)

**DRIVEWAY AND APPROACH NOTES**

APPROACH PAVEMENT NOTES  
 27+18.00 - R (8.1 3')  
 28+13.87 - L (10.8 3')

DRIVEWAY NOTES  
 27+00.00 - R (14.0 3')  
 28+13.87 - L (8.1 3')

NOTE: REFER TO CROSS SECTIONS FOR APPROPRIATE DRIVEWAY SIZES