

LOT A OF NW1/4 NE1/4 LESS LOTS H1 & H2

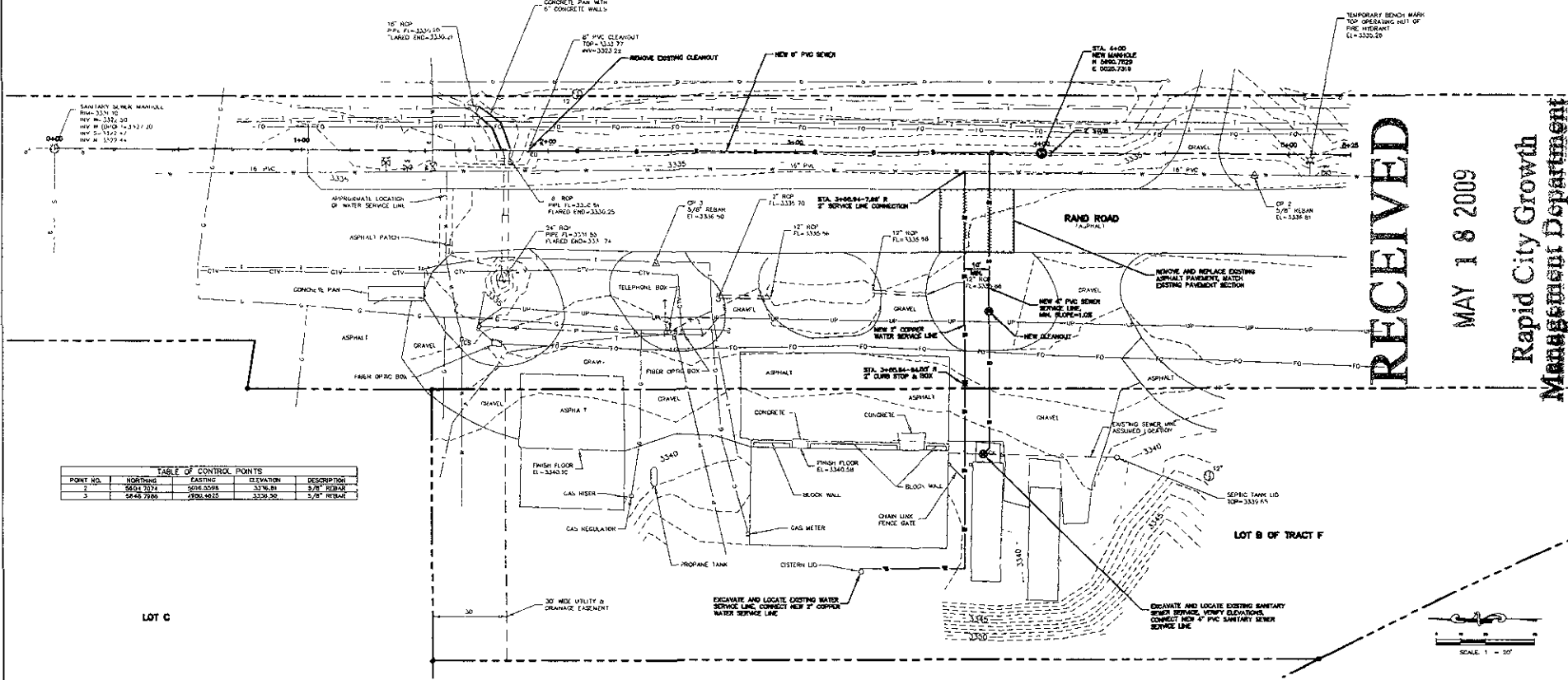


TABLE OF CONTROL POINTS

POINT NO.	NORTHING	EASTING	ELEVATION	DESCRIPTION
1	5604.5074	5026.5098	3336.81	5/8" REBAR
2	5648.7866	4981.4625	3336.90	5/8" REBAR

RECEIVED

MAY 18 2009

Rapid City Growth Management Department

FMG, Inc.
 3700 Burgess Road
 Rapid City, SD 57702-0817
 (605) 948-4108 FAX (605) 948-4022

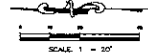
File Number: 080211
 Location: NW 1/4 NE 1/4 SECTION 24 T2N, R7E, B1W
 Surveyed by: WJG/DFW
 Date: 10/23-10/26, 2008
 Designed by: KJC
 Drawn by: ALZ
 Checked by: ALZ

SANITARY SEWER EXTENSION-RAND ROAD WATER AND SEWER SERVICE TO LOT B OF TRACT F OF DEADWOOD AVENUE TRACT RAPID CITY, SD

Revision / Date
 Sheet Name:
PLAN AND PROFILE
 Sheet Number:
1 of 2

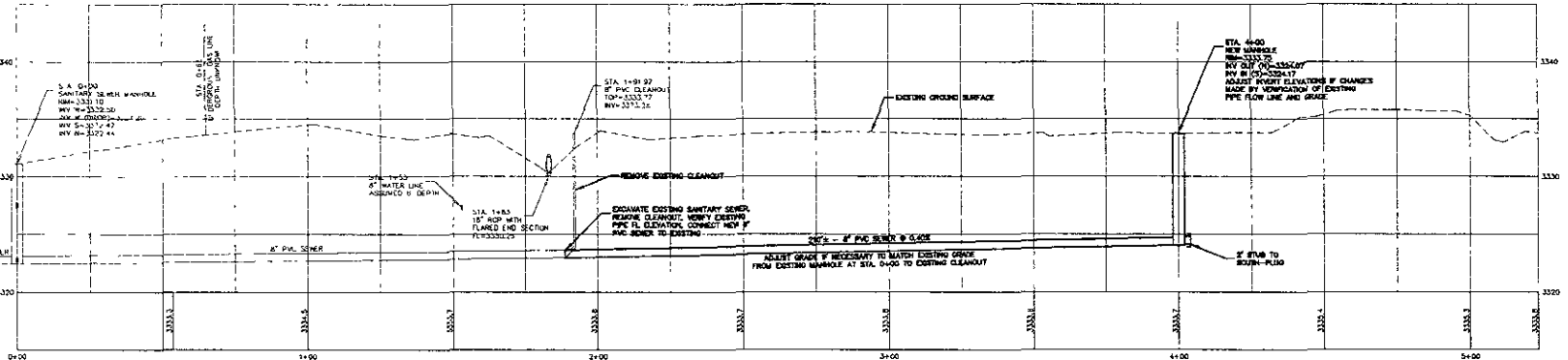
LOT C

LOT B OF TRACT F



LEGEND

- △ OP 1 SURVEY CONTROL POINT
- FOUND SURVEY MONUMENT
- +3338.13 SPOT ELEVATION
- ○ ○ ○ CLEAN OUT
- ○ ○ ○ CURB STOP
- ○ ○ ○ WATER VALVE
- ○ ○ ○ FIRE HYDRANT
- ○ ○ ○ POWER POLE
- ○ ○ ○ TRIPLE (W/UNDERG)
- ○ ○ ○ SANITARY SEWER LINE
- ○ ○ ○ WATER LINE
- ○ ○ ○ OVERHEAD POWER LINE
- ○ ○ ○ UNDERGROUND POWER LINE
- ○ ○ ○ GAS LINE
- ○ ○ ○ SANITARY SEWER LINE
- ○ ○ ○ TELEPHONE LINE
- ○ ○ ○ FIBER OPTIC LINE
- ○ ○ ○ CABLE TV LINE
- ○ ○ ○ CONTOUR ()
- CONTOUR (S)



NOTE: REGARDING UTILITIES UNLESS OTHERWISE NOTED, UTILITY LOCATIONS SHOWN ARE BASED ON FIELD MARKED LOCATIONS PROVIDED BY SOUTH DAKOTA ONE CALL, AND WHERE POSSIBLE, FIELD MEASUREMENTS, EXISTENCE AND LOCATION OF ACTUAL UTILITIES MAY VARY FROM THAT SHOWN. CONTRACTOR MUST VERIFY LOCATION OF ALL UTILITIES BEFORE EXCAVATION.