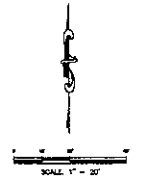
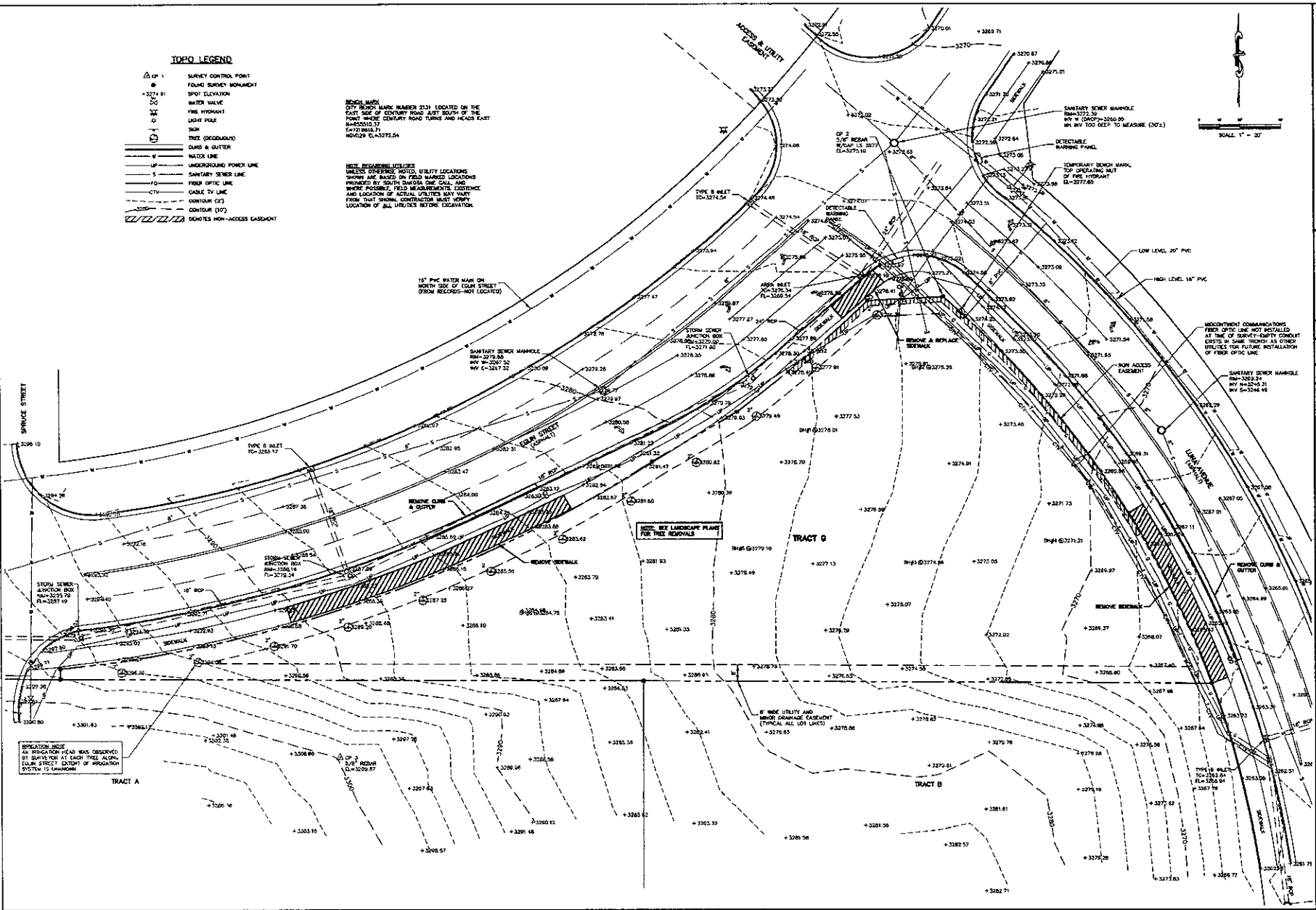


TOPO LEGEND

- △ CP 1 SURVEY CONTROL POINT
- FOUND SURVEY MONUMENT
- +3274.81 SPOT ELEVATION
- WATER VALVE
- FIRE HYDRANT
- LIQUID HOLE
- SIGN
- TREE (CIRCULOUS)
- CURB & GUTTER
- WALKER LINE
- UNDERGROUND POWER LINE
- SANITARY SEWER LINE
- FIBER OPTIC LINE
- CABLE TV LINE
- CITY
- CONTOUR (10')
- CONTOUR (5')
- DENOTES NON-ACCESS EASEMENT

BOUND MARK
 CITY BOUND MARK NUMBER 2133 LOCATED ON THE EAST SIDE OF CENTURY ROAD JUST SOUTH OF THE POINT WHERE CENTURY ROAD TURNS AND HEADS EAST
 PL=325512.37
 E=217888.73
 N=3272.54

NOTE REGARDING UTILITIES
 UNLESS OTHERWISE NOTED, UTILITY LOCATIONS SHOWN ARE BASED ON FIELD MARKED LOCATIONS PROVIDED BY SOUTH DAKOTA ONE CALL AND, WHERE POSSIBLE, FIELD MEASUREMENTS. EXISTENCE AND LOCATION OF ACTUAL UTILITIES MAY VARY FROM THAT SHOWN. CONTRACTOR MUST VERIFY LOCATION OF ALL UTILITIES BEFORE EXCAVATION.



FMG, Inc.
 8750 Bluffs Road
 Rapid City, SD 57709-0317
 (605) 342-4100 FAX (605) 342-4322

NOT FOR CONSTRUCTION

File Number	090218
Location	SE1/4 SECTION 30 T24N, R9E, B4E
Surveyed By	DM/AM/P
Checked By	RENEE BOSE
Designed By	LSP/JSP
Drawn By	LSP/JSP
Checked By	JSP

**CONQUEST DEVELOPMENT
 NEW BUILDING
 RAPID CITY, SD**

Revision / Date	
Sheet Name	EXISTING TOPOGRAPHIC MAP AND DEMOLITION PLAN
Sheet Number	