

**LITHONIA LIGHTING**

**FEATURES & SPECIFICATIONS**  
 G2V  
 2' X 4' RECESSED CANOPY  
 SQUARE FOOT CANDLE (SFC) 100  
 100' PAR  
 120V AC

**ORDERING INFORMATION**

Model: G2V  
 Part No: 100  
 Description: 2' X 4' RECESSED CANOPY SQUARE FOOT CANDLE (SFC) 100 100' PAR 120V AC

**LITHONIA LIGHTING**

**FEATURES & SPECIFICATIONS**  
 AREA1  
 AREA2  
 METAL SLAT  
 2' X 2' X 1/2" PAR  
 100' PAR  
 120V AC

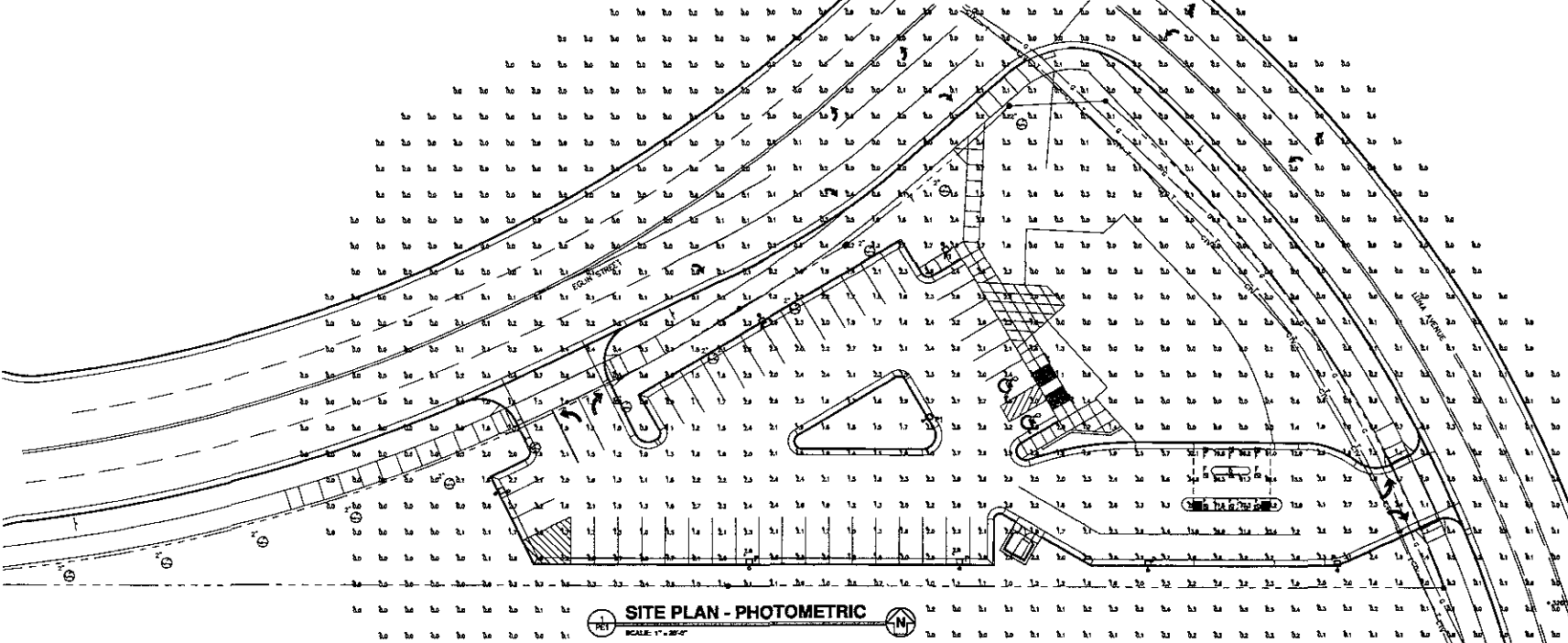
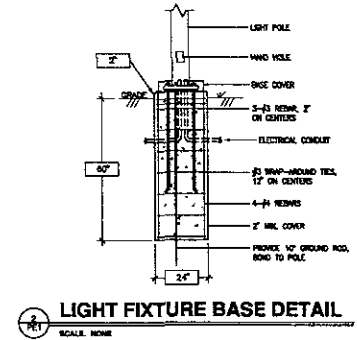
**ORDERING INFORMATION**

Model: AREA1  
 Part No: 100  
 Description: 2' X 2' X 1/2" PAR 100' PAR 120V AC

Model: AREA2  
 Part No: 100  
 Description: 2' X 2' X 1/2" PAR 100' PAR 120V AC

**LIGHTING FIXTURE SCHEDULE**

NO.	REMARKS	SYMBOL	QUANTITY	DATE	REVISIONS	REVISIONS	REVISIONS
1	2' X 4' RECESSED CANOPY SQUARE FOOT CANDLE (SFC) 100' PAR 120V AC	G2V	1				
2	2' X 2' X 1/2" PAR METAL SLAT 100' PAR 120V AC	AREA1	1				
3	2' X 2' X 1/2" PAR METAL SLAT 100' PAR 120V AC	AREA2	1				



9300 Hennepin Town Road  
 Eden Prairie, MN 55347  
 Tel: 952.278.6880 Fax: 952.278.8822

PROJECT  
**CONQUEST DEVELOPMENT**  
 NEW BUILDING  
 RAPID CITY, SOUTH DAKOTA

**ISSUED SET**

REVISIONS

DATE	NO.

**ep** engineering & planning consulting engineers

1601 New West Gate  
 Minneapolis, MN 55403  
 Tel: 952-525-0777  
 www.epinc.net

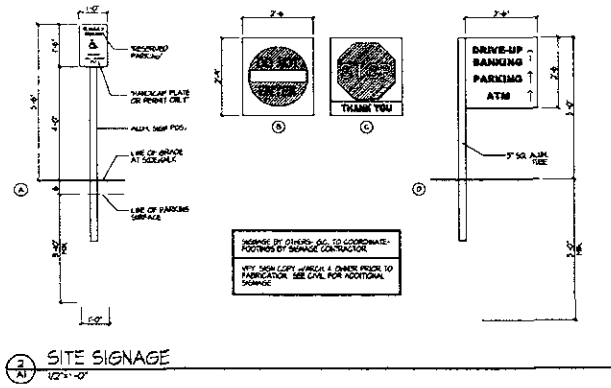
I HEREBY CERTIFY THAT THIS PLAN AND ALL INFORMATION ON WHICH IT IS BASED AND WHICH IS NOT THE PROPERTY OF THIS FIRM IS THE PROPERTY OF THE CLIENT.

Hostetler H. Pyle  
 1/2" = 1'-0"

**SITE PLAN - PHOTOMETRIC**

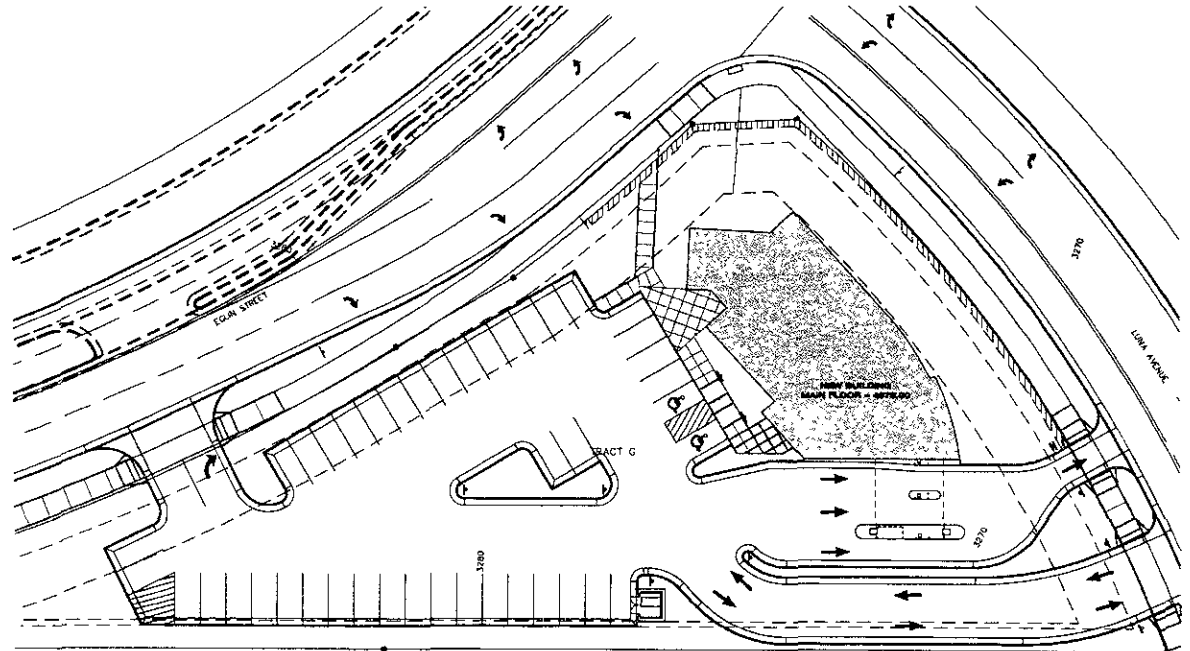
DRAWN BY: LAB CREDITED BY: MWF

**PE1**



REMOVE THE SIGNAGE, SEE CIVIL FOR ADDITIONAL SIGNAGE.  
SEE CIVIL FOR ADDITIONAL SIGNAGE.

<b>PARKING TABLE</b>	
REQUIRE SQUARE FOOTAGE	
LOWER LEVEL	4401 SF
UPPER LEVEL	1401 SF
TOTAL	5802 SF
<b>PARKING CALCULATIONS</b>	
REQUIRED	44 SPACES
LOWER LEVEL (MECHANICAL STORAGE)	120 SPACES (3000 SF)
UPPER LEVEL (DRIVE-UP BANKING AND LOAN)	44 SPACES (1500 SF)
UPPER LEVEL (DRIVE-UP BANKING AND LOAN OFFICE)	14 SPACES (490 SF)
42-48-20	44 - 44 REQUIRED PARKING SPACES
ACCESSIBLE SPACES (REQUIRED IN LIGHT ABOVE)	
2 REQUIRED (ONE TO BE VAN ACCESSIBLE)	
SIGN - 42 SPACES	



1 A) SITE PLAN  
1" = 50'-0"



9300 Hennepin Town Road  
Eden Prairie, MN 55347  
Tel: 952.273.8800 Fax: 952.273.8822  
COPYRIGHT © 2008 by HTG Architects

PROJECT

CONQUEST DEVELOPMENT

NEW BUILDING

RAPID CITY, SOUTH DAKOTA

ISSUED SET	03-25-08 PLANNING SUBMITTAL
REVISIONS	
DATE	NO.

I HEREBY CERTIFY THAT THIS PLAN, SPECIFICATIONS OR DETAILS ARE PREPARED BY ME OR UNDER MY DIRECT SUPERVISION AND THAT I AM A duly LICENSED ARCHITECT UNDER THE LAWS OF THE STATE OF SOUTH DAKOTA

J. J. JENSEN  
ARCHITECT DATE

SITE PLAN

DRAWN BY: ED CHECKED BY: KLL

A1